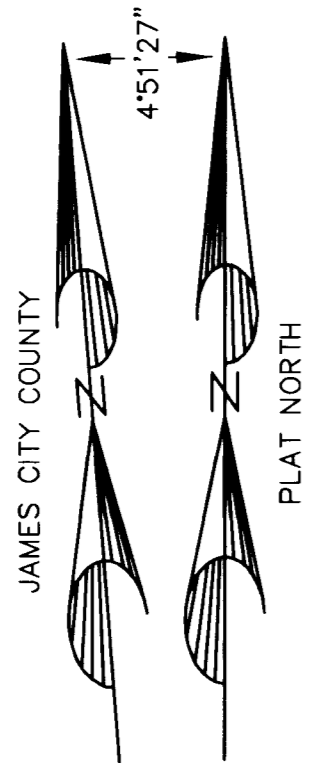
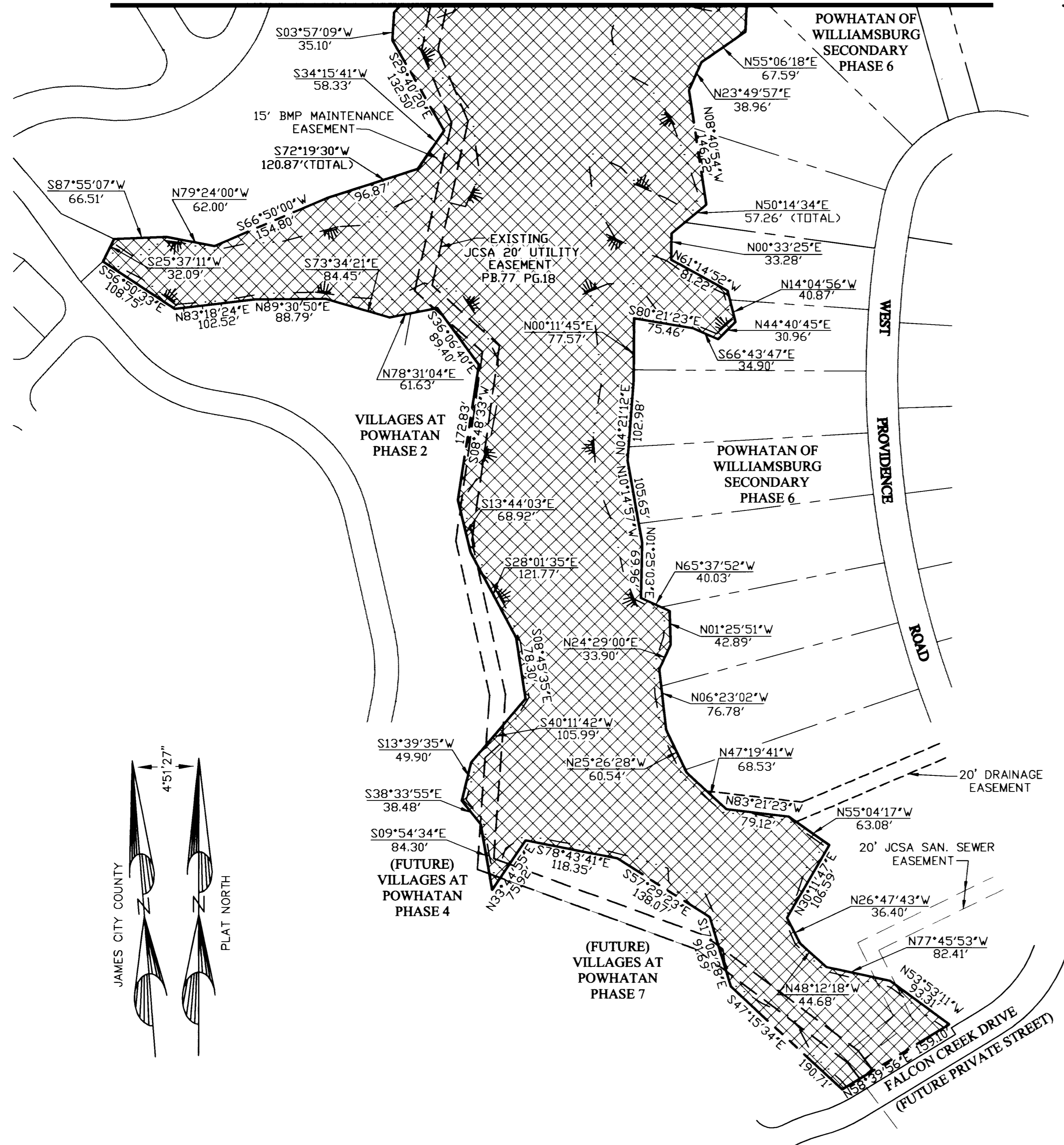


#060017423

MATCHLINE - SEE SHEET 2



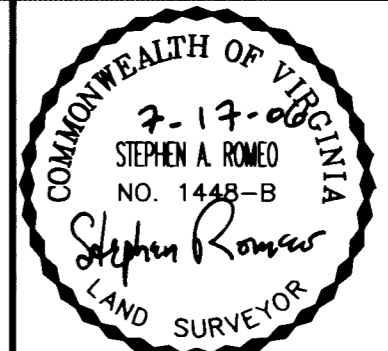
City of Williamsburg & County of James City  
 Circuit Court. This PLAT was recorded on  
19 July 2006  
 at 11:22 AM/PM, PG. 1  
 DOCUMENT # 060017423  
 BETSY B. WOOLRIDGE, CLERK  
*Betsy B. Woolridge* Clerk

GRAPHIC SCALE



( IN FEET )

3 Large/Small Plat(s) Recorded  
 herewith as # 060017423



4029 Inbound Road  
 Suite 100  
 Williamsburg, VA 23188  
 Tel: (757) 253-2975  
 Fax: (757) 228-0049  
 Email: [imd@landmarkdg.com](mailto:imd@landmarkdg.com)

5544 Greenwich Road  
 Suite 200  
 Virginia Beach, VA 23462  
 Tel: (757) 477-2000  
 Fax: (757) 497-7933  
 Email: [imd@landmarkdg.com](mailto:imd@landmarkdg.com)

**LANDMARK**  
**DESIGN GROUP**  
 Engineers • Planners • Surveyors  
 Landscape Architects • Environmental Scientists

EXHIBIT "A" SHOWING  
 PROPERTY OF  
 POWHATAN ENTERPRISES, INC.  
 NATURAL OPEN SPACE EASEMENT  
 TO BE DEDICATED TO  
 JAMES CITY COUNTY, VA  
 JAMES CITY COUNTY, VIRGINIA

Designed:	Date:
Checked: SAR	7-14-06
File Mgr./Drawn: LFV	Scale: 1"=100'
Project Number: 1780041-148.99	CADD File name: CONSERVWLC
Drawing Number	Dwg. File No.: W

3