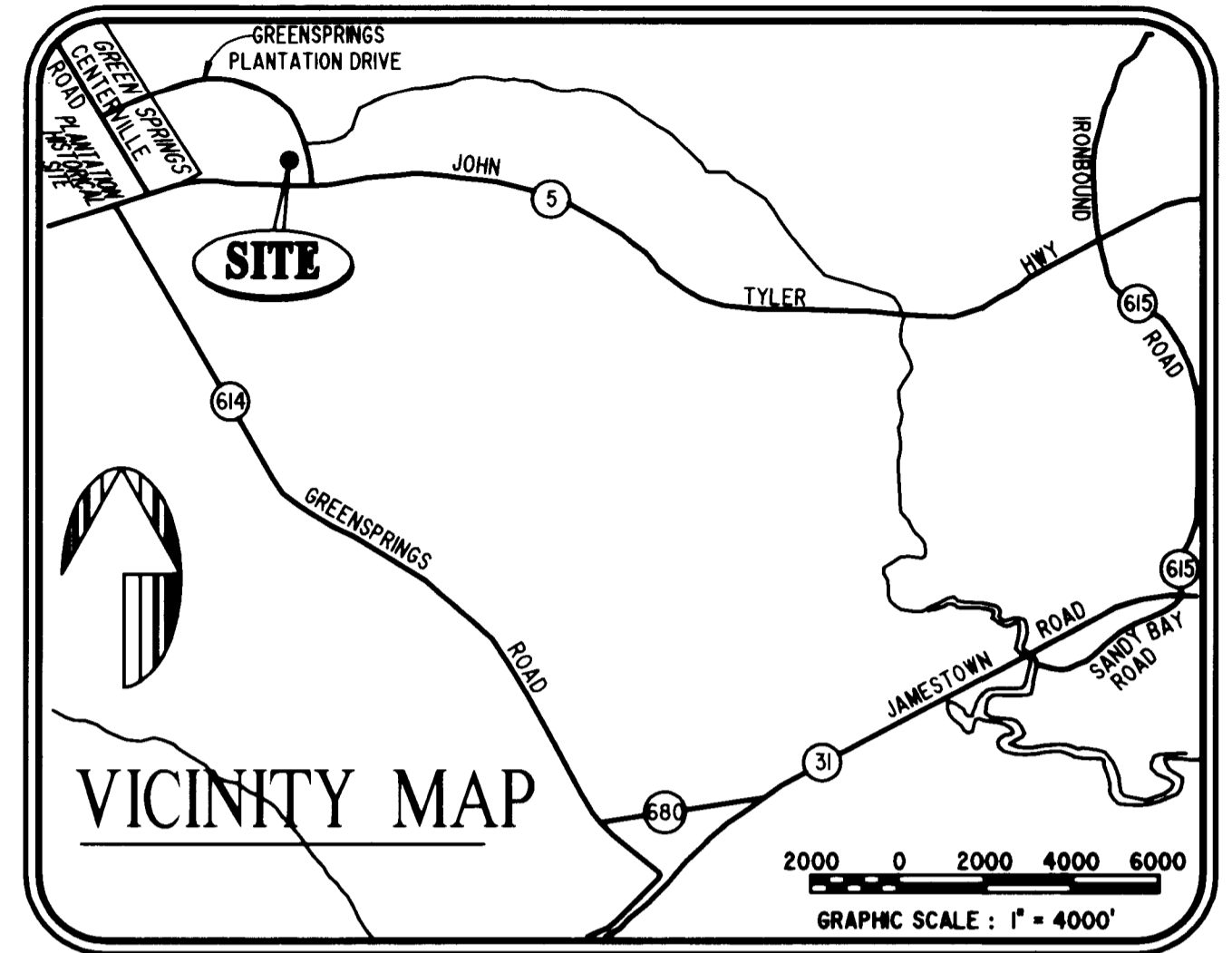


# #060017217

BUILDING NUMBER	UNIT TYPE	STREET ADDRESS
140	POOL HOUSE	SHOAL CREEK

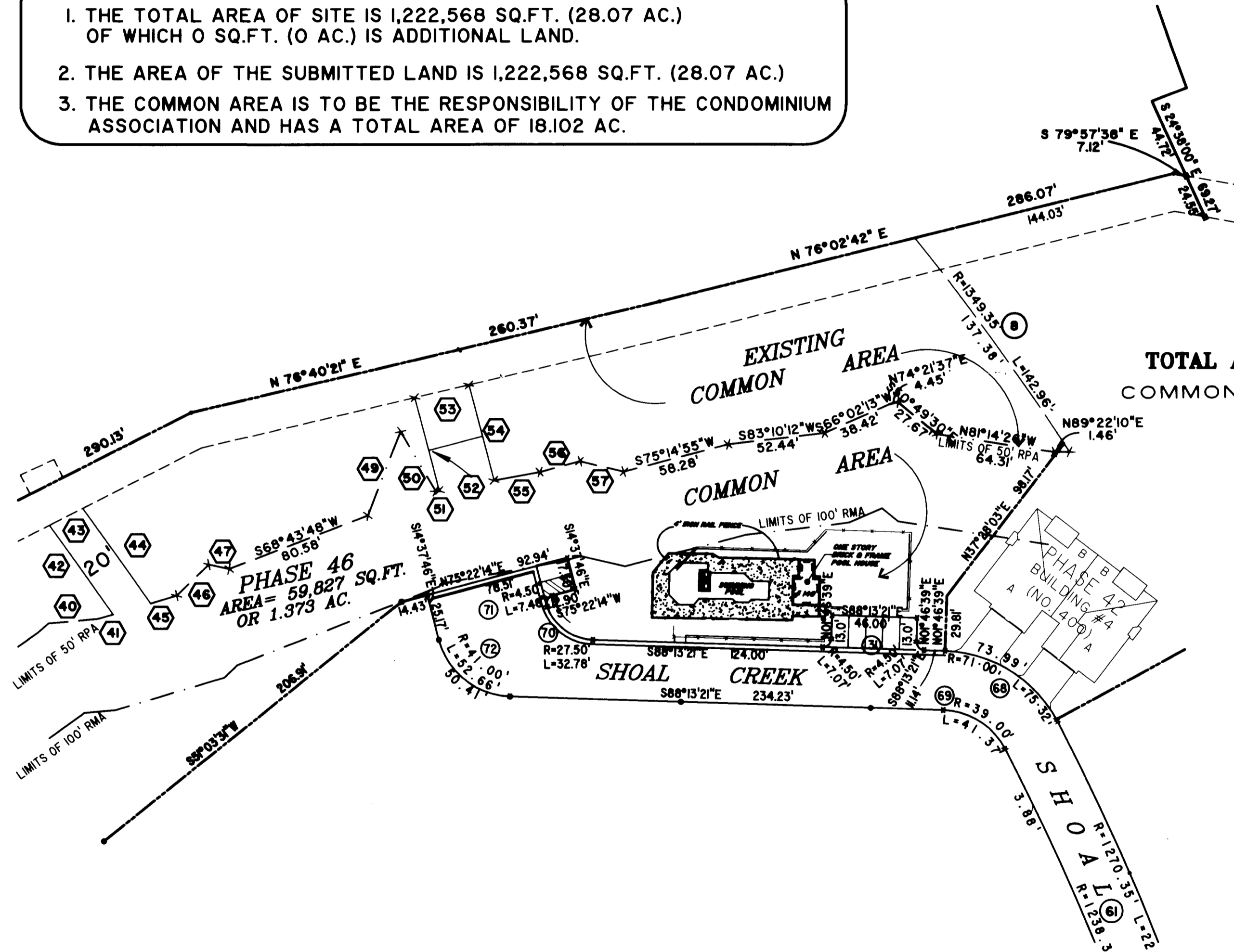
**NOTES:**

1. THE TOTAL AREA OF SITE IS 1,222,568 SQ.FT. (28.07 AC.) OF WHICH 0 SQ.FT. (0 AC.) IS ADDITIONAL LAND.
2. THE AREA OF THE SUBMITTED LAND IS 1,222,568 SQ.FT. (28.07 AC.)
3. THE COMMON AREA IS TO BE THE RESPONSIBILITY OF THE CONDOMINIUM ASSOCIATION AND HAS A TOTAL AREA OF 18.102 AC.



## PHASE 46

TOTAL AREA THIS PHASE = 72,820 SQ.FT. OR 1.672 AC.  
 COMMON AREA THIS PHASE = 72,820 SQ.FT. = 1.672 AC.



I MICHAEL W. MURPHY, A CERTIFIED LAND SURVEYOR, DO HEREBY CERTIFY THAT THIS PLAT IS ACCURATE, AND THAT IT COMPLIES WITH THE PROVISIONS OF SECTION 55 - 79.58A OF THE CODE OF VIRGINIA. I FURTHER HEREBY CERTIFY THAT ALL UNITS OR PORTIONS THEREOF DEPICTED HEREON HAVE BEEN SUBSTANTIALLY COMPLETED.

THE UNDERSIGNED CERTIFIED LAND SURVEYOR CERTIFIES THAT HE HAS READ SECTION 55 - 79.58B OF THE CODE OF VIRGINIA, AND FINDS THIS PLAT TO BE ACCURATE AND IN COMPLIANCE WITH THE CODE. I FURTHER CERTIFY THAT ALL UNITS OR PORTIONS THEREOF DEPICTED HEREON HAVE BEEN SUBSTANTIALLY COMPLETED.

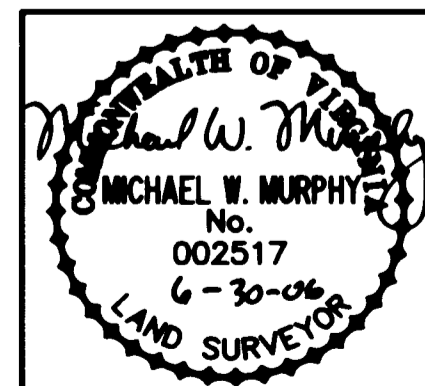
6/30/06 *Michael W. Murphy*  
 DATE MICHAEL W. MURPHY, VA. L.S. No. 002517

City of Williamsburg & County of James City  
 Circuit Court: This PLAT was recorded on  
 at 12:05 PM, July 18, 2006  
 DOCUMENT # 060017217  
 BETSY B. WOOLRIDGE, CLERK  
*Betsy B. Woolridge* Clerk

6 Large/Small Plat(s) Recorded  
 beneath as # 060017217

## PHASE 46

PARTIAL (SEE SHEET 5 FOR REST OF PHASE 46)  
 AREA = 59,827 SQ. FT. = 1.373 AC.

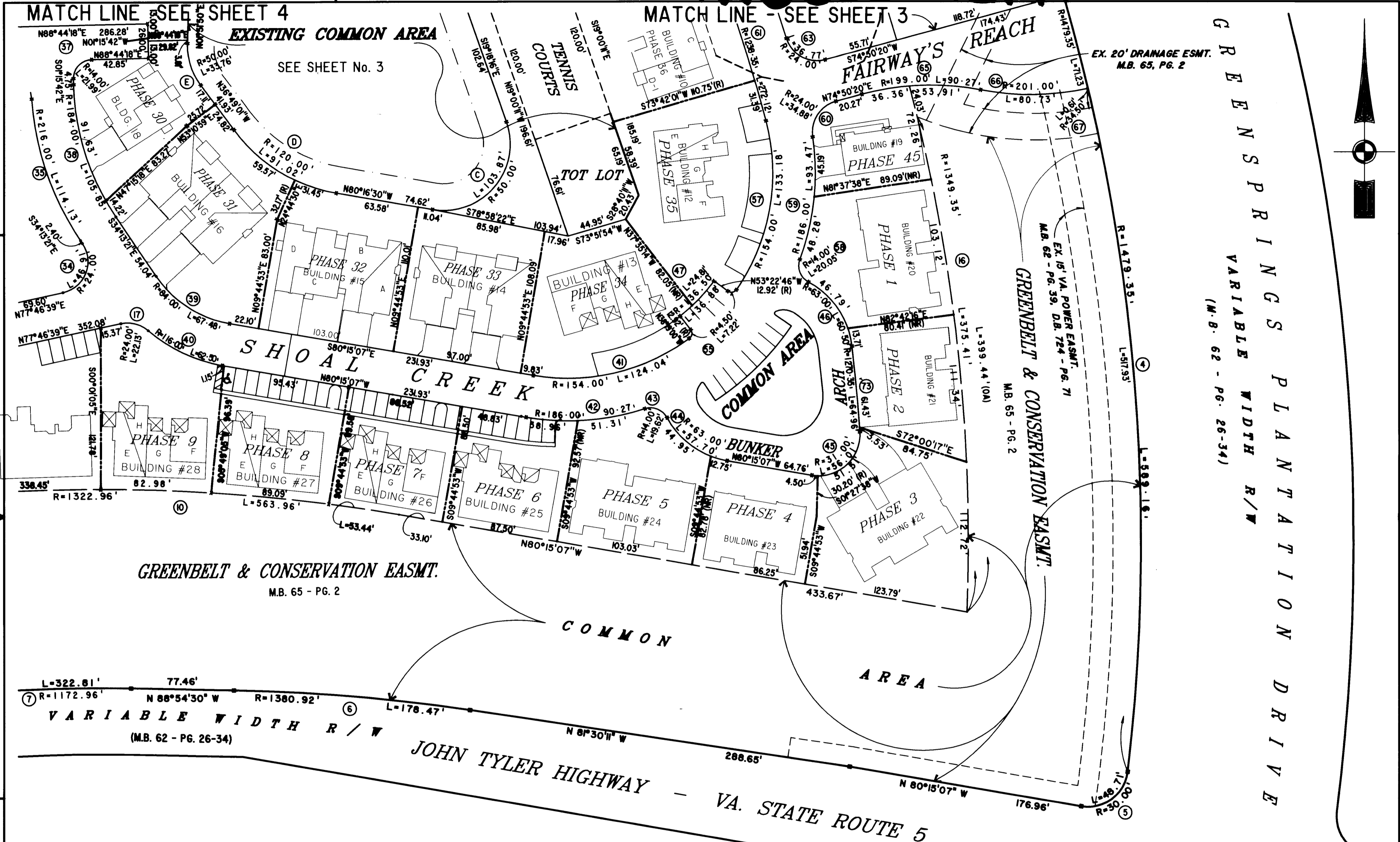


**Hassell & Folkes, P.C.**  
 Engineers Surveyors Planners  
 325 Volvo Parkway  
 Chesapeake, VA. 23320  
 (757) 547-9531

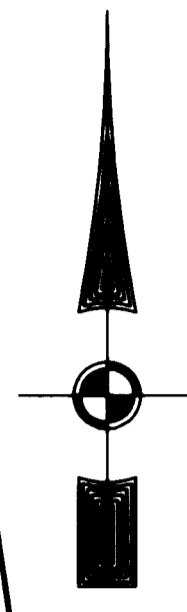
DRAWN BY:	DATE
HJS	09/24/04
COMP BY:	DATE
HF	
CHECKED BY:	DATE
MWM	09/24/04
REVISED BY:	DATE
NTP	10/29/04

<b>EXHIBIT "A" PHASE 46</b>			
<b>FAIRWAYS VILLAS</b>			
AT <b>GREENSPRINGS, A CONDOMINIUM</b>			
FOR <b>GREENSPRINGS DEVELOPMENT, L.C.</b>			
BERKELEY DISTRICT		JAMES CITY COUNTY, VIRGINIA	
SIZE	CONTRACT	FILE NAME	REV.
C	95-079	S:\PLATS\FAIRWAYS\FAIRWAY 46.DWG	
SCALE: 1" = 50'		DATE: 11/14/05	SHEET 1 of 6

#060017217



GREENSPRINGS PLANTATION DRIVE  
 VARIABLE WIDTH R/W  
 (M.B. 62 - PG. 26-34)



City of Williamsburg & County of James City  
 Circuit Court: This PLAT was recorded on  
 at 12:05 PM, July 2006 PG. 2  
 DOCUMENT # 060017217  
 BETSY B. WOOLRIDGE, CLERK  
 Betsy B. Woolridge Clerk

Large/Small Plat(s) Recorded  
 herewith as # 060017217



**EXHIBIT "A" PHASE 46  
 FAIRWAYS VILLAS**  
 AT  
**GREENSPRINGS, A CONDOMINIUM**  
 FOR  
**GREENSPRINGS DEVELOPMENT, L.C.**  
 BERKELEY DISTRICT JAMES CITY COUNTY, VIRGINIA

Hassell & Folkes, P.C. Engineers Surveyors Planners Chesapeake, VA. 23320 (757)547-9531	SIZE C	CONTRACT NO 95-079	FILE NAME S:\PLATS\FAIRWAYS\FAIRWAY46.DWG	REV.
SCALE: 1" = 50'		DATE: 11/14/05		SHEET 2 of 6

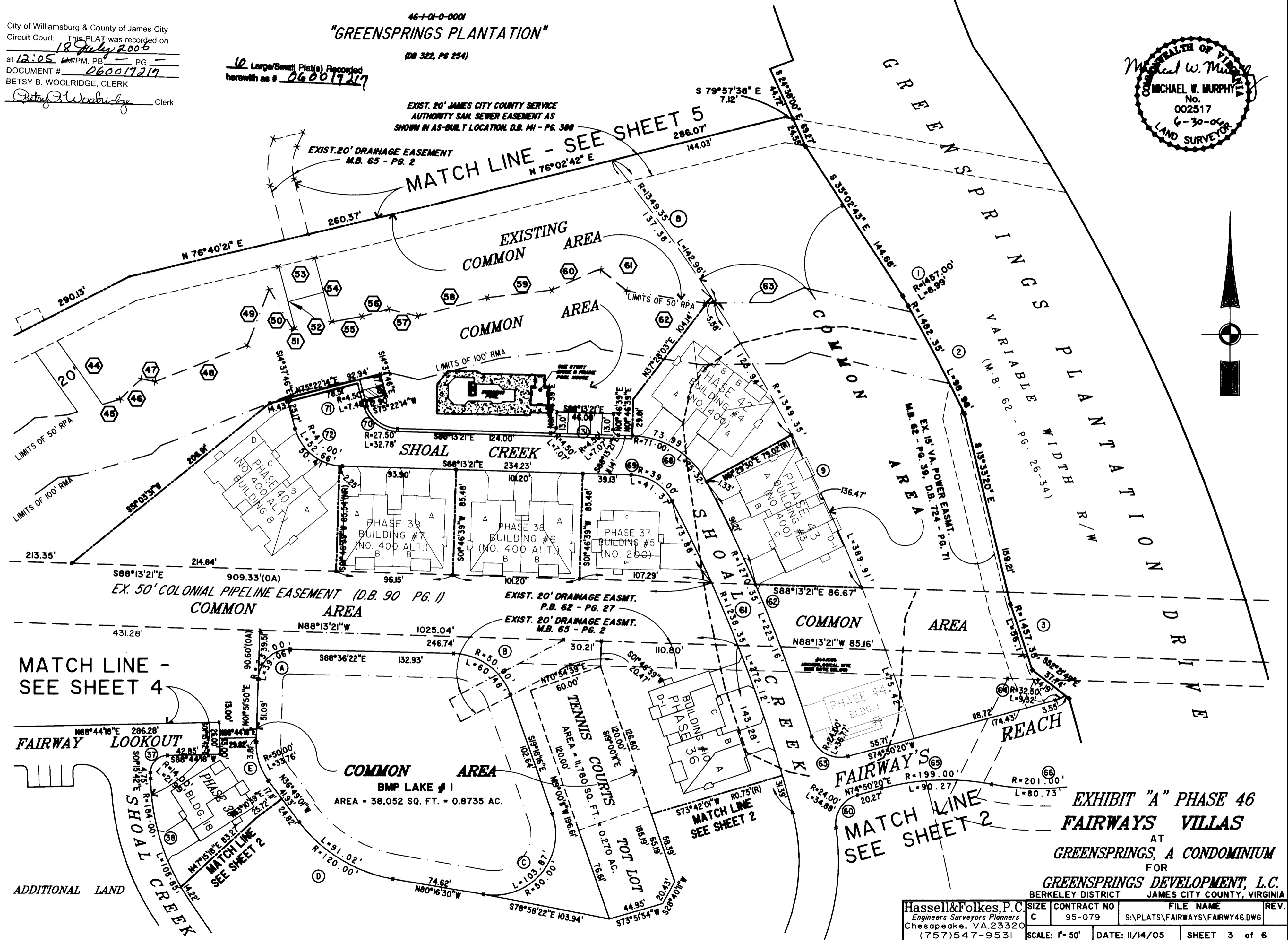
# #060017217

City of Williamsburg & County of James City  
 Circuit Court: This PLAT was recorded on  
 18 July 2006  
 at 12:05 AM/PM, PB PG  
 DOCUMENT # 060017217  
 BETSY B. WOOLRIDGE, CLERK  
 Betsy B. Woolridge Clerk

46-01-0-0001  
**"GREENSPRINGS PLANTATION"**  
 (DB 322, PG 254)

12 Large/Small Plat(s) Recorded  
 herewith as # 060017217

EXIST. 20' JAMES CITY COUNTY SERVICE  
 AUTHORITY SAN. SEWER EASEMENT AS  
 SHOWN IN AS-BUILT LOCATION, D.B. 44 - PG. 388



MATCH LINE -  
 SEE SHEET 4

MATCH LINE - SEE SHEET 5

MATCH LINE  
 SEE SHEET 2

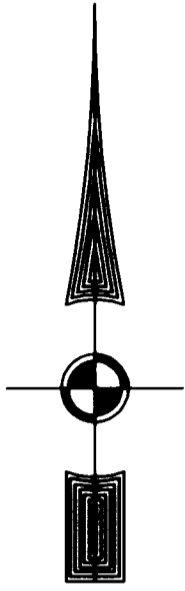
**EXHIBIT "A" PHASE 46  
 FAIRWAYS VILLAS**  
 AT  
**GREENSPRINGS, A CONDOMINIUM**  
 FOR  
**GREENSPRINGS DEVELOPMENT, L.C.**  
 BERKELEY DISTRICT JAMES CITY COUNTY, VIRGINIA

Hassell & Folkes, P.C. Engineers Surveyors Planners Chesapeake, VA 23320 (757) 547-9531	SIZE C	CONTRACT NO 95-079	FILE NAME S:\PLATS\FAIRWAYS\FAIRWAY46.DWG	REV.
SCALE: 1" = 50'	DATE: 11/14/05	SHEET 3 of 6		



# #06001727

EXIST. 20' JAMES CITY COUNTY SERVICE  
AUTHORITY SAN. SEWER EASEMENT AS  
SHOWN IN AS-BUILT LOCATION. D.B. 141 - PG. 388



MATCH LINE - SEE SHEET 5

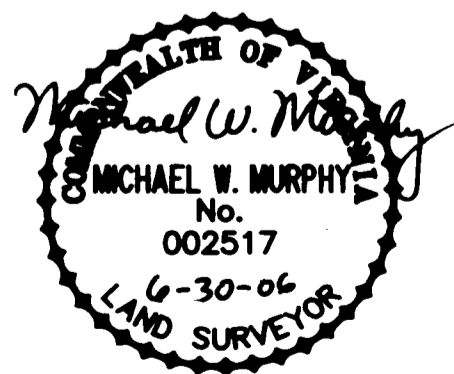
MATCH LINE - SEE SHEET 2

46-1-01-0-0001  
"GREENSPRINGS PLANTATION"  
(DB 322, PG 254)

6 Large/Small Plat(s) Recorded  
herewith as # 06001727

City of Williamsburg & County of James City  
Circuit Court. This PLAT was recorded on  
19 July 2005  
at 12:05 AM/PM, PG. 1  
DOCUMENT # 06001727  
BETSY B. WOOLRIDGE, CLERK

*Betsy B. Woolridge* Clerk

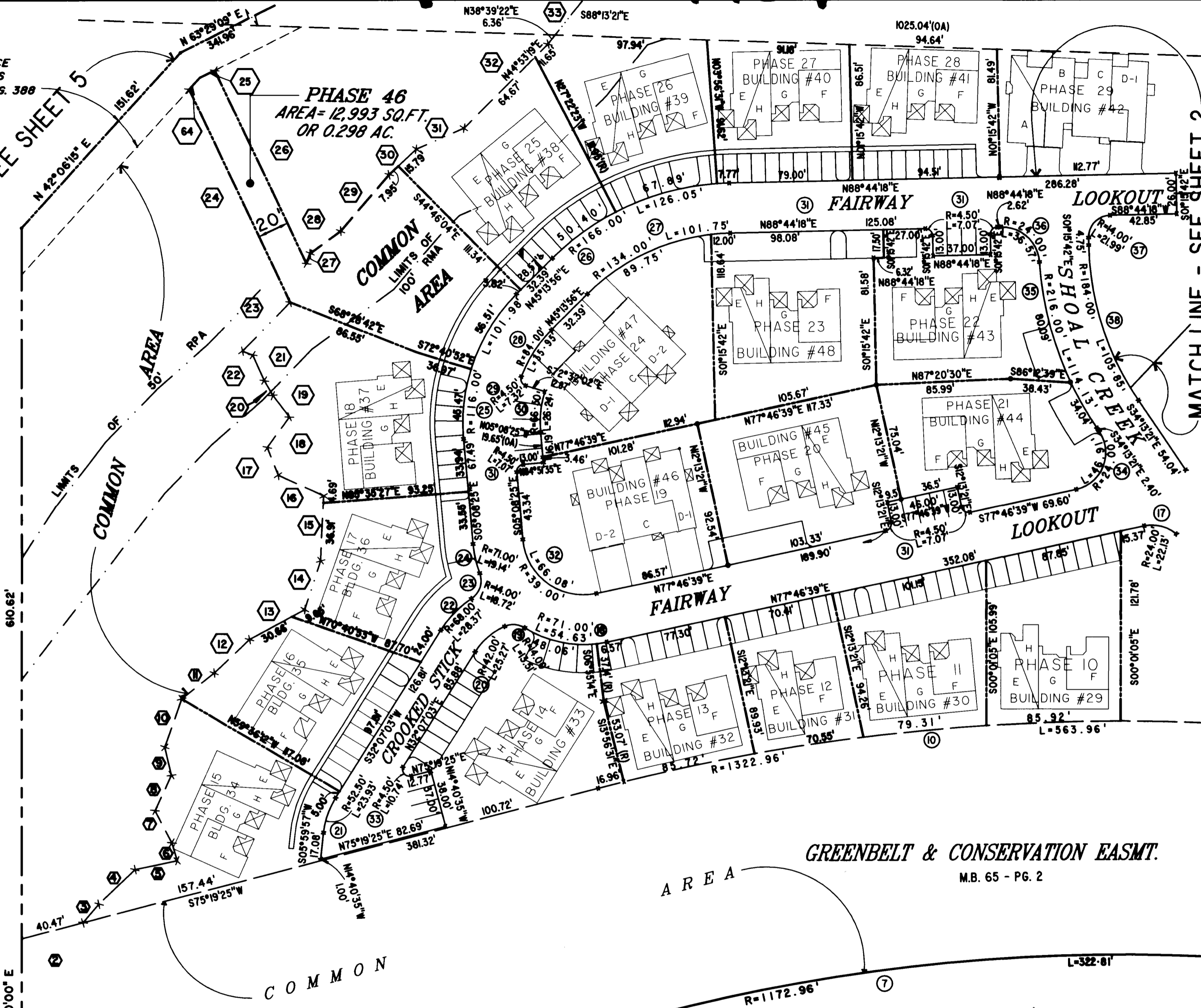


VA. STATE ROUTE 5  
JOHN TYLER HIGHWAY - VARIABLE WIDTH R/W

GREENBELT & CONSERVATION EASMT.  
M.B. 65 - PG. 2

EXHIBIT "A" PHASE 46  
FAIRWAYS VILLAS  
AT  
GREENSPRINGS, A CONDOMINIUM  
FOR  
GREENSPRINGS DEVELOPMENT, L.C.

Hassell&Folkes, P.C. Engineers Surveyors Planners Chesapeake, VA. 23320 (757)547-9531	SIZE C	CONTRACT NO 95-079	FILE NAME S:\PLATS\FAIRWAYS\FAIRWAY46.DWG	REV.
SCALE: 1"=50'	DATE: 1/14/05	SHEET 4 of 6		



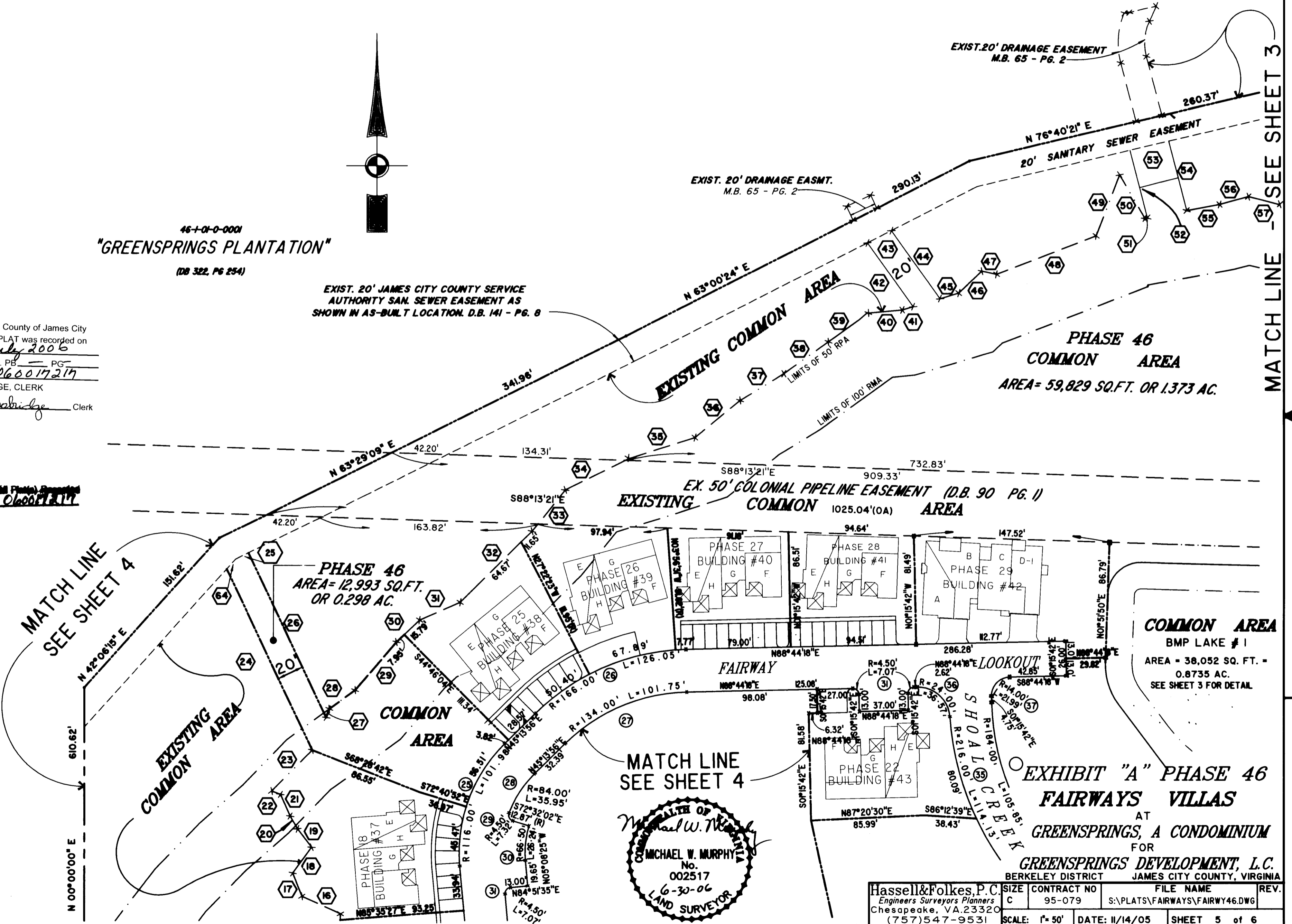
#060017217

46-01-0-0001  
"GREENSPRINGS PLANTATION"  
(DB 322, PG 254)

EXIST. 20' JAMES CITY COUNTY SERVICE  
AUTHORITY SAN. SEWER EASEMENT AS  
SHOWN IN AS-BUILT LOCATION. D.B. 141 - PG. 8

City of Williamsburg & County of James City  
Circuit Court: This PLAT was recorded on  
18 July 2006  
at 12:05 AM/PM, PG. 1  
DOCUMENT # 060017217  
BETSY B. WOOLRIDGE, CLERK  
*Betsy B. Woolridge* Clerk

6 (2006) (Plat) Recorded  
herein as # 060017217



MATCH LINE  
SEE SHEET 4

Michael W. Murphy  
No. 002517  
6-30-06  
LAND SURVEYOR

EXHIBIT "A" PHASE 46  
FAIRWAYS VILLAS  
AT  
GREENSPRINGS, A CONDOMINIUM  
FOR  
GREENSPRINGS DEVELOPMENT, L.C.  
BERKELEY DISTRICT JAMES CITY COUNTY, VIRGINIA

Hassell & Folkes, P.C. Engineers Surveyors Planners Chesapeake, VA 23320 (757) 547-9531	SIZE C	CONTRACT NO 95-079	FILE NAME S:\PLATS\FAIRWAYS\FAIRWAY46.DWG	REV.
SCALE: 1"=50'	DATE: 11/14/05	SHEET 5 of 6		

# #060017217

N°	BEARING	DISTANCE	N°	BEARING	DISTANCE	N°	BEARING	DISTANCE	N°	BEARING	DISTANCE
1	NORTH	155.06'	21	N24°19'39"W	18.00'	41	N73°24'07"E	8.57'	61	S50°49'30"E	28.39'
2	N75°19'25"E	40.47'	22	N69°19'39"W	7.07'	42	N35°32'25"W	59.16'	62	S81°14'26"E	64.31'
3	N40°42'39"E	15.76'	23	N44°31'02"E	43.59'	43	N63°00'24"E	20.22'	63	N89°22'10"E	8.13'
4	N46°05'27"E	32.02'	24	N25°21'31"W	150.65'	44	S35°32'25"E	63.02'	64	N42°06'15"E	10.10'
5	N76°05'22"E	27.59'	25	N63°29'09"E	10.67'	45	N73°24'07"E	14.72'			
6	N16°44'45"W	12.04'	26	S25°21'31"E	136.97'	46	N46°21'12"E	24.05'			
7	N27°24'57"W	23.32'	27	N9°51'26"E	6.90'	47	S77°39'56"E	11.29'			
8	N24°46'40"E	25.18'	28	N53°59'32"E	24.16'	48	N68°43'48"E	80.58'			
9	N13°22'46"W	18.38'	29	N40°41'58"E	47.56'	49	N2°06'45"E	48.92'			
10	N19°16'53"E	32.76'	30	N46°49'41"E	23.74'	50	S30°15'14"E	37.69'			
11	N5°25'01"E	26.57'	31	N66°20'36"E	33.45'	51	N79°32'01"E	1.93'			
12	N46°33'07"E	31.05'	32	N44°53'19"E	76.32'	52	N14°37'46"W	52.29'			
13	N6°21'55"E	40.31'	33	N38°39'22"E	40.18'	53	N76°40'21"E	30.01'			
14	N17°35'03"E	32.98'	34	N63°44'13"E	53.14'	54	S14°37'46"E	53.80'			
15	N02°42'14"E	41.60'	35	N72°23'40"E	52.44'	55	N79°32'01"E	25.17'			
16	N65°30'48"W	31.89'	36	N50°42'36"E	43.97'	56	N74°56'16"E	22.42'			
17	N2°18'53"W	19.03'	37	N58°37'17"E	38.60'	57	S76°45'41"E	24.45'			
18	N35°55'39"E	24.19'	38	N54°09'52"E	41.40'	58	N75°14'55"E	58.28'			
19	N37°34'05"W	17.46'	39	N54°09'52"E	37.13'	59	N83°10'12"E	52.44'			
20	N29°31'19"W	11.05'	40	N84°42'43"E	25.55'	60	N66°02'13"E	42.50'			

## CURVE DATA

N°	DELTA	RADIUS	LENGTH	TANGENT	CHORD	N°	DELTA	RADIUS	LENGTH	TANGENT	N°	DELTA	RADIUS	LENGTH	TANGENT
1	00°21'13"	1457.00'	8.99'	4.50'	S29°17'32"E 8.99'	36	87°18'45"	24.00'	36.57'	22.90'	71	95°17'54"	4.50'	7.48'	4.94'
2	03°49'33"	1482.35'	98.98'	49.51'	S27°33'21"E 98.98'	37	90°00'00"	14.00'	21.99'	14.00'	72	73°35'34"	41.00'	52.66'	30.67'
3	02°12'22"	1457.35'	56.11'	28.06'	S18°24'28"E 56.11'	38	32°57'39"	184.00'	105.85'	54.43'	73	02°55'47"	1270.35'	64.96'	32.49'
4	22°49'06"	1479.35'	589.16'	298.53'	S04°41'57"E 585.27'	39	46°01'46"	84.00'	67.48'	35.68'					
5	93°02'17"	30.00'	48.71'	31.63'	S53°13'44"W 43.54'	40	30°52'07"	116.00'	62.50'	32.03'					
6	07°24'18"	1380.92'	178.47'	89.36'	N85°12'21"W 178.35'	41	46°08'54"	154.00'	124.04'	65.60'					
7	15°46'06"	1172.96'	322.81'	162.43'	S83°12'28"W 321.79'	42	27°48'28"	186.00'	90.27'	46.04'					
8	06°04'13"	1349.35'	142.96'	71.55'		43	80°16'51"	14.00'	19.62'	11.81'					
9	16°33'24"	1349.35'	389.91'	196.32'		44	52°28'22"	63.00'	57.70'	31.05'					
10	24°25'28"	1322.96'	563.96'	286.33'		45	103°31'29"	31.00'	56.01'	39.34'					
						46	55°01'24"	63.00'	60.50'	32.81'					
						47	10°24'49"	136.50'	24.81'	12.44'					
16	16°57'40"	1349.35'	399.44'	201.19'		55	91°55'00"	4.50'	7.22'	4.65'					
17	52°50'21"	24.00'	22.13'	11.92'		56	15°28'57"	136.50'	36.88'	18.56'					
18	44°05'16"	71.00'	54.63'	28.75'		57	49°33'05"	154.00'	133.18'	71.08'					
19	55°16'25"	14.00'	13.51'	7.33'		58	82°03'57"	14.00'	20.05'	12.18'					
20	34°28'27"	42.00'	25.27'	13.03'		59	28°47'34"	186.00'	93.47'	47.74'					
21	26°07'06"	52.50'	23.93'	12.18'		60	83°16'14"	24.00'	34.88'	21.33'					
22	23°54'28"	68.00'	28.37'	14.40'		61	12°35'25"	1238.35'	272.12'	136.61'					
23	76°36'32"	14.00'	18.72'	11.06'		62	10°03'54"	1270.35'	223.16'	111.87'					
24	15°26'37"	71.00'	19.14'	9.63'		63	87°47'18"	24.00'	36.77'	23.09'					
25	50°22'21"	116.00'	101.98'	54.55'		64	16°25'32"	32.50'	9.32'	4.69'					
26	43°30'21"	166.00'	126.05'	66.24'		65	25°59'26"	199.00'	90.27'	45.93'					
27	43°30'21"	134.00'	101.75'	53.47'		66	23°00'40"	201.00'	80.73'	40.91'					
28	24°31'17"	84.00'	35.95'	18.25'		67	01°01'24"	34.50'	0.61'	0.31'					
29	93°14'42"	4.50'	7.32'	4.76'		68	60°47'05"	71.00'	75.32'	41.64'					
30	22°36'22"	66.50'	26.24'	13.29'		69	60°47'05"	39.00'	41.37'	22.87'					
31	90°00'00"	4.50'	7.07'	4.50'		70	68°17'41"	27.50'	32.78'	18.65'					
32	97°04'56"	39.00'	66.08'	44.15'											
33	136°47'38"	4.50'	10.74'	11.05'											
34	112°00'00"	24.00'	46.91'	35.58'											
35	30°16'23"	216.00'	114.13'	58.43'											

### LAKE CURVE DATA

N°	DELTA	RADIUS	LENGTH	TANGENT
A	89°31'48"	25.00'	39.06'	24.80'
B	69°18'06"	50.00'	60.48'	34.56'
C	119°01'46"	50.00'	103.87'	84.93'
D	43°27'29"	120.00'	91.02'	47.82'
E	38°40'50"	50.00'	33.76'	17.55'

City of Williamsburg & County of James City  
 Circuit Court: This PLAT was recorded on  
 at 12:05 PM, 18 July 2006, PG. —  
 DOCUMENT # 060017217  
 BETSY B. WOOLRIDGE, CLERK  
*Betsy B. Woolridge* Clerk



6 Large/Small Plat(s) Recorded  
 herewith as # 060017217

**EXHIBIT "A" PHASE 46**  
**FAIRWAYS VILLAS**  
 AT  
**GREENSPRINGS, A CONDOMINIUM**  
 FOR  
**GREENSPRINGS DEVELOPMENT, L.C.**  
 BERKELEY DISTRICT JAMES CITY COUNTY, VIRGINIA

Hassell & Folkes, P.C. Engineers Surveyors Planners Chesapeake, VA 23320 (757) 547-9531	SIZE: C	CONTRACT NO: 95-079	FILE NAME: S:\PLATS\FAIRWAYS\FAIRWAY46.DWG	REV.
	SCALE: NONE	DATE: 11/14/05	SHEET 6 of 6	