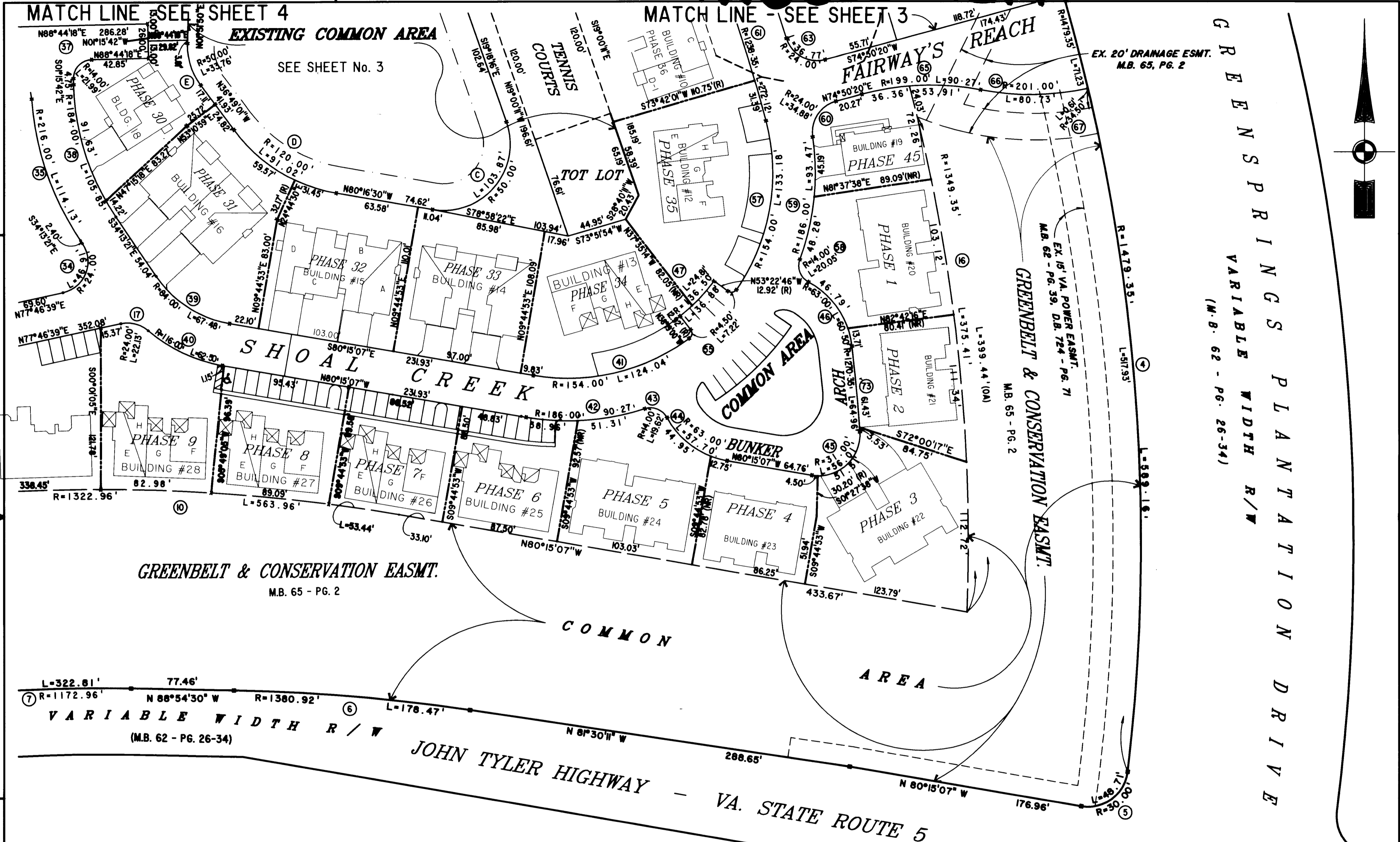
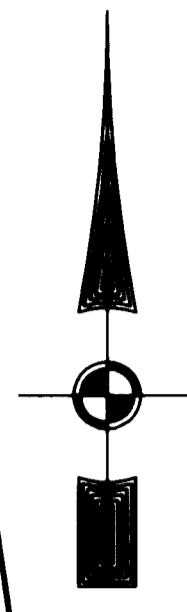


#060017217



GREENSPRINGS PLANTATION DRIVE  
 VARIABLE WIDTH R/W  
 (M.B. 62 - PG. 26-34)



City of Williamsburg & County of James City  
 Circuit Court. This PLAT was recorded on  
 18 July 2006  
 at 12:05 PM, PG. 2  
 DOCUMENT # 060017217  
 BETSY B. WOOLRIDGE, CLERK  
 Betsy B. Woolridge Clerk

Large/Small Plat(s) Recorded  
 herewith as # 060017217



**EXHIBIT "A" PHASE 46  
 FAIRWAYS VILLAS**  
 AT  
**GREENSPRINGS, A CONDOMINIUM**  
 FOR  
**GREENSPRINGS DEVELOPMENT, L.C.**  
 BERKELEY DISTRICT JAMES CITY COUNTY, VIRGINIA

Hassell & Folkes, P.C. Engineers Surveyors Planners Chesapeake, VA. 23320 (757)547-9531	SIZE C	CONTRACT NO 95-079	FILE NAME S:\PLATS\FAIRWAYS\FAIRWAY46.DWG	REV.
SCALE: 1" = 50'		DATE: 11/14/05		SHEET 2 of 6