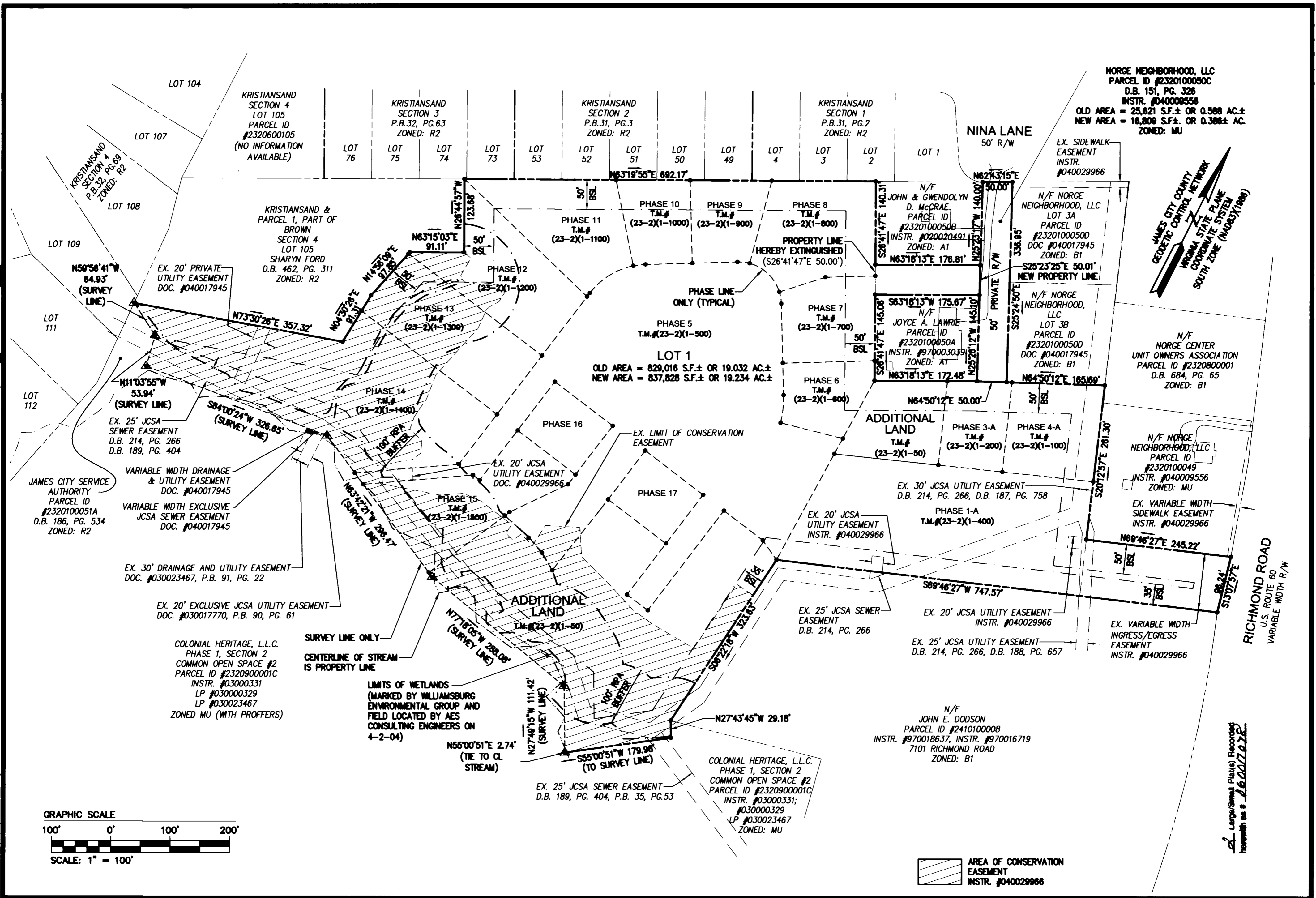


#060017078



E:\vats\9286\07_norge\fig\hrc\51fe-plum\dwg\plans\p17_928601814_50ra_sr_7.dwg, 5/17/2006 2:09:15 PM



5248 Olde Towne Road, Suite 1
 Williamsburg, Virginia 23188
 (757) 253-0040
 Fax (757) 220-8994

PLAT OF BOUNDARY LINE ADJUSTMENT
 BETWEEN LOT 1 AND 50' PRIVATE RIGHT-OF-WAY
 BEING THE PROPERTY OF
 NORGE NEIGHBORHOOD, LLC

STONEHOUSE DISTRICT COUNTY OF JAMES CITY VIRGINIA



City of Williamsburg & County of James City	
Circuit Court: This PLAT was recorded on	
at 11:23 AM/PM, PG. 17 July 2006	
DOCUMENT # 060017078	
BETSY B. WOOLRIDGE, CLERK	
Betsy B. Woolridge Clerk	
1	5/16/06 REVISED PER COUNTY COMMENTS RDM
No.	DATE REVISION / COMMENT / NOTE BY

Designed	Drawn
VMB/JAG	AWT
Scale	Date
1"=100'	12/19/05
Project No.	
9286-01	
Drawing No.	
2 of 2	