

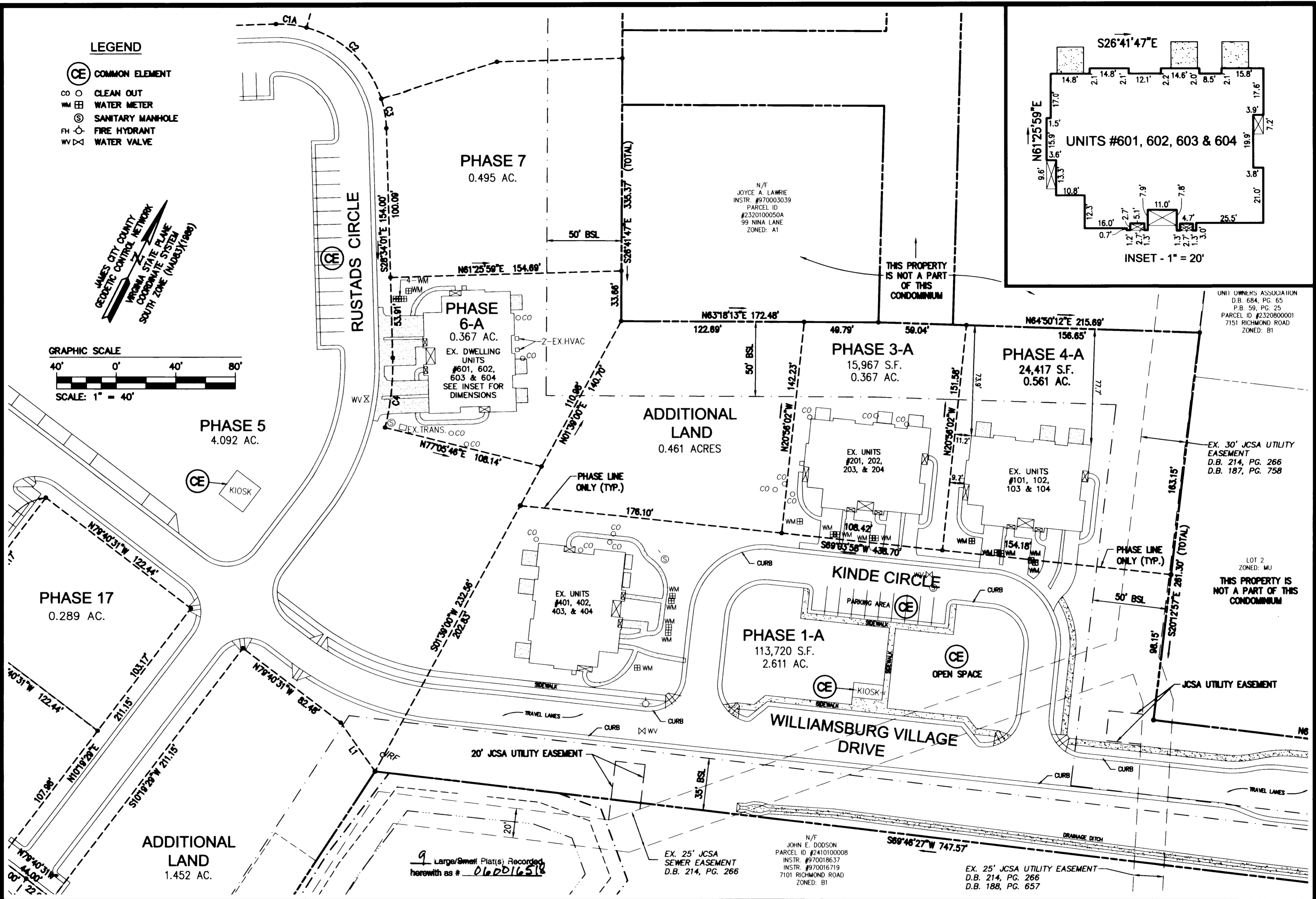
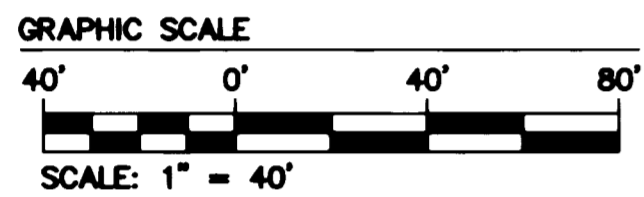
# #060016518

S:\kiba\9256\02\_Norge\_Corridor\_Plats\Records\Phase 6\_A\9256\02\_Corridor\_Phase 6\_A\_01.dwg, 6/29/2006 2:56:46 PM

**LEGEND**

- CE COMMON ELEMENT
- CO CLEAN OUT
- WM WATER METER
- SM SANITARY MANHOLE
- FH FIRE HYDRANT
- WV WATER VALVE

JAMES CITY COUNTY  
GEODETIC CONTROL NETWORK  
VIRGINIA STATE PLANE  
COORDINATE SYSTEM  
SOUTH ZONE (NAD83)(1983)



5248 Olde Towne Road, Suite 1  
Williamsburg, Virginia 23188  
(757) 253-0040  
Fax (757) 220-8994

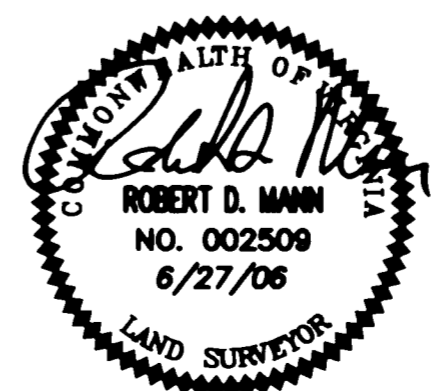
**"EXHIBIT 1"**

PLAT OF CONDOMINIUM

**WILLIAMSBURG VILLAGE AT NORGE CONDOMINIUM**

PHASE 6-A  
UNITS #601, 602, 603, AND 604

STONEHOUSE DISTRICT    COUNTY OF JAMES CITY    VIRGINIA



|   |      |                           |    |
|---|------|---------------------------|----|
| City of Williamsburg & County of James City |      |                           |    |
| Circuit Court: This PLAT was recorded on    |      |                           |    |
| at 12:02 AM/PM, PG. 2                       |      |                           |    |
| DOCUMENT # 060016518                        |      |                           |    |
| BETSY B. WOOLRIDGE, CLERK                   |      |                           |    |
| <i>Betsy B. Woolridge</i> Clerk             |      |                           |    |
| No.   | DATE | REVISION / COMMENT / NOTE | BY |
|   |      |                           |    |

|                       |                 |
|-----------------------|-----------------|
| Designed<br>VMB/JAG   | Drawn<br>AWT    |
| Scale<br>1"=40'       | Date<br>6/27/06 |
| Project No.<br>9286-2 |                 |
| Drawing No.<br>2 of 9 |                 |