

#060016516

PLAT OF PROPERTY

TO BE CONVEYED TO
DONALD L. HAZELWOOD, INC.,
BEING

348.93 ACRES

LOCATED: STONEHOUSE DISTRICT
JAMES CITY COUNTY, VIRGINIA

DATE: DECEMBER 15, 2005 SCALE: 1" = 200'

MITCHELL-WILSON ASSOCIATES, P.C.

CIVIL ENGINEERS & LAND SURVEYORS

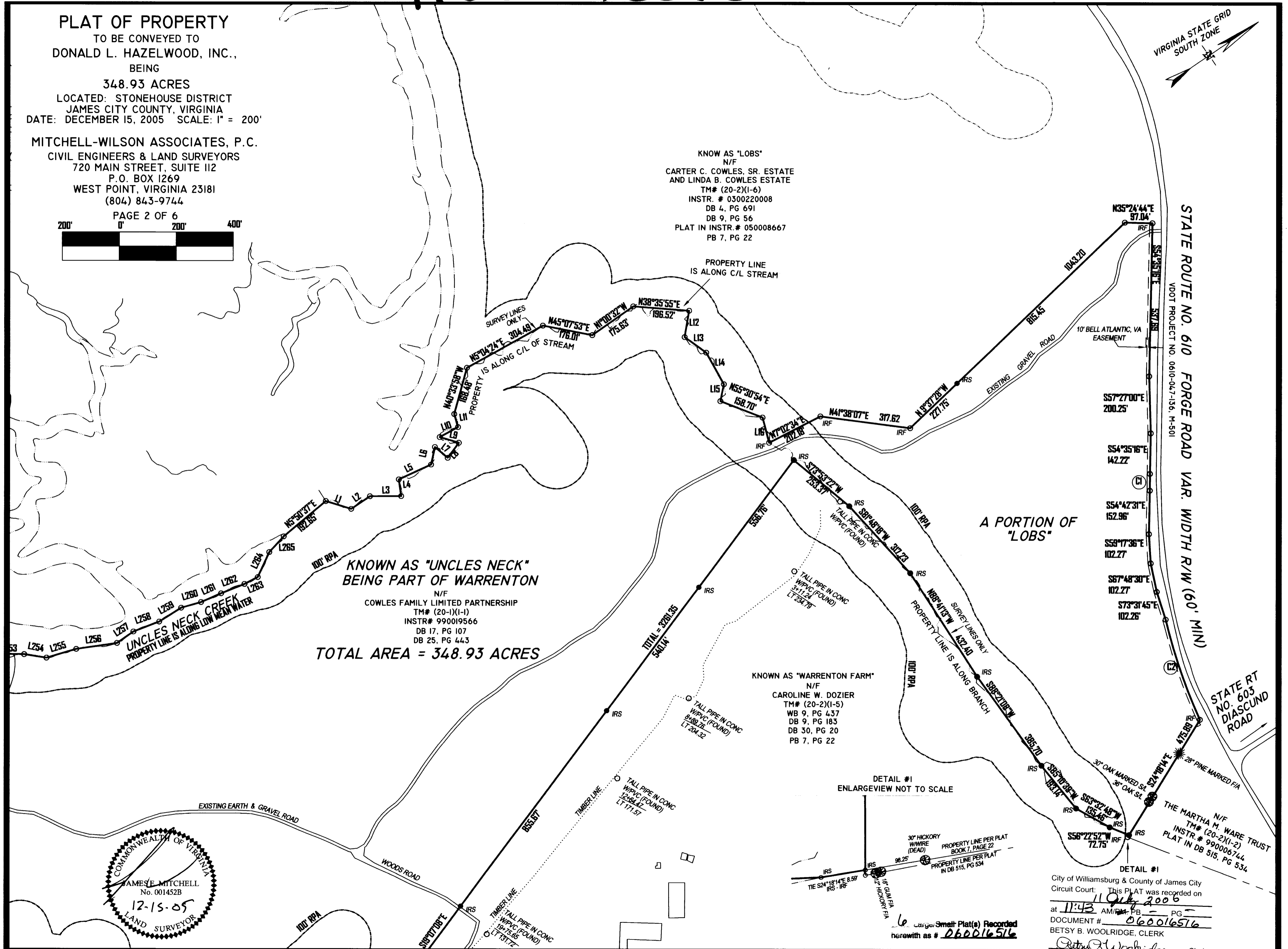
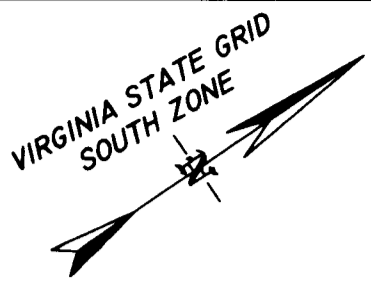
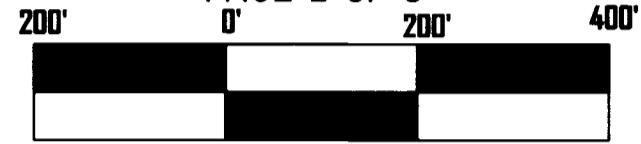
720 MAIN STREET, SUITE 112

P.O. BOX 1269

WEST POINT, VIRGINIA 23181

(804) 843-9744

PAGE 2 OF 6



KNOW AS "LOBS"
N/F
CARTER C. COWLES, SR. ESTATE
AND LINDA B. COWLES ESTATE
TM# (20-2)(1-6)
INSTR. # 0300220008
DB 4, PG 691
DB 9, PG 56
PLAT IN INSTR. # 050008667
PB 7, PG 22

KNOWN AS "UNCLES NECK"
BEING PART OF WARRENTON

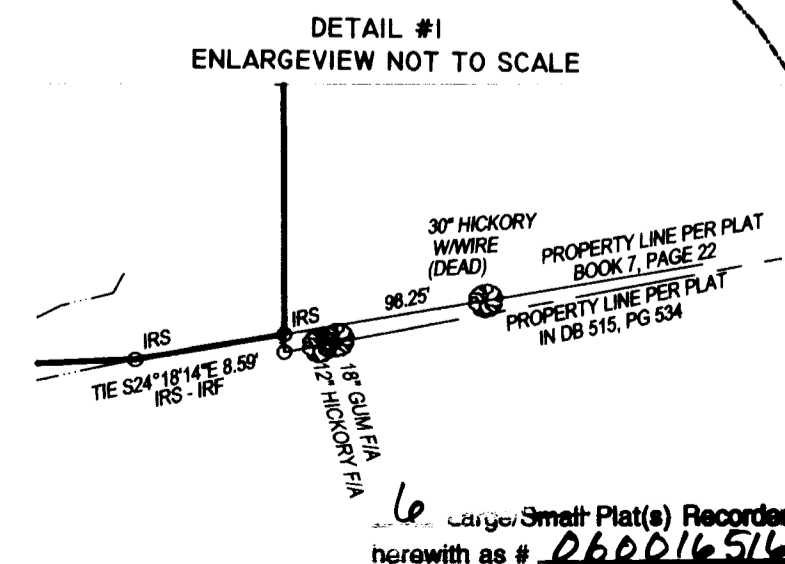
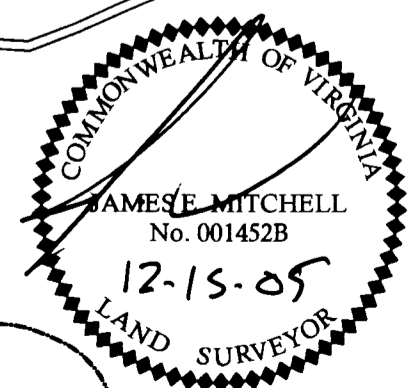
N/F
COWLES FAMILY LIMITED PARTNERSHIP
TM# (20-1)(1-1)
INSTR# 990019566
DB 17, PG 107
DB 25, PG 443

TOTAL AREA = 348.93 ACRES

KNOWN AS "WARRENTON FARM"
N/F
CAROLINE W. DOZIER
TM# (20-2)(1-5)
WB 9, PG 437
DB 9, PG 183
DB 30, PG 20
PB 7, PG 22

STATE ROUTE NO. 610 FORGE ROAD VAR. WIDTH R/W (60' MIN)

STATE RT
NO. 603
DIASCUND
ROAD



City of Williamsburg & County of James City
Circuit Court: This PLAT was recorded on
11 July 2006
at 11:43 AM/PM PB PG
DOCUMENT # 060016516
BETSY B. WOOLRIDGE, CLERK
Betsy B. Woolridge Clerk

Large/Small Plat(s) Recorded
herewith as # 060016516