

#060016179

City of Williamsburg & County of James City
 Circuit Court: This PLAT was recorded on
 at 3:29 AM PM, PG 317M
 DOCUMENT # 060016179
 Betsy B. Woolridge, Clerk
Betsy B. Woolridge Clerk

**SUBDIVISION PLAT SHOWING
 STONEHOUSE GLEN,
 SECTIONS 1 & 2
 AND RIGHT OF WAY OF
 FIELDSTONE PARKWAY
 BEING A SUBDIVISION OF THE PROPERTY OF
 FIELDSTONE INVESTMENT, LLC
 AND STONEHOUSE GLEN, LLC**

STONEHOUSE DISTRICT, JAMES CITY COUNTY, VIRGINIA
 DATE: 05/31/06 SCALE: 1"=100'
 SHEET 6 OF 13

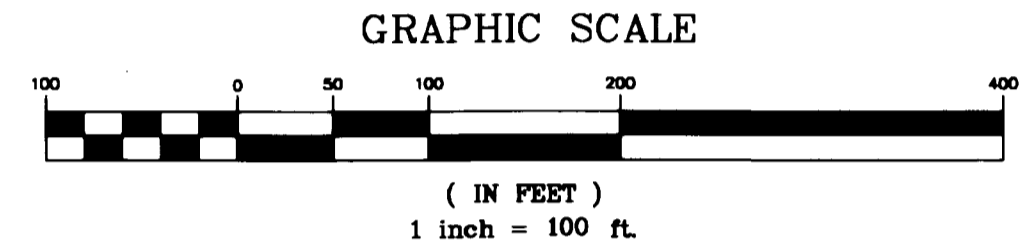


4029 Ironbound Road
 Suite 100
 Williamsburg, VA 23188
 Tel. (757) 253-2975
 Fax (757) 229-0049
 Email: lmdg@landmarkdg.com

5544 Greenwich Road
 Suite 200
 Virginia Beach, VA 23462
 Tel. (757) 473-2000
 Fax (757) 497-7933
 Email: lmdg@landmarkdg.com



SEE SHEETS 12 AND 13 FOR
 DIMENSIONING OF NATURAL OPEN SPACE
 EASEMENT WITHIN SUBDIVIDED LOTS.



- PROPERTY TO BE CONVEYED TO HOMEOWNERS ASSOCIATION. CONSERVATION AND NATURAL OPEN SPACE EASEMENT TO BE GRANTED TO JAMES CITY COUNTY.
- PROPERTY TO BE CONVEYED TO HOMEOWNERS ASSOCIATION, SUBJECT TO 20' JCSA UTILITY EASEMENT.
- CONSERVATION AND NATURAL OPEN SPACE EASEMENT TO BE GRANTED TO JAMES CITY COUNTY.
- INDICATES LOT WHERE PRIVATE SANITARY SEWER GRINDER PUMP IS REQUIRED TO CONNECT TO PUBLIC SANITARY SEWER. ALL GRINDER PUMPS ARE TO BE ENVIRONMENT ONE CORPORATION, MODEL "E-ONE" OR EQUIVALENT.
- L.O.P.=LIMIT OF PERENNIAL STREAM

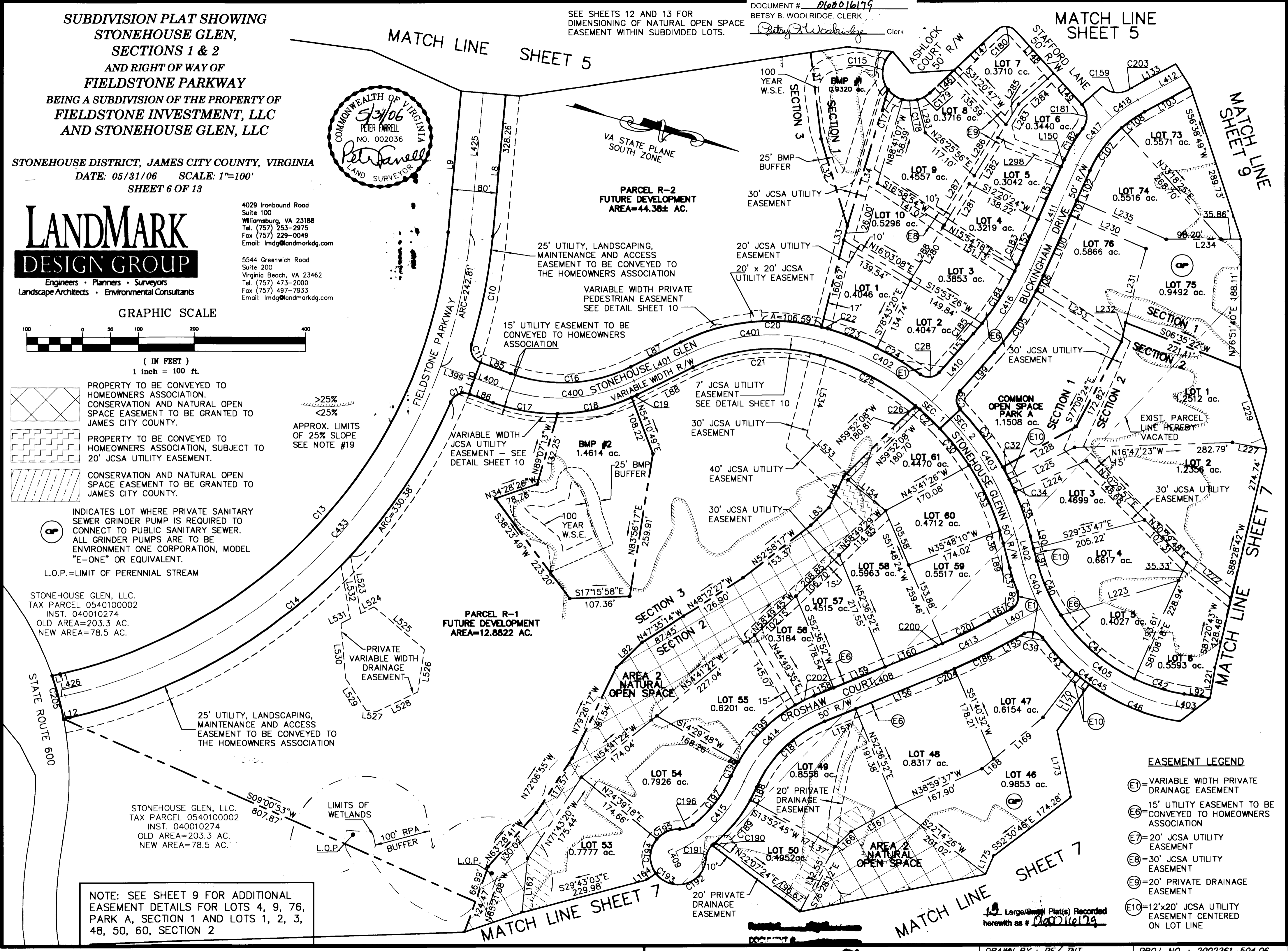
STONEHOUSE GLEN, LLC.
 TAX PARCEL 0540100002
 INST. 040010274
 OLD AREA=203.3 AC.
 NEW AREA=78.5 AC.

STONEHOUSE GLEN, LLC.
 TAX PARCEL 0540100002
 INST. 040010274
 OLD AREA=203.3 AC.
 NEW AREA=78.5 AC.

NOTE: SEE SHEET 9 FOR ADDITIONAL
 EASEMENT DETAILS FOR LOTS 4, 9, 76,
 PARK A, SECTION 1 AND LOTS 1, 2, 3,
 48, 50, 60, SECTION 2

>25%
 <25%
 APPROX. LIMITS
 OF 25% SLOPE
 SEE NOTE #19

LIMITS OF WETLANDS
 100' RPA
 BUFFER



- EASEMENT LEGEND**
- (E1) = VARIABLE WIDTH PRIVATE DRAINAGE EASEMENT
 - (E2) = 15' UTILITY EASEMENT TO BE CONVEYED TO HOMEOWNERS ASSOCIATION
 - (E3) = 20' JCSA UTILITY EASEMENT
 - (E4) = 30' JCSA UTILITY EASEMENT
 - (E5) = 20' PRIVATE DRAINAGE EASEMENT
 - (E6) = 12'x20' JCSA UTILITY EASEMENT CENTERED ON LOT LINE

Large Plat(s) Recorded
 herewith as # 060016179

DRAWN BY: PF/TNT
 CHKD. BY: AST

PROJ. NO.: 2002261-504.06
 DWG. NO.: 16669W