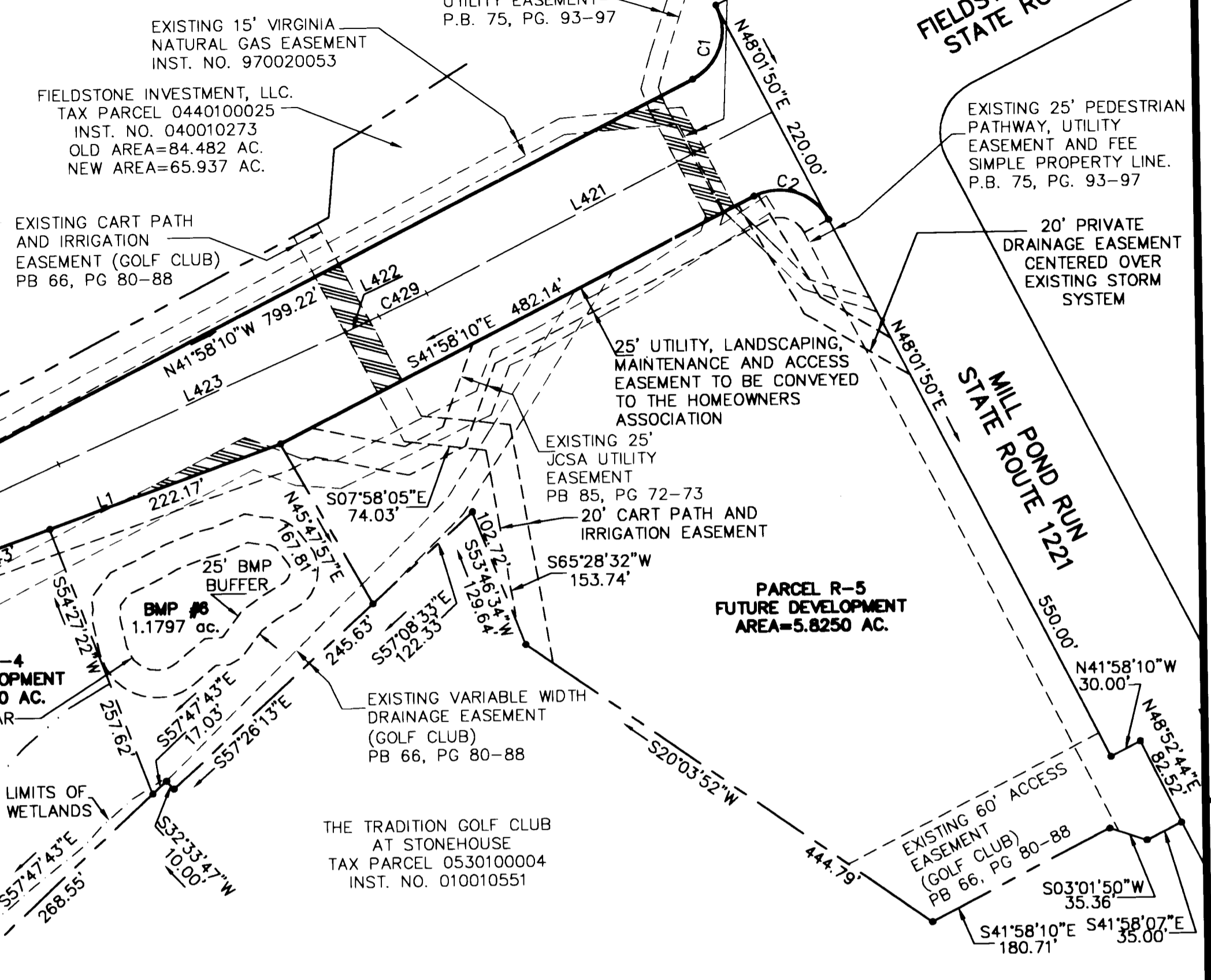


# #060016179

LINE TABLE			LINE TABLE			LINE TABLE		
LINE	LENGTH	BEARING	LINE	LENGTH	BEARING	LINE	LENGTH	BEARING
L188	20.43'	S30°09'43"E	L230	148.64'	S08°39'39"W	L264	111.25'	N08°26'13"E
L189	164.37'	S30°09'43"E	L231	137.21'	S89°46'44"E	L265	75.16'	S82°06'26"E
L190	16.77'	S30°09'43"E	L232	35.25'	N87°34'53"E	L266	163.50'	S56°30'36"E
L191	16.88'	N87°14'53"W	L233	177.80'	N15°53'26"E	L267	152.67'	N18°53'42"W
L192	106.75'	S51°15'04"W	L234	134.06'	S15°03'14"E	L268	143.64'	N02°17'32"E
L193	77.83'	N43°41'06"E	L235	174.81'	S08°39'39"W	L269	151.11'	N31°20'47"E
L194	55.93'	N37°34'04"W	L236	43.21'	S07°32'02"E	L270	67.74'	S68°56'47"E
L195	121.86'	N74°22'38"W	L237	135.64'	S67°54'31"E	L271	90.60'	N72°06'14"E
L196	165.89'	N88°42'24"E	L238	46.74'	N41°06'34"E	L272	304.01'	N31°20'47"E
L197	135.16'	S71°22'26"W	L239	163.23'	N30°22'50"E	L273	231.84'	N31°20'47"E
L198	121.38'	S50°14'58"E	L240	27.24'	S03°59'14"E	L274	231.84'	N31°20'47"E
L199	126.23'	S51°40'55"W	L241	99.43'	S17°15'41"W	L275	56.25'	S31°20'47"W
L200	117.94'	S19°50'05"E	L242	107.92'	N85°23'40"W	L276	95.24'	S68°48'53"W
L201	135.55'	S21°03'56"E	L243	94.19'	N56°46'53"W	L277	93.68'	N58°39'13"W
L202	96.91'	N82°04'37"E	L244	197.09'	N68°24'36"E	L278	183.98'	S68°48'53"W
L203	103.06'	N35°56'05"E	L245	222.73'	N68°24'36"E	L279	58.93'	S31°20'47"W
L204	94.37'	N79°21'34"W	L246	167.42'	N68°24'36"E	L280	110.00'	N73°46'37"W
L205	91.13'	N07°03'59"W	L247	60.47'	S44°50'23"E	L281	92.48'	N73°46'37"W
L206	101.69'	N57°09'15"W	L248	187.40'	S16°23'20"E	L282	97.88'	N73°46'37"W
L207	126.26'	S81°14'37"W	L249	132.73'	S73°37'50"W	L283	70.83'	N73°46'37"W
L208	32.56'	S77°01'35"E	L250	117.76'	S26°54'55"E	L284	84.66'	N56°41'35"W
L209	110.71'	S54°30'33"W	L251	210.98'	S83°42'58"E	L285	42.87'	S73°46'37"E
L210	139.80'	S88°13'20"E	L252	130.00'	S83°42'58"E	L286	108.59'	S73°46'37"E
L211	105.81'	S57°46'43"E	L253	100.00'	S06°17'02"W	L287	103.59'	S73°46'37"E
L212	149.82'	N86°47'39"E	L254	130.00'	S83°42'58"E	L288	116.15'	S73°46'37"E
L213	110.57'	S74°17'23"E	L255	58.60'	S88°33'03"W			
L214	130.28'	N19°23'42"W	L256	62.94'	S78°57'33"W			
L215	100.69'	N07°45'49"E	L257	139.40'	S81°35'02"W			
L216	29.93'	N07°45'49"E	L258	97.46'	N89°26'27"E			
L217	56.87'	N07°45'49"E	L259	104.34'	N67°54'31"W			
L218	79.73'	S23°42'00"W	L260	105.00'	N67°54'31"W			
L219	38.65'	S89°58'56"E	L261	105.00'	N67°54'31"W			
L220	109.25'	S85°41'00"E	L262	110.00'	N67°54'31"W			
L221	55.93'	S83°51'16"W	L263	83.55'	S56°41'35"E			
L222	101.14'	N23°41'58"E						
L223	219.36'	S31°37'34"E						
L224	139.51'	N38°43'46"W						
L225	129.91'	N41°27'31"W						
L227	62.89'	N04°08'36"W						
L228	150.00'	S44°11'11"E						
L229	153.75'	S57°01'49"W						

INDICATES PORTIONS OF EASEMENTS TO BE ABANDONED BY DEEDS OF QUITCLAIM TO BE RECORDED SIMULTANEOUSLY WITH THIS PLAT.



FIELDSTONE INVESTMENT, LLC.  
TAX PARCEL 0440100025  
INST. NO. 040010273  
OLD AREA=84.482 AC.  
NEW AREA=65.937 AC.

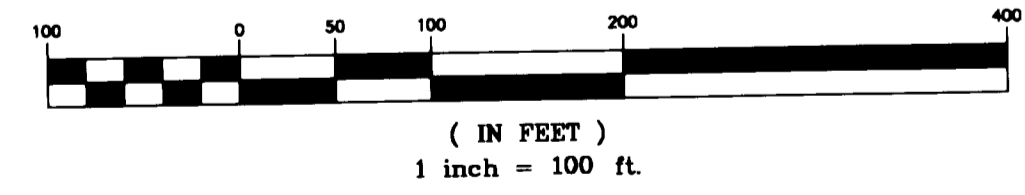
JAMES CITY SERVICE AUTHORITY  
TAX PARCEL 0530100014  
WELL FACILITY W-25  
INST. NO. 020018005  
PB 85, PG 72-73

THE TRADITION GOLF CLUB  
AT STONEHOUSE  
TAX PARCEL 0530100004  
INST. NO. 010010551

City of Williamsburg & County of James City  
Circuit Court: This PLAT was recorded on  
7 July 2006  
at 2:37 AM/PM, PB — PG —  
DOCUMENT # 060016179  
BETSY B. WOOLRIDGE, CLERK  
Betsy B. Woolridge Clerk

13 Large/Small Plates Recorded  
herewith as # 060016179

GRAPHIC SCALE



**SUBDIVISION PLAT SHOWING  
STONEHOUSE GLEN,  
SECTIONS 1 & 2  
AND RIGHT OF WAY OF  
FIELDSTONE PARKWAY**  
BEING A SUBDIVISION OF THE PROPERTY OF  
**FIELDSTONE INVESTMENT, LLC  
AND STONEHOUSE GLEN, LLC**

STONEHOUSE DISTRICT, JAMES CITY COUNTY, VIRGINIA  
DATE: 05/31/06 SCALE: 1"=100'  
SHEET 3 OF 13

**LANDMARK  
DESIGN GROUP**  
Engineers • Planners • Surveyors  
Landscape Architects • Environmental Consultants

4029 Ironbound Road  
Suite 100  
Williamsburg, VA 23188  
Tel. (757) 253-2975  
Fax (757) 229-0049  
Email: lmdg@landmarkdg.com  
  
5544 Greenwich Road  
Suite 200  
Virginia Beach, VA 23462  
Tel. (757) 473-2000  
Fax (757) 497-7933  
Email: lmdg@landmarkdg.com



LINE	LENGTH	BEARING
L289	21.78'	S67°54'31"E
L290	116.78'	N67°54'31"W
L291	134.19'	N67°54'31"W
L292	151.60'	N67°54'31"W
L293	61.94'	N61°02'03"E
L294	11.11'	S35°12'20"E
L295	7.59'	S43°51'05"W
L296	10.00'	S72°06'14"W
L297	7.59'	S43°51'05"W
L298	125.07'	N09°31'46"E

MATCH LINE SHEET 4