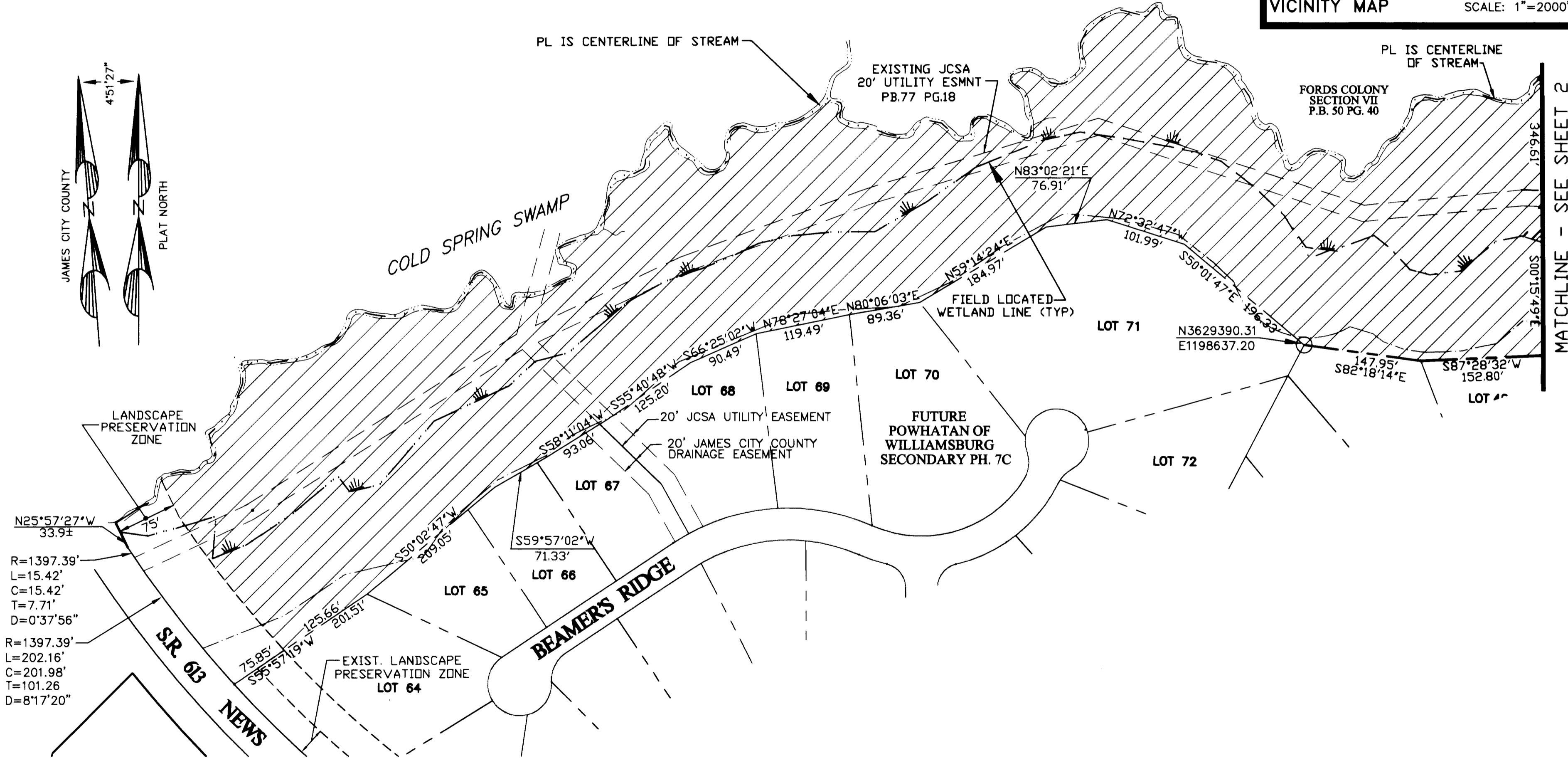
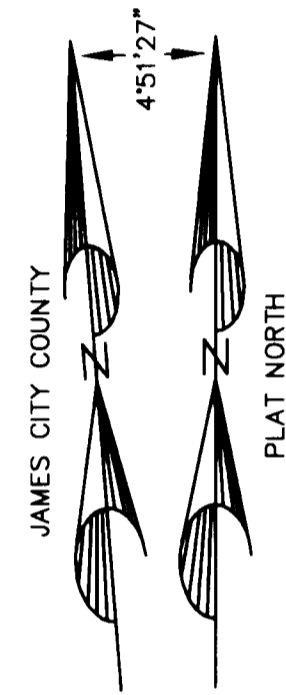


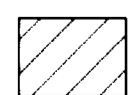
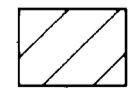

# #060015330

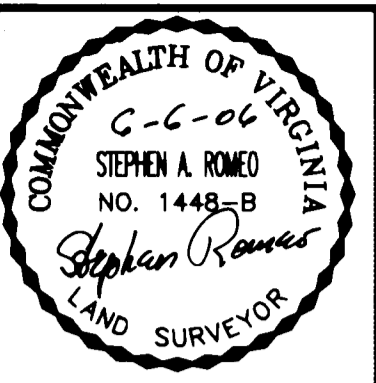
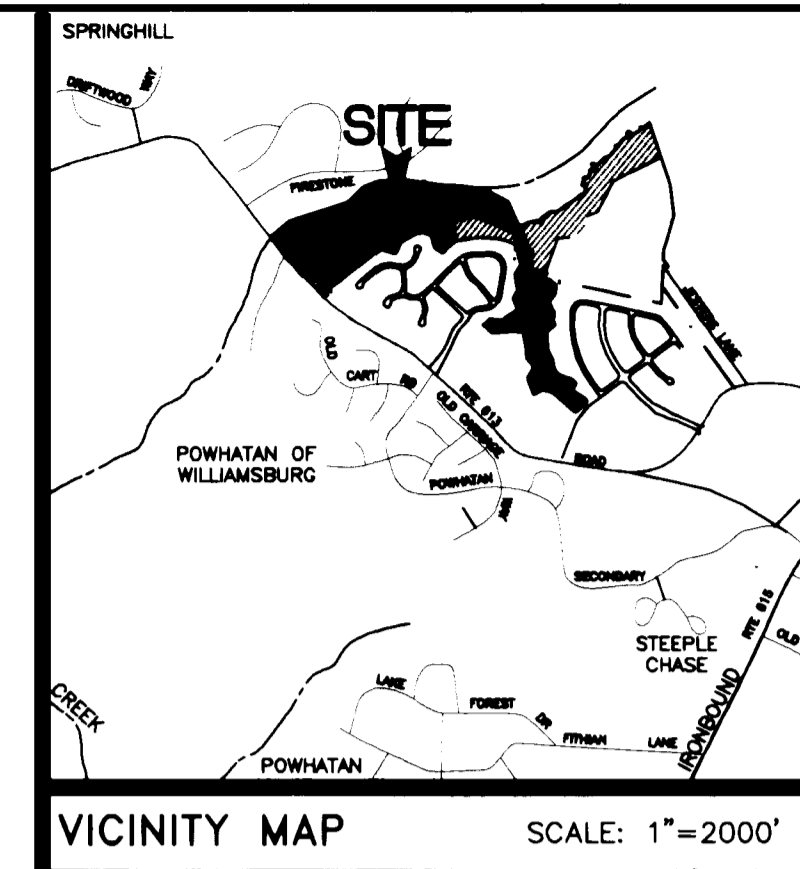


**NOTES:**

1. THE COORDINATES SHOWN ON THIS PLAT ARE TIED TO NAD 83: REFERENCE JCC STATION 322 AND 321RM3AZ.
2. IN AREAS DESIGNATED LANDSCAPE PRESERVATION ZONE (L.P.Z.) NO TREES MAY BE CUT WITHOUT PRIOR APPROVAL OF THE POWHATAN COMMUNITY SERVICES ASSOCIATION OR A COMMITTEE DESIGNATED THEREBY AND NO PERMANENT STRUCTURES MAY BE ERECTED WITHIN THE L.P.Z.
3. TOTAL PROPOSED CONSERVATION EASEMENT = 23.60± AC. (AREA WITHIN BMP ONLY = 10.56± AC.)

**LEGEND**

-  EXISTING CONSERVATION EASEMENT
-  PROPOSED CONSERVATION EASEMENT
-  PROPOSED CONSERVATION EASEMENT WITHIN BMP AREA



4029 Ironbound Road  
Suite 100  
Williamsburg, VA 23186  
Tel: (757) 253-2825  
Fax: (757) 228-0049  
Email: [imgd@landmarkdg.com](mailto:imgd@landmarkdg.com)

5544 Greenwich Road  
Suite 200  
Virginia Beach, VA 23462  
Tel: (757) 473-2000  
Fax: (757) 497-7933  
Email: [imgd@landmarkdg.com](mailto:imgd@landmarkdg.com)

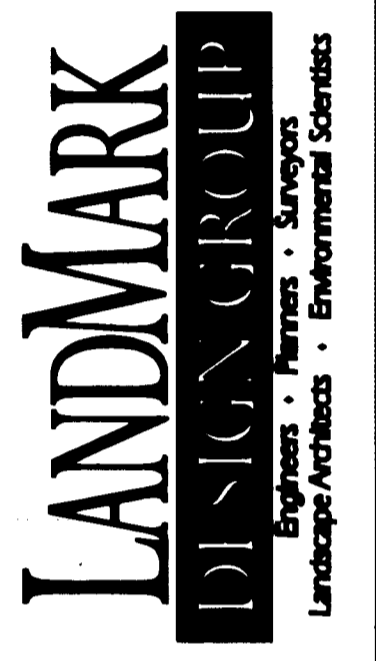
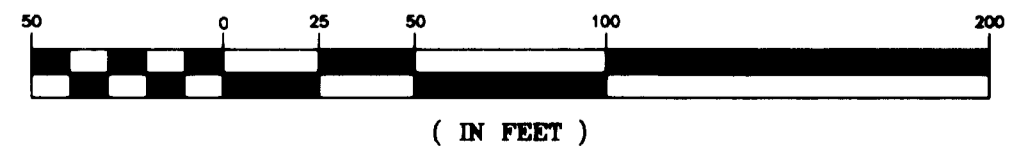


EXHIBIT "A" SHOWING  
PROPERTY OF  
POWHATAN ENTERPRISES, INC.  
CONSERVATION EASEMENT  
TO BE DEDICATED TO  
WILLIAMSBURG LAND CONSERVANCY  
JAMES CITY COUNTY, VIRGINIA

City of Williamsburg & County of James City  
Circuit Court: This PLAT was recorded on  
27 June 2008  
at 10:43 AM/PM, PB     PG      
DOCUMENT # 060015330  
BETSY B. WOOLRIDGE, CLERK  
*Betsy B. Woolridge* Clerk

3 Large/Small Plat(s) Recorded  
herewith as # 060015330

**GRAPHIC SCALE**

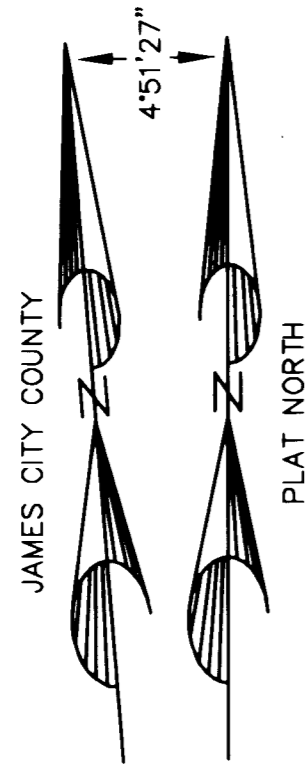
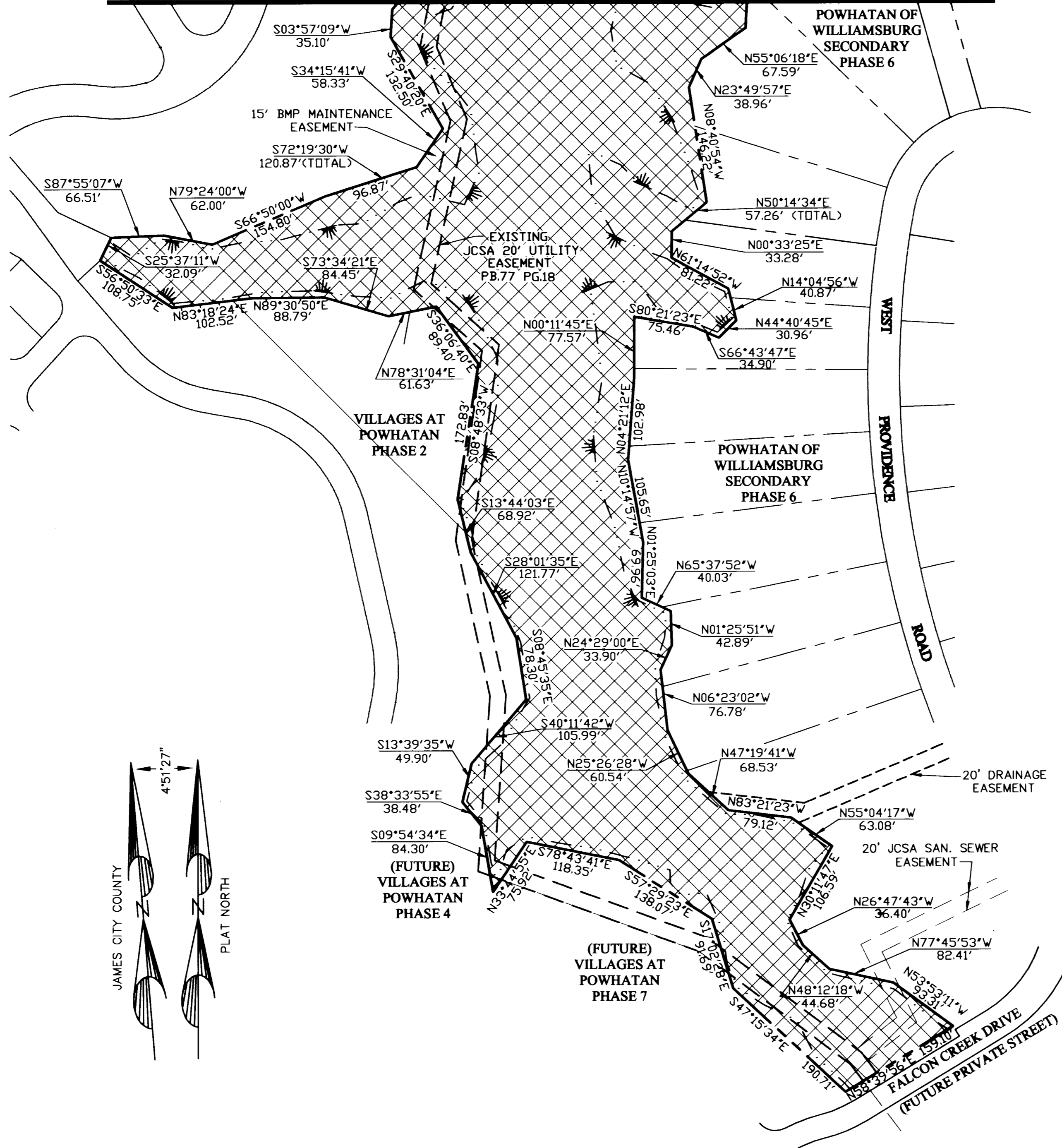


Designed:	Date:
Checked: SAR	5/30/06
File Mgr./Drawn: LFV	Scale: 1"=100'
Project Number: 1780041-148	CADD File name: CONSERVMLC
Dwg. File No.: 17212 W	
Drawing Number:	<b>1</b>



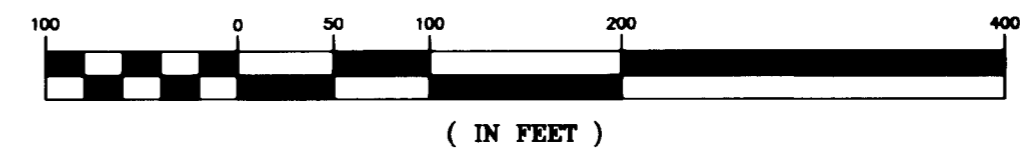
#060015330

MATCHLINE - SEE SHEET 2



City of Williamsburg & County of James City  
 Circuit Court: This PLAT was recorded on  
27 June 2006  
 at 10:43 AM/PM, PB — PG —  
 DOCUMENT # 060015330  
 BETSY B. WOOLRIDGE, CLERK  
*Betsy B. Woolridge* Clerk

GRAPHIC SCALE



3 Large/Small Plat(s) Recorded  
 herewith as # 060015330



4029 Ironbound Road  
 Suite 100  
 Williamsburg, VA 23186  
 Tel: (757) 253-2875  
 Fax: (757) 229-0049  
 Email: imdg@landmarkdg.com

5544 Greenwich Road  
 Suite 200  
 Virginia Beach, VA 23462  
 Tel: (757) 473-2000  
 Fax: (757) 497-7933  
 Email: imdg@landmarkdg.com

**LANDMARK**  
**DESIGN GROUP**  
 Engineers • Planners • Surveyors  
 Landscape/Architects • Environmental Scientists

EXHIBIT "A" SHOWING  
 PROPERTY OF  
 POWHATAN ENTERPRISES, INC.  
 CONSERVATION EASEMENT  
 TO BE DEDICATED TO  
 WILLIAMSBURG LAND CONSERVANCY  
 JAMES CITY COUNTY, VIRGINIA

Designed:	Date:
-	5/30/06
Checked:	Scale:
SAR	1"=100'
File Mgr./Drawn:	CADD File name:
LFV	CONSERVWLC
Project Number:	Dwg. File No.:
1780041-148.99	17210 W
Drawing Number	