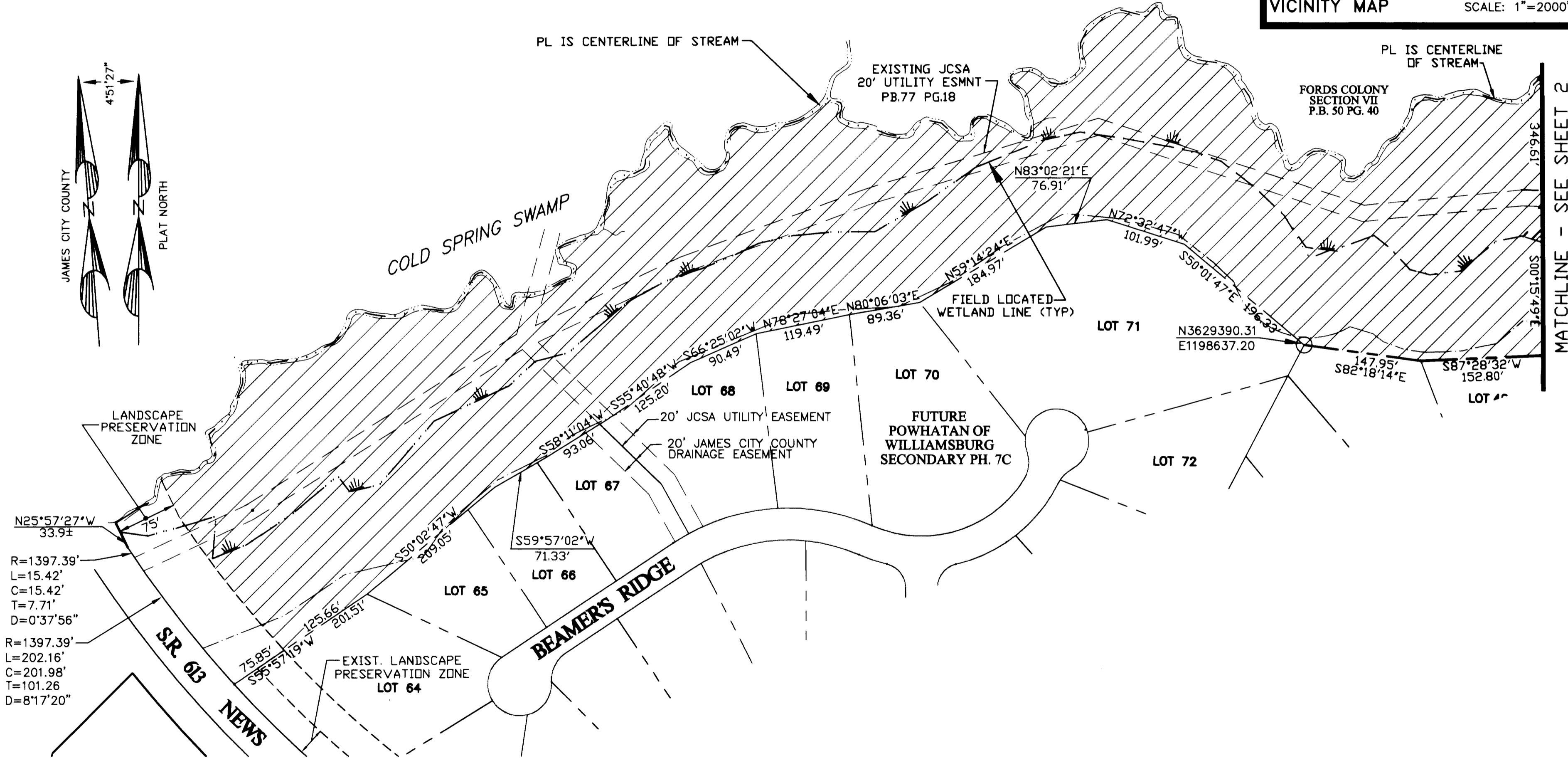
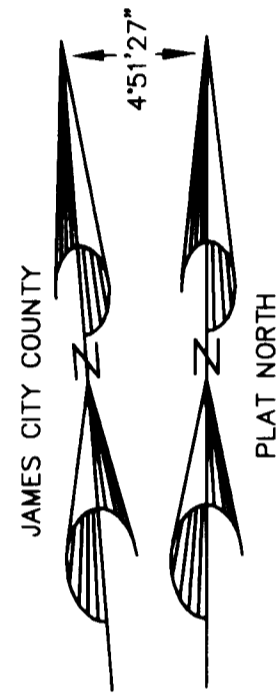


#060015330



NOTES:

1. THE COORDINATES SHOWN ON THIS PLAT ARE TIED TO NAD 83: REFERENCE JCC STATION 322 AND 321RM3AZ.
2. IN AREAS DESIGNATED LANDSCAPE PRESERVATION ZONE (L.P.Z.) NO TREES MAY BE CUT WITHOUT PRIOR APPROVAL OF THE POWHATAN COMMUNITY SERVICES ASSOCIATION OR A COMMITTEE DESIGNATED THEREBY AND NO PERMANENT STRUCTURES MAY BE ERECTED WITHIN THE L.P.Z.
3. TOTAL PROPOSED CONSERVATION EASEMENT = 23.60± AC. (AREA WITHIN BMP ONLY = 10.56± AC.)

LEGEND

- EXISTING CONSERVATION EASEMENT
- PROPOSED CONSERVATION EASEMENT
- PROPOSED CONSERVATION EASEMENT WITHIN BMP AREA

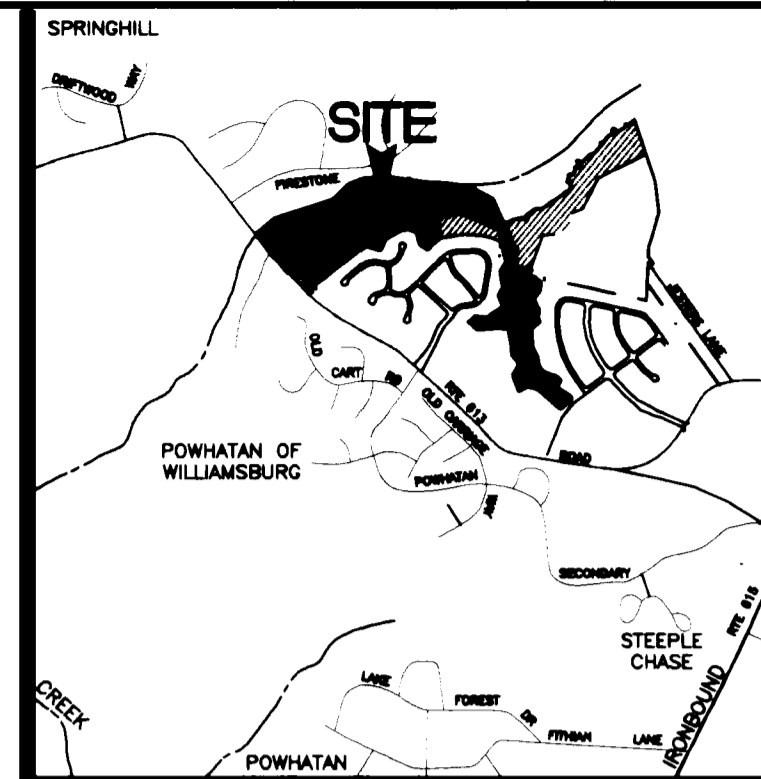
3 Large/Small Plat(s) Recorded herewith as # 060015330

City of Williamsburg & County of James City Circuit Court: This PLAT was recorded on 27 June 2008 at 10:43 AM/PM, PB PG DOCUMENT # 060015330 Betsy B. Woolridge, CLERK

GRAPHIC SCALE

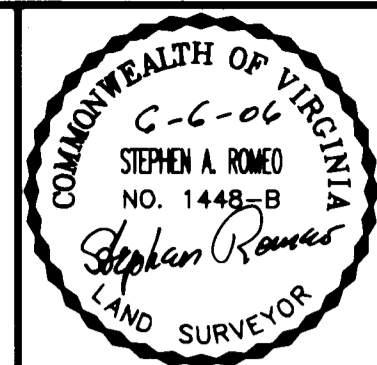


(IN FEET)



VICINITY MAP

SCALE: 1"=2000'



4029 Ironbound Road
Suite 100
Williamsburg, VA 23186
Tel: (757) 253-2825
Fax: (757) 228-0049
Email: imgd@landmarkdg.com

5544 Greenwich Road
Suite 200
Virginia Beach, VA 23462
Tel: (757) 473-2000
Fax: (757) 497-7933
Email: imgd@landmarkdg.com

LANDMARK
DESIGN GROUP
Engineers • Planners • Surveyors
Landscape Architects • Environmental Scientists

EXHIBIT "A" SHOWING
PROPERTY OF
POWHATAN ENTERPRISES, INC.
CONSERVATION EASEMENT
TO BE DEDICATED TO
WILLIAMSBURG LAND CONSERVANCY
JAMES CITY COUNTY, VIRGINIA

Designed:	Date:
Checked: SAR	5/30/08
File Mgr./Drawn: LFV	Scale: 1"=100'
Project Number: 1780041-148	CADD File name: CONSERVMLC
Dwg. File No.: 17212 W	
Drawing Number:	

1