

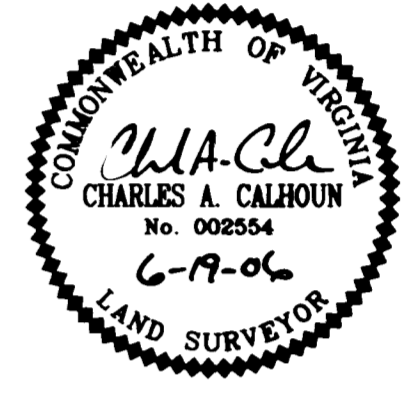
# # 060014819

PHASE 33  
**BRAEMAR CREEK**  
 AT GREENSPRINGS PLANTATION  
 A CONDOMINIUM  
 LOCATED IN THE BERKELEY DISTRICT  
 JAMES CITY COUNTY, VIRGINIA

DATE: 6/19/06 SCALE: 1" = 200' JOB# 05-548-33  
 SHEET 2 OF 2



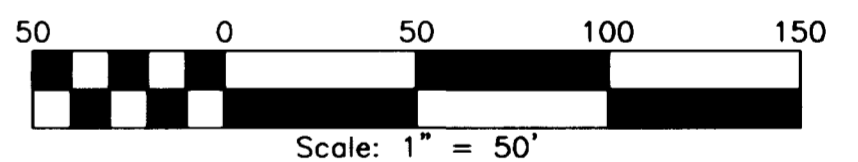
5810-F Mooretown Road, Williamsburg, VA 23188  
 Phone: (757) 565-1677 Fax: (757) 565-0782  
 web: landtechresources.com



**SURVEYORS CERTIFICATE**

I HEREBY CERTIFY THAT TO THE BEST OF MY KNOWLEDGE OR BELIEF, THIS PLAT IS ACCURATE AND COMPLIES WITH THE PROVISIONS OF SECTION 55-79.58 (A) AND (B) OF THE CODE OF VIRGINIA 1950 AS AMENDED AND THAT ALL UNITS DEPICTED HEREON HAVE BEEN SUBSTANTIALLY COMPLETED.

*Charles A. Calhoun*  
 STATE CERTIFIED LAND SURVEYOR      6-19-06  
 DATE



**CURVE TABLE**

NO.	DELTA	CHORD BEARING	TANGENT	RADIUS	ARC	CHORD
C36	15°21'17"	S 80°45'01" W	38.08	282.50	75.71	75.48

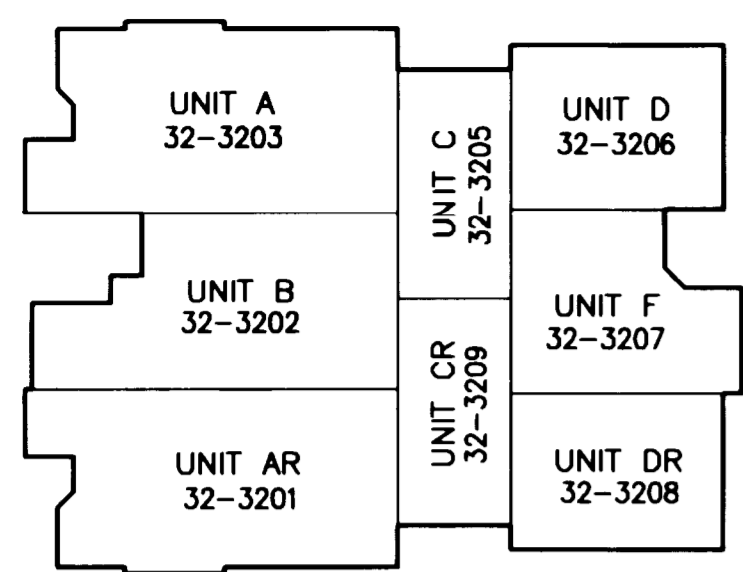
2 Large/Small Plot(s) Recorded  
 herewith as # 060014819

City of Williamsburg & County of James City  
 Circuit Court. This PLAT was recorded on  
 21 June 2006  
 at 3:25 AM, PB PG  
 DOCUMENT # 060014819  
 BETSY B. WOOLRIDGE, CLERK  
*Betsy B. Woolridge* Clerk

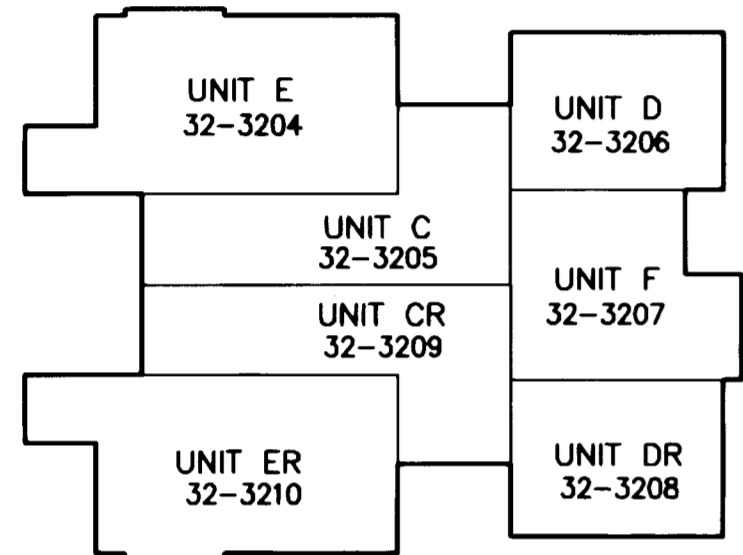
**AREA TABULATIONS**

TOTAL AREA ENCOMPASSED BY THIS CONDOMINIUM PLAT: 39.9215 AC.  
 EX. PHASES: = 4.4753 ACRES (PREVIOUSLY SUBMITTED)   
 PHASE 33: = 0.4440 ACRES (THIS SUBMITTAL)   
 TOTAL ACREAGE OF ADDITIONAL LAND = 35.0022 ACRES

UNIT NUMBER	BUILDING NUMBER	MODEL	STREET ADDRESS
32-3201	32	AR	3201 RANNOCK MOOR
32-3202	32	B	3202 ARRAN THISTLE
32-3203	32	A	3203 ARRAN THISTLE
32-3204	32	E	3204 ARRAN THISTLE
32-3205	32	C	3205 ARRAN THISTLE
32-3206	32	D	3206 ARRAN THISTLE
32-3207	32	F	3207 ARRAN THISTLE
32-3208	32	DR	3208 RANNOCK MOOR
32-3209	32	CR	3209 RANNOCK MOOR
3-3210	32	ER	3210 RANNOCK MOOR



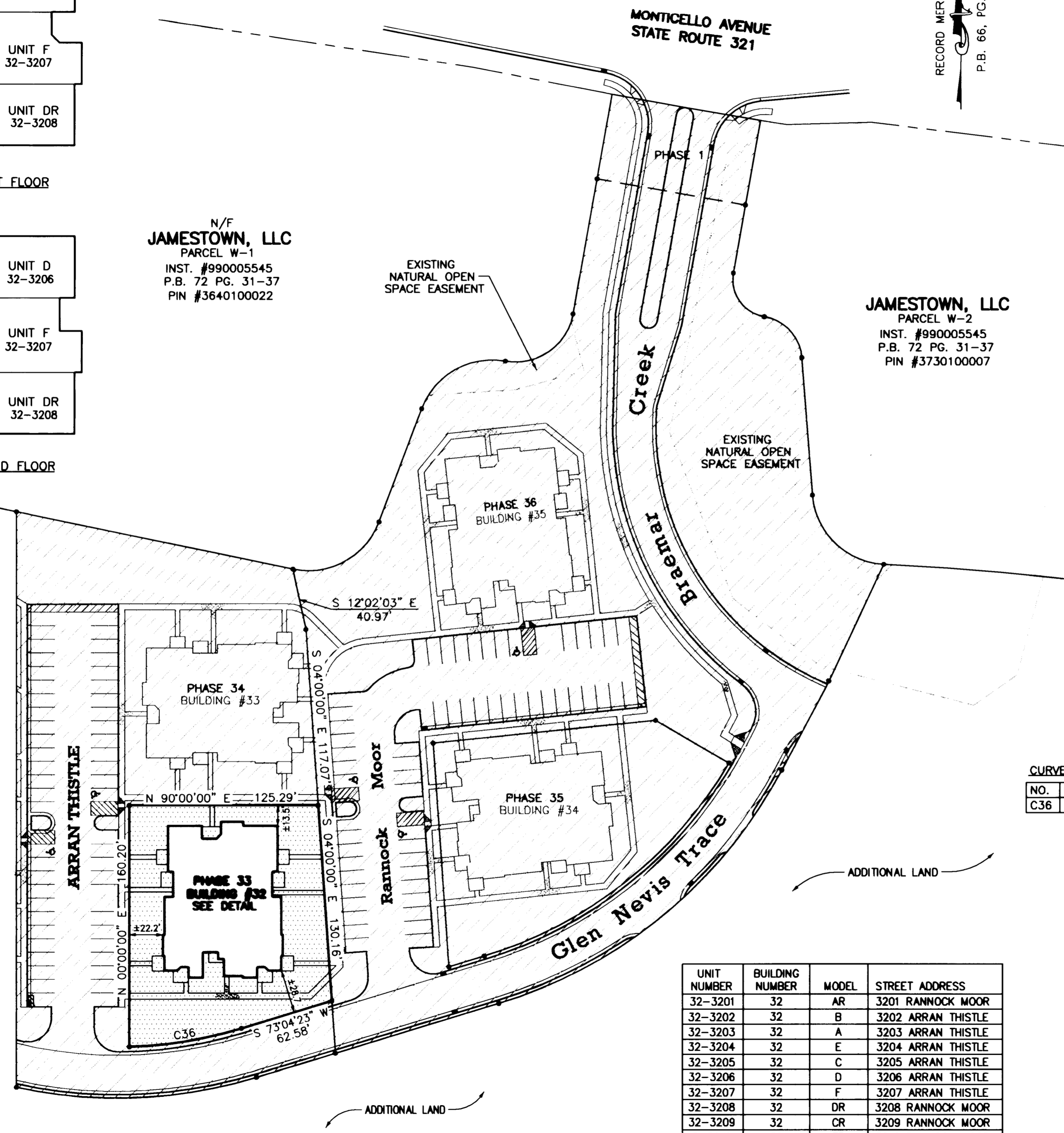
**BUILDING #32 - 1ST FLOOR**  
 N.T.S.



**BUILDING #32 - 2ND FLOOR**  
 N.T.S.

N/F  
**JAMESTOWN, LLC**  
 PARCEL W-1  
 INST. #990005545  
 P.B. 72 PG. 31-37  
 PIN #3640100022

**JAMESTOWN, LLC**  
 PARCEL W-2  
 INST. #990005545  
 P.B. 72 PG. 31-37  
 PIN #3730100007



ADDITIONAL LAND

ADDITIONAL LAND

ADDITIONAL LAND