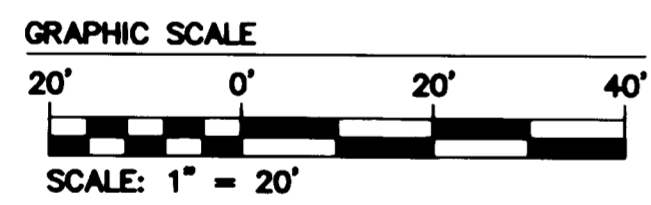
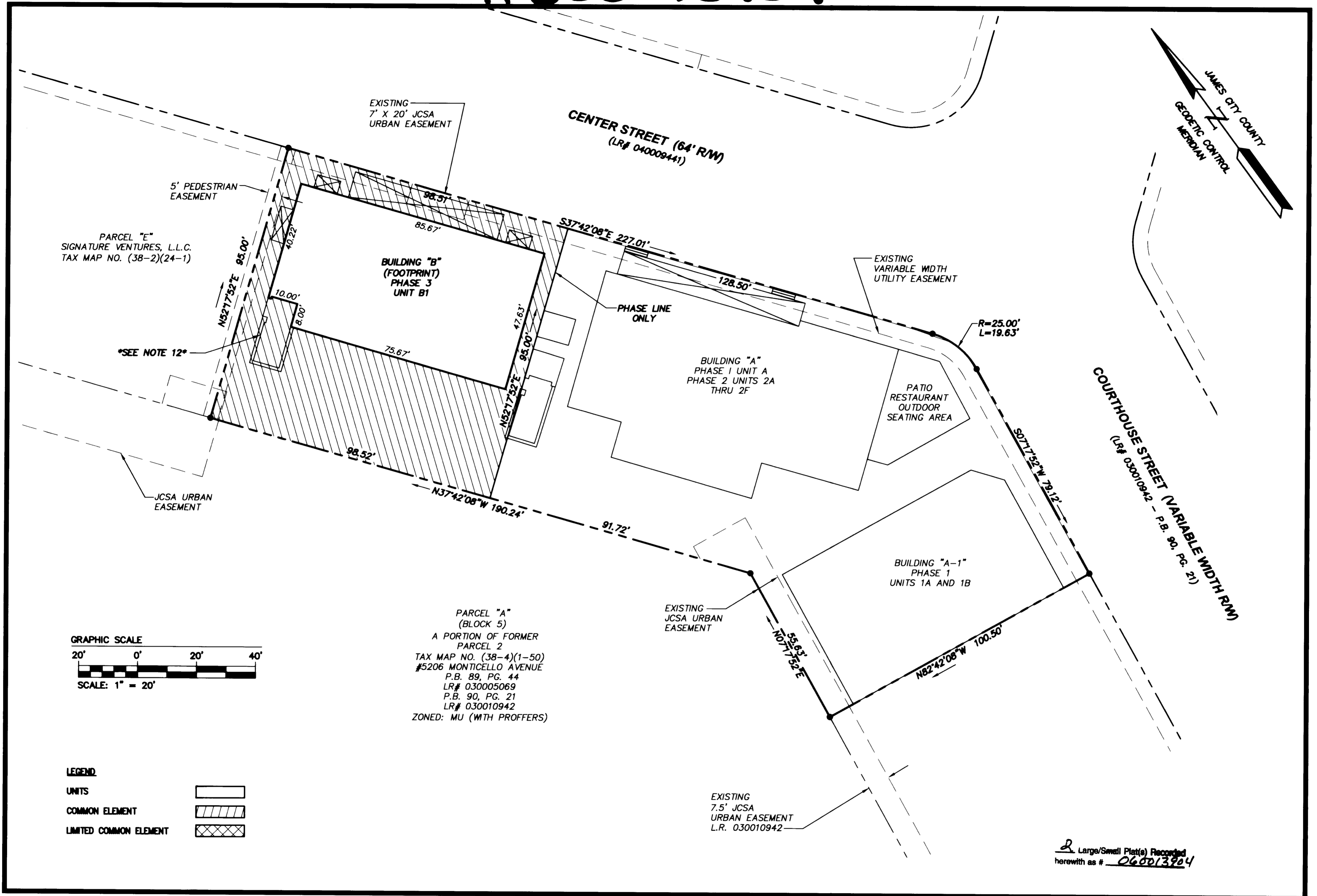


# #060013904

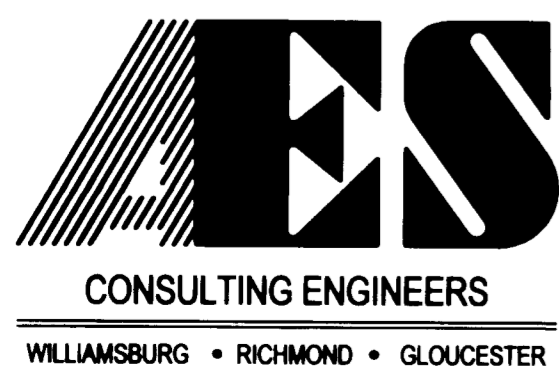


PARCEL "A"  
(BLOCK 5)  
A PORTION OF FORMER  
PARCEL 2  
TAX MAP NO. (38-4)(1-50)  
#5206 MONTICELLO AVENUE  
P.B. 89, PG. 44  
LR# 030005069  
P.B. 90, PG. 21  
LR# 030010942  
ZONED: MU (WITH PROFFERS)

LEGEND

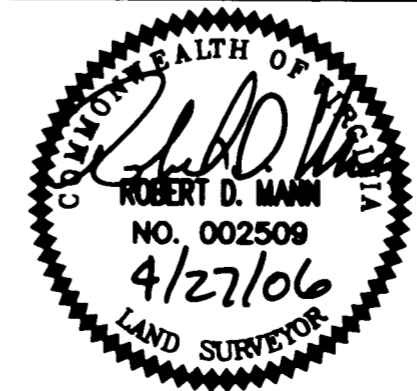
UNITS	
COMMON ELEMENT	
LIMITED COMMON ELEMENT	

Large/Small Plat(s) Recorded  
herewith as # 060013904



5248 Olde Towne Road, Suite 1  
Williamsburg, Virginia 23188  
(757) 253-0040  
Fax (757) 220-8994

EXHIBIT B  
PLAT OF CONDOMINIUM  
**NEW TOWN CENTER STREET CONDOMINIUMS**  
PHASE 3  
BUILDING "B"  
UNIT B1  
BERKELEY DISTRICT JAMES CITY COUNTY VIRGINIA



No.	DATE	REVISION / COMMENT / NOTE	BY
		City of Williamsburg & County of James City Circuit Court: This PLAT was recorded on <u>14 June 2006</u> at <u>10:51</u> AM/PM, P.B. <u>—</u> PG. <u>—</u> DOCUMENT # <u>060013904</u> BETSY B. WOOLRIDGE, CLERK <u>Betsy B. Woolridge</u> Clerk	

Designed <b>AES</b>	Drawn <b>JFS</b>
Scale <b>1"=20'</b>	Date <b>4/27/06</b>
Project No. <b>6632-E-10-3</b>	
Drawing No. <b>2 OF 2</b>	

S:\data\6632-E-10-3\Bldg Mixed Use Bldgs\dwg\plans\CONDOMINIUM\Phase 3 Bldg B\p01.dwg, 5/17/2006 10:52:27 AM