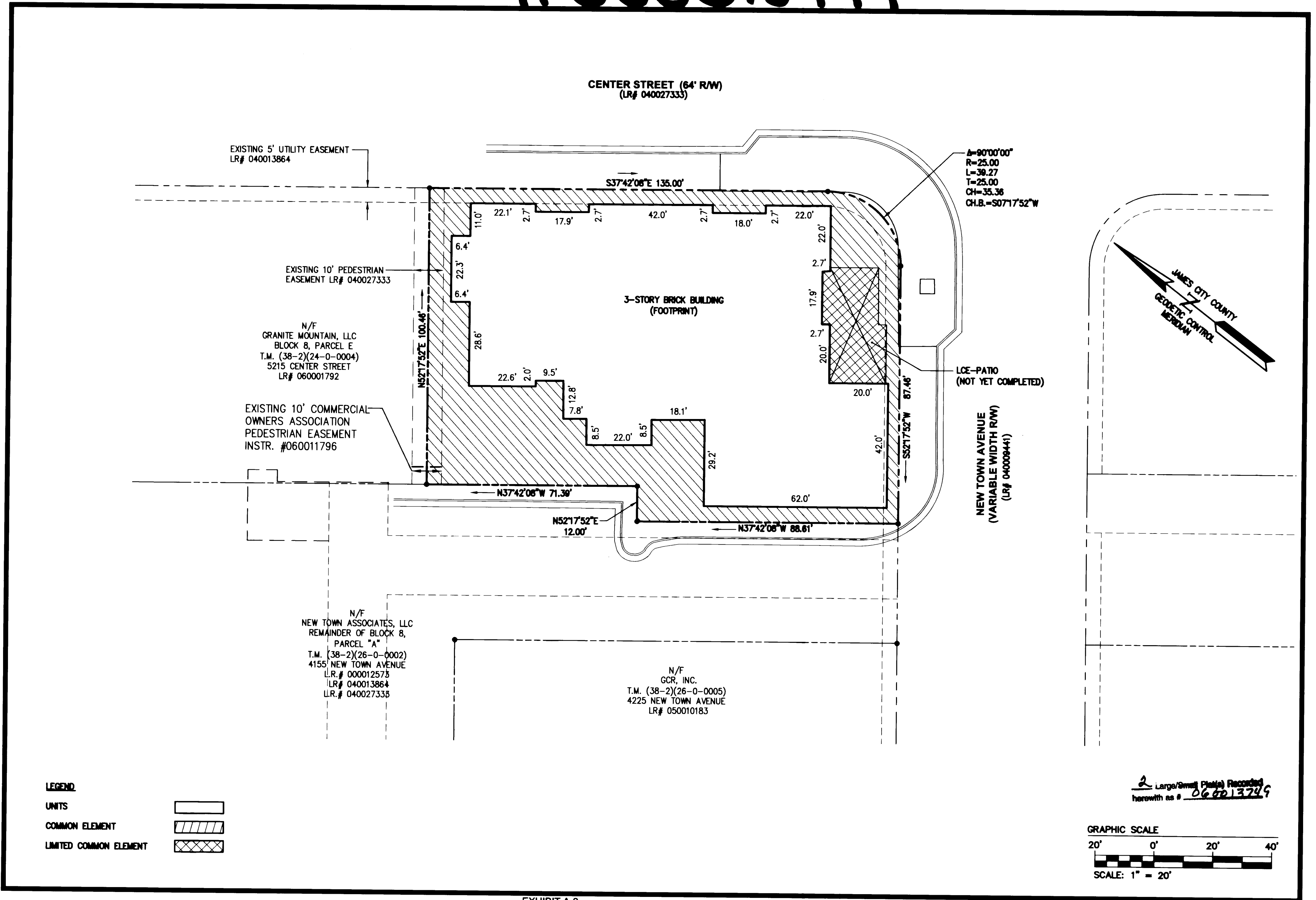


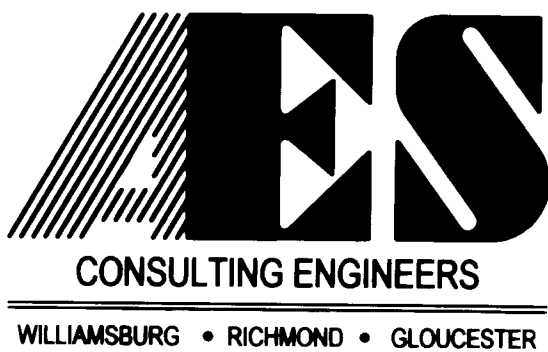
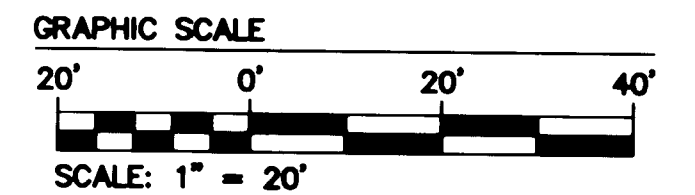
# #060013749



**LEGEND**

- UNITS
- COMMON ELEMENT
- LIMITED COMMON ELEMENT

2 Large/Small Plates Recorded herewith as # 060013749

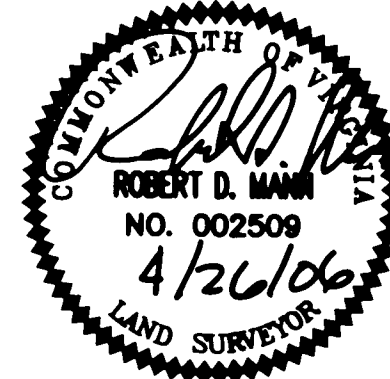


5248 Olde Towne Road, Suite 1  
Williamsburg, Virginia 23188  
(757) 253-0040  
Fax (757) 220-8994

EXHIBIT A-2  
PLAT OF CONDOMINIUM

## WEG BUILDING, A CONDOMINIUM

BERKELEY DISTRICT      JAMES CITY COUNTY      VIRGINIA



No.	DATE	REVISION / COMMENT / NOTE	BY

City of Williamsburg & County of James City  
Circuit Court: This PLAT was recorded on  
at 3:28 AM PM, PB - PG -  
DOCUMENT # 060013749  
BETSY B. WOOLRIDGE, CLERK  
*Betsy B. Woolridge* Clerk

Designed AES	Drawn EAW
Scale 1"=20'	Date 4/26/08
Project No. 6632-E12-4	
Drawing No. 2 OF 2	