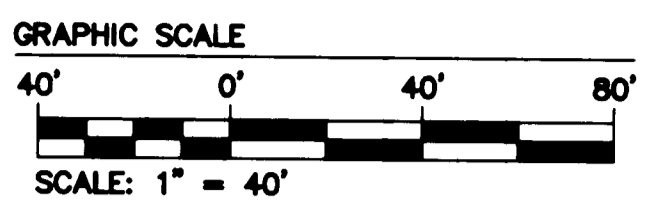
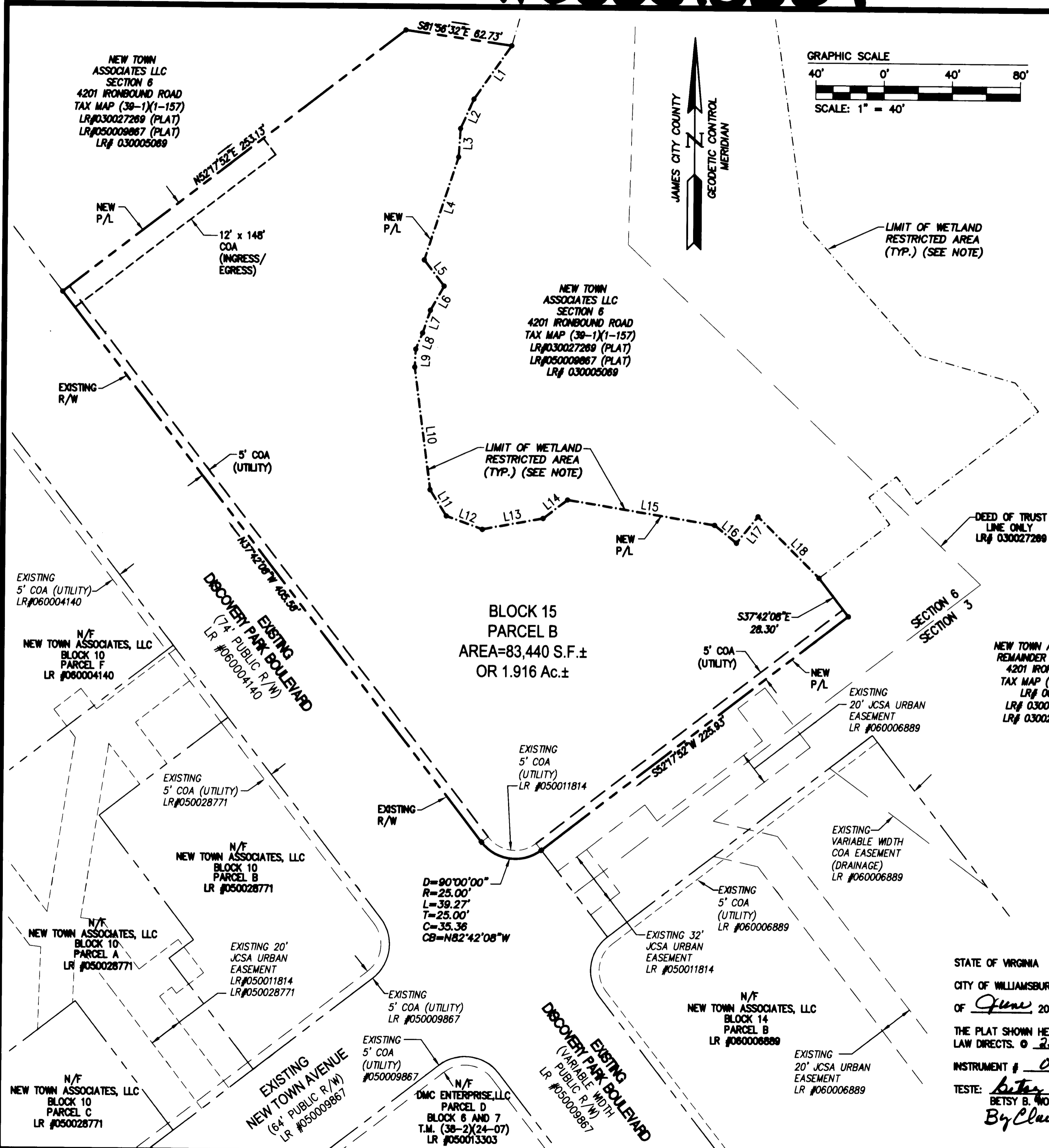


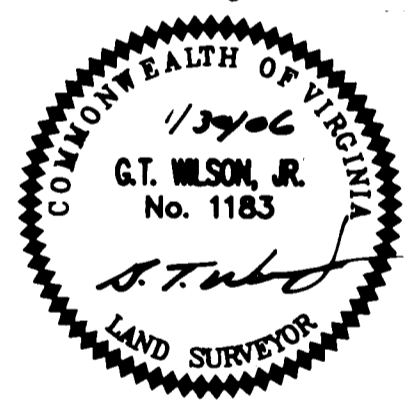
#060013509



LINE TABLE		
LINE	LENGTH	BEARING
L1	38.44'	S34°54'05"W
L2	18.96'	S23°58'29"W
L3	16.71'	S03°25'46"W
L4	63.56'	S18°02'38"W
L5	19.22'	S37°42'08"E
L6	16.31'	S29°12'55"W
L7	14.13'	S18°25'13"W
L8	10.34'	S22°23'17"W
L9	10.52'	S02°53'08"W
L10	72.36'	S07°31'50"E
L11	18.14'	S32°02'31"E
L12	22.49'	S70°06'02"E
L13	36.21'	N79°30'18"E
L14	18.00'	N52°17'52"E
L15	87.34'	S80°35'09"E
L16	16.53'	S51°14'53"E
L17	20.00'	N38°43'49"E
L18	50.75'	S45°12'06"E

NOTE:
THE LIMIT OF THE WETLAND RESTRICTED AREA IS SHOWN PER PLAT BY AES CONSULTING ENGINEERS TITLED "EXHIBIT A" PLAT SHOWING WETLAND RESTRICTED AREAS PREPARED FOR NEW TOWN ASSOCIATES DATED SEPTEMBER 12, 2005.

City of Williamsburg & County of James City Circuit Court. This PLAT was recorded on 12 June 2006 at 2:54 AM/PM, PG. 1 DOCUMENT # 060013509 BETSY B. WOOLRIDGE, CLERK
Betsy B. Woolridge Clerk



NEW TOWN ASSOCIATES, LLC
REMAINDER OF SECTION 3
4201 IRONBOUND ROAD
TAX MAP (39-1)(1-157)
LR# 000012573
LR# 030005089 (PLAT)
LR# 030027289 (PLAT)

NOTE:
SEE INSTRUMENT #050010506 AND INSTRUMENT #050010508 FOR A FURTHER DESCRIPTION OF THE EASEMENTS.
NOTE:
COA - COMMERCIAL OWNERS ASSOCIATION EASEMENT (NEW TOWN COMMERCIAL ASSOCIATION)

STATE OF VIRGINIA
CITY OF WILLIAMSBURG & COUNTY OF JAMES CITY CIRCUIT COURT. THIS 12 DAY OF June 2006
THE PLAT SHOWN HEREON WAS PRESENTED AND ADMITTED TO THE RECORD AS THE LAW DIRECTS. @ 2:54 AM/PM
INSTRUMENT # 060013509
TESTE: *Betsy B. Woolridge*
BETSY B. WOOLRIDGE, CLERK
By Claudia H. Bickelitz, Dep. Clerk

NO.	DATE	REVISION / COMMENT / NOTE	JFS	BY
1	1/3/29/06			

5248 Olde Towne Road, Suite 1
Williamsburg, Virginia 23188
(757) 253-0040
Fax (757) 220-8994



PLAT OF SUBDIVISION
BLOCK 15 PARCEL B
BEING A PORTION OF SECTION 6
NEW TOWN
OWNED BY NEW TOWN ASSOCIATES, LLC
BERKELEY DISTRICT COUNTY OF JAMES CITY VIRGINIA

Designed AES	Drawn JFS
Scale 1"=40'	Date 1/30/06
Project No. 6632-S6-15	
Drawing No. 2 OF 2	