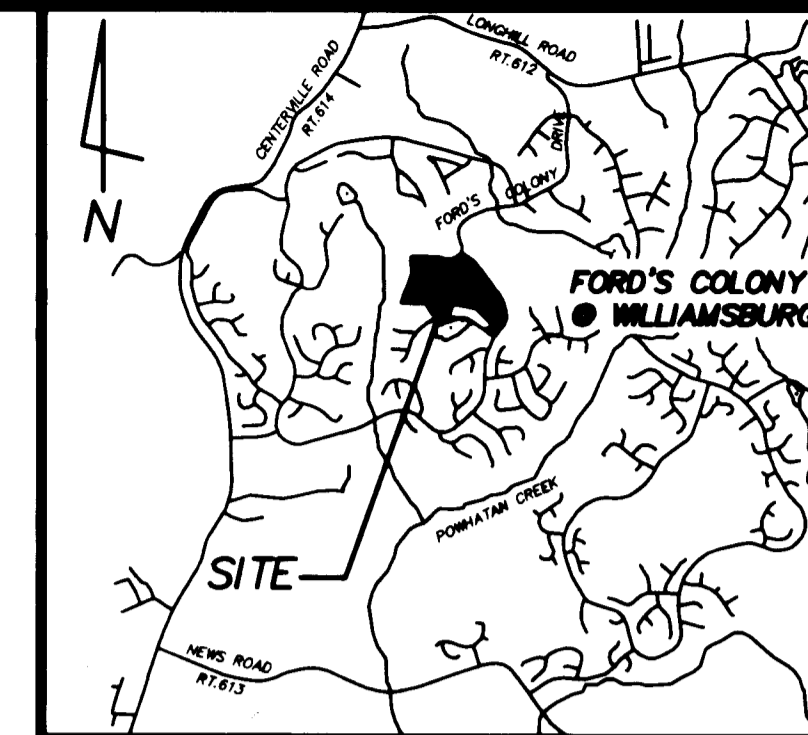


# #060011787

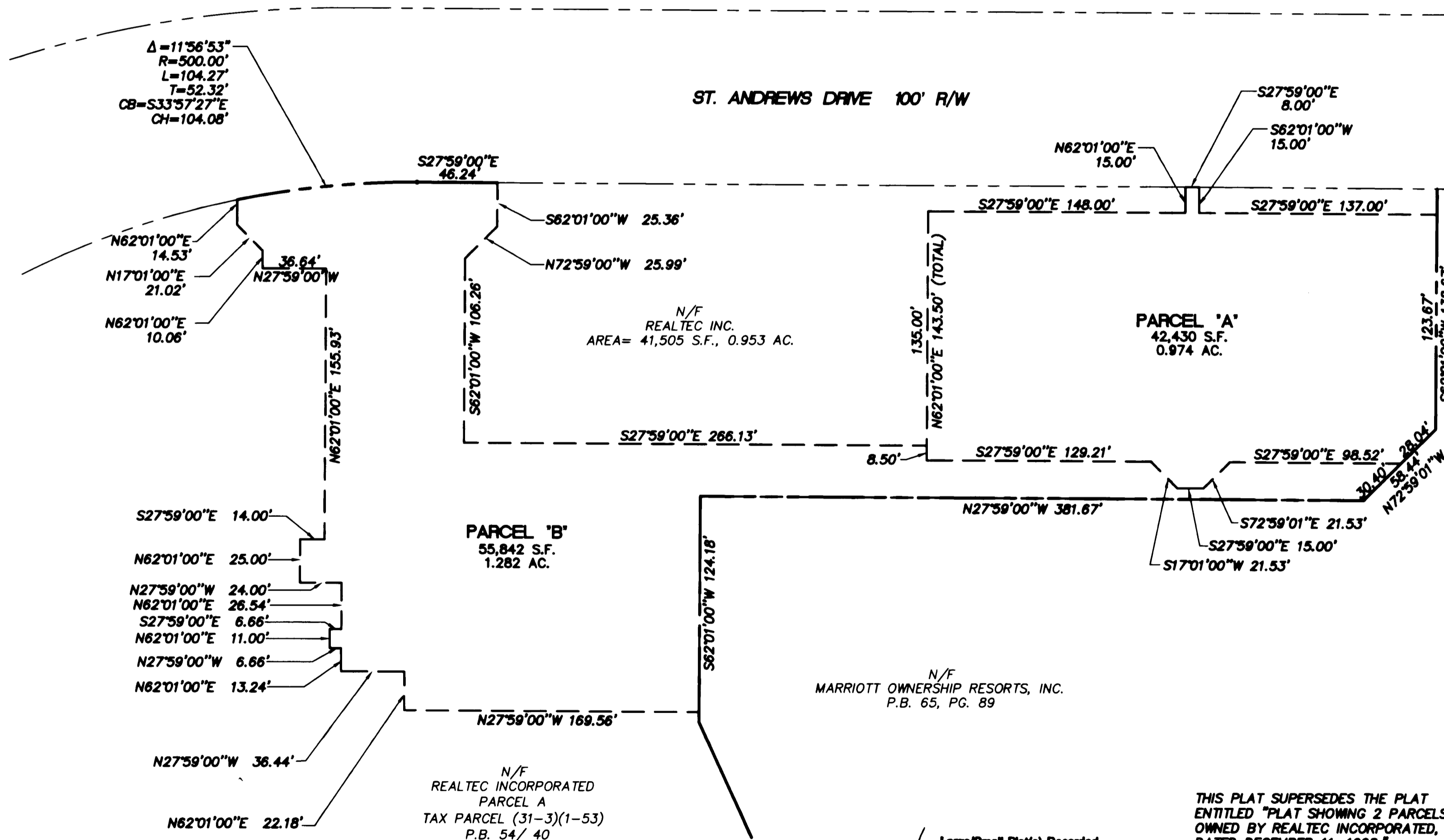
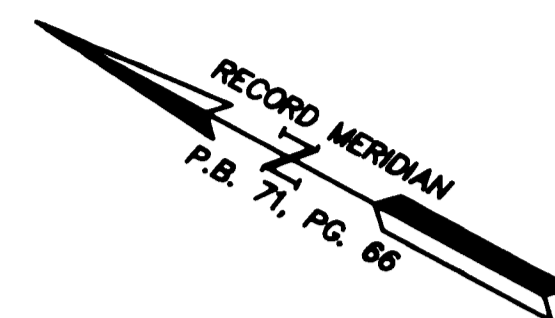
**PARCEL AREAS**

PARCEL 'A'	42,430 S.F.±	0.974 AC.±
PARCEL 'B'	55,842 S.F.±	1.282 AC.±
TOTAL AREA-	98,272 S.F.±	2.256 AC.±

N/F  
MARRIOTT'S MANOR CLUB AT FORD'S COLONY  
MARRIOTT OWNERSHIP RESORTS, INC.  
P.B. 53/27  
PB 57/42  
PB 57/43-51

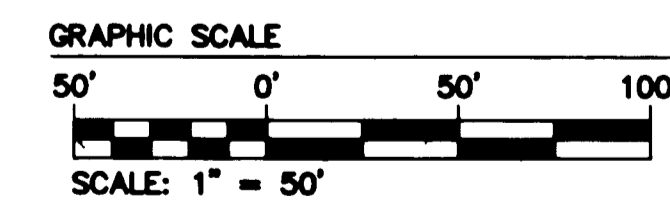


LOCATION MAP



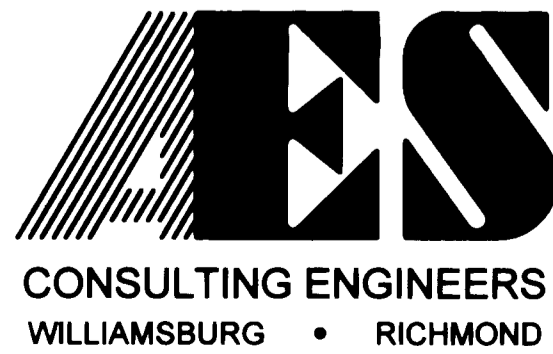
City of Williamsburg & County of James City  
Circuit Court. This PLAT was recorded on  
May 18, 2006  
at 1:30 AM/PM, PB 71 PG 66  
DOCUMENT # 060011787  
BETSY B. WOOLDRIDGE, CLERK  
*Betsy B. Wooldrige* Clerk

- REFERENCES: PB 54/40  
PB 40/63  
PB 46/79  
PB 54/40  
PB 44/36



THIS PLAT SUPERSEDES THE PLAT ENTITLED "PLAT SHOWING 2 PARCELS OWNED BY REALTEC INCORPORATED, DATED DECEMBER 11, 1998."

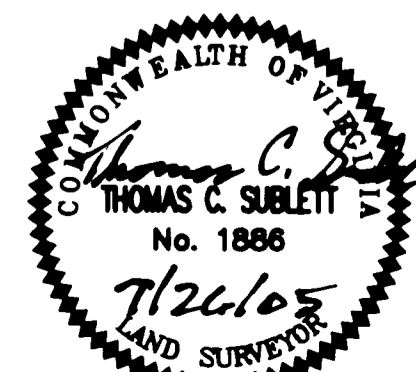
Large/Small Plat(s) Recorded herewith as # 060011787



5248 Olde Towne Road, Suite 1  
Williamsburg, Virginia 23188  
(757) 253-0040  
Fax (757) 220-8994

**PLAT SHOWING 2 PARCELS OWNED BY REALTEC INCORPORATED**

POWHATAN DISTRICT      JAMES CITY COUNTY      VIRGINIA



No.	DATE	REVISION / COMMENT / NOTE	BY

Designed CBR	Drawn DLD
Scale 1"=50'	Date 7/26/05
Project No. 7739	
Drawing No. 1 OF 1	