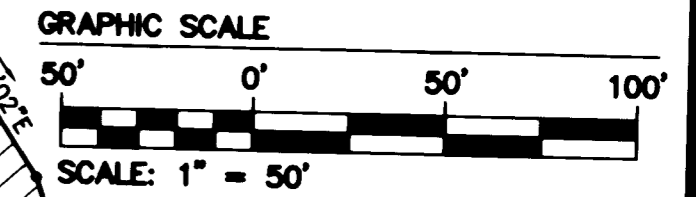


06001192

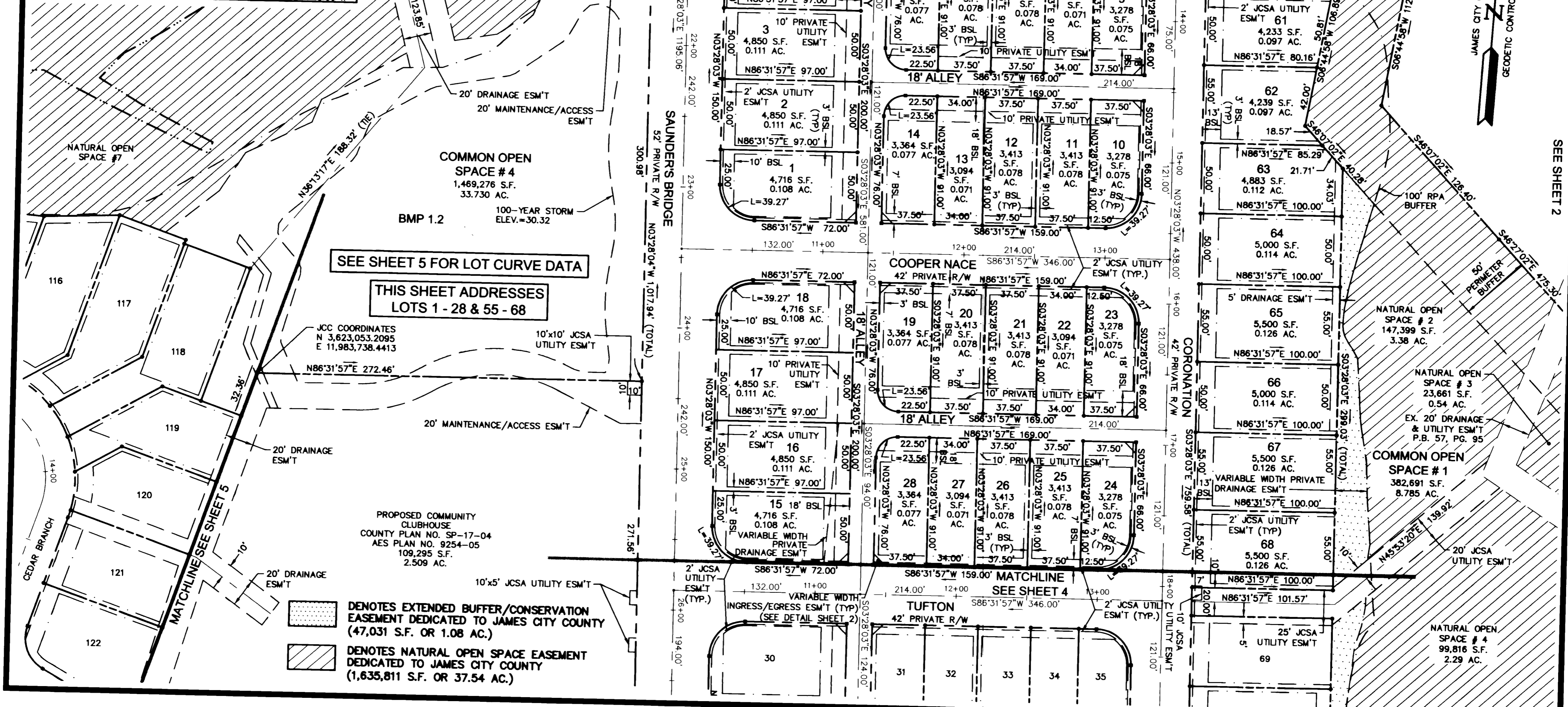
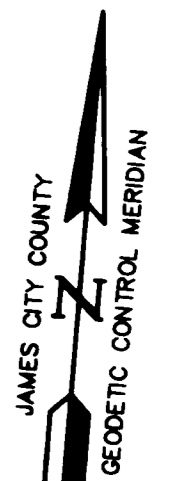
CURVE	DELTA	RADIUS	ARC	TANGENT	CHORD	CHORD BEARING
C1	89°13'14"	25.00	38.93	24.66	35.11	S28°32'57"W
C2	19°41'36"	443.00	152.27	76.89	151.52	S25°54'28"E
C3	32°17'13"	356.00	200.61	103.05	197.97	S19°36'40"E
C4	90°00'00"	67.00	105.23	67.00	94.75	S48°28'03"E
C5	31°09'03"	279.00	151.69	77.77	149.83	S19°02'34"E
C6	81°39'32"	25.00	35.63	21.60	32.69	N76°12'17"W
C7	23°33'55"	201.00	82.67	41.93	82.09	S74°45'00"W
C8	24°28'33"	159.00	67.92	34.49	67.41	S74°17'41"W
C9	95°55'28"	25.00	41.85	27.73	37.14	S14°05'40"W
C10	30°24'01"	321.00	170.32	87.21	168.33	N18°40'03"W
C11	90°00'00"	103.00	161.78	103.00	145.66	N48°28'03"W
C12	38°18'23"	321.00	214.61	111.49	210.64	N74°18'52"W
C13	19°08'20"	779.00	260.23	131.33	259.01	N64°43'50"W
C14	6°50'36"	1521.00	181.66	90.94	181.56	N70°52'42"W
C15	90°00'00"	10.00	15.71	10.00	14.14	N67°32'36"E
C16	3°12'11"	1479.00	82.68	41.35	82.68	S69°03'29"E
C17	87°33'44"	81.00	123.78	77.62	112.09	N61°55'08"E
C18	90°00'00"	81.00	127.22	81.00	114.55	S29°18'00"E
C19	9°08'51"	821.00	130.60	65.44	130.46	S59°43'06"E
C20	38°18'23"	279.00	186.53	96.90	183.08	S74°18'52"E
C21	90°00'00"	97.00	152.37	97.00	137.18	N41°31'57"E
C22	90°00'00"	39.00	61.26	39.00	55.15	N29°18'00"W
C23	93°44'44"	25.00	40.90	26.69	36.49	N62°34'22"E
C24	3°44'44"	821.00	53.67	26.84	53.66	N72°25'38"W
C25	92°28'16"	25.35	40.89	26.45	36.60	N28°04'52"W
C26	87°33'44"	39.00	59.60	37.37	53.97	N61°55'08"E
C27	90°00'00"	97.00	152.37	97.00	137.18	N41°31'57"W
C28	90°00'00"	103.00	161.79	103.00	145.66	N48°28'03"W
C29	23°33'55"	159.00	65.40	33.17	64.94	S74°45'00"W

THE CONTRACTOR IS TO PLACE AN RPA BUFFER SIGN ON LOTS 55-56, 58-59 & 60. THE STANDARD RPA BUFFER SIGN IS TO BE LOCATED AT THE LIMITS OF THE BUFFER AT THE INTERSECTION OF BUFFER AND LOT LINES.



N/F POWHATAN ASSOCIATES
T.M. (38-3)(1-19)
D.B. 444, PG. 301
D.B. 353, PG. 62
D.B. 251, PG. 486
P.B. 51, PG. 19

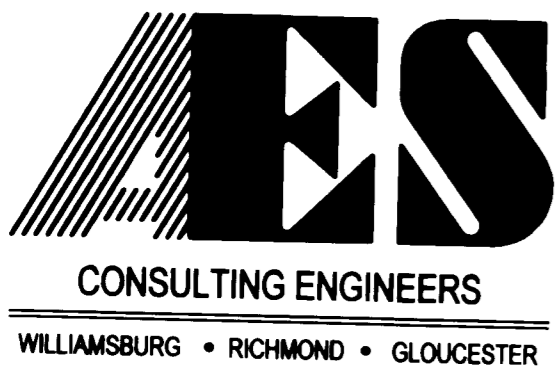
JCC COORDINATES
N 3,623,307.4109
E 11,984,516.2797



SEE SHEET 5 FOR LOT CURVE DATA

THIS SHEET ADDRESSES LOTS 1 - 28 & 55 - 68

DENOTES EXTENDED BUFFER/CONSERVATION EASEMENT DEDICATED TO JAMES CITY COUNTY (47,031 S.F. OR 1.08 AC.)
 DENOTES NATURAL OPEN SPACE EASEMENT DEDICATED TO JAMES CITY COUNTY (1,635,811 S.F. OR 37.54 AC.)



5 Large/Small Plots Recorded
herewith as # 06001192
2548 Olde Towne Road, Suite 1
Williamsburg, Virginia 23188
(757) 253-0040
Fax (757) 220-8994

PLAT OF SUBDIVISION
THE SETTLEMENT AT POWHATAN CREEK
PHASE I
LOTS 1 - 122
OWNED BY: MONTICELLO WOODS ACTIVE ADULT, LLC
BERKELEY DISTRICT JAMES CITY COUNTY VIRGINIA



No.	DATE	REVISION / COMMENT / NOTE	AWT	GTW
2	2/9/06	REVISED PER J.C.C. COMMENT LETTER DATED 2/8/06	AWT	GTW
1	1/3/06	REVISED PER J.C.C. COMMENT LETTER DATED 1/9/06	AWT	GTW

City of Williamsburg & County of James City
Circuit Court: This PLAT was recorded on
5-12-2006
at 2:34 PM, PG. 1
DOCUMENT # 06001192
BETSY B. WOOLRIDGE, CLERK

Designed AES	Drawn AWT
Scale 1"=50'	Date 12/5/05
Project No. 9254-2	
Drawing No. 3 of 5	

S:\Jobs\9254-02-Hiden_Subdivision\dwg\Plats\9254-02S.dwg, 3/2/2006 8:31:21 AM