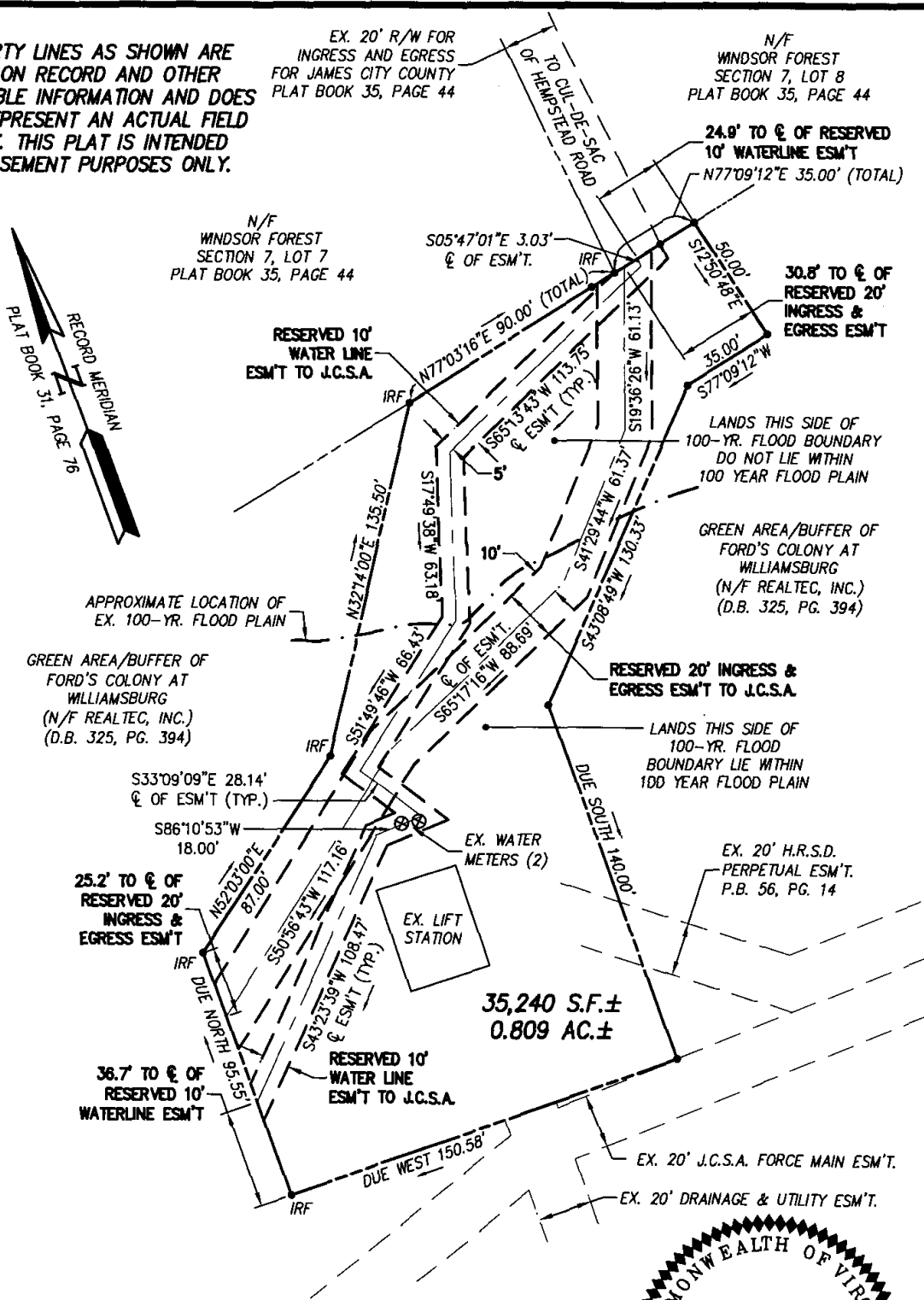


EXHIBIT "A"

NOTE:
PROPERTY LINES AS SHOWN ARE
BASED ON RECORD AND OTHER
AVAILABLE INFORMATION AND DOES
NOT REPRESENT AN ACTUAL FIELD
SURVEY. THIS PLAT IS INTENDED
FOR EASEMENT PURPOSES ONLY.



GREEN AREA/BUFFER OF
FORD'S COLONY AT
WILLIAMSBURG
(N/F REALTEC, INC.)
(D.B. 325, PG. 394)

GREEN AREA/BUFFER OF
FORD'S COLONY AT
WILLIAMSBURG
(N/F REALTEC, INC.)
(D.B. 325, PG. 394)

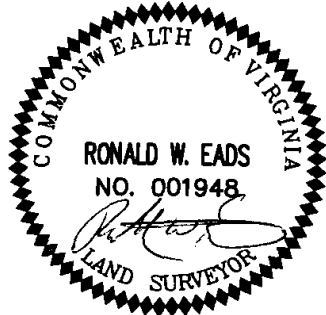
25.2' TO \ominus OF
RESERVED 20'
INGRESS &
EGRESS ESM'T

36.7' TO \ominus OF
RESERVED 10'
WATERLINE ESM'T

35,240 S.F. ±
0.809 AC. ±

AREA TABULATION

10' WATERLINE ESM'T. = 3,895 S.F. ± OR 0.089 AC.
20' INGRESS & EGRESS ESM'T. = 6,567 S.F. ± OR 0.151 AC.



5248 Olde Towne Road, Suite 1
Williamsburg, Virginia 23188
(757) 253-0040 Fax (757) 220-8994

**PLAT OF EASEMENT FOR CONVEYANCE TO JAMES CITY SERVICE AUTHORITY
ON A PARCEL CONTAINING 0.809 ACRES ±
LIFT STATION 1-5**

POWHATAN DISTRICT JAMES CITY COUNTY VIRGINIA

Scale: 1" = 50' Ref: P.B. 56, Pg. 14 ; P.B. 35, Pg. 44 Date: 4/3/06 Job No: 9322-27

Page 5 of 5