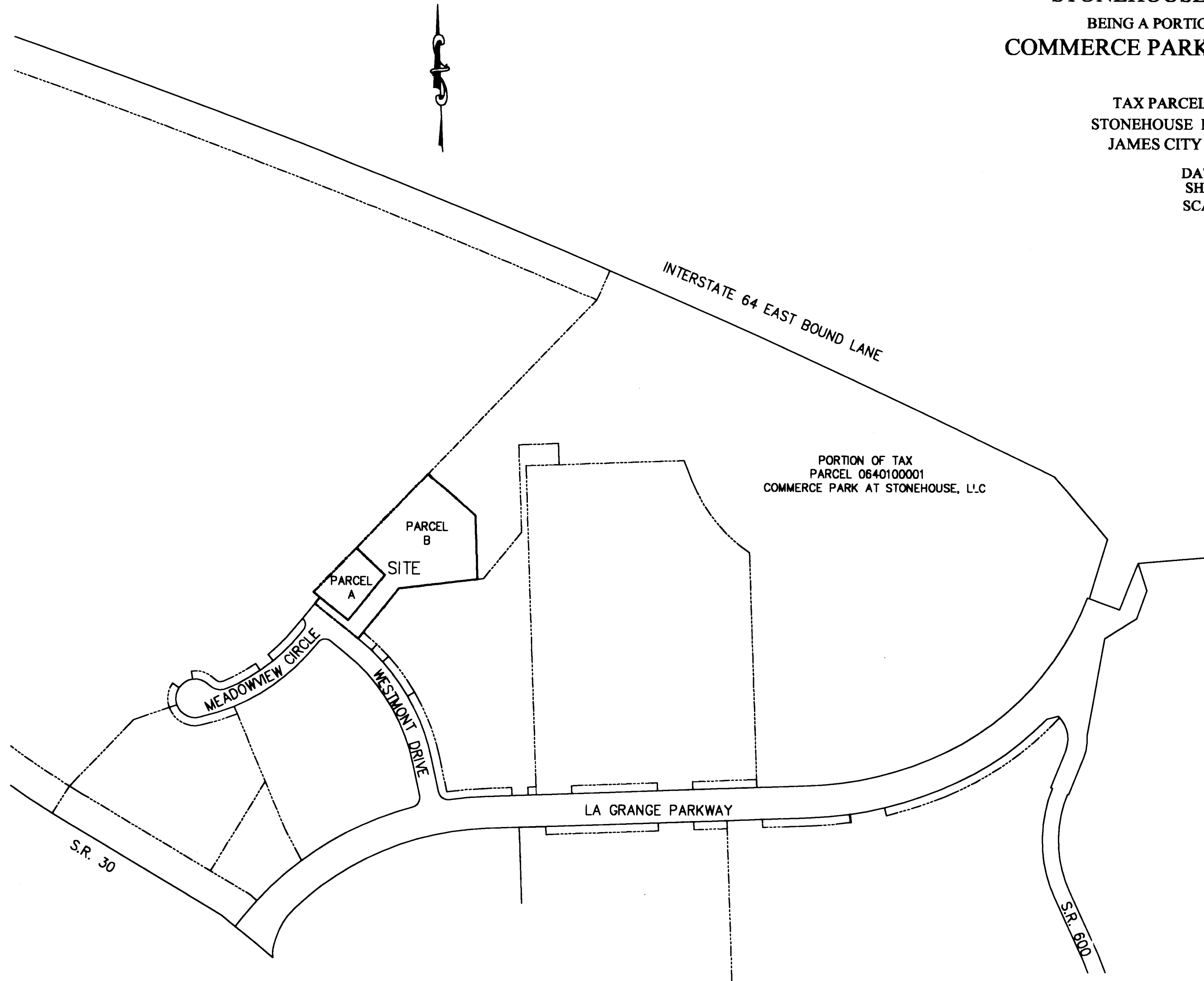


#060009197

SUBDIVISION PLAT
OF
PARCEL A & PARCEL B
SECTION D,
STONEHOUSE COMMERCE PARK
BEING A PORTION OF THE PROPERTY OF
COMMERCE PARK AT STONEHOUSE, LLC

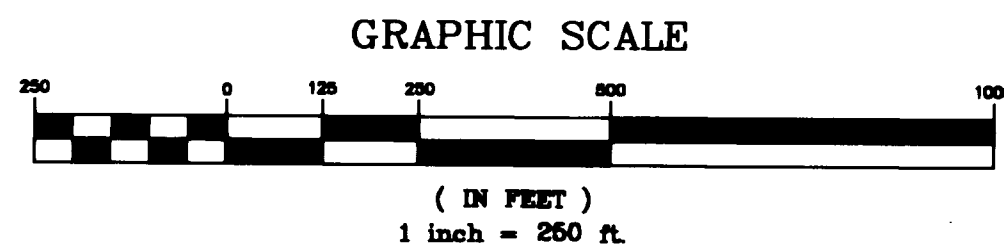
TAX PARCEL NUMBER 0640100001
STONEHOUSE MAGISTERIAL DISTRICT
JAMES CITY COUNTY, VIRGINIA

DATE: 02/16/06
SHEET 2 OF 3
SCALE: 1"=250'



City of Williamsburg & County of James City
Circuit Court: This PLAT was recorded on
at 3:20 PM, PB PG
DOCUMENT # 060009197
BETSY B. WOOLRIDGE, CLERK
Betsy B. Woolridge Clerk

3 Large/Small Plats Recorded
herewith as # 060009197



LANDMARK
ENGINEERS
Engineers • Planners • Surveyors
Landscape Architects • Environmental Consultants

4029 Ironbound Road
Suite 100
Williamsburg, VA 23188
Tel. (757) 253-2875
Fax (757) 229-0048
Email: lmdg@landmarkdg.com

5544 Greenwich Road
Suite 200
Virginia Beach, VA 23462
Tel. (757) 473-2000
Fax (757) 497-7933
Email: lmdg@landmarkdg.com

DRAWN BY: AST
CHKD. BY: PF
PROJ. NO.: 2002261-000.03
DWG. NO.: 16069W

2002261-000.03 STONEHOUSE WATER TANK PLAT (BASE.DWG)