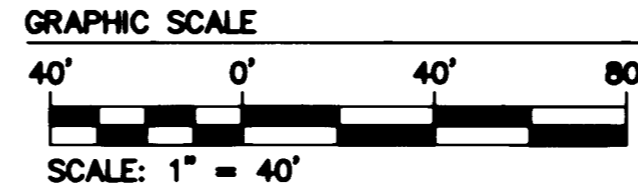
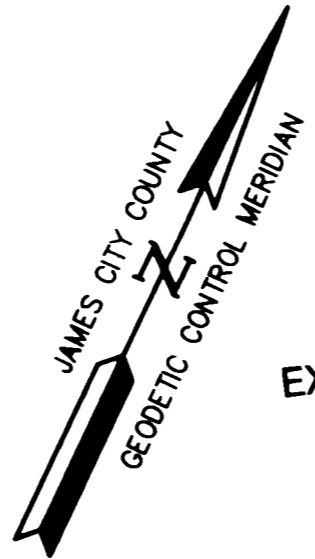


06 000 8711

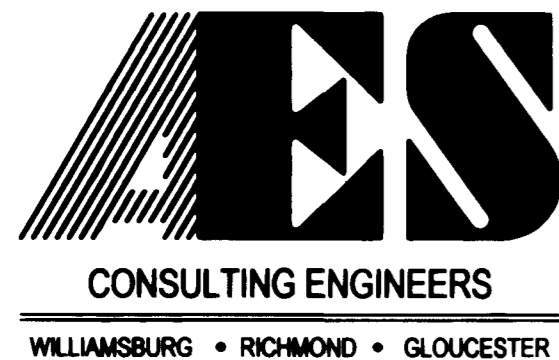
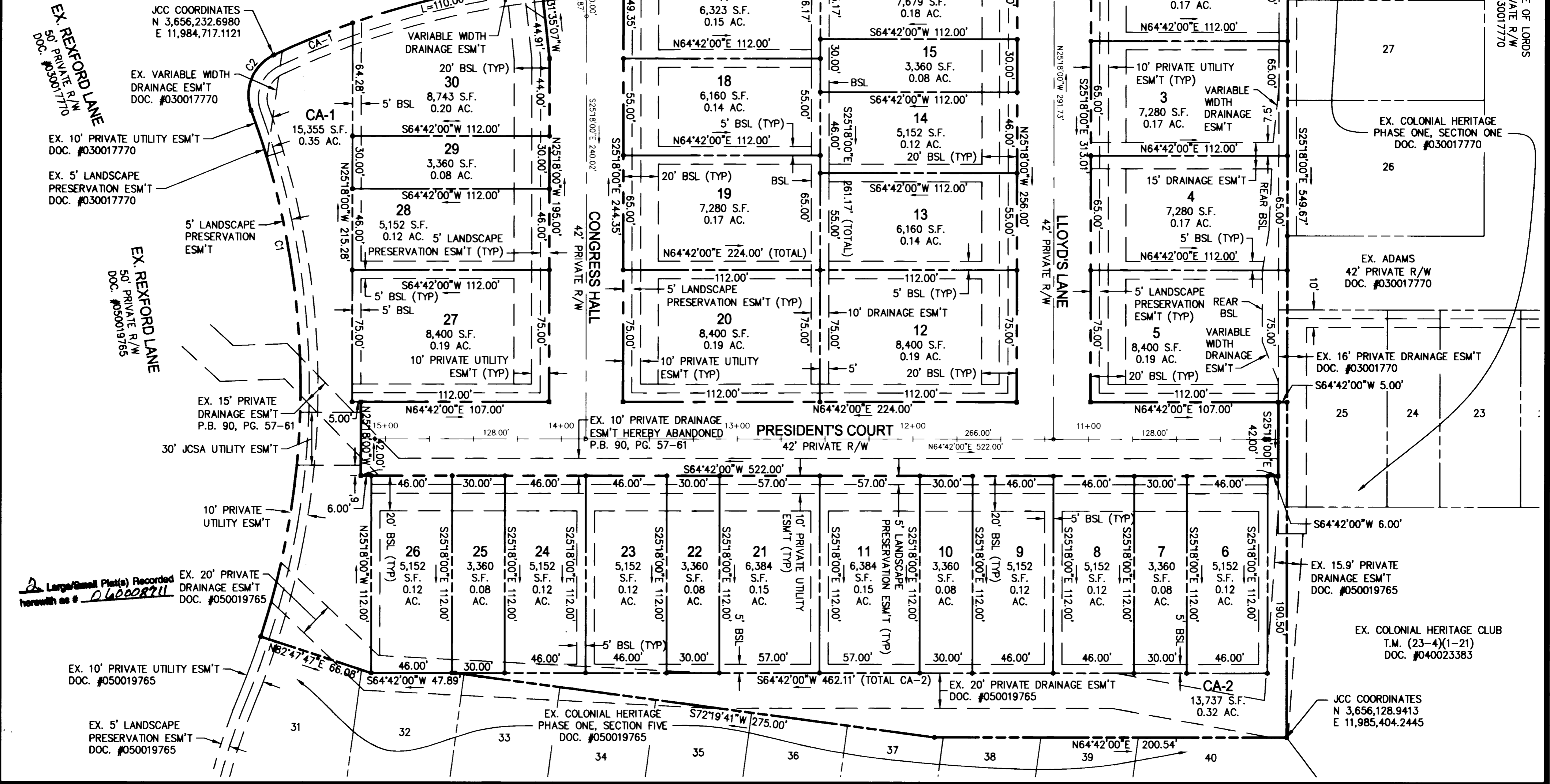
BOUNDARY CURVE TABLE						
CURVE	DELTA	RADIUS	ARC	TANGENT	CHORD	CHORD BEARING
C1	38°25'46"	454.49	304.83	158.40	299.15	N26°25'56"W
C2	85°15'09"	25.00	37.20	23.01	33.86	N03°01'14"W
C3	19°23'40"	483.00	163.49	82.54	162.71	N49°18'10"E
C4	16°42'00"	753.00	219.48	110.52	218.70	N50°39'00"E

LOT CURVE TABLE						
CURVE	DELTA	RADIUS	ARC	TANGENT	CHORD	CHORD BEARING
16	7°51'55"	753.00	103.37	51.77	103.29	N48°03'53"E
17	7°00'10"	753.00	92.03	46.07	91.97	N55°29'55"E
30	13°03'19"	483.00	110.06	55.27	109.82	N51°53'13"E
CA-1	5°45'14"	483.00	48.50	24.27	48.48	N42°28'57"E

RIGHT-OF-WAY CURVE TABLE						
CURVE	DELTA	RADIUS	ARC	TANGENT	CHORD	CHORD BEARING
R1	0°35'07"	483.00	4.93	2.47	4.93	N58°42'27"E
R2	1°49'55"	753.00	24.08	12.04	24.08	N43°12'58"E



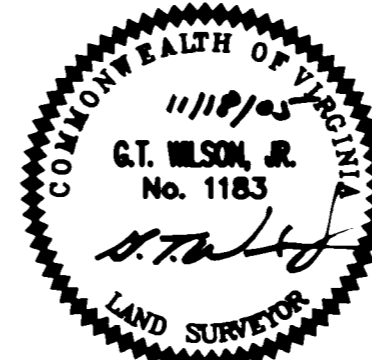
EX. 12' PUBLIC UTILITY ESM'T
DOC. #030017770



5248 Olde Towne Road, Suite 1
Williamsburg, Virginia 23188
(757) 253-0040
Fax (757) 220-8994

**PLAT OF SUBDIVISION
COLONIAL HERITAGE
PHASE I, SECTION 5
LOTS 1-30
PREPARED FOR COLONIAL HERITAGE LLC**

STONEHOUSE DISTRICT JAMES CITY COUNTY VIRGINIA



City of Williamsburg & County of James City Circuit Court: This PLAT was recorded on at 3:46 AM, PM, PB - PG - DOCUMENT # 06 000 8711 BETSY B. WOOLRIDGE, CLERK Clerk	Designed	Drawn	Project No. 8881-18 Drawing No. 2 of 2
	HWP	AWT	
	Scale 1"=40'	Date 11/18/05	
No.	DATE	REVISION / COMMENT / NOTE	BY

Designed	Drawn
HWP	AWT
Scale 1"=40'	Date 11/18/05
Project No. 8881-18	
Drawing No. 2 of 2	