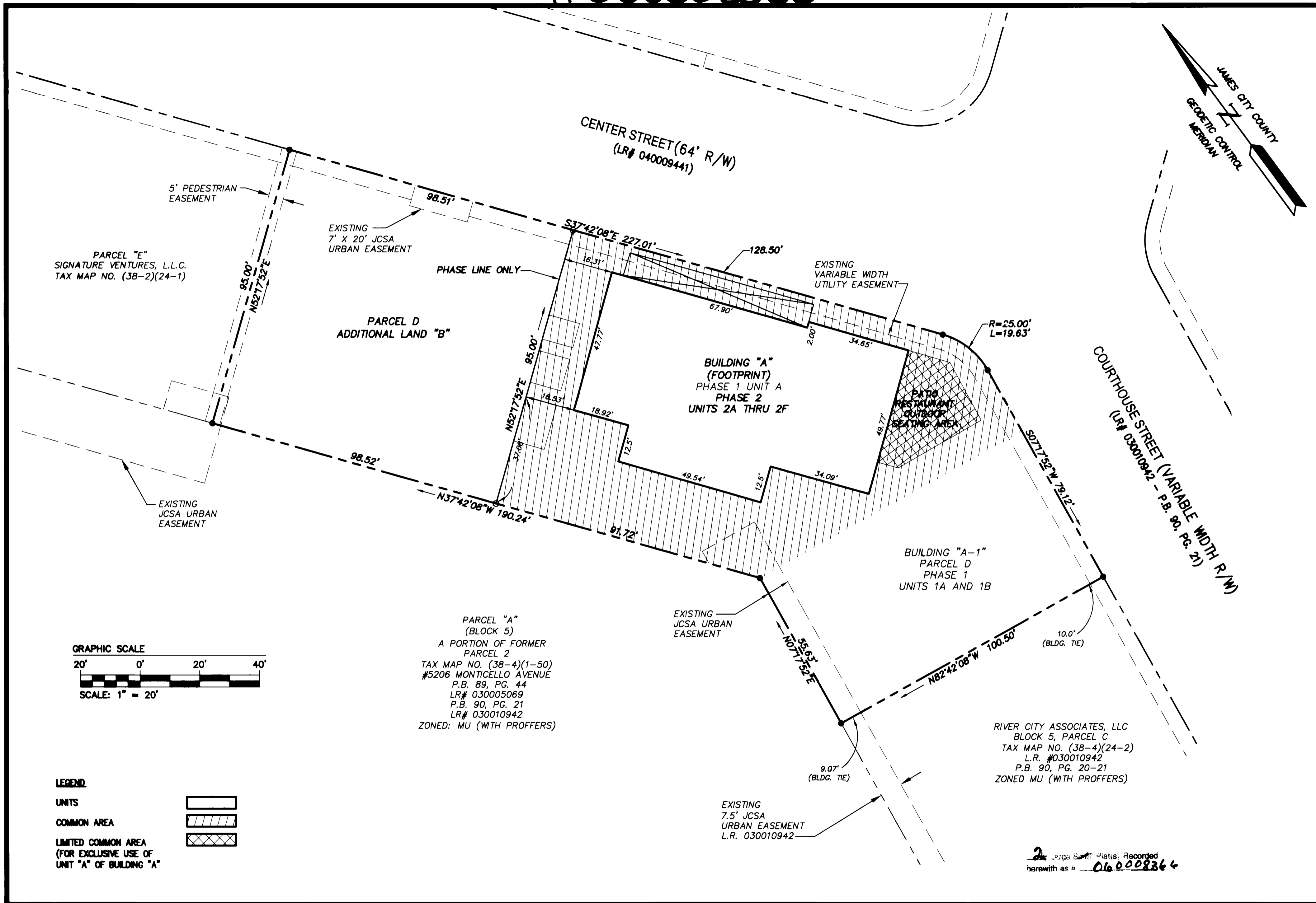
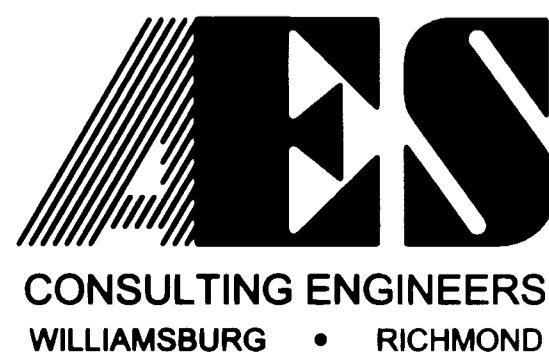


#060008366

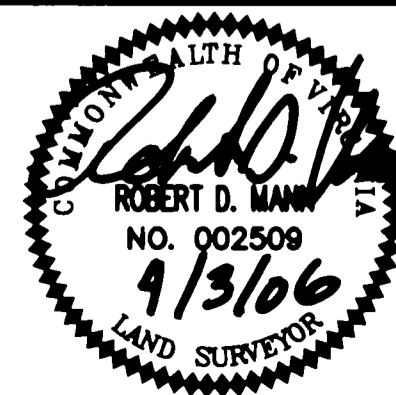


S:\Jobs\6632\1E10-3 Bldg Mixed Use Bldgs.dwg\Plats\CONDOMINIUM\Phase 2-Bldg A\6632E10CONDOPH2BLDGApo2.dwg, 4/14/2006 4:17:01 PM, EAW



5248 Olde Towne Road, Suite 1
Williamsburg, Virginia 23188
(757) 253-0040
Fax (757) 220-8994

EXHIBIT B
PLAT OF CONDOMINIUM
NEW TOWN CENTER STREET CONDOMINIUMS
PHASE 2
BUILDING "A"
UNITS 2A THRU 2F
BERKELEY DISTRICT JAMES CITY COUNTY VIRGINIA



No.	DATE	REVISION / COMMENT / NOTE	BY
		City of Williamsburg & County of James City Circuit Court, This PLAT was recorded on 11 April 2006 at 3:20 AM PM, PG. DOCUMENT # 060008366 Betsy B. Woolridge, CLERK	
		Betsy B. Woolridge Clerk	

Designed AES	Drawn JFS/eaw
Scale 1"=20'	Date 4/3/06
Project No. 6632-E-10-3	
Drawing No. 2 OF 2	