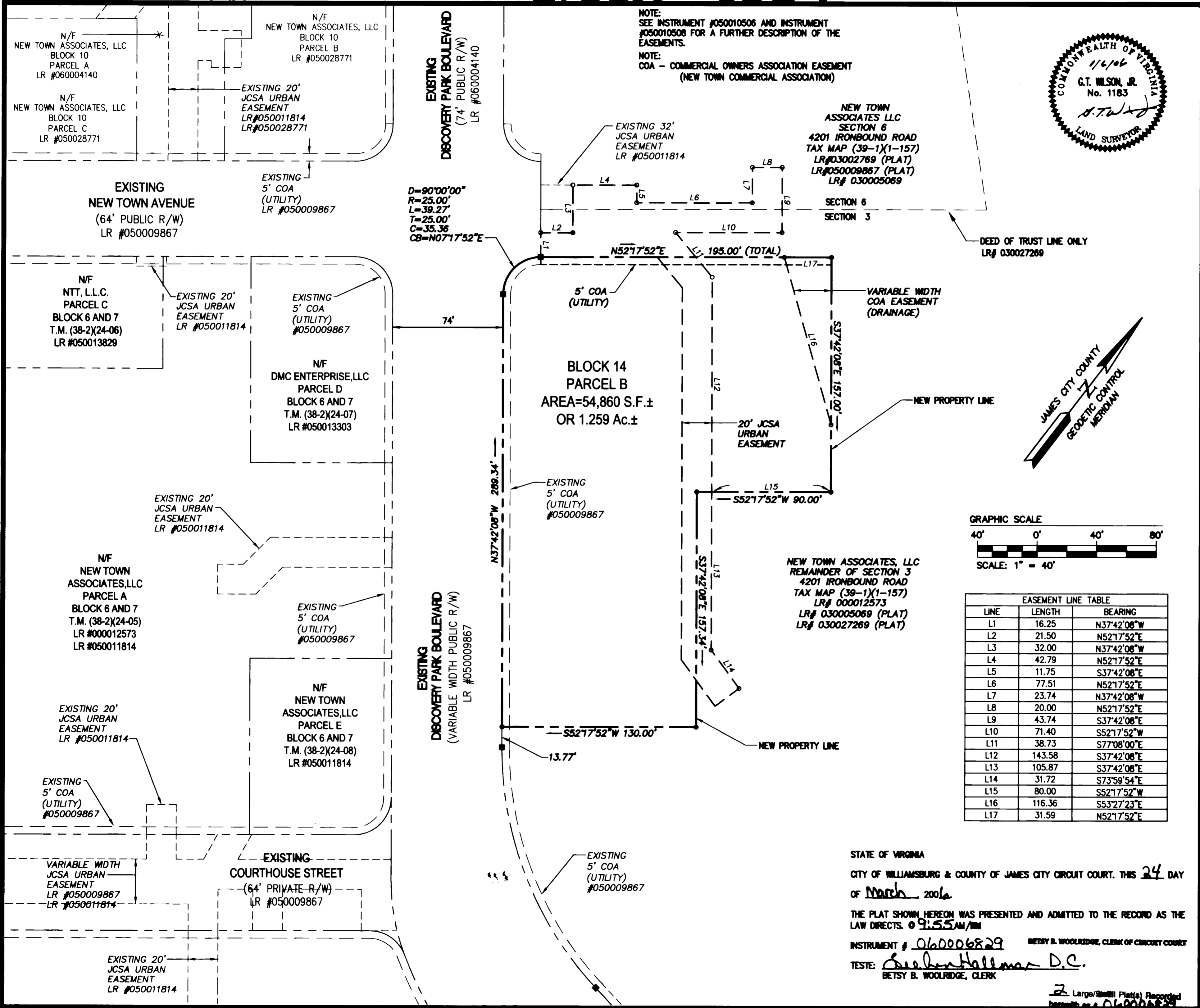
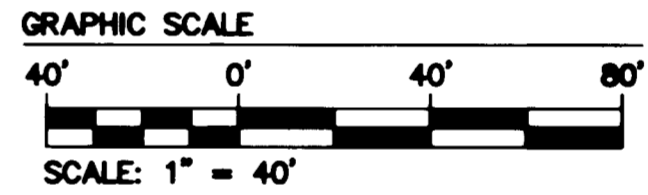
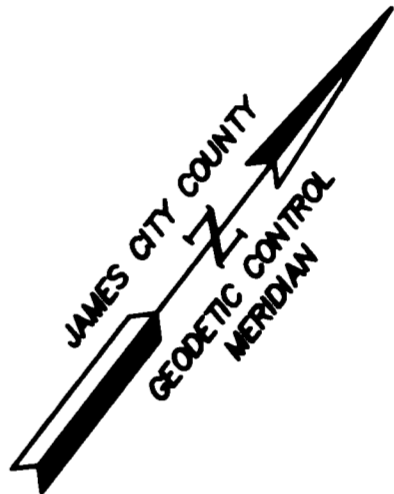


#060006829



NOTE:
SEE INSTRUMENT #050010506 AND INSTRUMENT #050010508 FOR A FURTHER DESCRIPTION OF THE EASEMENTS.

NOTE:
COA - COMMERCIAL OWNERS ASSOCIATION EASEMENT (NEW TOWN COMMERCIAL ASSOCIATION)



EASEMENT LINE TABLE		
LINE	LENGTH	BEARING
L1	16.25	N37°42'08"W
L2	21.50	N52°17'52"E
L3	32.00	N37°42'08"W
L4	42.79	N52°17'52"E
L5	11.75	S37°42'08"E
L6	77.51	N52°17'52"E
L7	23.74	N37°42'08"W
L8	20.00	N52°17'52"E
L9	43.74	S37°42'08"E
L10	71.40	S52°17'52"W
L11	38.73	S77°08'00"E
L12	143.58	S37°42'08"E
L13	105.87	S37°42'08"E
L14	31.72	S73°59'54"E
L15	80.00	S52°17'52"W
L16	116.36	S53°27'23"E
L17	31.59	N52°17'52"E

STATE OF VIRGINIA
CITY OF WILLIAMSBURG & COUNTY OF JAMES CITY CIRCUIT COURT. THIS 24 DAY OF March, 2006.

THE PLAT SHOWN HEREON WAS PRESENTED AND ADMITTED TO THE RECORD AS THE LAW DIRECTS. 09:55AM/11M

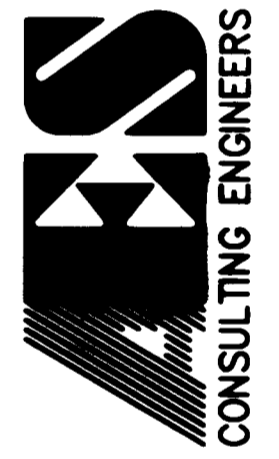
INSTRUMENT # 060006829 BETSY B. WOOLRIDGE, CLERK OF CIRCUIT COURT

TESTE: Betsy B. Woolridge D.C.
BETSY B. WOOLRIDGE, CLERK

2 Large/Small Plat(s) Recorded
Date of Recording: 06/08/06

No.	DATE	REVISION / COMMENT / NOTE	BY
2	3/8/06	REVISED PER JCSA COMMENTS	JFS
1	2/8/06	REVISED PER COUNTY COMMENTS	JFS

5248 Old Towne Road, Suite 1
Williamsburg, Virginia 23188
(757) 253-0040
Fax (757) 220-8994



PLAT OF SUBDIVISION
BLOCK 14 PARCEL B
BEING A PORTION OF SECTION THREE
NEW TOWN
OWNED BY NEW TOWN ASSOCIATES, LLC

BENEFICIAL DISTRICT COUNTY OF JAMES CITY VIRGINIA

Designed AES	Drawn JFS
Scale 1"=40'	Date 1/08/06
Project No. 6632-6-14	
Drawing No. 2 OF 2	

S:\Jobs\6632\66\14 - Block 14.dwg - 3/16/2006 2:33:35 PM