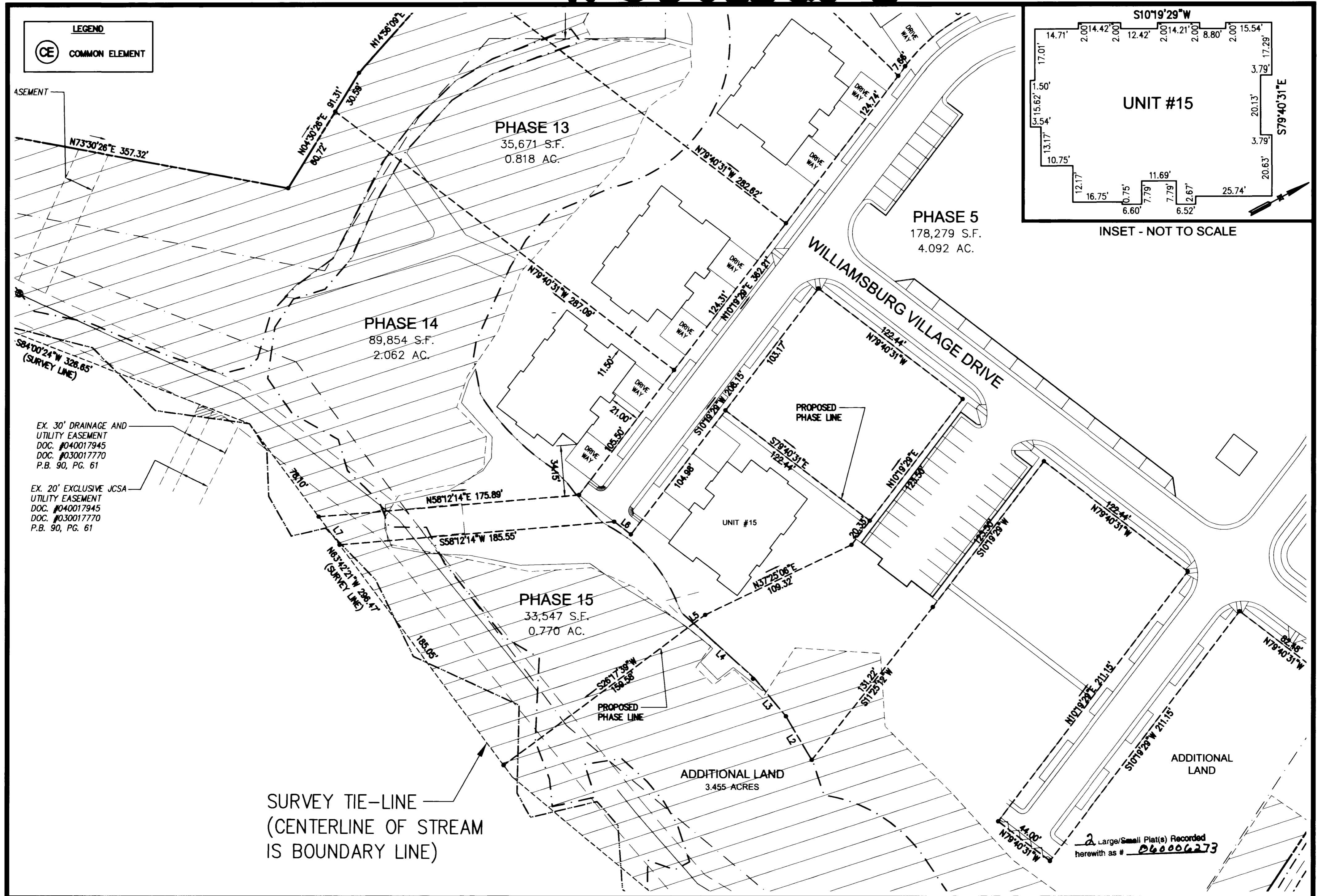
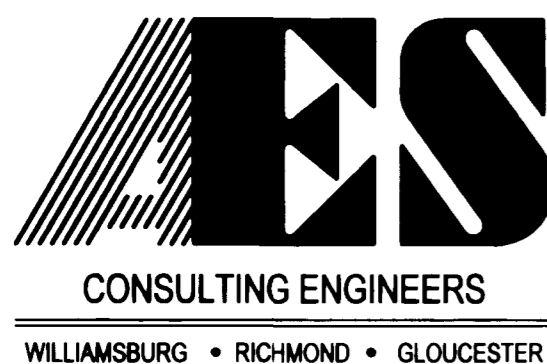


# # 06 0006273

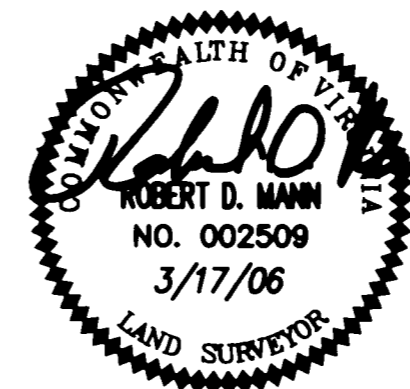


"EXHIBIT 1"



5248 Olde Towne Road, Suite 1  
 Williamsburg, Virginia 23188  
 (757) 253-0040  
 Fax (757) 220-8994

PLAT OF CONDOMINIUM  
**WILLIAMSBURG VILLAGE AT NORGE CONDOMINIUM**  
 PHASE 15, UNIT #15  
 STONEHOUSE DISTRICT COUNTY OF JAMES CITY VIRGINIA



No.	DATE	REVISION / COMMENT / NOTE	BY

City of Williamsburg & County of James City  
 Circuit Court: This PLAT was recorded on  
 at 11:26 AM on March 2006  
 DOCUMENT # 060006273  
 BETSY B. WOOLRIDGE, CLERK  
*Betsy B. Woolridge* Clerk

Designed VMB/JAG	Drawn AWT/eam
Scale 1"=40'	Date 3/17/06
Project No. 9286-2	
Drawing No. 2 of 2	