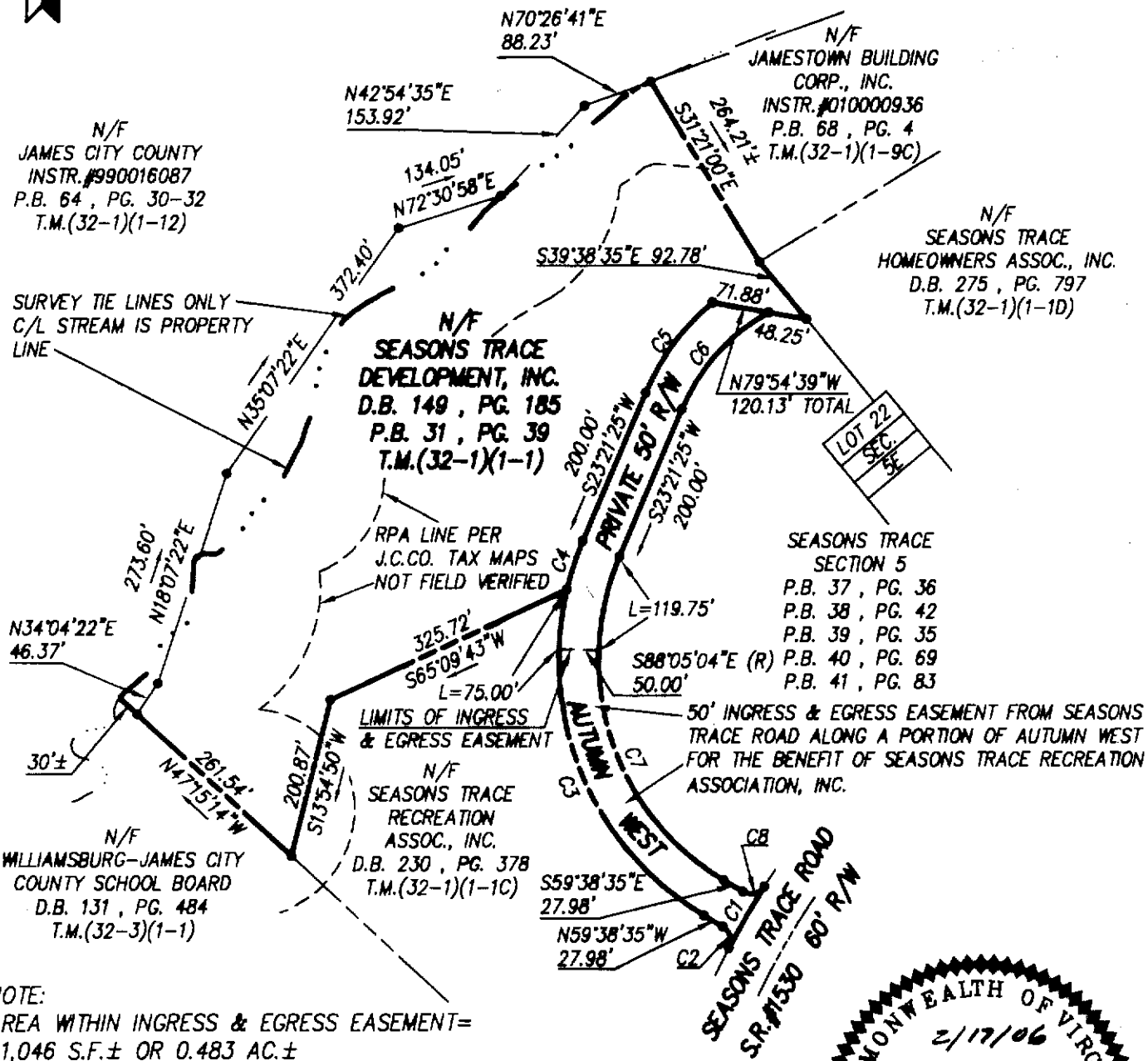


RECORD MERIDIAN
PLAT BOOK 31, PAGE 39

CURVE TABLE						
CURVE	DELTA	RADIUS	ARC	TANGENT	CHORD	CHORD BEARING
C1	04°59'19"	1014.00	88.29	44.17	88.26	S30°21'25"W
C2	87°30'21"	20.00	30.55	19.15	27.66	N15°53'25"W
C3	73°10'21"	370.00	472.53	274.65	441.06	N23°03'24"W
C4	09°49'39"	370.00	63.46	31.81	63.39	S18°26'35"W
C5	27°24'05"	295.00	141.08	71.92	139.74	S37°03'27"W
C6	38°25'27"	245.00	164.30	85.38	161.24	S42°34'08"W
C7	83°00'00"	320.00	463.56	283.11	424.08	S18°08'35"E
C8	87°30'21"	20.00	30.55	19.15	27.66	N76°36'14"E

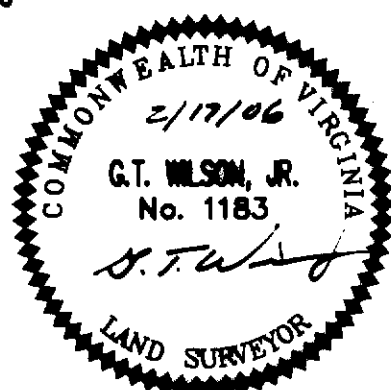
AREA TABULATION

T.M.(32-1)(1-1)	321,478 S.F.±	7.380 AC.± (TO SURVEY TIE LINES)
AUTUMN WEST	45,093 S.F.±	1.035 AC.±
TOTAL	366,571 S.F.±	8.415 AC.±



NOTE:
ACCESS TO SECTION 5 IS FROM SEASONS TRACE ROAD NOT AUTUMN WEST.

NOTE:
THIS PLAT IS BASED UPON RECORD AND OTHER AVAILABLE INFORMATION AND DOES NOT REPRESENT A CURRENT SURVEY IN THE FIELD.



CONSULTING ENGINEERS
WILLIAMSBURG • RICHMOND • GLOUCESTER

5248 Olde Towne Road, Suite 1
Williamsburg, Virginia 23188
(757) 253-0040 Fax (757) 220-8994

COMPOSITE PLAT
SHOWING TWO PARCELS CONTAINING 8.415 ACRES±
OWNED BY SEASONS TRACE DEVELOPMENT, INC.

POWhatan DISTRICT

JAMES CITY COUNTY

VIRGINIA

Scale: 1"=200'

Ref: PLAT BOOK 31, PAGE 39

Date: 2/17/2006

Job No: 9697