

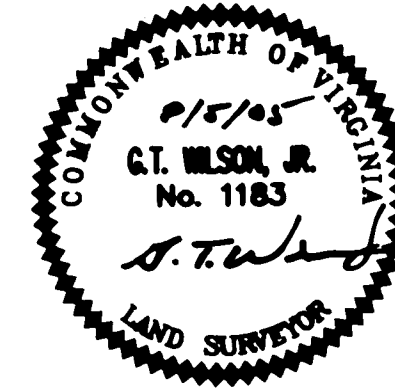
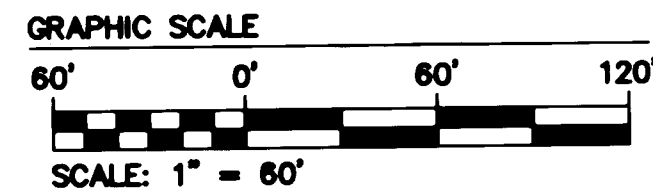
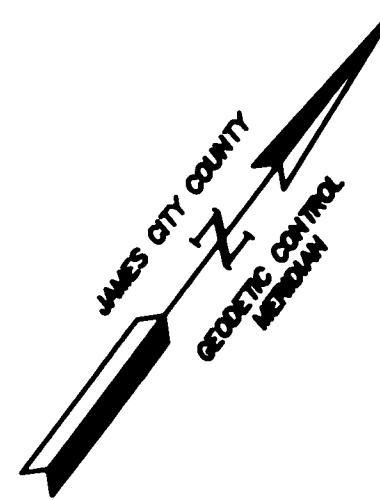
# #060004140

LINE	LENGTH	BEARING
L1	107.90'	N82°17'52"E
L2	31.54'	S07°42'08"E
L3	19.52'	S82°17'52"W
L4	78.49'	S07°42'08"E
L5	39.01'	N82°20'43"E
L6	20.00'	S07°42'08"E
L7	59.51'	S82°20'43"W
L8	98.48'	N07°42'08"W
L9	65.83'	S82°17'52"W
L10	23.00'	N52°17'52"E
L11	5.00'	S37°42'08"E
L12	18.00'	N52°17'52"E
L13	20.00'	S37°42'08"E
L14	17.39'	S52°17'52"W
L15	21.91'	S37°42'08"E
L16	20.00'	S52°17'52"W
L17	26.91'	N37°42'08"W
L18	3.61'	S52°17'52"W
L19	20.00'	N37°42'08"W
L20	48.52'	N01°49'26"E
L21	6.49'	N82°42'08"W
L22	88.99'	N37°42'08"W
L23	20.00'	N52°17'52"E
L24	79.49'	S37°42'08"E
L25	103.47'	N08°45'12"E
L26	20.71'	N37°42'07"W
L27	20.00'	N52°17'52"E
L28	15.00'	S37°42'07"E
L29	58.50'	N52°17'53"E
L30	45.01'	S52°17'53"W
L31	30.50'	S37°42'08"E
L32	20.00'	S52°17'54"W
L33	30.03'	N37°42'08"W
L34	103.43'	S08°45'12"W
L35	12.84'	S82°42'08"E
L36	35.89'	S37°42'08"E
L37	20.00'	S52°17'52"W
L38	27.41'	N37°42'08"W
L39	5.38'	N82°42'08"W
L40	30.10'	S01°48'28"W
L41	25.93'	S52°17'52"W
L42	20.00'	S37°42'08"E

NO.	DELTA	RADIUS	LENGTH	TANGENT	CHORD	CH. BEARING
C1	90°00'00"	25.00	39.27	25.00	35.36	S07°17'52"W
C2	90°00'00"	25.00	39.27	25.00	35.36	N82°42'08"W
C3	90°00'00"	25.00	39.27	25.00	35.36	N07°17'52"E
C4	90°00'00"	25.00	39.27	25.00	35.36	S82°42'08"E
C5	0°58'23"	532.00	9.19	4.59	9.19	N08°11'50"W
C6	5°23'53"	532.00	50.12	25.08	50.10	N11°23'27"W
C7	88°29'45"	25.00	38.61	24.35	34.89	S81°57'01"E
C8	8°43'34"	1537.00	234.08	117.27	233.86	N58°09'54"E
C9	82°11'49"	25.00	35.87	21.81	32.87	N21°25'47"E
C10	5°34'43"	532.00	51.80	25.92	51.78	N16°52'48"W
C11	11°57'59"	532.00	111.11	55.78	110.91	N13°41'08"W
C13	30°00'00"	78.00	41.36	21.17	40.89	N22°42'08"W
C14	80°00'00"	25.00	28.18	14.43	25.00	S82°17'52"W
C15	80°00'00"	25.00	28.18	14.43	25.00	S22°17'52"W
C16	1°07'30"	488.00	9.19	4.59	9.19	S08°15'53"E
C17	30°00'00"	25.00	13.09	6.70	12.94	N67°17'52"E
C18	32°28'11"	25.00	14.17	7.28	13.99	N38°03'18"E
C19	1°52'56"	733.00	24.08	12.04	24.08	N68°45'40"W
C20	23°31'22"	787.00	327.21	165.94	324.92	S55°58'27"E
C21	91°18'47"	25.00	39.84	25.58	35.78	S89°50'10"E
C22	3°08'17"	3170.89	173.68	86.85	173.64	N48°04'36"E
C25	3°24'45"	3098.89	184.44	92.25	184.41	S48°12'49"W
C26	88°38'21"	25.00	38.68	24.41	34.93	S00°11'16"W
C27	91°21'39"	25.00	39.86	25.60	35.77	N89°48'44"W
C28	19°13'23"	1037.00	347.92	175.61	346.29	S54°07'08"W
C29	9°55'43"	1463.00	253.52	127.08	253.20	N58°45'58"E
C30	89°30'15"	25.00	39.05	24.78	35.20	S08°02'50"W
C31	4°42'02"	488.00	38.40	19.21	38.39	S17°19'08"E
C32	96°36'03"	25.00	42.15	28.06	37.33	S87°58'09"E
C33	19°13'23"	983.00	323.09	163.08	321.58	N54°07'08"E
C34	88°28'32"	25.00	38.60	24.34	34.88	N00°16'11"E
C35	17°55'08"	733.00	228.24	115.56	228.31	N52°55'39"W
C36	32°28'11"	75.00	42.52	21.85	41.96	S38°03'18"W
C37	30°00'00"	75.00	39.27	20.10	38.82	S87°17'52"W
C38	10°57'11"	840.00	179.70	90.12	178.42	N64°18'48"W
C39	5°40'37"	880.00	87.19	43.83	87.15	S86°57'05"E
C40	56°24'38"	25.00	24.61	13.41	23.63	S35°54'27"E
C41	52°09'14"	25.00	22.76	12.23	21.98	S18°22'29"W
C42	5°41'09"	1463.00	145.18	72.85	145.12	S80°53'15"W
C43	4°14'34"	1463.00	108.33	54.19	108.31	S55°55'24"W

NOTE:  
SEE INSTRUMENT #050010506 AND INSTRUMENT  
#050010508 FOR A FURTHER DESCRIPTION OF THE  
EASEMENTS.

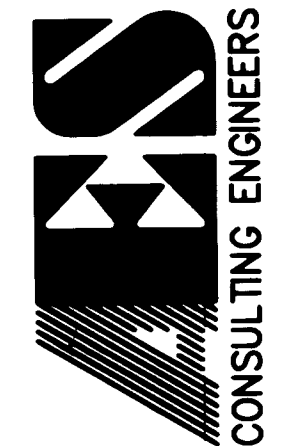
NOTE:  
COA - COMMERCIAL OWNERS ASSOCIATION EASEMENT  
(NEW TOWN COMMERCIAL ASSOCIATION)



City of Williamsburg & County of James City  
Circuit Court; This PLAT was recorded on  
at 1:22 AM/PM, PB \_\_\_\_\_ PG \_\_\_\_\_  
DOCUMENT # 060004140  
BETSY B. WOOLRIDGE, CLERK  
REVISOR: *Betsy Woolridge* Clerk

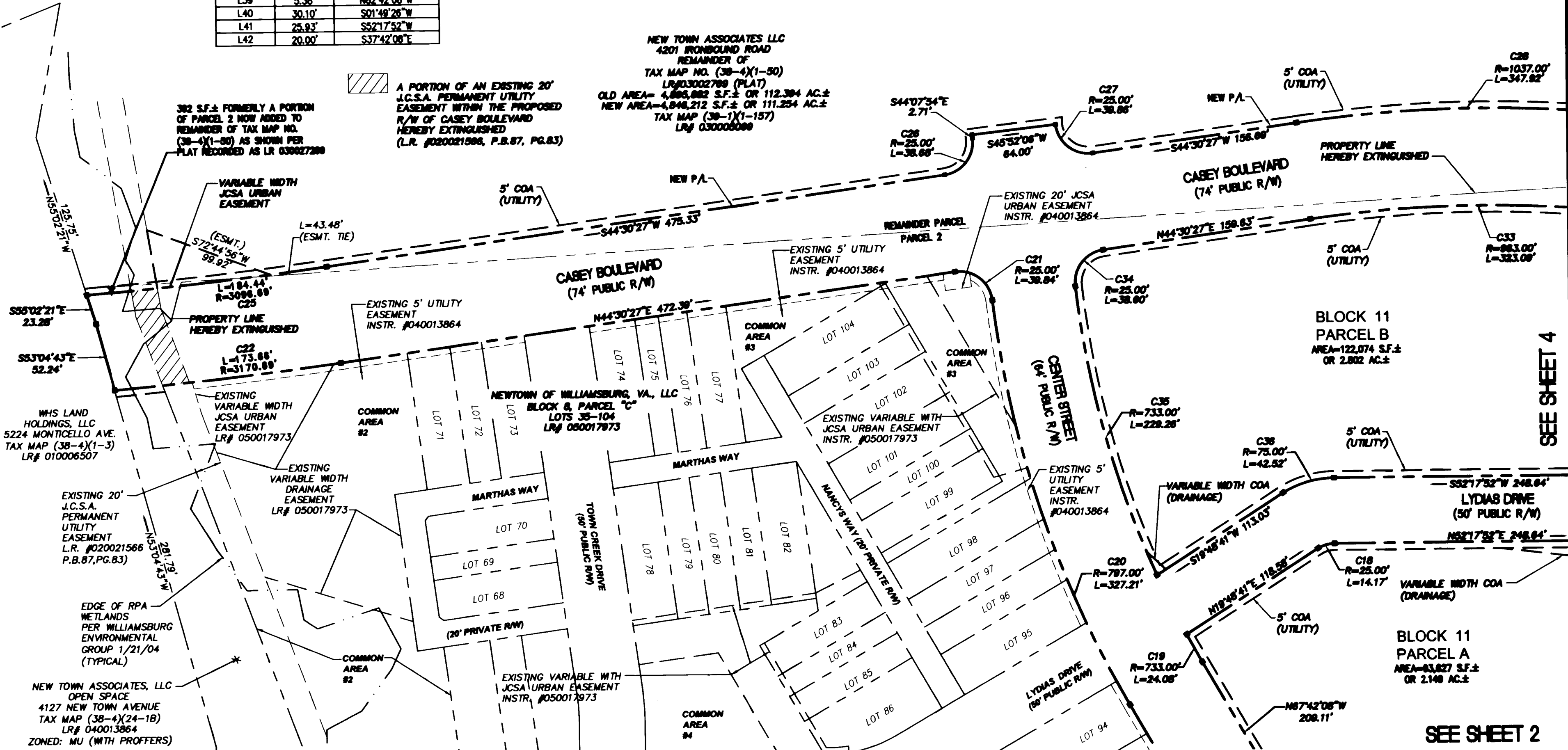
NO.	DATE	REVISION / COMMENT / NOTE
3	12/20/05	REV. BLK 9 PAR. A AND URBAN ESMTS. PER OWNER
2	12/8/05	REVISED PER COUNTY COMMENTS
1	9/1/05	REVISED PARCEL A AND E AND JCSA URBAN ESMT.

5248 Olde Towne Road, Suite 1  
Williamsburg, Virginia 23188  
(757) 253-0040  
Fax (757) 220-8994



PLAT OF SUBDIVISION  
AND BOUNDARY LINE ADJUSTMENT  
SHOWING VARIOUS PARCELS  
BEING PORTIONS OF PARCEL 2 AND SECTION 6  
NEW TOWN  
BEING A PORTION OF THE PROPERTY OWNED BY  
NEW TOWN ASSOCIATES, LLC  
BERKELEY DISTRICT COUNTY OF JAMES CITY VIRGINIA

Designed AES	Drawn JFS
Scale 1"=60"	Date 8/5/05
Project No. 6632-E-23-5	
Drawing No. 3 OF 4	



SEE SHEET 4

SEE SHEET 2