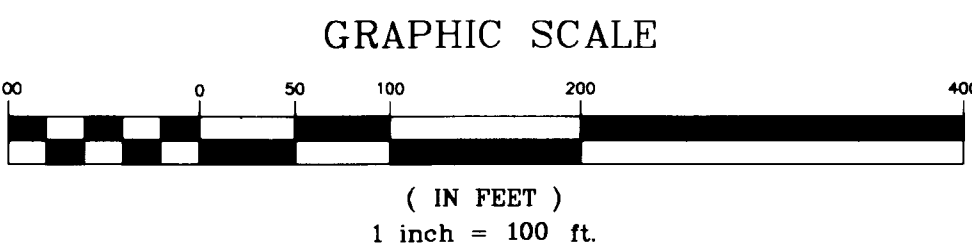
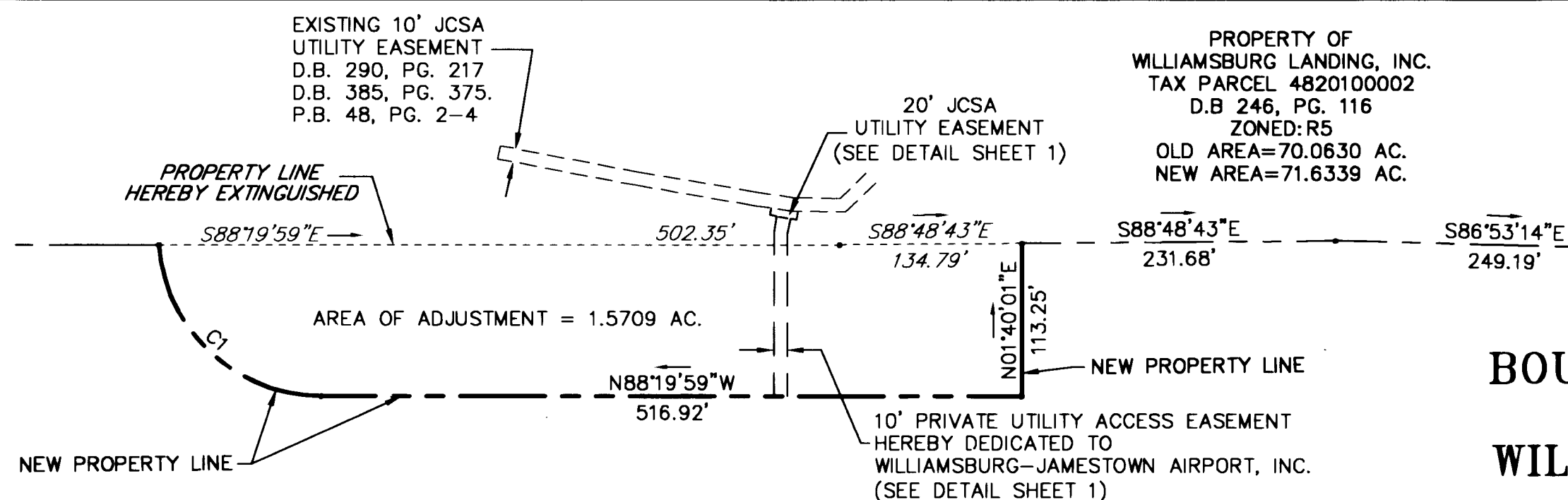
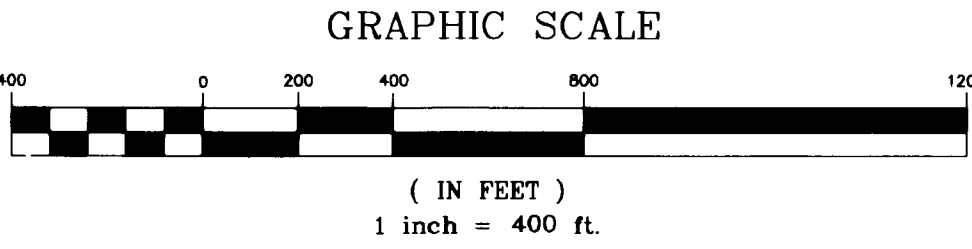
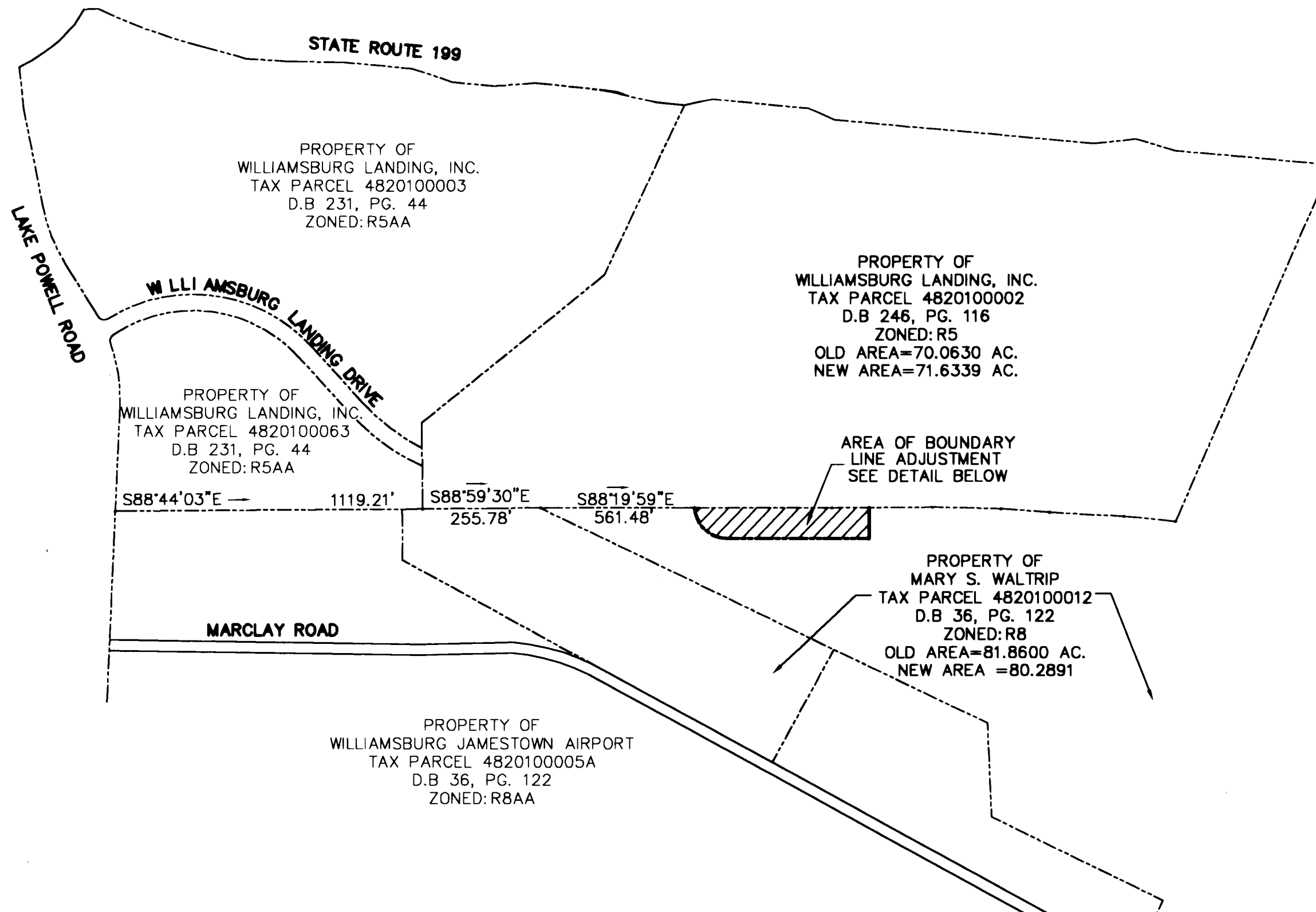


#060003591



**BOUNDARY LINE ADJUSTMENT
BETWEEN THE PROPERTIES OF
WILLIAMSBURG LANDING, INC.
TAX PARCEL 4820100002
AND
MARY S. WALTRIP
TAX PARCEL 4820100012**

**JAMES CITY COUNTY, VIRGINIA
SCALE: AS SHOWN DATE: JUNE 1, 2005
SHEET 2 OF 2**

**LANDMARK
DESIGN GROUP**
Engineers • Planners • Surveyors
Landscape Architects • Environmental Consultants

4029 Ironbound Road
Suite 100
Williamsburg, VA 23188
Tel. (757) 253-2975
Fax (757) 229-0049
Email: lmdg@landmarkdg.com

5544 Greenwich Road
Suite 200
Virginia Beach, VA 23462
Tel. (757) 473-2000
Fax (757) 497-7933
Email: lmdg@landmarkdg.com



City of Williamsburg & County of James City
Circuit Court: This PLAT was recorded on
21 February 2006
at *10:39* AM/PM, PG. *2006*
DOCUMENT # *06 0003591*
BETSY B. WOOLRIDGE, CLERK
Betsy B. Woolridge Clerk

LINE TABLE		
LINE	LENGTH	BEARING
L1	6.19'	S11°05'05"W
L2	20.00'	S78°54'55"E
L3	5.22'	S11°05'05"W
L4	39.68'	N49°31'10"W
L5	10.74'	N11°05'05"E
L6	11.56'	N11°05'05"E
L7	121.50'	N01°40'01"E
L8	120.67'	N01°40'01"E

CURVE TABLE						
CURVE	LENGTH	RADIUS	TANGENT	CHORD	CHORD BEARING	DELTA
C1	180.90'	120.50'	112.39'	164.38'	N45°19'36"W	B6°00'46"

Large/Small Plat(s) Recorded
herewith as # **060003591**

2000.312-000.08 Wmbg_Lndg-Airport-BLA-Plat\WBL-BLA.dwg