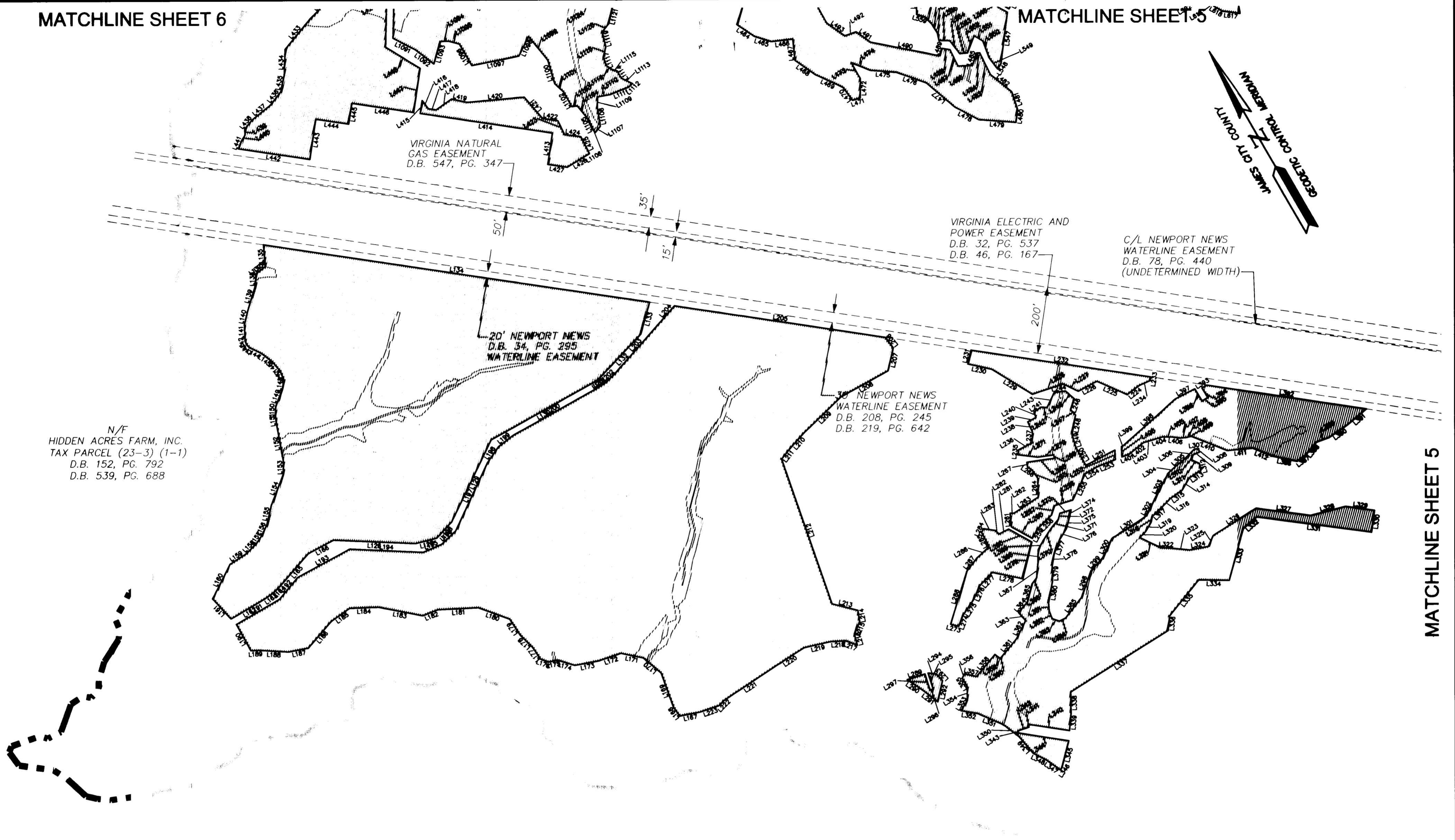
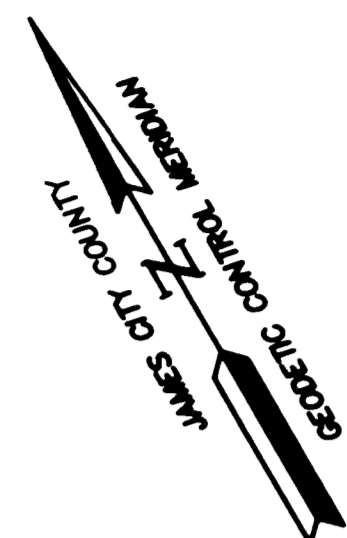


#060001803

MATCHLINE SHEET 6

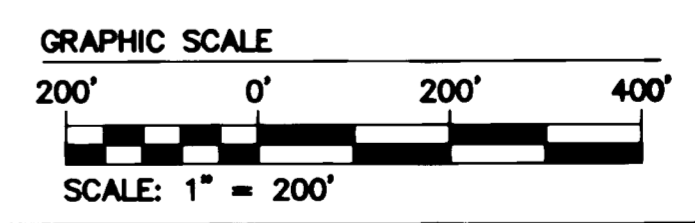
MATCHLINE SHEET 5



MATCHLINE SHEET 5

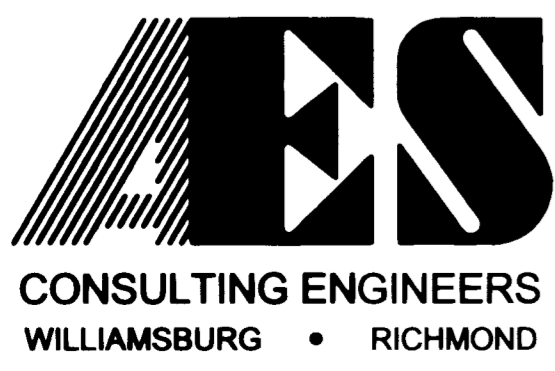
MATCHLINE SHEET 3

NOTE:
THE LINES SHOWN ON THIS MAP ARE NOT INTENDED TO BE PROPERTY LINES AND ARE SHOWN ONLY TO DESIGNATE THE PRESERVATION AREA. SOME OF THE RECORDED OPEN SPACES ARE INCLUDED IN THIS TOTAL. THESE LINES SHOWN HEREON MAY BE SUBJECT TO CHANGE BASED ON FUTURE DEVELOPMENT.



10 Large/Small Plat(s) Recorded herewith as # **060001803**

S:\Jobs\888111L-Preservation Map and Exhibit-DEQ\dwg\Cad\MAP SHOWING PRESERVATION AREAS.dwg, 1/25/2006 9:45:39 AM, heb



5248 Olde Towne Road, Suite 1
Williamsburg, Virginia 23188
(757) 253-0040
Fax (757) 220-8994

MAP SHOWING PRESERVATION AREAS
LOCATED ON THE PROPERTY OWNED BY
COLONIAL HERITAGE
STONEHOUSE DISTRICT COUNTY OF JAMES CITY VIRGINIA

City of Williamsburg & County of James City			
Circuit Court: This PLAT was recorded on		1-25-2006	
at 3:04 PM, PG. 1			
DOCUMENT # 060001803			
BETSY B. WOOLRIDGE, CLERK			
<i>Betsy B. Woolridge</i> Clerk			
No.	DATE	REVISION / COMMENT / NOTE	REVIEWED BY

Designed AES	Drawn AES
Scale 1" = 20'	Date 03/16/2005
Project No. 8881-11L	
Drawing No. 3 of 10	