

#060001536

SURVEYOR'S CERTIFICATE

I, ROBERT D. MANN, A DULY REGISTERED LAND SURVEYOR, DO HEREBY CERTIFY THAT, TO THE BEST OF MY KNOWLEDGE AND BELIEF, THIS PLAT FOR PHASE 13, UNIT #13, WILLIAMSBURG VILLAGE AT NORGE CONDOMINIUM IS ACCURATE AND COMPLIES WITH THE PROVISIONS OF VIRGINIA CODE ANN., SUBSECTION 85-79.58(A), AS AMENDED.

ROBERT D. MANN, L.S. #2509 DATE 1/6/06

CE - COMMON ELEMENTS

COMMON ELEMENTS INCLUDE ALL PORTIONS OF THE CONDOMINIUM OTHER THAN THE UNITS DEFINED IN THE CONDOMINIUM INSTRUMENTS (AS DEFINED IN THE DECLARATION OF CONDOMINIUM).

EXAMPLES OF COMMON ELEMENTS ARE: PARKING, PAVED AREAS, THE GROUNDS (WHETHER OR NOT LANDSCAPED), ENTRANCE MONUMENTS, DRAINAGE PONDS, ALL PORTIONS OF THE BUILDINGS NOT A PART OF THE UNIT NOR DEFINED AS LIMITED COMMON ELEMENTS, AND ALL CONDUITS, INSTALLATIONS, WIRES, PIPES, EQUIPMENT, ETC. WHICH SERVE OTHER COMMON ELEMENTS OR WHICH SERVE MORE THAN ONE UNIT.

THE UNIT OWNERS ASSOCIATION IS RESPONSIBLE FOR MAINTENANCE OF COMMON LANDS TO THE EXTENT THE SAME ARE LOCATED WITHIN THE COMMON ELEMENTS OF THE CONDOMINIUM AND NOT WITHSTANDING THE FACT THAT A PORTION OF THOSE COMMON LANDS MAY BE SUBJECT TO A NATURAL OPEN SPACE EASEMENT DEDICATED TO JAMES CITY COUNTY.

LCE - LIMITED COMMON ELEMENTS

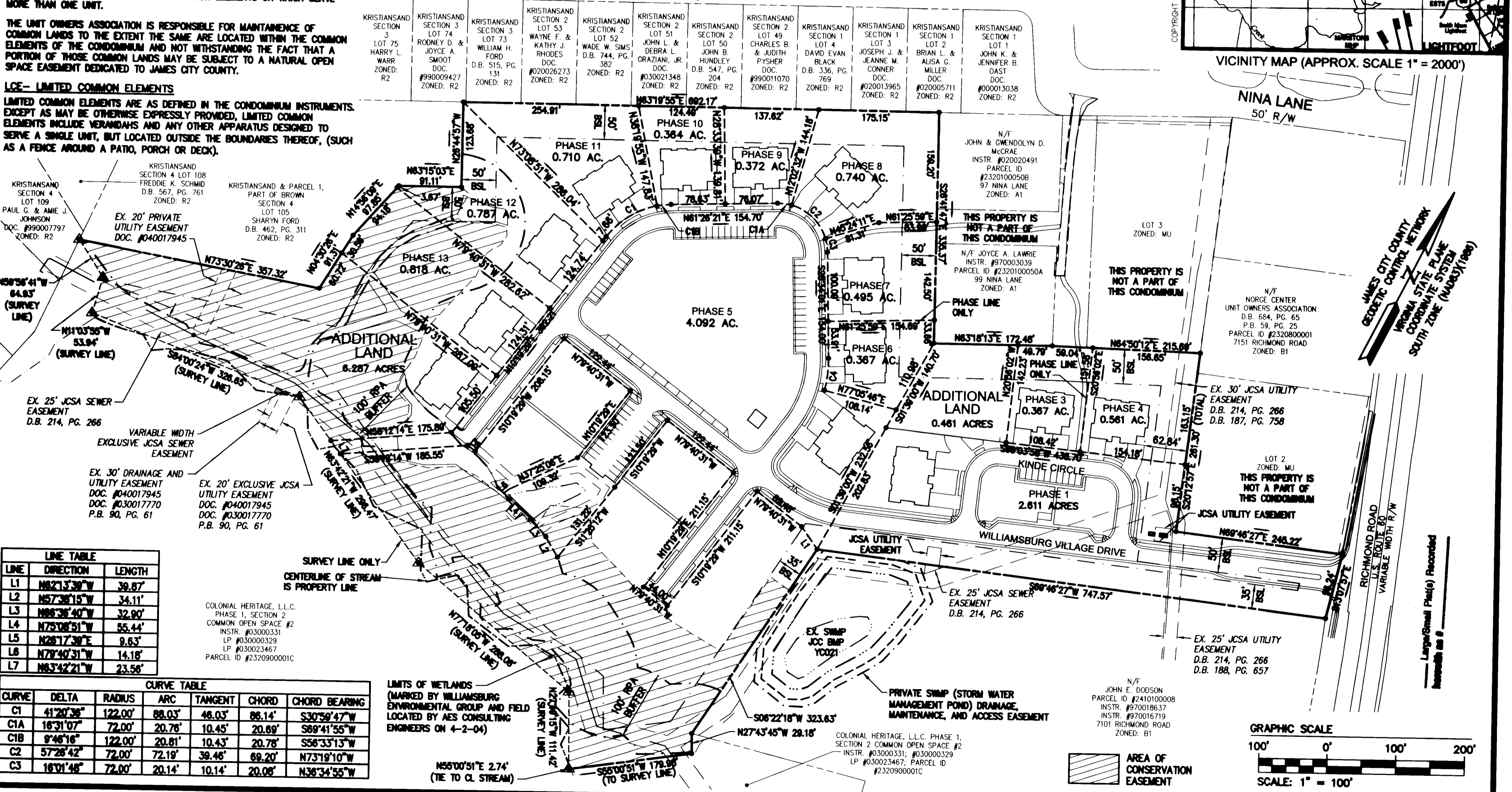
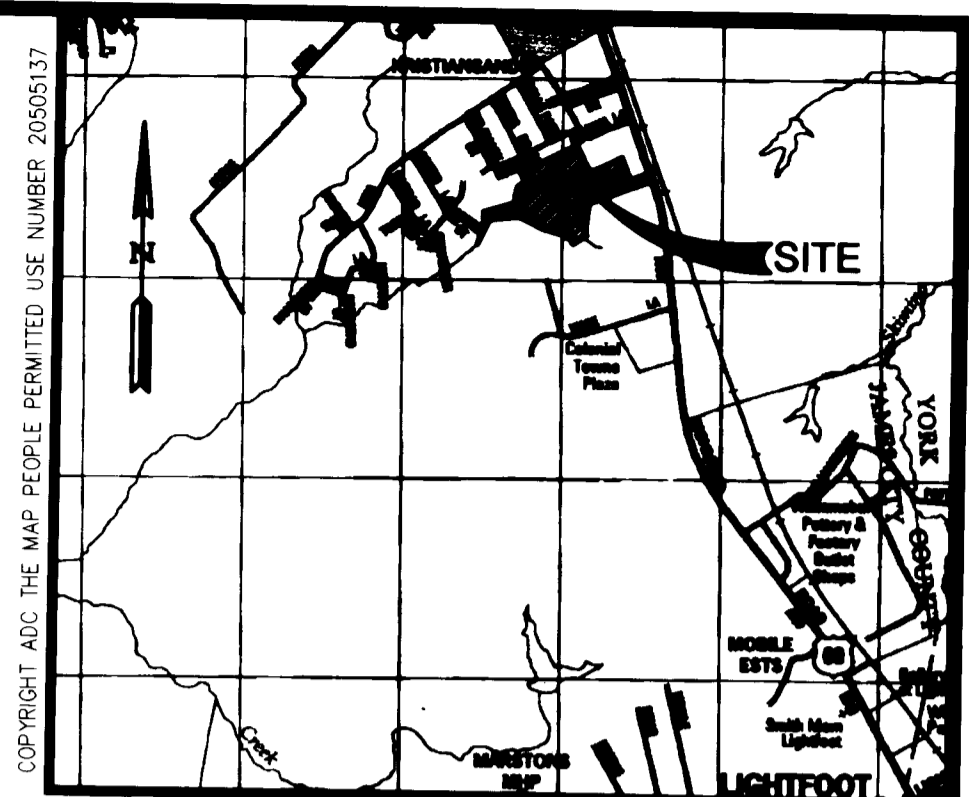
LIMITED COMMON ELEMENTS ARE AS DEFINED IN THE CONDOMINIUM INSTRUMENTS. EXCEPT AS MAY BE OTHERWISE EXPRESSLY PROVIDED, LIMITED COMMON ELEMENTS INCLUDE VERANDAHs AND ANY OTHER APPARATUS DESIGNED TO SERVE A SINGLE UNIT, BUT LOCATED OUTSIDE THE BOUNDARIES THEREOF, (SUCH AS A FENCE AROUND A PATIO, PORCH OR DECK).

AREA TABULATION

PHASE 1	2.611 AC.±
PHASE 3	0.367 AC.±
PHASE 4	0.561 AC.±
PHASE 5	4.092 AC.±
PHASE 6	0.367 AC.±
PHASE 7	0.495 AC.±
PHASE 8	0.740 AC.±
PHASE 9	0.372 AC.±
PHASE 10	0.364 AC.±
PHASE 11	0.710 AC.±
PHASE 12	0.787 AC.±
PHASE 13	0.818 AC.±
ADDITIONAL LAND	6.748 AC.±
TOTAL AREA	19.032 AC.±

- GENERAL NOTES**
- SITE IS ZONED M-U, (MIXED USE) - WITH PROFFERS (PROFFERS RECORDED AS INSTRUMENT #040018082)
 - WETLANDS AND LAND WITHIN THE RESOURCE PROTECTION AREAS SHALL REMAIN IN A NATURAL UNDISTURBED STATE EXCEPT FOR THOSE ACTIVITIES PERMITTED BY SECTION 23-7 (1) OF THE JAMES CITY COUNTY CODE.
 - NATURAL OPEN SPACE EASEMENTS SHALL REMAIN IN A NATURAL UNDISTURBED STATE EXCEPT FOR THOSE ACTIVITIES REFERENCED ON THE DEED OF EASEMENT.
 - THE PROPERTY AS SHOWN IS ALL OF TAX PARCEL (23-2)(1-50). PROPERTY ADDRESS: 7145 RICHMOND ROAD.
 - THIS PROPERTY LIES IN ZONE "X", (AREAS DETERMINED TO BE OUTSIDE THE 500 YEAR FLOOD PLAN), PER F.L.R.M. 510201-0020 B, DATED FEBRUARY 8, 1991.
 - PROPERTY REF.: INSTRUMENT #040017945.
 - THIS PLAT HAS BEEN PREPARED WITHOUT THE BENEFIT OF A TITLE REPORT AND IS SUBJECT TO EASEMENTS, SERVITUDES AND COVENANTS OF RECORD.
 - THIS PLAT IS BASED ON AVAILABLE DEEDS AND PLATS OF RECORD AND DOES NOT REPRESENT AN ACTUAL FIELD SURVEY.

RONDANE PLACE
60' R/W

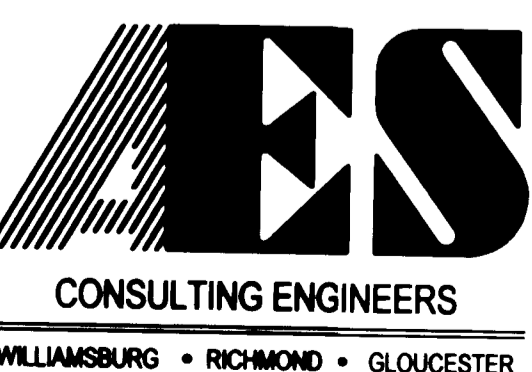


LINE TABLE

LINE	DIRECTION	LENGTH
L1	N62°13'39"W	39.87'
L2	N57°36'15"W	34.11'
L3	N69°36'40"W	32.90'
L4	N75°08'51"W	55.44'
L5	N28°17'39"E	9.63'
L6	N79°40'31"W	14.18'
L7	N63°42'21"W	23.56'

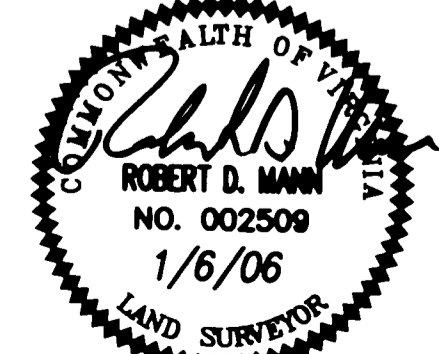
CURVE TABLE

CURVE	DELTA	RADIUS	ARC	TANGENT	CHORD	CHORD BEARING
C1	41°20'36"	122.00'	88.03'	48.03'	86.14'	S30°58'47"W
C1A	16°31'07"	72.00'	20.76'	10.45'	20.69'	S69°41'55"W
C1B	9°46'16"	122.00'	20.81'	10.43'	20.78'	S56°33'13"W
C2	57°26'42"	72.00'	72.19'	38.48'	69.20'	N73°19'10"W
C3	16°01'48"	72.00'	20.14'	10.14'	20.08'	N36°34'55"W



5248 Olde Towne Road, Suite 1
Williamsburg, Virginia 23188
(757) 253-0040
Fax (757) 220-8994

PLAT OF CONDOMINIUM
WILLIAMSBURG VILLAGE AT NORGE CONDOMINIUM
PHASE 13, UNIT #13
STONEHOUSE DISTRICT COUNTY OF JAMES CITY VIRGINIA



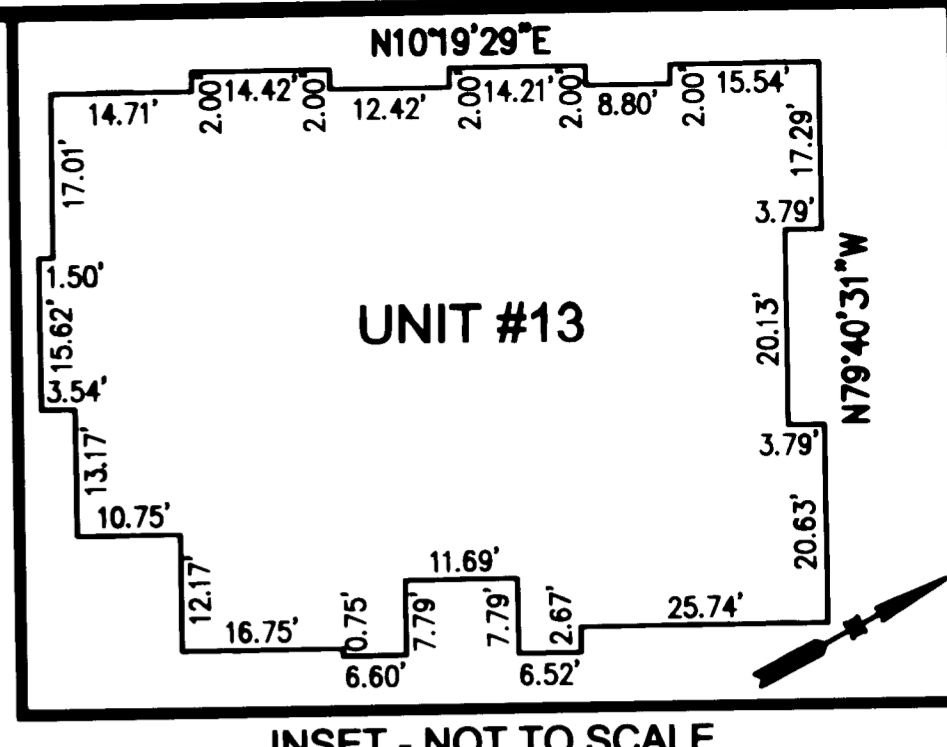
No.	DATE	REVISION / COMMENT / NOTE	BY

Designed VMB/JAG	Drawn AWT
Scale 1"=100'	Date 1/6/06
Project No. 9206-2	Drawing No. 1 of 2

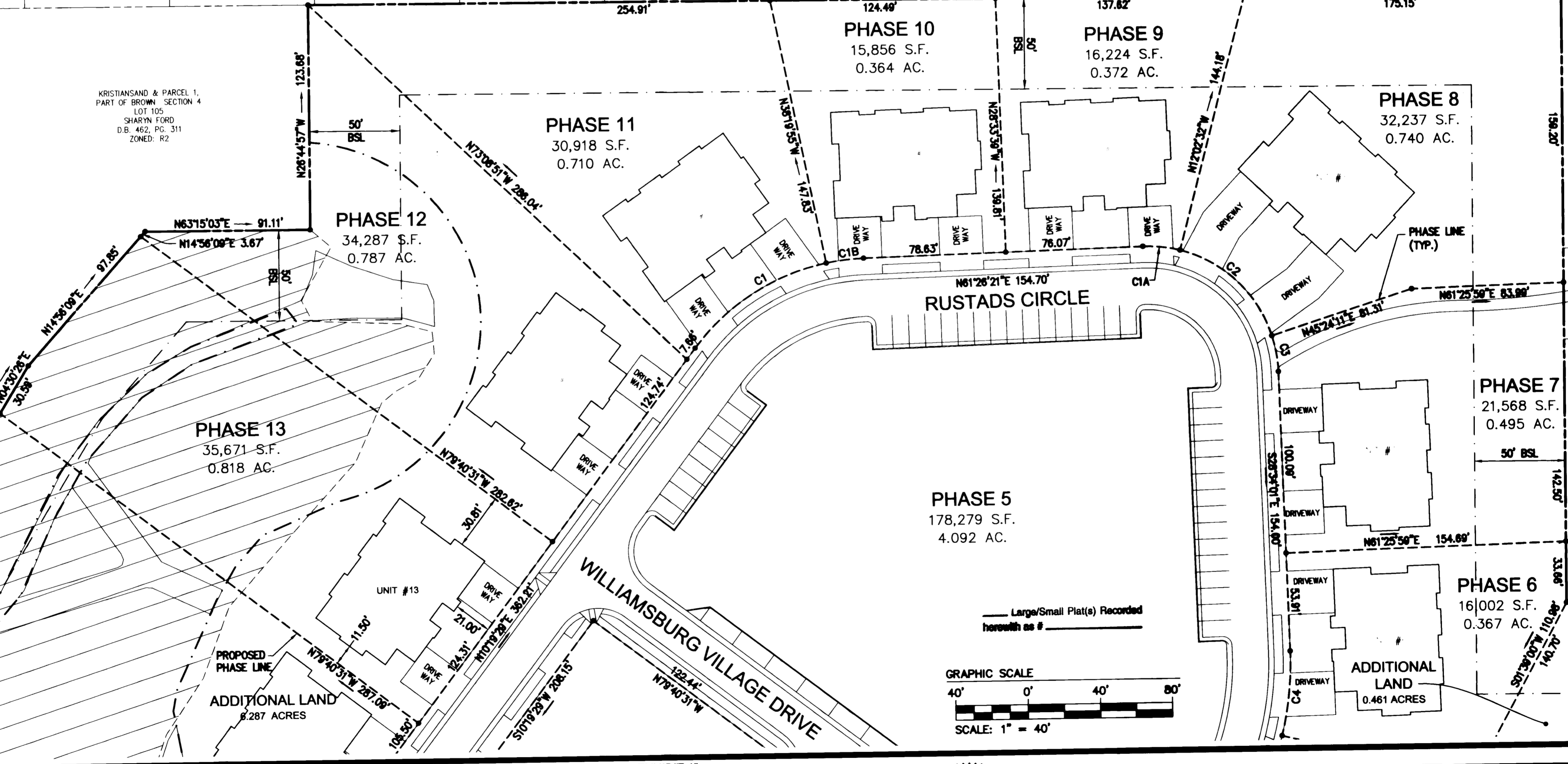
S:\Jobs\19286\02-Norge Condo Plats\dwg\Plats\Record\Phase 13\1928602Condo Sh 001 PHASE13.dwg, 1/10/2006 11:13:36 AM, EAW

#060001536

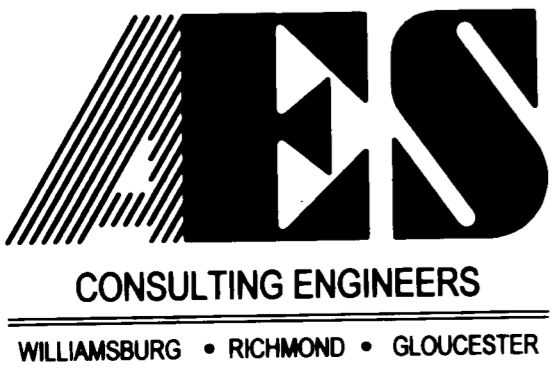
LEGEND
 COMMON ELEMENT



KRISTIANSAND SECTION 3 LOT 75 HARRY L. WARR ZONED: R2
 KRISTIANSAND SECTION 3 LOT 74 RODNEY D. & JOYCE A. SMOOT DOC. #990009427 ZONED: R2
 KRISTIANSAND SECTION 3 LOT 73 WILLIAM H. FORD D.B. 515, PG. 131 ZONED: R2
 KRISTIANSAND SECTION 2 LOT 53 WAYNE F. & KATHY J. RHODES DOC. #020026273 ZONED: R2
 KRISTIANSAND SECTION 2 LOT 52 WADE W. SIMS D.B. 744, PG. 382 ZONED: R2
 KRISTIANSAND SECTION 2 LOT 51 JOHN L. & DEBRA L. GRAZIANI, JR. DOC. #030021348 ZONED: R2
 KRISTIANSAND SECTION 2 LOT 50 JOHN B. HUNDLEY D.B. 547, PG. 204 ZONED: R2
 KRISTIANSAND SECTION 2 LOT 49 CHARLES B. & JUDITH PYSHER DOC. #990011070 ZONED: R2
 KRISTIANSAND SECTION 1 LOT 4 DAVID EVAN BLACK D.B. 336, PG. 769 ZONED: R2
 KRISTIANSAND SECTION 1 LOT 3 JOSEPH J. & JEANNE M. CONNER DOC. #020013965 ZONED: R2
 KRISTIANSAND SECTION 1 LOT 2 BRIAN L. & ALISA G. MILLER DOC. #020005711 ZONED: R2

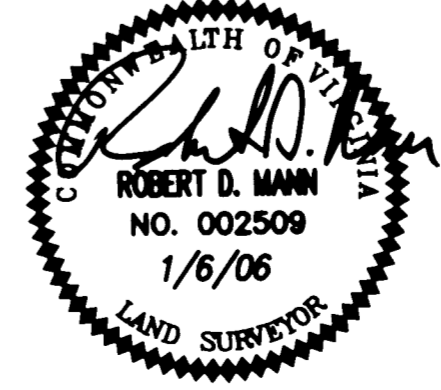


S:\Jobs\9286\02-Norge Condo Plats\dwg\Plats\Record\Phase 13\928602Condo Sh 002 PHASE13.dwg, 1/10/2006 11:19:00 AM, EAW



5248 Olde Towne Road, Suite 1
 Williamsburg, Virginia 23188
 (757) 253-0040
 Fax (757) 220-8994

"EXHIBIT 1"
 PLAT OF CONDOMINIUM
WILLIAMSBURG VILLAGE AT NORGE CONDOMINIUM
 PHASE 13, UNIT #13
 STONEHOUSE DISTRICT COUNTY OF JAMES CITY VIRGINIA



No.	DATE	REVISION / COMMENT / NOTE	BY

City of Williamsburg & County of James City
 Circuit Court: This PLAT was recorded on 1-23-2006
 at 2:18 AM/PM, PG. 1
 DOCUMENT # 060001536
 BETSY B. WOOLRIDGE, CLERK
 Betsy B. Woolridge Clerk

Designed VMB/JAG	Drawn AWT
Scale 1"=40'	Date 1/6/06
Project No. 9286-2	
Drawing No. 2 of 2	

Large/Small Plat(s) Recorded herewith as # 060001536