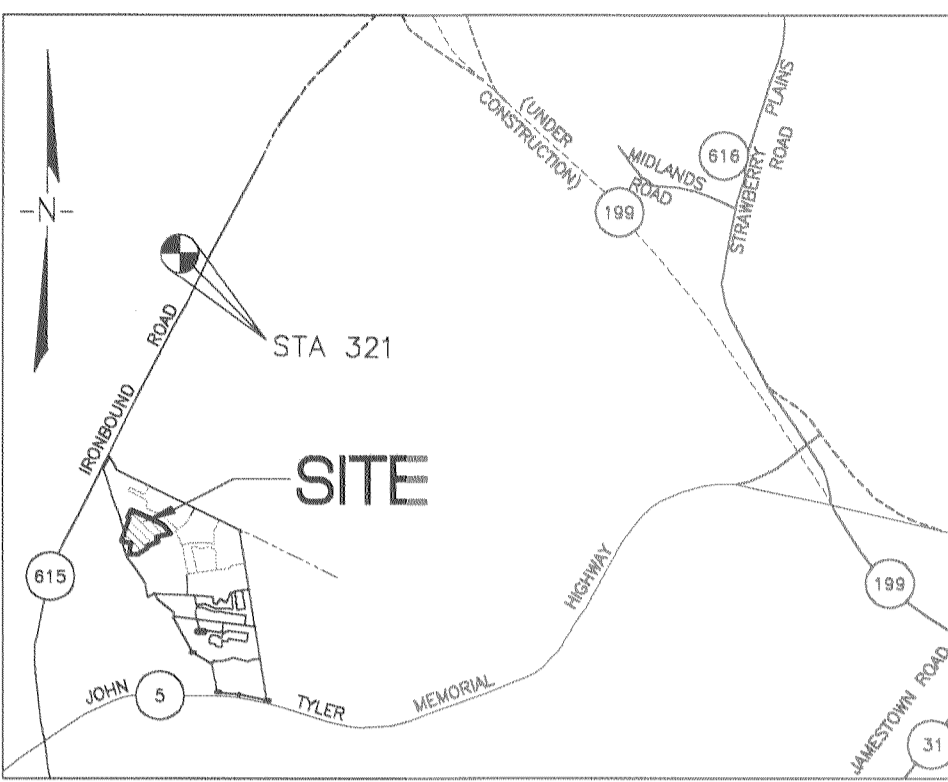
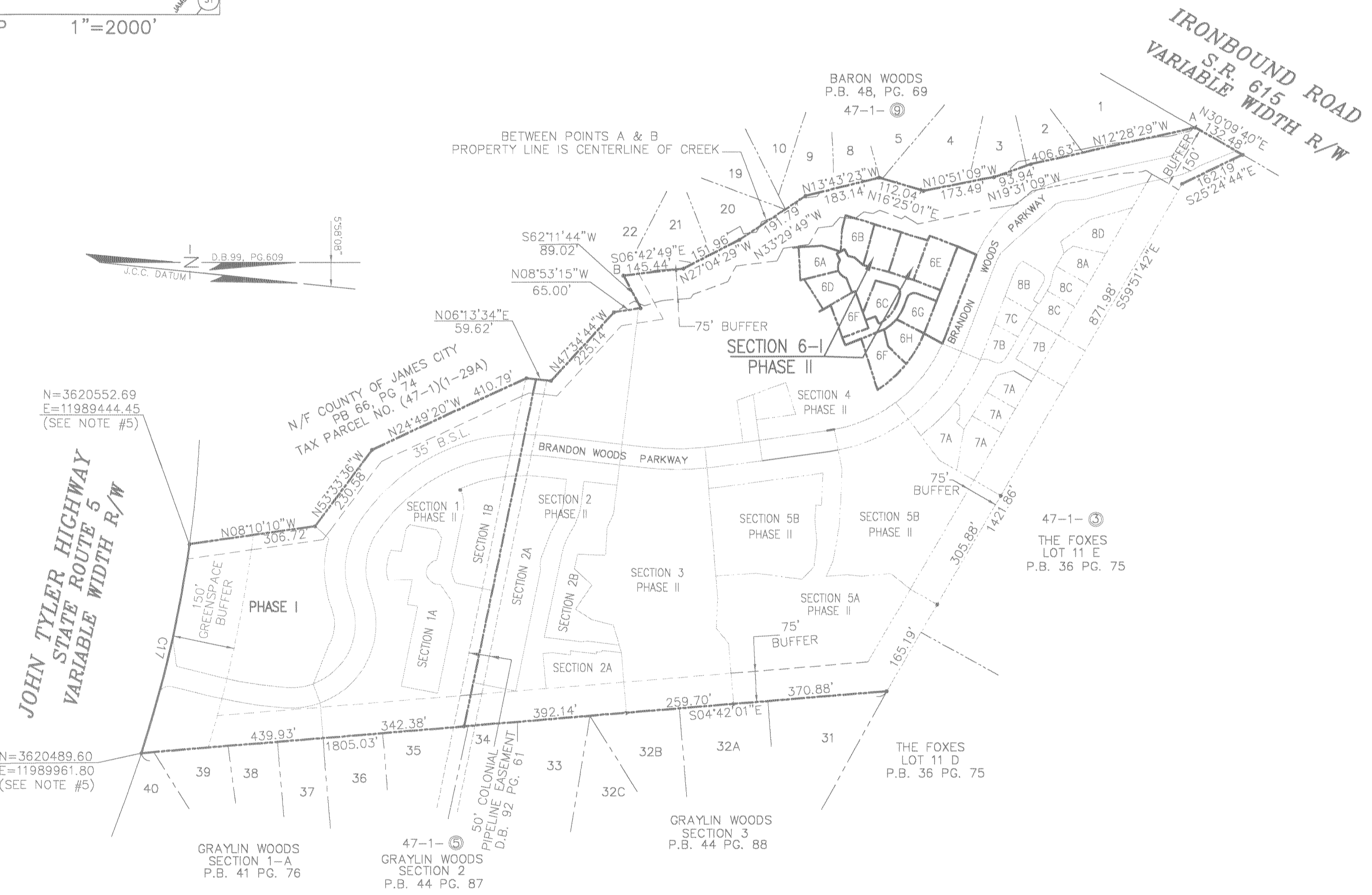


#050029103



VICINITY MAP 1"=2000'



N=3620552.69
E=11989444.45
(SEE NOTE #5)

N=3620489.60
E=11989961.80
(SEE NOTE #5)

N/F COUNTY OF JAMES CITY
PB 66, PG 74
TAX PARCEL NO. (47-1)(1-29A)

BARON WOODS
P.B. 48, PG. 69
47-1-Ⓢ

47-1-Ⓢ
THE FOXES
LOT 11 E
P.B. 36 PG. 75

THE FOXES
LOT 11 D
P.B. 36 PG. 75

GRAYLIN WOODS
SECTION 3
P.B. 44 PG. 88

47-1-Ⓢ
GRAYLIN WOODS
SECTION 2
P.B. 44 PG. 87

GRAYLIN WOODS
SECTION 1-A
P.B. 41 PG. 76

CONDOMINIUM PLAT
OF
SECTION 6-I
(A PORTION OF PHASE II)
BRANDON WOODS

JAMES CITY COUNTY, VIRGINIA
SCALE: 1"=200' DATE: 12/06/05

SHEET 1 OF 4

**LANDMARK
DESIGN GROUP**

Engineers • Planners • Surveyors
Landscape Architects • Environmental Consultants
4029 IRONBOUND ROAD SUITE 100
WILLIAMSBURG, VA 23188
TEL (757) 253-2975 FAX(757) 229-0049



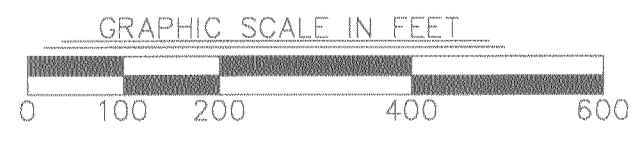
STATE OF VIRGINIA, COUNTY OF JAMES CITY

IN THE CLERK'S OFFICE OF THE CIRCUIT COURT THE PLAT
SHOWN HEREON WAS PRESENTED AND ADMITTED TO RECORD
Dec 8, 2005 at 2:10 p.m. AS THE LAW DIRECTS.

TESTEE: Lee Ann Hallman Dep. CLERK

DOCUMENT NO. 050029103

4 Large/Small Plat(s) Recorded
herewith as # 050029103

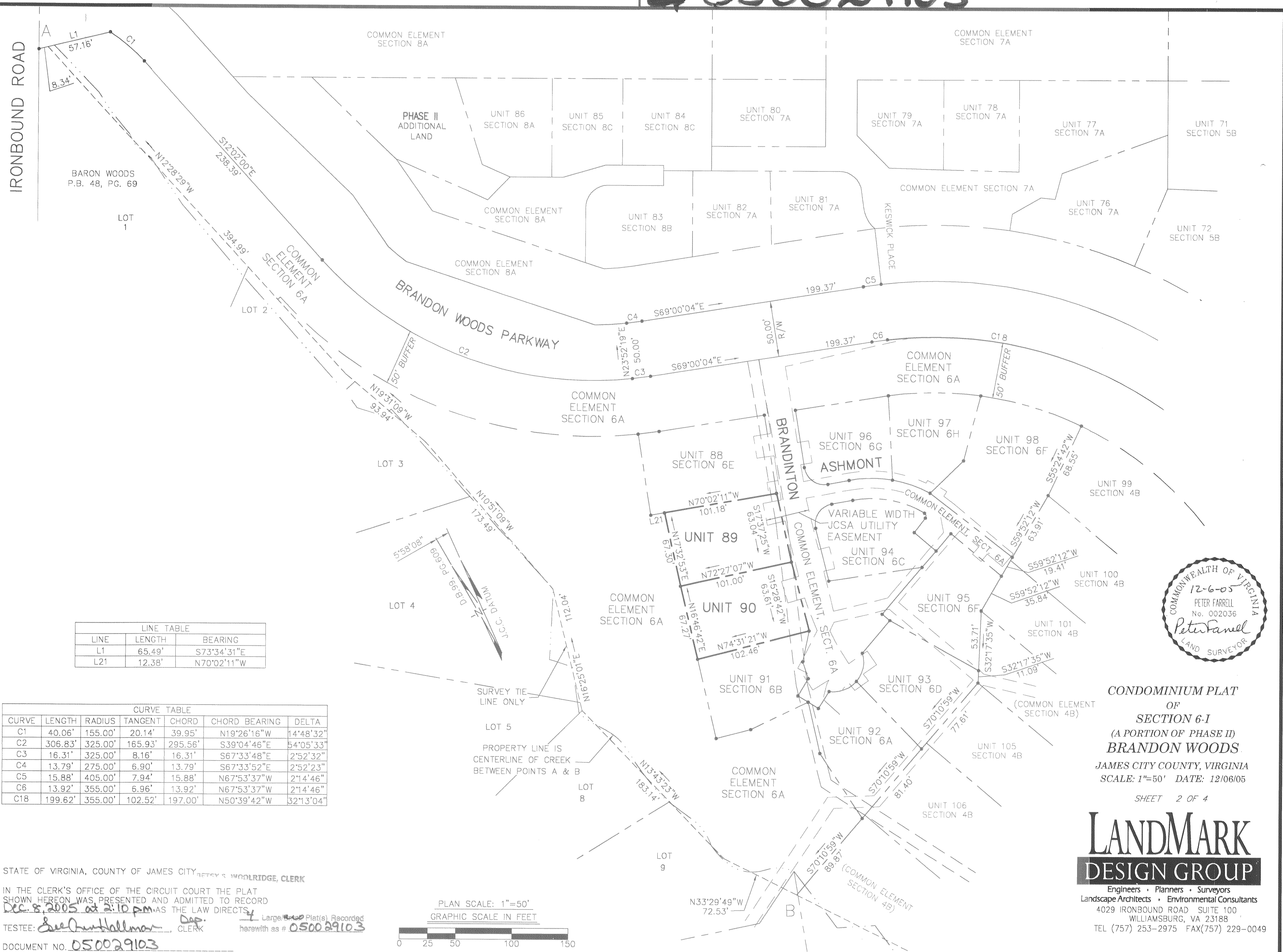


GETSY & WOOLRIDGE, CLERK

DRAWN BY: PF
CHKD BY: AST

PROJ. NO.: 1980074-000.62
DWG NO.: 1672RW

050029103



LINE TABLE

LINE	LENGTH	BEARING
L1	65.49'	S73°34'31"E
L21	12.38'	N70°02'11"W

CURVE TABLE

CURVE	LENGTH	RADIUS	TANGENT	CHORD	CHORD BEARING	DELTA
C1	40.06'	155.00'	20.14'	39.95'	N19°26'16"W	14°48'32"
C2	306.83'	325.00'	165.93'	295.56'	S39°04'46"E	54°05'33"
C3	16.31'	325.00'	8.16'	16.31'	S67°33'48"E	2°52'32"
C4	13.79'	275.00'	6.90'	13.79'	S67°33'52"E	2°52'23"
C5	15.88'	405.00'	7.94'	15.88'	N67°53'37"W	2°14'46"
C6	13.92'	355.00'	6.96'	13.92'	N67°53'37"W	2°14'46"
C18	199.62'	355.00'	102.52'	197.00'	N50°39'42"W	32°13'04"

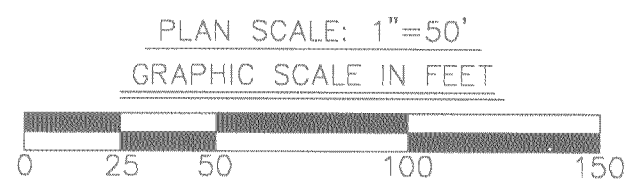


CONDOMINIUM PLAT
OF
SECTION 6-I
(A PORTION OF PHASE II)
BRANDON WOODS.
JAMES CITY COUNTY, VIRGINIA
SCALE: 1"=50' DATE: 12/06/05
SHEET 2 OF 4

LANDMARK
DESIGN GROUP

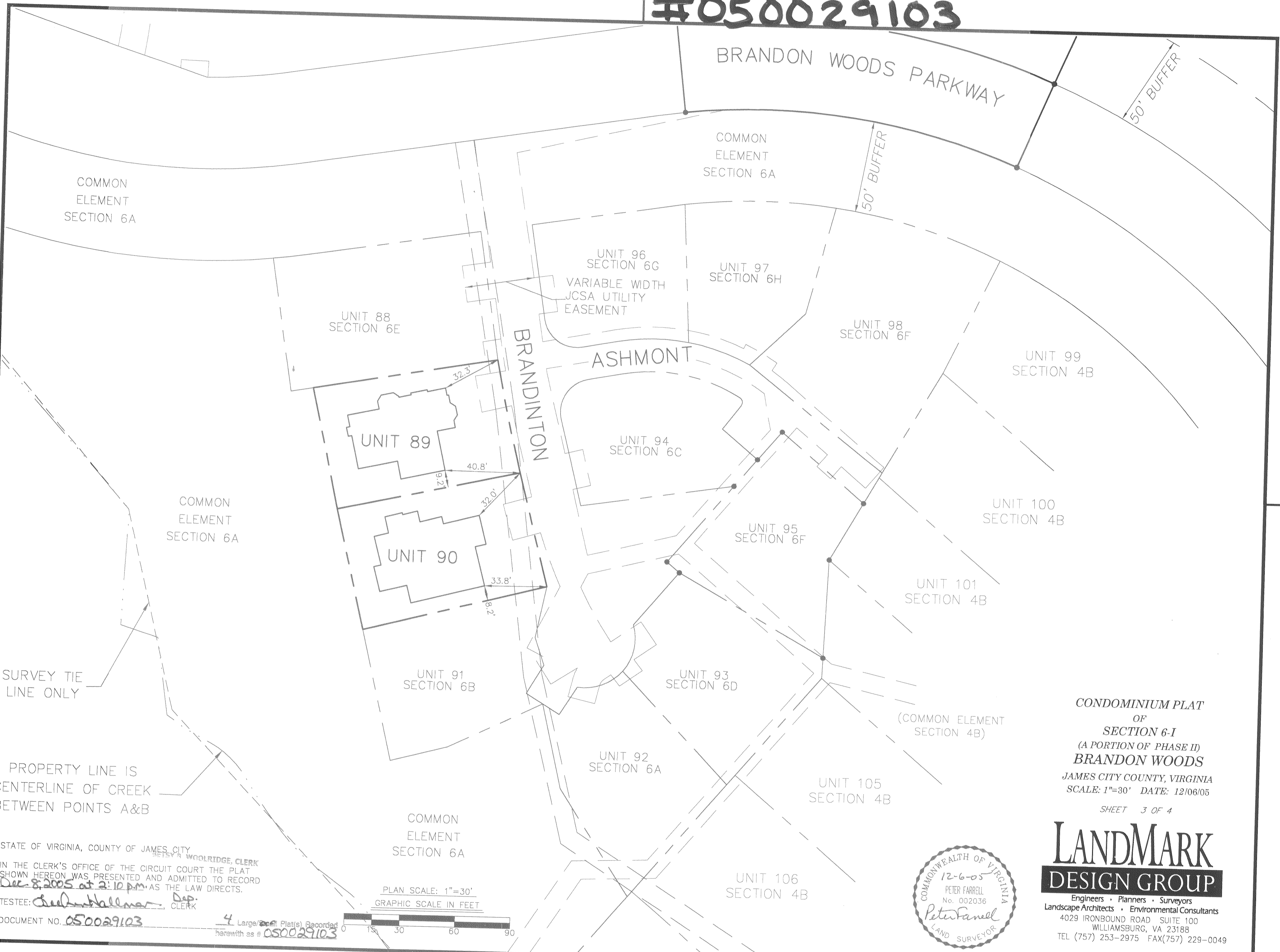
Engineers • Planners • Surveyors
Landscape Architects • Environmental Consultants
4029 IRONBOUND ROAD SUITE 100
WILLIAMSBURG, VA 23188
TEL (757) 253-2975 FAX(757) 229-0049

STATE OF VIRGINIA, COUNTY OF JAMES CITY, JEFFREY S. WOOLRIDGE, CLERK
IN THE CLERK'S OFFICE OF THE CIRCUIT COURT THE PLAT
SHOWN HEREON WAS PRESENTED AND ADMITTED TO RECORD
Dec 8, 2005 at 2:10 pm AS THE LAW DIRECTS
TESTEE: See [Signature] Dep. CLERK
DOCUMENT NO. 050029103



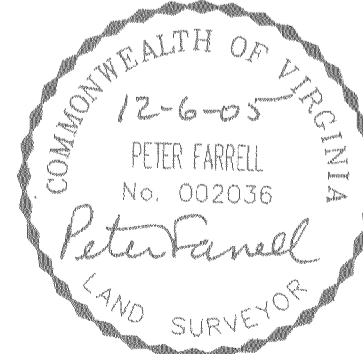
DRAWN BY: PF
CHKD BY: AST
PROJ. NO.: 1980074-000.62
DWG. NO.: 16727W

#050029103



CONDOMINIUM PLAT
OF
SECTION 6-I
(A PORTION OF PHASE II)
BRANDON WOODS
JAMES CITY COUNTY, VIRGINIA
SCALE: 1"=30' DATE: 12/06/05
SHEET 3 OF 4

LANDMARK
DESIGN GROUP
Engineers • Planners • Surveyors
Landscape Architects • Environmental Consultants
4029 IRONBOUND ROAD SUITE 100
WILLIAMSBURG, VA 23188
TEL (757) 253-2975 FAX(757) 229-0049



STATE OF VIRGINIA, COUNTY OF JAMES CITY
JESSY S. WOOLRIDGE, CLERK
IN THE CLERK'S OFFICE OF THE CIRCUIT COURT THE PLAT
SHOWN HEREON WAS PRESENTED AND ADMITTED TO RECORD
Dec 8, 2005 at 2:10 p.m. AS THE LAW DIRECTS.
TESTEE: *[Signature]* Dep. CLERK

PLAN SCALE: 1"=30'
GRAPHIC SCALE IN FEET



4 Large Scale Plat(s) Recorded
Herewith as # 050029103

DOCUMENT NO. 050029103

DRAWN BY: PF
CHKD BY: AST
PROJ. NO.: 1980074-000.62
DWG. NO.: 16726W

#050029103

CERTIFICATE OF SOURCE OF TITLE

THE PROPERTY SHOWN ON THIS PLAT WAS CONVEYED BY WOODBURY ASSOCIATES, L.L.C. TO BRANDON WOODS LIMITED PARTNERSHIP, BY DEED DATED DECEMBER 19, 1997 AND RECORDED IN THE OFFICE OF THE CLERK OF THE CIRCUIT COURT OF THE COUNTY OF JAMES CITY AS INSTRUMENT NO. 980000030.

CERTIFICATE OF OWNER(S)

THE PLATTING OF THE LAND HEREON IS WITH THE FREE CONSENT AND IN ACCORDANCE WITH THE DESIRES OF THE UNDERSIGNED OWNERS, PROPRIETORS, AND TRUSTEES IF ANY.

Myrl Hairfield

MYRL HAIRFIELD, MANAGER
BRANDON WOODS L.P.

CERTIFICATE OF NOTARIZATION

STATE OF VIRGINIA

CITY/COUNTY OF James City

I, Heather Gilbert A NOTARY PUBLIC IN AND FOR THE CITY/COUNTY AND STATE AFORESAID, DO HEREBY CERTIFY THAT THE PERSONS WHOSE NAMES AND SIGNED TO THE FOREGOING WRITING HAVE ACKNOWLEDGED THE SAME BEFORE ME IN THE CITY/COUNTY AFORESAID, GIVEN UNDER MY NAME THIS 5th DAY OF December 2005.

MY COMMISSION EXPIRES 12-31-07

Heather Gilbert
SIGNATURE Tras Commissioned as Heather Gilbert

William H Carr

WILLIAM H. CARR, TRUSTEE

CERTIFICATE OF NOTARIZATION

STATE OF VIRGINIA

CITY/COUNTY OF Newport News

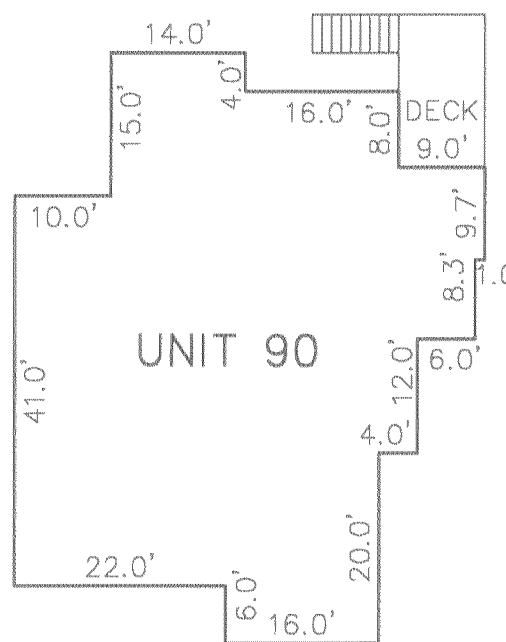
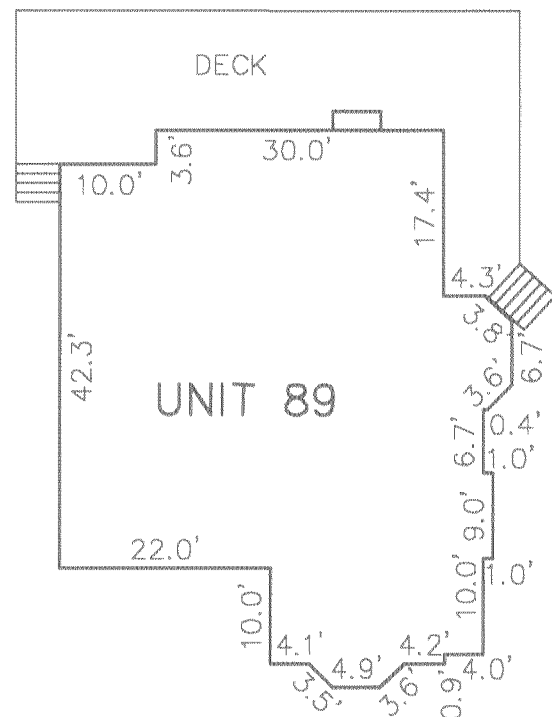
I, Jane O. Linthicum A NOTARY PUBLIC IN AND FOR THE CITY/COUNTY AND STATE AFORESAID, DO HEREBY CERTIFY THAT THE PERSONS WHOSE NAMES AND SIGNED TO THE FOREGOING WRITING HAVE ACKNOWLEDGED THE SAME BEFORE ME IN THE CITY/COUNTY AFORESAID, GIVEN UNDER MY NAME THIS 7th DAY OF December 2005.

MY COMMISSION EXPIRES 9/30/07

Jane O. Linthicum
SIGNATURE

I CERTIFY THAT THIS PLAT IS ACCURATE AND COMPLIES WITH THE PROVISIONS OF SECTION 55-79.58(A) OF THE VIRGINIA CONDOMINIUM ACT. ALL UNITS OR PORTIONS THEREOF DEPICTED HEREON HAVE BEEN SUBSTANTIALLY COMPLETED.

Peter Farrell 12/6/05
PETER FARRELL, LS DATE



PHASE II, SECTION 8D UNIT/LAND TABULATION

UNIT 89 = 6,585 SQ. FT. / 0.1512 AC.

UNIT 90 = 6,656 SQ. FT. / 0.1528 AC.

PHASE II AREA TABULATION

TOTAL SECTION 1	6.9449 AC.
TOTAL SECTION 2	5.5564 AC.
TOTAL SECTION 3	3.8525 AC.
TOTAL SECTION 4A	0.6334 AC.
TOTAL SECTION 4B	1.6214 AC.
TOTAL SECTION 5A	3.7418 AC.
TOTAL SECTION 5B	4.1105 AC.
TOTAL SECTION 6A	3.3386 AC.
TOTAL SECTION 6B	0.1450 AC.
TOTAL SECTION 6C	0.1371 AC.
TOTAL SECTION 6D	0.1568 AC.
TOTAL SECTION 6E	0.1869 AC.
TOTAL SECTION 6F	0.3871 AC.
TOTAL SECTION 6G	0.1274 AC.
TOTAL SECTION 6H	0.1276 AC.
TOTAL SECTION 7A	1.9844 AC.
TOTAL SECTION 7B	0.5344 AC.
TOTAL SECTION 7C	0.1140 AC.
TOTAL SECTION 8A	2.5687 AC.
TOTAL SECTION 8B	0.1590 AC.
TOTAL SECTION 8C	0.2643 AC.
TOTAL SECTION 8D	0.2090 AC.

TOTAL SECTION 6-I
UNITS/LAND TOTAL 0.3040 AC.

TOTAL SECTION 6-I 0.3040 AC.

GENERAL NOTES

- 1) THE PROPERTY IS ZONED LIMITED RESIDENTIAL DISTRICT, R-1 CLUSTER WITH S.U.P.
- 2) THIS PROPERTY IS TAX PARCEL NO. (47-1)(1-29).
- 3) THE PROPERTY IS SERVED BY PUBLIC WATER AND SEWER.
- 4) THE OVERALL EXTERNAL BOUNDARY DEPICTED ON THIS PLAT IS BASED UPON DOCUMENTS OF RECORD AND A FIELD SURVEY OF THE SITE AS FOUND ON APRIL 1, 1997 AND WAS PREPARED WITHOUT THE BENEFIT OF A TITLE EXAMINATION.
- 5) COORDINATES SHOWN ARE REFERENCED TO JAMES CITY COUNTY GEODETIC CONTROL MONUMENT NO. 321.
N=3624001.569
E=11988616.657
- 6) THIS PROPERTY IS SUBJECT TO CONDOMINIUM DECLARATION TO BE RECORDED SIMULTANEOUSLY WITH THIS PLAT.
- 7) EACH CONDOMINIUM UNIT CONSISTS OF THE SPACE WITHIN THE BOUNDARIES ESTABLISHED FOR THAT CONDOMINIUM UNIT TOGETHER WITH ANY IMPROVEMENTS CONSTRUCTED THEREON.
- 8) COMMON ELEMENTS INCLUDE ALL PORTIONS OF THE CONDOMINIUM OTHER THAN THE UNITS DESIGNATED HEREON. EXAMPLES OF COMMON ELEMENTS ARE PRIVATE STREETS, THE GROUNDS (WHETHER OR NOT LANDSCAPED), WALKING TRAIL AND PARK AREAS.
- 9) THE HORIZONTAL LIMITS FOR EACH UNIT ARE DEFINED HEREON BY LINES SHOWN WITH METES AND BOUNDS LYING OUTSIDE THE UNITS IMPROVEMENTS.
- 10) THERE ARE NO DEFINED VERTICAL LIMITS FOR EACH UNIT.

**CONDOMINIUM PLAT
OF
SECTION 6-I
(A PORTION OF PHASE II)
BRANDON WOODS**

JAMES CITY COUNTY, VIRGINIA
SCALE: 1"=20' DATE: 12/06/05

SHEET 4 OF 4



Engineers • Planners • Surveyors
Landscape Architects • Environmental Consultants
4029 IRONBOUND ROAD SUITE 100
WILLIAMSBURG, VA 23188
TEL (757) 253-2975 FAX(757) 229-0049

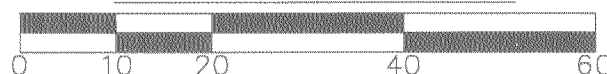
STATE OF VIRGINIA, COUNTY OF JAMES CITY
BETSY B. WOLDRIDGE, CLERK

IN THE CLERK'S OFFICE OF THE CIRCUIT COURT THE PLAT SHOWN HEREON WAS PRESENTED AND ADMITTED TO RECORD
Dec 8, 2005 at 2:10 pm AS THE LAW DIRECTS.

TESTEE: See Deed Hallman Dep.
CLERK

DOCUMENT NO. 050029103

PLAN SCALE: 1"=20'
GRAPHIC SCALE IN FEET



DRAWN BY: PF
CHKD BY: AST

PROJ. NO.: 1980074-000.62
DWG. NO.: 16725W