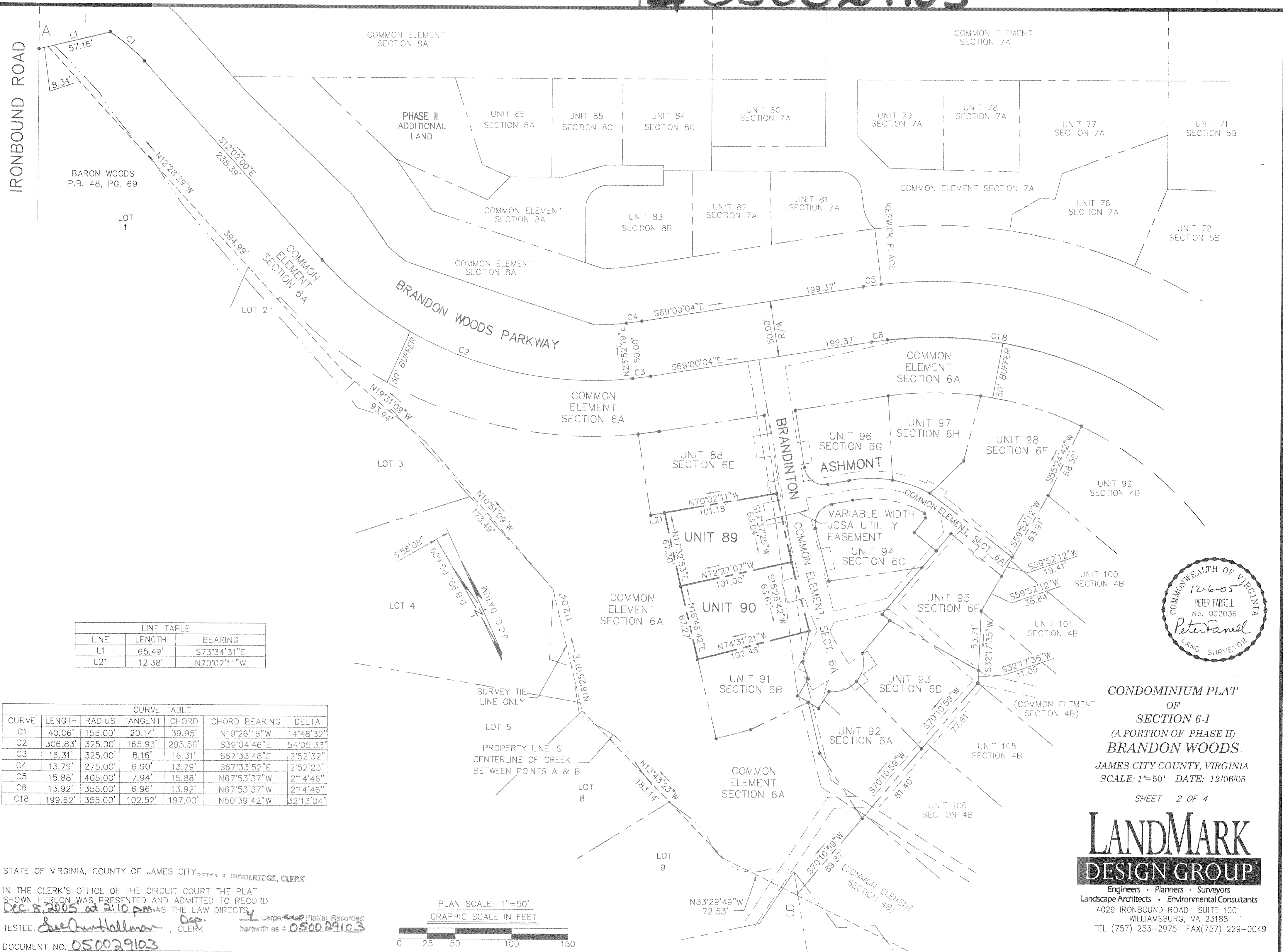


050029103



LINE TABLE		
LINE	LENGTH	BEARING
L1	65.49'	S73°34'31"E
L21	12.38'	N70°02'11"W

CURVE TABLE						
CURVE	LENGTH	RADIUS	TANGENT	CHORD	CHORD BEARING	DELTA
C1	40.06'	155.00'	20.14'	39.95'	N19°26'16"W	14°48'32"
C2	306.83'	325.00'	165.93'	295.56'	S39°04'46"E	54°05'33"
C3	16.31'	325.00'	8.16'	16.31'	S67°33'48"E	2°52'32"
C4	13.79'	275.00'	6.90'	13.79'	S67°33'52"E	2°52'23"
C5	15.88'	405.00'	7.94'	15.88'	N67°53'37"W	2°14'46"
C6	13.92'	355.00'	6.96'	13.92'	N67°53'37"W	2°14'46"
C18	199.62'	355.00'	102.52'	197.00'	N50°39'42"W	32°13'04"



CONDOMINIUM PLAT
OF
SECTION 6-I
(A PORTION OF PHASE II)
BRANDON WOODS.
JAMES CITY COUNTY, VIRGINIA
SCALE: 1"=50' DATE: 12/06/05
SHEET 2 OF 4

**LANDMARK
DESIGN GROUP**

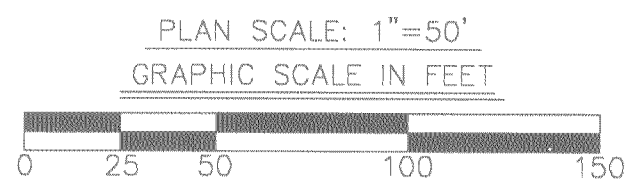
Engineers • Planners • Surveyors
Landscape Architects • Environmental Consultants
4029 IRONBOUND ROAD SUITE 100
WILLIAMSBURG, VA 23188
TEL (757) 253-2975 FAX(757) 229-0049

STATE OF VIRGINIA, COUNTY OF JAMES CITY, JEFFREY S. WOOLRIDGE, CLERK

IN THE CLERK'S OFFICE OF THE CIRCUIT COURT THE PLAT SHOWN HEREON WAS PRESENTED AND ADMITTED TO RECORD
Dec 8, 2005 at 2:10 pm AS THE LAW DIRECTS

TESTEE: *See [Signature]* Dep. CLERK
Large Plat(s) Recorded herewith as # 050029103

DOCUMENT NO. 050029103



DRAWN BY: PF
CHKD BY: AST
PROJ. NO.: 1980074-000.62
DWG. NO.: 16727W