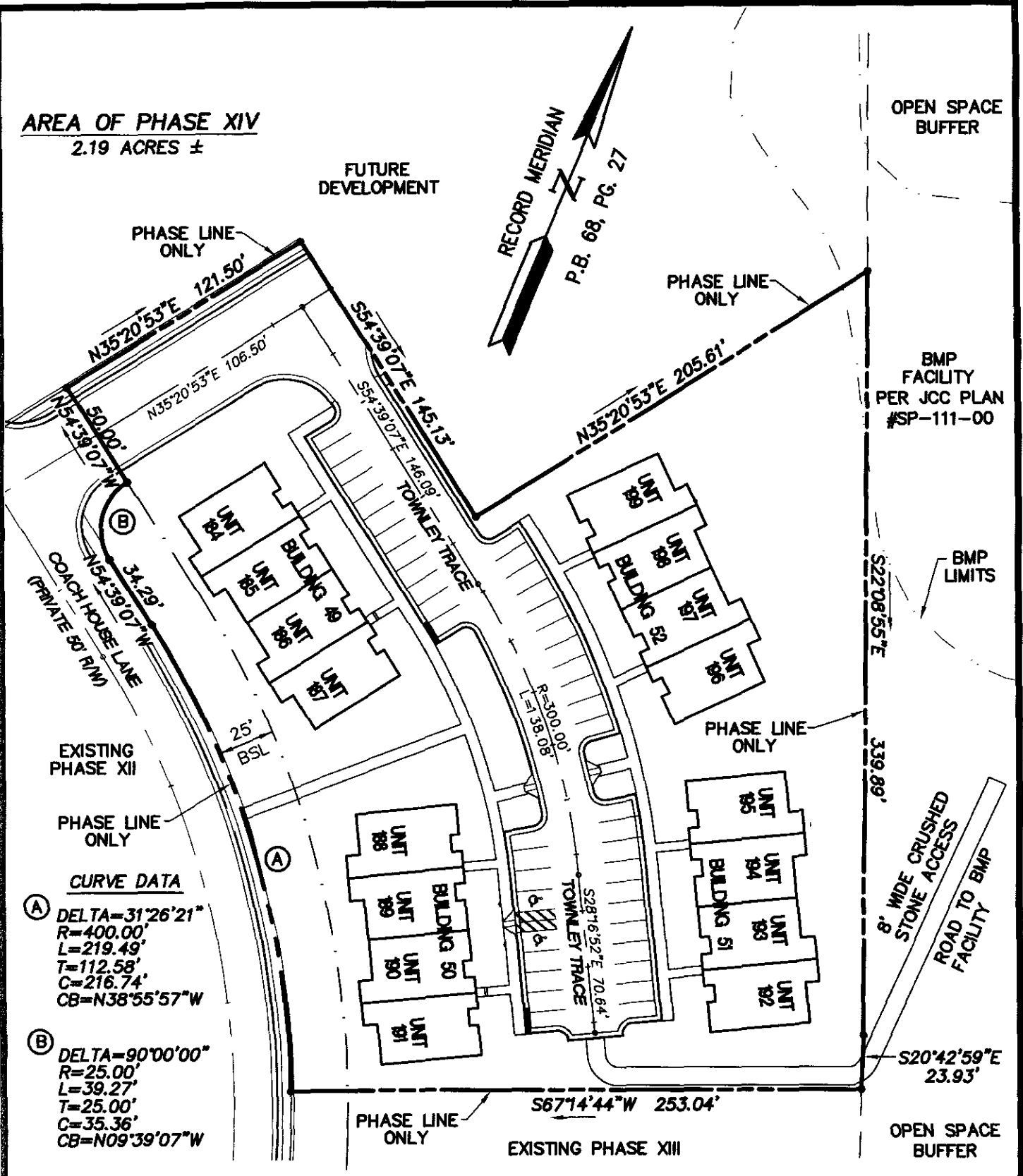


AREA OF PHASE XIV
2.19 ACRES ±



OPEN SPACE BUFFER

FUTURE DEVELOPMENT

PHASE LINE ONLY

PHASE LINE ONLY

BMP FACILITY PER JCC PLAN #SP-111-00

BMP LIMITS

PHASE LINE ONLY

EXISTING PHASE XII

PHASE LINE ONLY

CURVE DATA

(A) DELTA=31°26'21"
R=400.00'
L=219.49'
T=112.58'
C=216.74'
CB=N38°55'57"W

(B) DELTA=90°00'00"
R=25.00'
L=39.27'
T=25.00'
C=35.36'
CB=N09°39'07"W

PHASE LINE ONLY

EXISTING PHASE XIII

OPEN SPACE BUFFER

8' WIDE CRUSHED STONE ACCESS ROAD TO BMP FACILITY

TYPE OF TIMESHARE ESTATE: UDI
DAY: SUNDAY

PROPERTY IS A PORTION OF
TAX MAP PARCEL: (32-4) (1-26C)

UTILITY EASEMENTS ARE NOT SHOWN.

THIS PROPERTY LIES IN FLOOD ZONE "X", (AREAS DETERMINED TO BE OUTSIDE THE 500 YEAR FLOODPLAIN) PER F.I.R.M. 510202-00358 DATED 2/6/91.

NOTE: UNLESS OTHERWISE NOTED ALL LINES SHOWN ARE PHASE LINES AND NOT PROPERTY LINES.

NOTE: ALL BUILDINGS, CURB, PARKING AND SIDEWALKS SHOWN ARE PER A.E.S. SITE PLAN, DATED 2/20/02 REVISED 1/24/03.



ES Consulting Engineers
Engineers, Surveyors, Planners

5248 Olde Towne Road, Suite 1
Williamsburg, Virginia 23188
Ph. (757)-253-0040, Fax (757)-220-8994

EXHIBIT C

PLAT SHOWING PHASE XIV
WILLIAMSBURG PLANTATION TIMESHARE PROJECT

JAMES CITY COUNTY

VIRGINIA

Scale: 1"=60' Ref: NOTED Date: 4/14/04 Job No: 7555-7

01.15.03-08:54 7555PH14