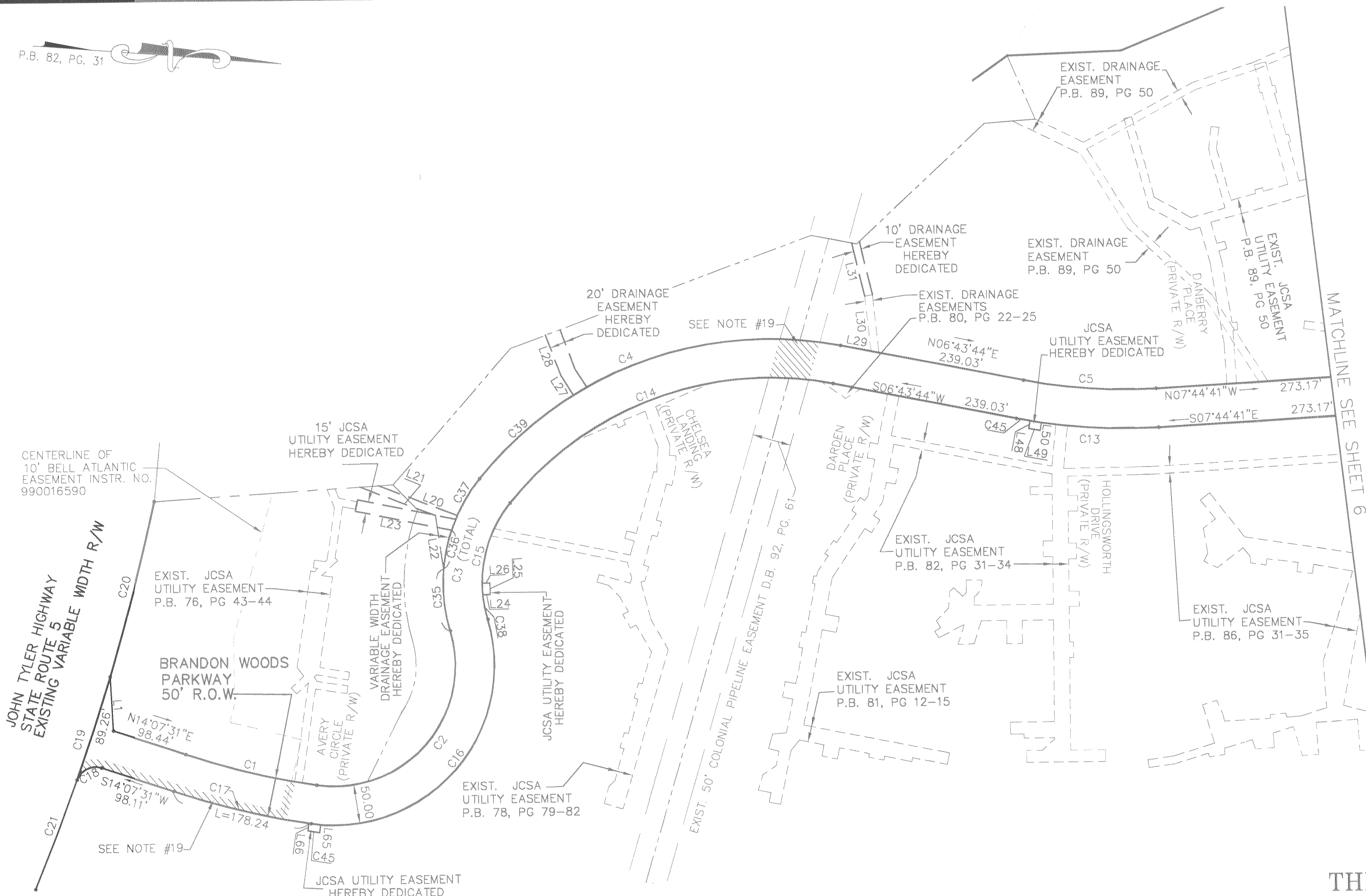


#050029043

P.B. 82, PG. 31

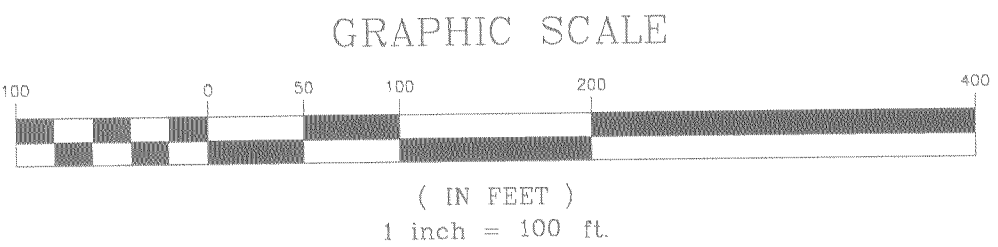


EASEMENT DETAILS

SUBDIVISION
 OF
 THE RIGHT OF WAY
 FOR
 BRANDON WOODS PARKWAY
 BEING THE PROPERTY OF
 BRANDON WOODS, LP
 BERKELEY DISTRICT, JAMES CITY COUNTY, VIRGINIA
 DATE: OCTOBER 15, 2003 SCALE: 1"=100'
 REVISED: NOV. 17, 2004
 REVISED: JAN. 17, 2005
 REVISED: AUG. 9, 2005
 SHEET 5 OF 6

City of Williamsburg & County of James City
 Circuit Court: This PLAT was recorded on
Dec. 8, 2005
 at 9:59 AM, P.B. PG
 DOCUMENT # 050029043
 BETSY B. WOOLRIDGE, CLERK
Betsy B. Woolridge Clerk

6 Large (or Plat) Plats Recorded
 herewith as # 050029043



LANDMARK
DESIGN GROUP
 Engineers • Planners • Surveyors
 Landscape Architects • Environmental Consultants

4029 Ironbound Road
 Suite 100
 Williamsburg, VA 23188
 Tel. (757) 253-2975
 Fax (757) 229-0049
 Email: lmdg@landmarkdg.com

5544 Greenwich Road
 Suite 200
 Virginia Beach, VA 23462
 Tel. (757) 473-2000
 Fax (757) 497-7933
 Email: lmdg@landmarkdg.com

1980074-000.64 BRANDON WOODS ROW-DEDICATION PLAT ROW-PLAT.dwg