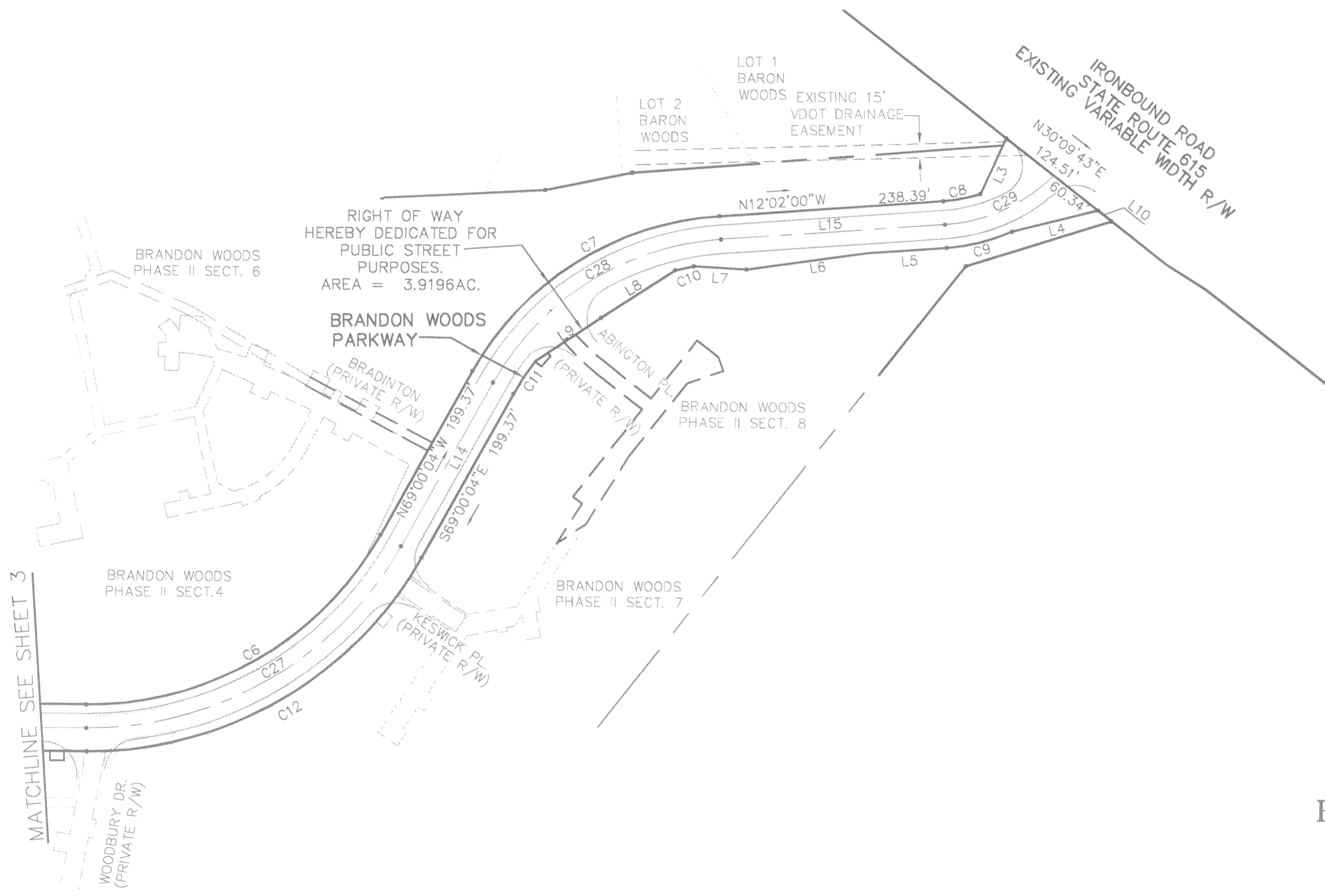
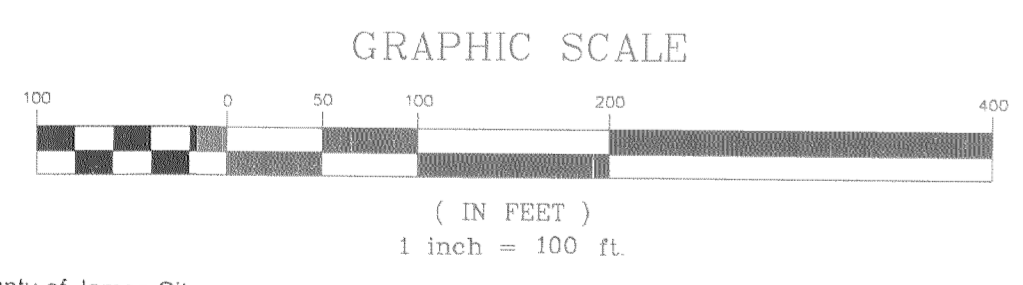


#050029043



SUBDIVISION
OF
THE RIGHT OF WAY
FOR
BRANDON WOODS PARKWAY
BEING THE PROPERTY OF
BRANDON WOODS, LP
BERKELEY DISTRICT, JAMES CITY COUNTY, VIRGINIA
DATE: OCTOBER 15, 2003 SCALE: 1"=100'
REVISED: NOV. 17, 2004
REVISED: JAN. 17, 2005
REVISED: AUG. 9, 2005
SHEET 4 OF 6



City of Williamsburg & County of James City
Circuit Court: This PLAT was recorded on
Dec 8, 2005
at 9:59 AM 11 PB 1 PG
DOCUMENT # 050029043
BETSY B. WOOLRIDGE, CLERK
Betsy B. Woolridge Clerk

6 Large 050029043 Plat(s) Recorded
herewith as # 050029043

SEE SHEETS 5 AND SIX
FOR EASEMENT DETAILS



LANDMARK
DESIGN GROUP
Engineers • Planners • Surveyors
Landscape Architects • Environmental Consultants

4029 Ironbound Road
Suite 100
Williamsburg, VA 23188
Tel. (757) 253-2975
Fax (757) 229-0049
Email: lmdg@landmarkdg.com

5544 Greenwich Road
Suite 200
Virginia Beach, VA 23462
Tel. (757) 473-2000
Fax (757) 497-7933
Email: lmdg@landmarkdg.com

1990074-000.54 BRANDON WOODS ROW-DEDICATION PLAT-ROW-PLAT.dwg