

#050027946

NOTE:
FOR A FURTHER DESCRIPTION OF THE EASEMENTS SEE
INSTRUMENT #050010506 AND INSTRUMENT #050010508.

NOTE:
COA - COMMERCIAL OWNERS ASSOCIATION EASEMENT
(NEW TOWN COMMERCIAL ASSOCIATION)

REMAINDER OF SECTION 3
NEW TOWN ASSOCIATES, LLC
4201 IRONBOUND ROAD
TAX MAP (39-1)(1-157)
LR# 000012573
LR# 030005069 (PLAT)
LR# 030027269 (PLAT)

STATE OF VIRGINIA

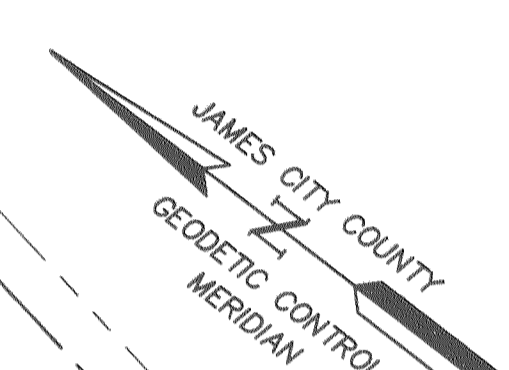
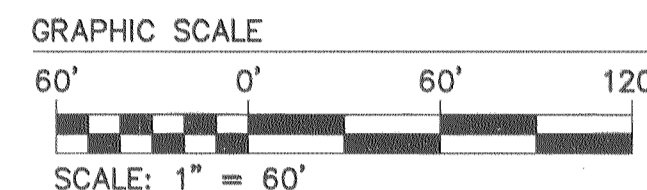
CITY OF WILLIAMSBURG & COUNTY OF JAMES CITY CIRCUIT COURT, THIS 23 DAY
OF November 2005.

THE PLAT SHOWN HEREON WAS PRESENTED AND ADMITTED TO THE RECORD AS THE
LAW DIRECTS. @ 10:39 AM/PM

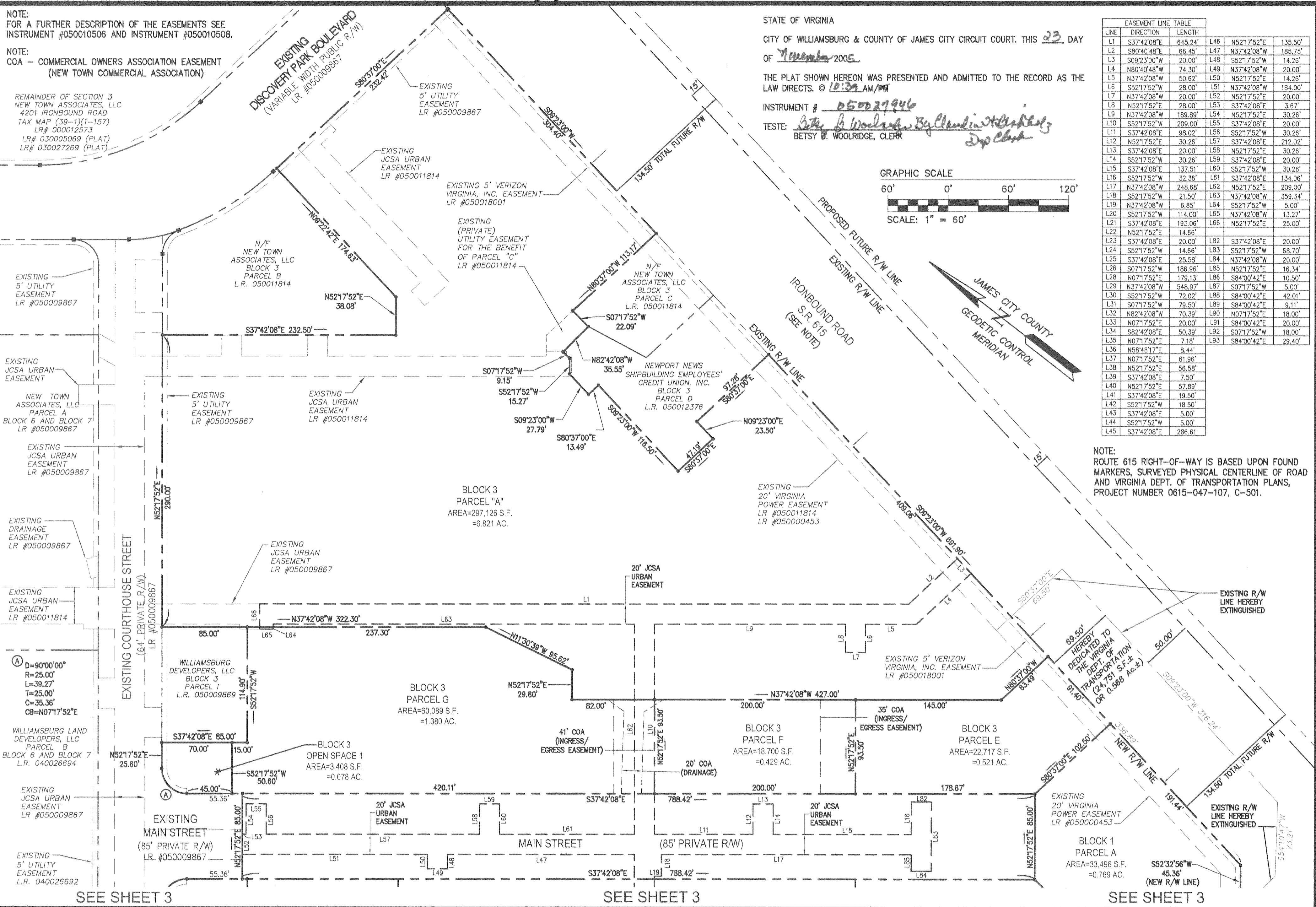
INSTRUMENT # 050027946

TESTE: Betsy B. Woolridge, By Claudia H. Binkley, Dep. Clerk
BETSY B. WOOLRIDGE, CLERK

EASEMENT LINE TABLE			
LINE	DIRECTION	LENGTH	
L1	S37°42'08"E	645.24'	L46 N52°17'52"E 135.50'
L2	S80°40'48"E	66.45'	L47 N37°42'08"W 185.75'
L3	S09°23'00"W	20.00'	L48 S52°17'52"W 14.26'
L4	N80°40'48"W	74.30'	L49 N37°42'08"W 20.00'
L5	N37°42'08"W	50.62'	L50 N52°17'52"E 14.26'
L6	S52°17'52"W	28.00'	L51 N37°42'08"W 184.00'
L7	N37°42'08"W	20.00'	L52 N52°17'52"E 20.00'
L8	N52°17'52"E	28.00'	L53 S37°42'08"E 3.67'
L9	N37°42'08"W	189.89'	L54 N52°17'52"E 30.26'
L10	S52°17'52"W	209.00'	L55 S37°42'08"E 20.00'
L11	S37°42'08"E	98.02'	L56 S52°17'52"W 30.26'
L12	N52°17'52"E	30.26'	L57 S37°42'08"E 212.02'
L13	S37°42'08"E	20.00'	L58 N52°17'52"E 30.26'
L14	S52°17'52"W	30.26'	L59 S37°42'08"E 20.00'
L15	S37°42'08"E	137.51'	L60 S52°17'52"W 30.26'
L16	S52°17'52"W	32.36'	L61 S37°42'08"E 134.06'
L17	N37°42'08"W	248.66'	L62 N52°17'52"E 209.00'
L18	S52°17'52"W	21.50'	L63 N37°42'08"W 359.34'
L19	N37°42'08"W	6.85'	L64 S52°17'52"E 5.00'
L20	S52°17'52"W	114.00'	L65 N37°42'08"W 13.22'
L21	S37°42'08"E	193.06'	L66 N52°17'52"E 25.00'
L22	N52°17'52"E	14.66'	
L23	S37°42'08"E	20.00'	L82 S37°42'08"E 20.00'
L24	S52°17'52"W	14.66'	L83 S52°17'52"W 68.70'
L25	S37°42'08"E	25.58'	L84 N37°42'08"W 20.00'
L26	S07°17'52"W	186.96'	L85 N52°17'52"E 16.34'
L28	N07°17'52"E	179.13'	L86 S84°00'42"E 10.50'
L29	N37°42'08"W	548.97'	L87 S07°17'52"W 5.00'
L30	S52°17'52"W	72.02'	L88 S84°00'42"E 42.01'
L31	S07°17'52"W	79.50'	L89 S84°00'42"E 9.11'
L32	N82°42'08"W	70.39'	L90 N07°17'52"E 18.00'
L33	N07°17'52"E	20.00'	L91 S84°00'42"E 20.00'
L34	S82°42'08"E	50.39'	L92 S07°17'52"W 18.00'
L35	N07°17'52"E	7.18'	L93 S84°00'42"E 29.40'
L36	N58°48'17"E	8.44'	
L37	N07°17'52"E	61.96'	
L38	N52°17'52"E	56.58'	
L39	S37°42'08"E	7.50'	
L40	N52°17'52"E	57.89'	
L41	S37°42'08"E	19.50'	
L42	S52°17'52"W	18.50'	
L43	S37°42'08"E	5.00'	
L44	S52°17'52"W	5.00'	
L45	S37°42'08"E	286.61'	



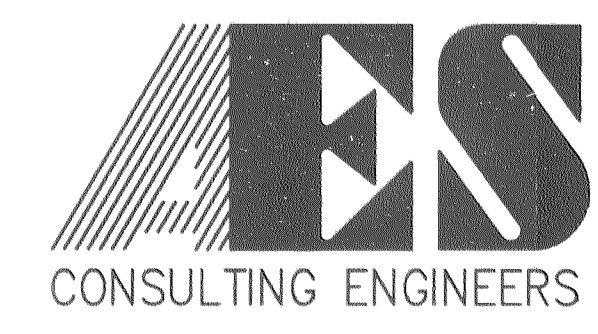
NOTE:
ROUTE 615 RIGHT-OF-WAY IS BASED UPON FOUND
MARKERS, SURVEYED PHYSICAL CENTERLINE OF ROAD
AND VIRGINIA DEPT. OF TRANSPORTATION PLANS,
PROJECT NUMBER 0615-047-107, C-501.



SEE SHEET 3

SEE SHEET 3

SEE SHEET 3



5248 Olde Towne Road, Suite 1
Williamsburg, Virginia 23188
(757) 253-0040
Fax (757) 220-8994

PLAT OF SUBDIVISION
SHOWING MAIN STREET, BLOCK 1 PARCEL A,
BLOCK 2 PARCELS A, H, I AND J
BLOCK 3 PARCELS A, E, F AND G
NEW TOWN
BEING A PORTION OF THE PROPERTY OWNED BY
NEW TOWN ASSOCIATES, LLC
BERKELEY DISTRICT COUNTY OF JAMES CITY VIRGINIA



No.	DATE	REVISION / COMMENT / NOTE	BY
5	11/03/05	REVISED PER JCSA COMMENTS	JFS
4	10/11/05	REVISED BLOCK 3 PARCEL G	JFS
3	9/22/05	ADDED NEW REFERENCES FOR RECORDING OF BLOCK 2	JFS
2	9/9/05	REVISED PARCELS A AND G OF BLOCK 3	JFS
1	8/15/05	REVISED PER COUNTY COMMENTS	JFS

Designed	Drawn
AES	JFS
Scale	Date
1"=60'	6/6/05
Project No.	
6632-E-21-5	
Drawing No.	
2 OF 3	