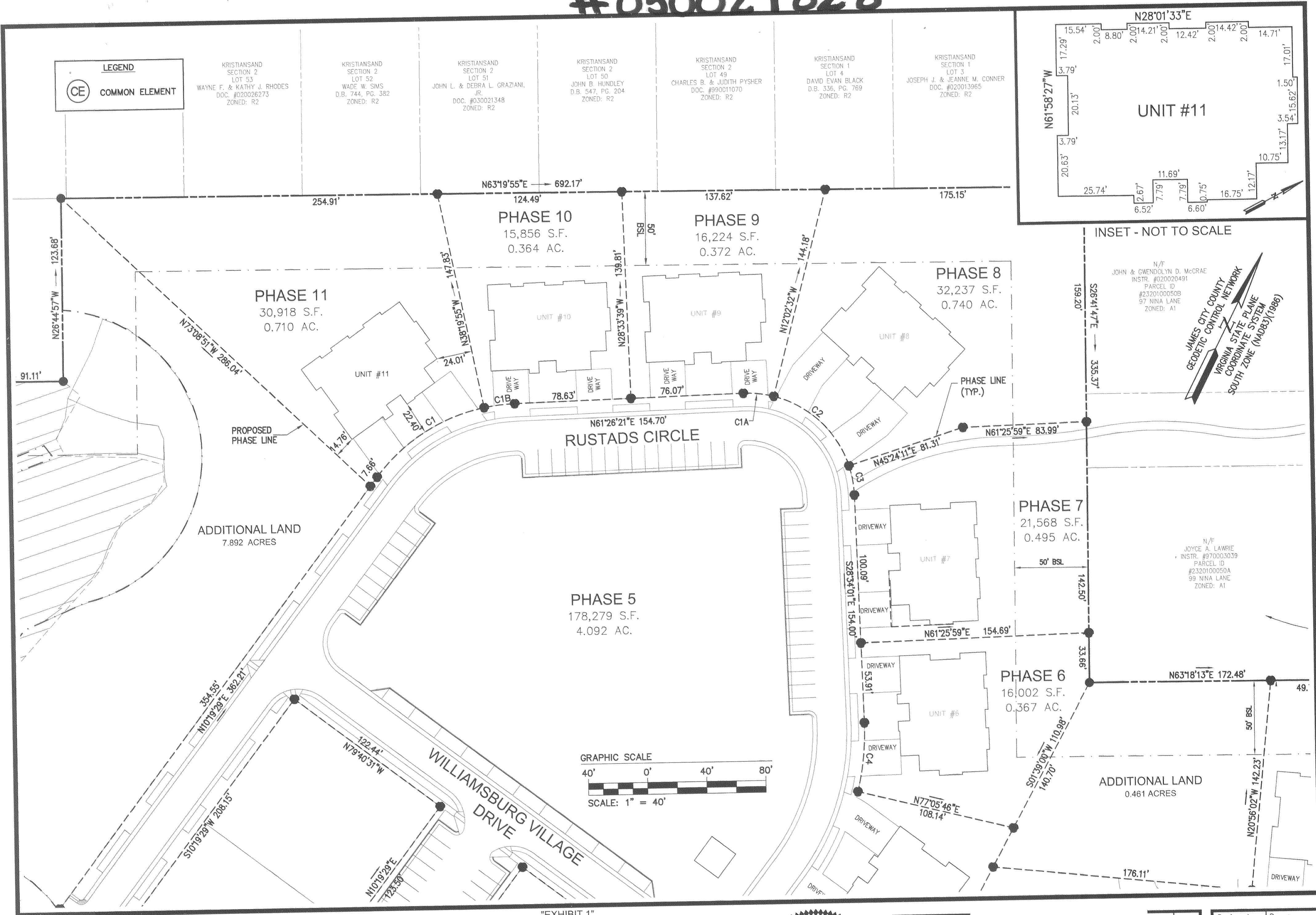
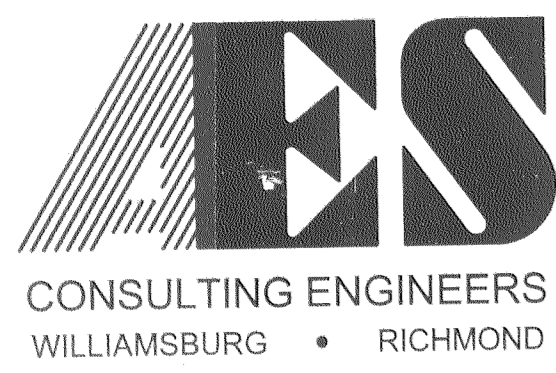


#050027828



S:\jobs\9286\02-Norge Condo Plans\dwg\Plats\Record\Phase 11\928602Condo Sh-002 PHASE11.dwg, 11/14/2005 3:36:26 PM, RDM



5248 Olde Towne Road, Suite 1
Williamsburg, Virginia 23188
(757) 253-0040
Fax (757) 220-8994

"EXHIBIT 1"
PLAT OF CONDOMINIUM
WILLIAMSBURG VILLAGE AT NORGE CONDOMINIUM
PHASE 11, UNIT #11
STONEHOUSE DISTRICT COUNTY OF JAMES CITY VIRGINIA



No.	DATE	REVISION / COMMENT / NOTE	BY

City of Williamsburg & County of James City
Circuit Court This PLAT was recorded on
22 November 2005
at *11:54* AM/PM PB = PG *7*
DOCUMENT # *050027828*
BETSY B. WOOLRIDGE, CLERK
Betsy B. Woolridge Clerk

Designed VMB/JAG	Drawn AWT/edw
Scale 1"=40'	Date 11/14/05
Project No. 9286-2	
Drawing No. 2 of 2	