

# #050021319

PLAT SHOWING PARCELS 1-A, 1-B, 6, 9 AND 11  
 BEING A SUBDIVISION OF THE PROPERTY OF  
 WILLIAMSBURG DEVELOPMENTS, INC.  
 AT THE  
 JAMES RIVER COMMERCE CENTER  
 ROBERTS DISTRICT, JAMES CITY COUNTY, VIRGINIA  
 DATE: 10/11/05 SCALE: 1"=100'  
 SHEET 3 OF 3

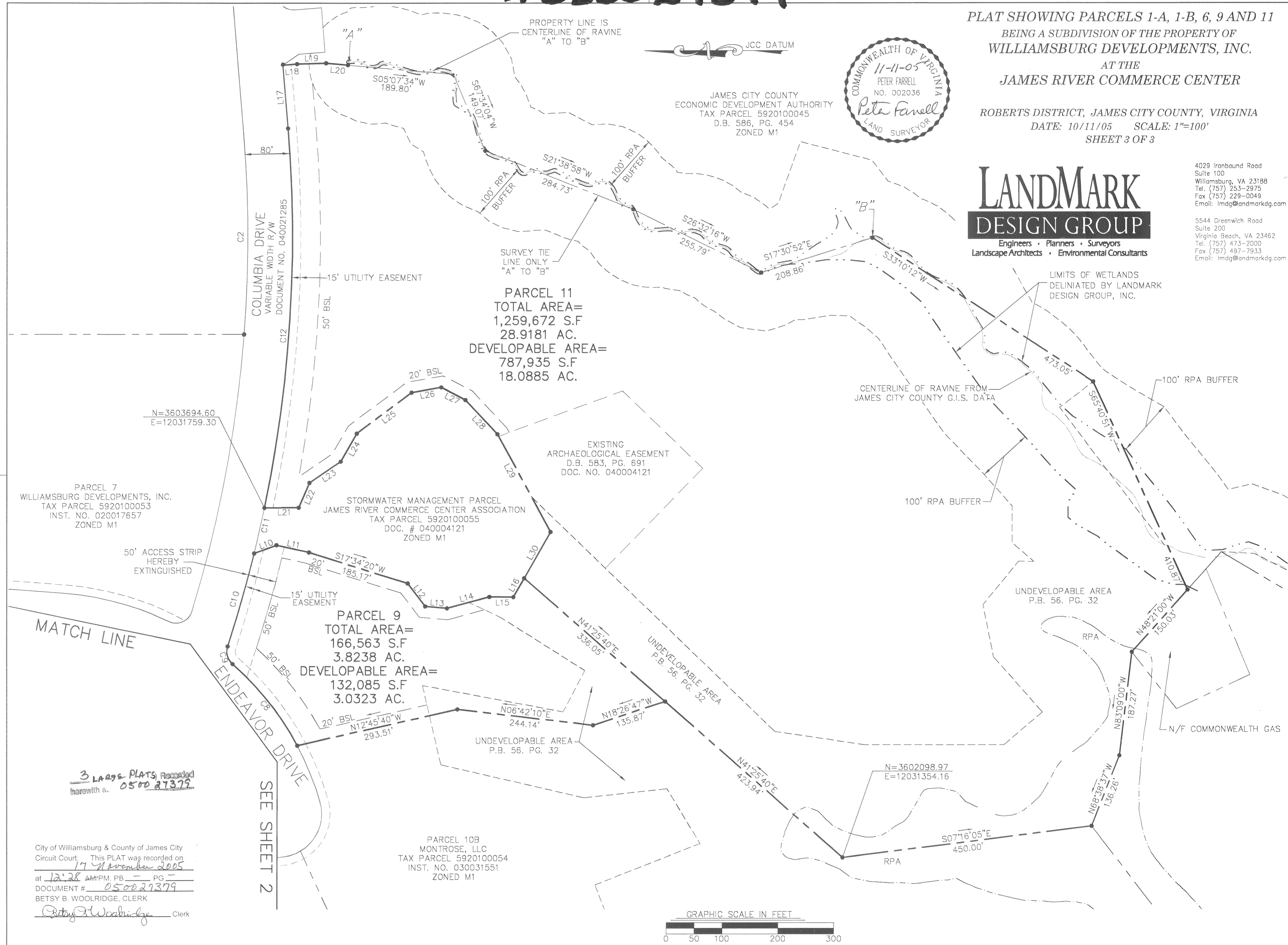


JAMES CITY COUNTY  
 ECONOMIC DEVELOPMENT AUTHORITY  
 TAX PARCEL 5920100045  
 D.B. 586, PG. 454  
 ZONED M1

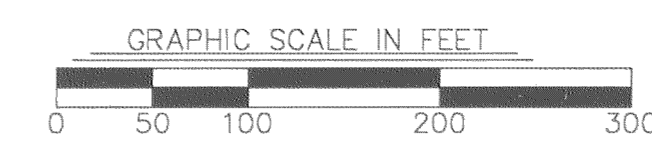
**LANDMARK  
 DESIGN GROUP**  
 Engineers • Planners • Surveyors  
 Landscape Architects • Environmental Consultants

4029 Ironbound Road  
 Suite 100  
 Williamsburg, VA 23188  
 Tel: (757) 253-2975  
 Fax: (757) 229-0049  
 Email: lmdg@landmarkdg.com

5544 Greenwich Road  
 Suite 200  
 Virginia Beach, VA 23462  
 Tel: (757) 473-2000  
 Fax: (757) 497-7933  
 Email: lmdg@landmarkdg.com



City of Williamsburg & County of James City  
 Circuit Court: This PLAT was recorded on  
 17 November 2005  
 at 12:28 AM/PM, PB \_\_\_\_\_ PG \_\_\_\_\_  
 DOCUMENT # 050021319  
 BETSY B. WOOLRIDGE, CLERK  
 Betsy B. Woolridge Clerk



DRAWN BY: PF  
 CHKD. BY: AST  
 PROJ. NO.: 1950016-000.52  
 DWG. NO.: 16173W

1950016-000.52(PLAT) Subs of Lots 1-6-9-11 VACC-11-6-9-11.dwg