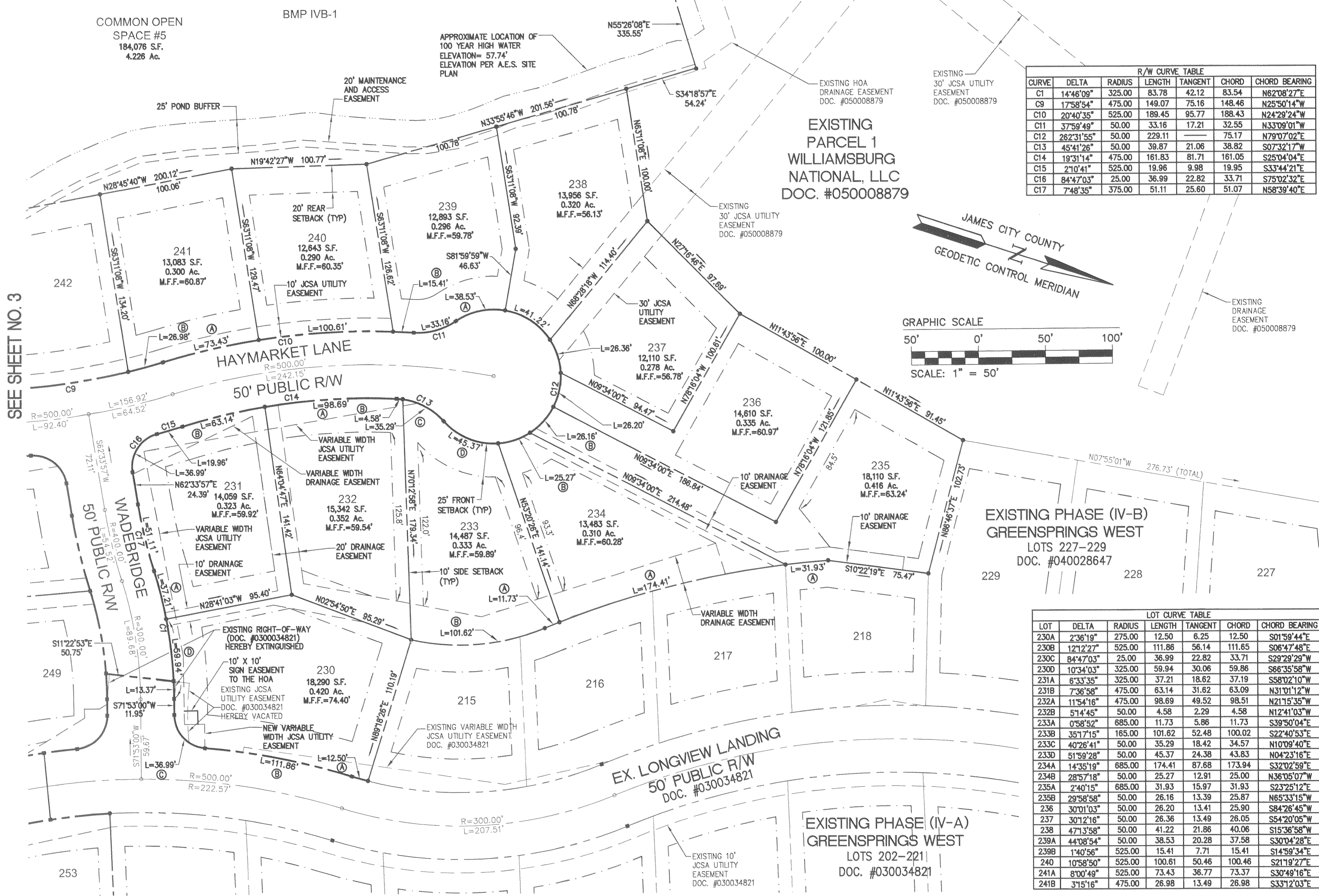


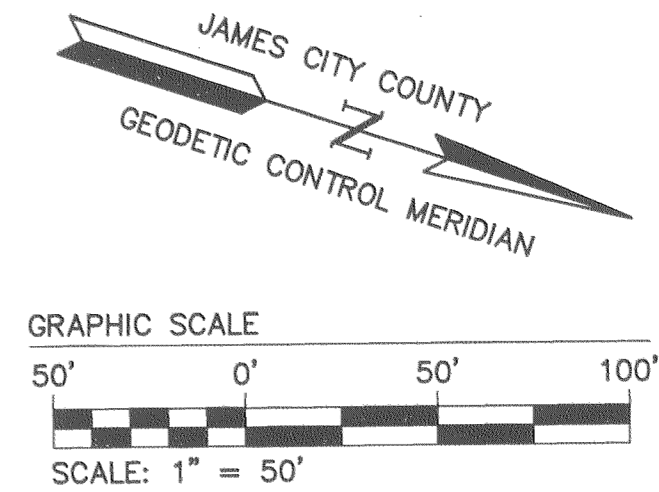
#050025426

SEE SHEET NO. 5

M.F.F. = MINIMUM FINISHED FLOOR

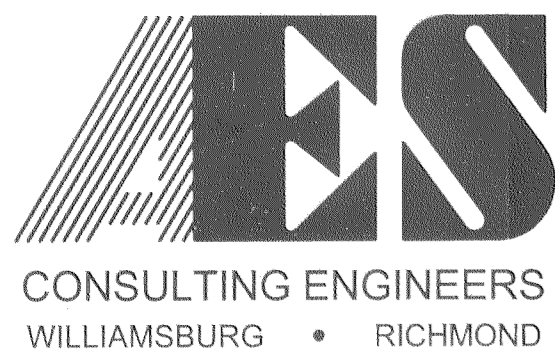


CURVE	DELTA	RADIUS	LENGTH	TANGENT	CHORD	CHORD BEARING
C1	14°46'09"	325.00	83.78	42.12	83.54	N62°08'27"E
C9	17°58'54"	475.00	149.07	75.16	148.46	N25°50'14"W
C10	20°40'35"	525.00	189.45	95.77	188.43	N24°29'24"W
C11	37°59'49"	50.00	33.16	17.21	32.55	N33°09'01"W
C12	262°31'55"	50.00	229.11	—	75.17	N79°07'02"E
C13	45°41'26"	50.00	39.87	21.06	38.82	S07°32'17"W
C14	19°31'14"	475.00	161.83	81.71	161.05	S25°04'04"E
C15	2°10'41"	525.00	19.96	9.98	19.95	S33°44'21"E
C16	84°47'03"	25.00	36.99	22.82	33.71	S75°02'32"E
C17	7°48'35"	375.00	51.11	25.60	51.07	N58°39'40"E



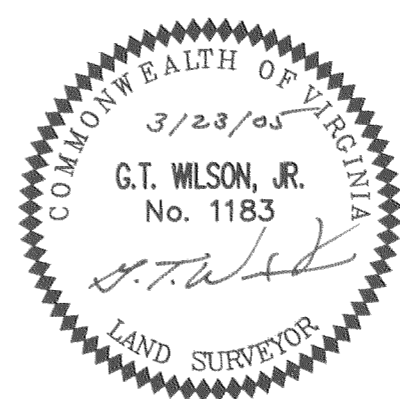
LOT	DELTA	RADIUS	LENGTH	TANGENT	CHORD	CHORD BEARING
230A	2°36'19"	275.00	12.50	6.25	12.50	S01°59'44"E
230B	12°12'27"	525.00	111.86	56.14	111.65	S06°47'48"E
230C	84°47'03"	25.00	36.99	22.82	33.71	S29°29'29"W
230D	10°34'03"	325.00	59.94	30.06	59.86	S66°35'58"W
231A	6°33'35"	325.00	37.21	18.62	37.19	S58°02'10"W
231B	7°36'58"	475.00	63.14	31.62	63.09	N31°01'12"W
232A	11°54'16"	475.00	98.69	49.52	98.51	N21°15'35"W
232B	51°44'45"	50.00	4.58	2.29	4.58	N12°41'03"W
233A	0°58'52"	685.00	11.73	5.86	11.73	S39°50'04"E
233B	35°17'15"	165.00	101.62	52.48	100.02	S22°40'53"E
233C	40°26'41"	50.00	35.29	18.42	34.57	N10°09'40"E
233D	51°59'28"	50.00	45.37	24.38	43.83	N04°23'16"E
234A	14°35'19"	685.00	174.41	87.68	173.94	S32°02'59"E
234B	28°57'18"	50.00	25.27	12.91	25.00	N36°05'07"W
235A	2°40'15"	685.00	31.93	15.97	31.93	S23°25'12"E
235B	29°58'58"	50.00	26.16	13.39	25.87	N65°33'15"W
236	30°01'03"	50.00	26.20	13.41	25.90	S84°26'45"W
237	30°12'16"	50.00	26.36	13.49	26.05	S54°20'05"W
238	47°13'58"	50.00	41.22	21.86	40.06	S15°36'58"W
239A	44°08'54"	50.00	38.53	20.28	37.58	S30°04'28"E
239B	1°40'56"	525.00	15.41	7.71	15.41	S14°59'34"E
240	10°58'50"	525.00	100.61	50.46	100.46	S21°19'27"E
241A	8°00'49"	525.00	73.43	36.77	73.37	S30°49'16"E
241B	3°15'16"	475.00	26.98	13.49	26.98	S33°12'03"E

THIS SHEET ADDRESSES LOTS 230-241 OF PHASE IV-B



5248 Olde Towne Road, Suite 1
Williamsburg, Virginia 23188
(757) 253-0040
Fax (757) 220-8994

PLAT OF SUBDIVISION
GREENSPRINGS WEST
PHASE IV-B & V
LOTS 230-291
BEING THE PROPERTY OF JAMESTOWN, L.L.C.
BERKELEY DISTRICT JAMES CITY COUNTY VIRGINIA



City of Williamsburg & County of James City
Circuit Court: This PLAT was recorded on
25 October 2005
at 12:32 A.M./P.M. PG. —
DOCUMENT # 050025426
BETSY B. WOOLRIDGE, CLERK
Betsy B. Woolridge Clerk

No.	DATE	REVISION / COMMENT / NOTE	BY
2	10/14/05	REVISED MINIMUM FINISHED FLOORS FOR LOTS 266-268, 290, 291 AND THE 25' BUFFER FOR BMP IV B-1	JFS
1	7/25/05	REVISED PER COUNTY COMMENTS	JFS

Designed AES	Drawn JFS
Scale NOTED	Date 3/23/05
Project No. 8656-13	
Drawing No. 2 OF 5	

S:\Jobs\8656\13-Greensprings West\Plats\8656\3p.dwg 10/17/2005 10:49:26 AM EST

Large (Small Plats) Recorded herewith 03 0