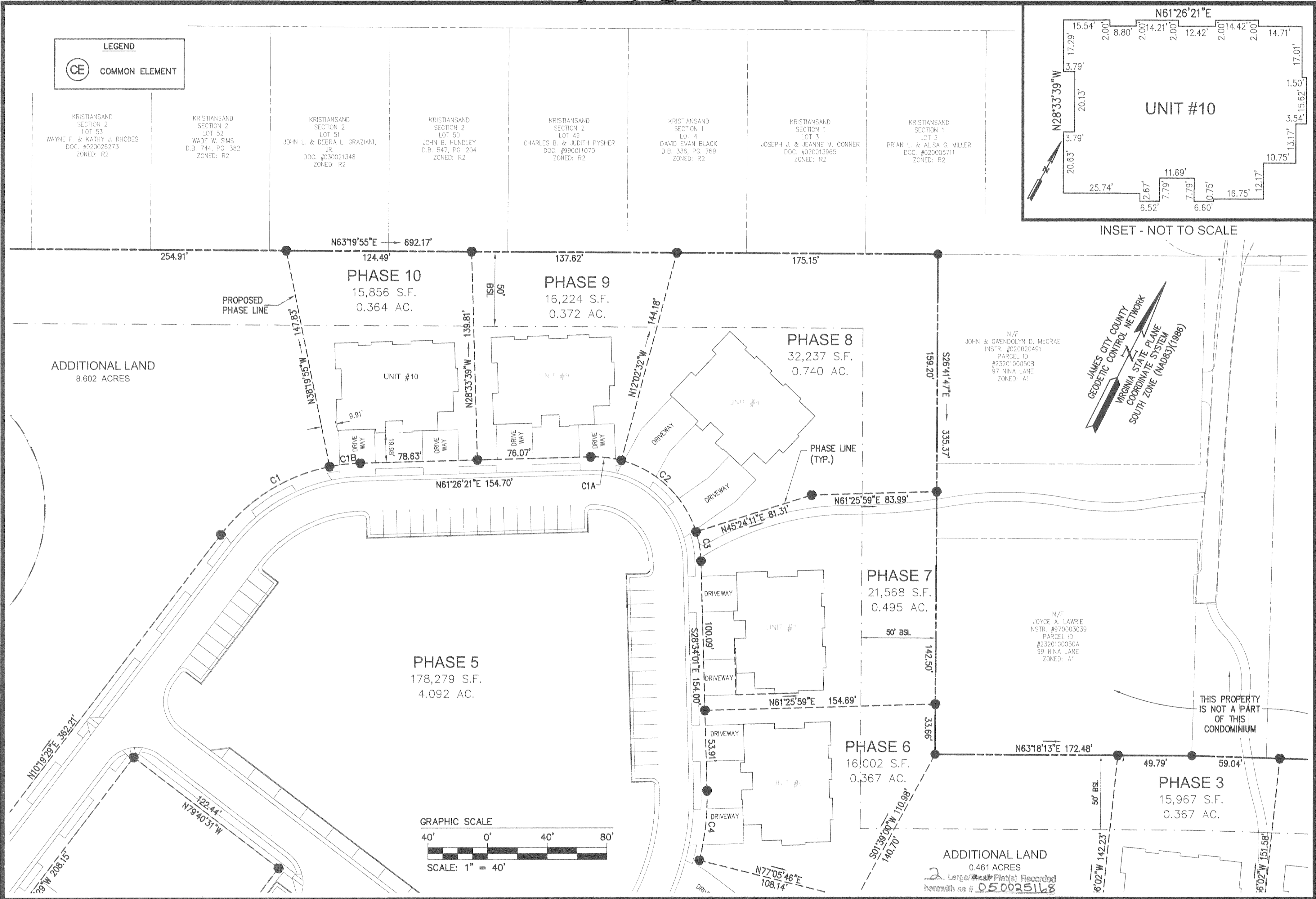
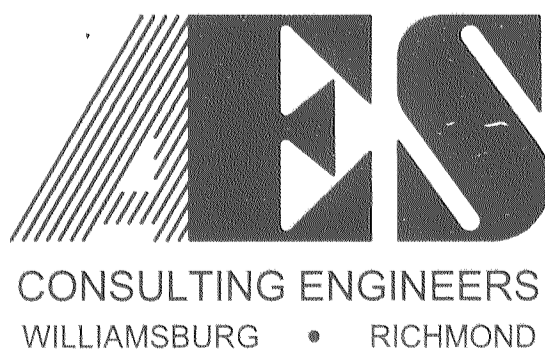


#050025168

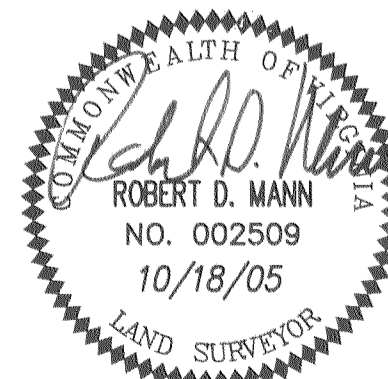


"EXHIBIT 1"



5248 Olde Towne Road, Suite 1
 Williamsburg, Virginia 23188
 (757) 253-0040
 Fax (757) 220-8994

PLAT OF CONDOMINIUM
WILLIAMSBURG VILLAGE AT NORGE CONDOMINIUM
 PHASE 10, UNIT #10
 STONEHOUSE DISTRICT COUNTY OF JAMES CITY VIRGINIA



City of Williamsburg & County of James City			
Circuit Court: This PLAT was recorded on			
10-21-2005			
at 2:00 PM, PG. 1			
DOCUMENT # 050025168			
BETSY B. WOOLRIDGE, CLERK			
<i>Betsy B. Woolridge</i> Clerk			
No.	DATE	REVISION / COMMENT / NOTE	BY

Designed	Drawn
VMB/JAG	AWT/eaw
Scale	Date
1"=40'	10/18/05
Project No.	
9286-2	
Drawing No.	
2 of 2	