

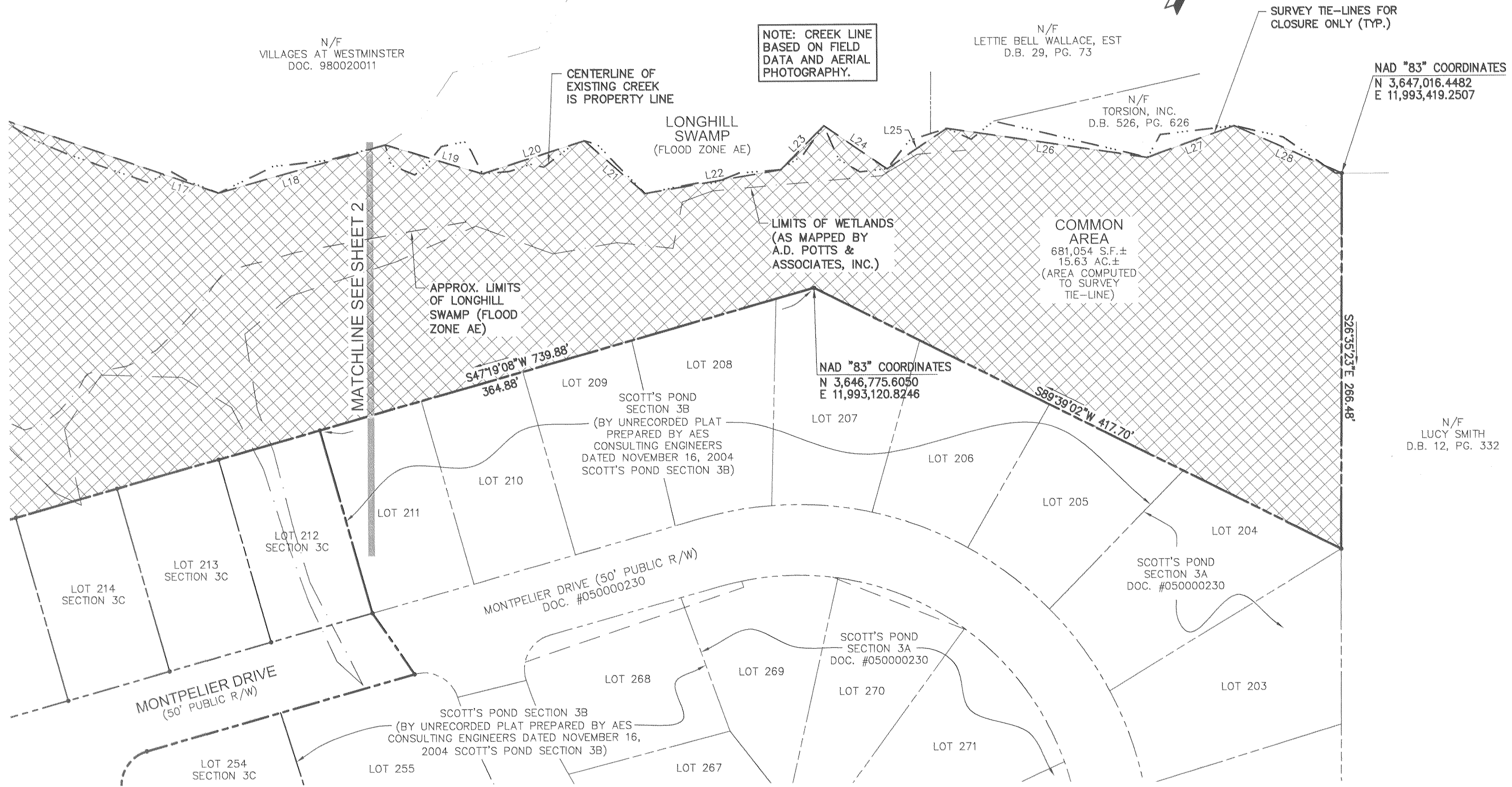
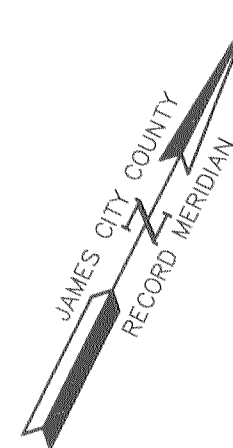
# #050025037

NOTE: DUE TO THE PROXIMITY OF THESE LOTS TO WETLANDS AND PERENNIAL STREAMS, INDIVIDUAL DEVELOPMENT ON THESE LOTS MAY BE SUBJECT TO THE PERFORMANCE STANDARDS ESTABLISHED THROUGH THE CHESAPEAKE BAY PRESERVATION ORDINANCE OF JAMES CITY COUNTY, ADOPTED NOVEMBER 25, 2003. OWNERS OF THESE LOTS ARE ADVISED TO CONSULT THIS ORDINANCE AND ALSO THE "RESOLUTION - CHESAPEAKE BAY PRESERVATION ORDINANCE TRANSITION - AMENDMENTS AND GRANDFATHERING/VESTING RULES", ALSO ADOPTED NOVEMBER 25, 2003.

NOTE: WETLANDS AND LAND WITHIN RESOURCE PROTECTION AREAS SHALL REMAIN IN A NATURAL UNDISTURBED STATE EXCEPT FOR THOSE ACTIVITIES PERMITTED BY SECTION 23-7(c) OF THE JAMES CITY COUNTY CODE. (SEE SECTION 19-29(h) OF THE SUBDIVISION ORDINANCE).

NOTE: CREEK LINE BASED ON FIELD DATA AND AERIAL PHOTOGRAPHY.

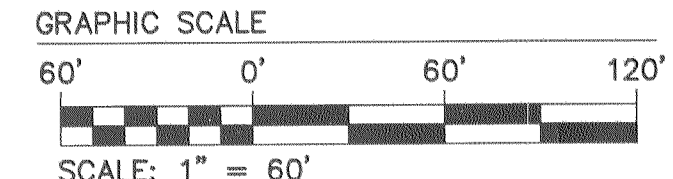
SURVEY TIE-LINE LINE TABLE		
LINE	DIRECTION	LENGTH
L19	N79°51'27"E	72.06'
L20	N45°29'49"E	76.06'
L21	S75°38'33"E	57.07'
L22	N53°20'22"E	97.83'
L23	N17°46'26"E	43.50'
L24	S82°22'15"E	54.13'
L25	N29°15'12"E	51.17'
L26	N71°35'42"E	144.23'
L27	N43°13'23"E	65.53'
L28	N87°07'45"E	83.55'



NAD "83" COORDINATES  
N 3,647,016.4482  
E 11,993,419.2507

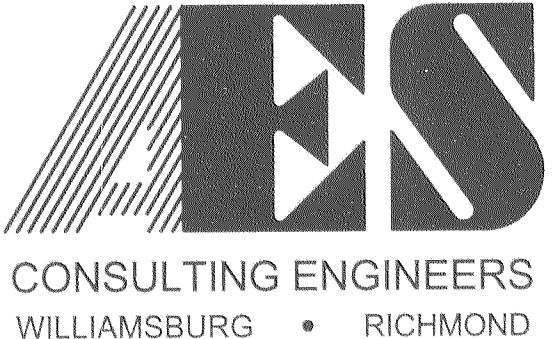
NAD "83" COORDINATES  
N 3,646,775.6050  
E 11,993,120.8246

N/F LUCY SMITH  
D.B. 12, PG. 332



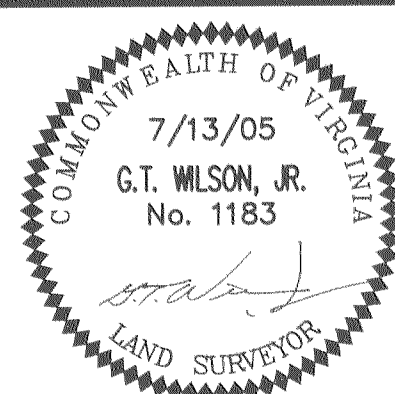
4 Large ~~area~~ Plat(s) Recorded herewith as # 050025037

AREA OF NATURAL OPEN SPACE CONSERVATION EASEMENT TO BE DEDICATED TO JAMES CITY COUNTY (458,749 SF; 10.53 AC)



5248 Olde Towne Road, Suite 1  
Williamsburg, Virginia 23188  
(757) 253-0040  
Fax (757) 220-8994

PLAT OF SUBDIVISION  
**SCOTT'S POND**  
SECTION 3C  
LOTS 212-254  
POWhatan DISTRICT JAMES CITY COUNTY VIRGINIA



City of Williamsburg & County of James City Circuit Court: This PLAT was recorded on 10-19-2005 at 3:56 PM, PG. 10	
DOCUMENT # 050025037	
BETSY B. WOOLRIDGE, CLERK	
Clerk	
1	8/23/05 REVISED PER JCC COMMENT LETTER DATED 8/19/05
No.	DATE REVISION / COMMENT / NOTE

Designed VMB/JAG	Drawn AWT
Scale 1"=60'	Date 7/13/05
Project No. 9178	
Drawing No. 4 of 4	