

#050025037

LINE	DIRECTION	LENGTH
L29	N49°31'20"E	29.65'
L30	S87°18'51"E	29.43'
L31	S59°36'31"E	19.89'
L32	S79°26'50"E	55.95'
L33	N63°19'22"E	75.96'
L34	N60°40'05"E	46.87'
L35	S81°30'03"E	74.13'
L36	S46°34'03"E	98.36'
L37	N72°21'14"E	150.02'
L38	N37°08'24"E	62.26'
L39	N06°53'11"W	40.42'
L40	N66°50'29"E	23.83'
L41	S69°10'50"E	17.09'
L42	S34°13'46"E	11.11'

LINE	DIRECTION	LENGTH
L1	N20°54'16"E	138.33'
L2	N63°33'02"E	147.11'
L3	N45°01'51"E	198.55'
L4	N79°08'47"E	155.50'
L5	N13°16'29"E	52.27'
L6	N85°38'02"E	82.55'
L7	N37°28'31"E	322.01'
L8	N18°09'49"W	200.51'
L9	N40°50'39"E	122.00'

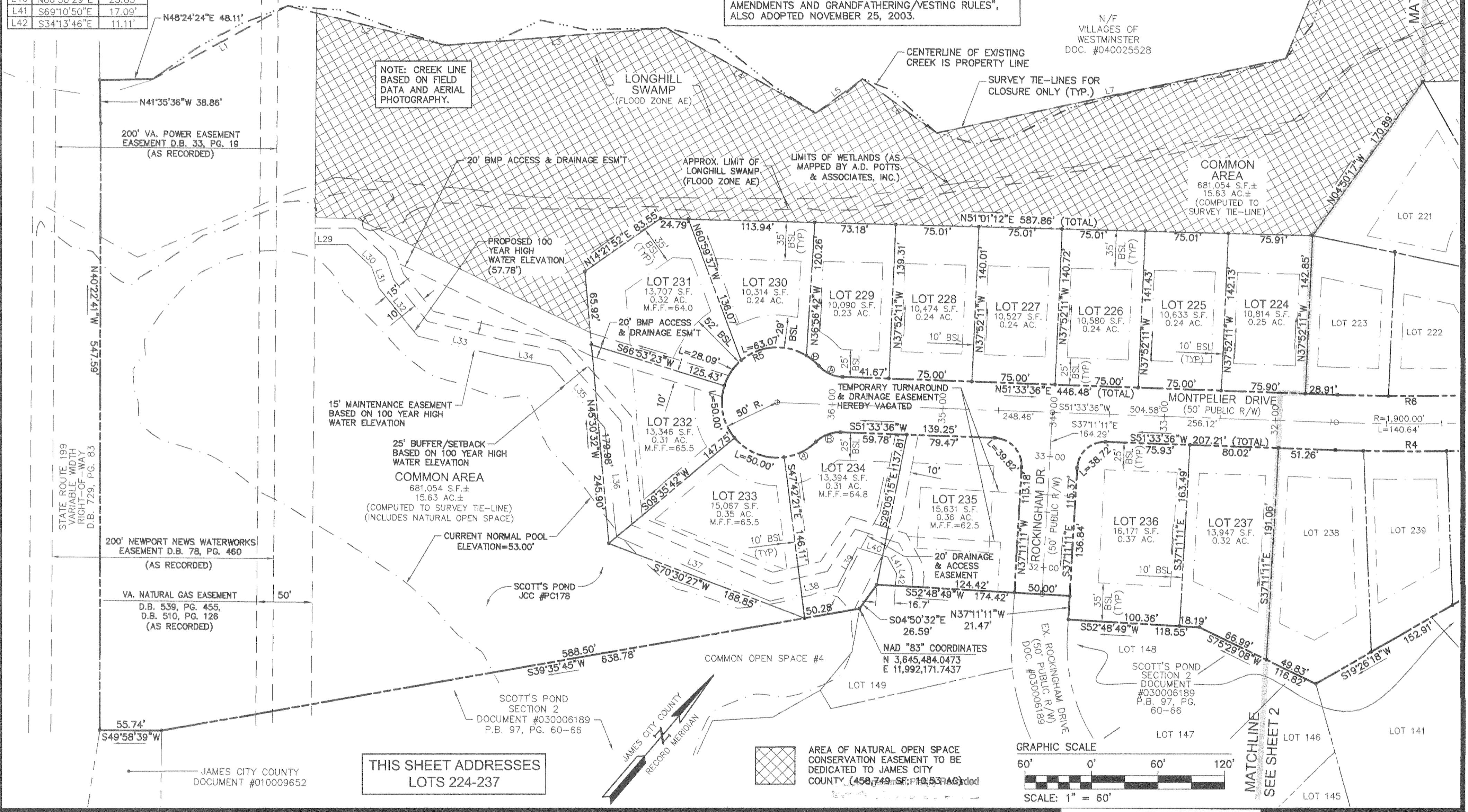
LOT	DELTA	RADIUS	ARC	TANGENT	CHORD	CHORD BEARING
229A	46°34'03"	30.00	24.38	12.91	23.72	S74°50'38"W
229B	16°46'16"	50.00	14.64	7.37	14.58	S89°44'31"W
230	72°16'35"	50.00	63.07	36.51	58.97	S45°13'05"W
231	32°11'37"	50.00	28.10	14.43	27.73	S07°01'00"E
232	57°17'45"	50.00	50.00	27.32	47.94	S51°45'41"E
233	57°17'45"	50.00	50.00	27.32	47.94	N70°56'34"E
234A	37°18'09"	50.00	32.55	16.88	31.98	S23°38'38"W
234B	46°34'03"	30.00	24.38	12.91	23.72	S28°16'35"W
235	91°15'13"	25.00	39.82	25.55	35.74	N82°48'48"W
236	88°44'47"	25.00	38.72	24.46	34.97	S07°11'12"W

NO.	DELTA	RADIUS	LENGTH	TANGENT	CHORD	CH. BEARING
R5	27°3'08"06"	50.00	238.35	-	68.75	N38°26'24"W

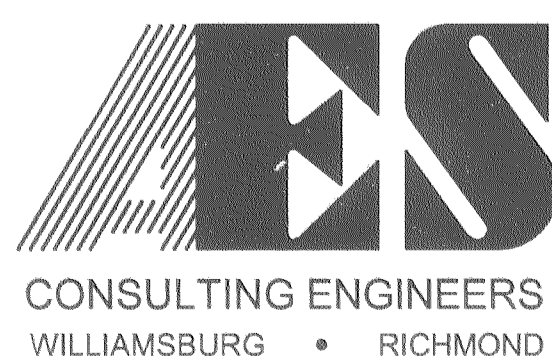
NAD "83" COORDINATES
 N 3,646,301.7100
 E 11,992,079.3499

NOTE: DUE TO THE PROXIMITY OF THESE LOTS TO WETLANDS AND PERENNIAL STREAMS, INDIVIDUAL DEVELOPMENT ON THESE LOTS MAY BE SUBJECT TO THE PERFORMANCE STANDARDS ESTABLISHED THROUGH THE CHESAPEAKE BAY PRESERVATION ORDINANCE OF JAMES CITY COUNTY, ADOPTED NOVEMBER 25, 2003. OWNERS OF THESE LOTS ARE ADVISED TO CONSULT THIS ORDINANCE AND ALSO THE "RESOLUTION - CHESAPEAKE BAY PRESERVATION ORDINANCE TRANSITION - AMENDMENTS AND GRANDFATHERING/VESTING RULES", ALSO ADOPTED NOVEMBER 25, 2003.

NOTE: WETLANDS AND LAND WITHIN RESOURCE PROTECTION AREAS SHALL REMAIN IN A NATURAL UNDISTURBED STATE EXCEPT FOR THOSE ACTIVITIES PERMITTED BY SECTION 23-7(c) OF THE JAMES CITY COUNTY CODE. (SEE SECTION 19-29(h) OF THE SUBDIVISION ORDINANCE).



THIS SHEET ADDRESSES
 LOTS 224-237

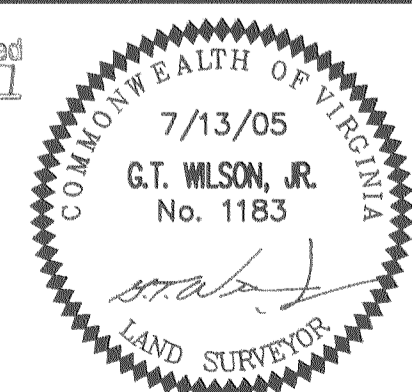


5248 Olde Towne Road, Suite 1
 Williamsburg, Virginia 23188
 (757) 253-0040
 Fax (757) 220-8994

PLAT OF SUBDIVISION herewith as # 050025037

SCOTT'S POND
 SECTION 3C
 LOTS 212 - 254

POWATAN DISTRICT JAMES CITY COUNTY VIRGINIA



City of Williamsburg & County of James City Circuit Court: This PLAT was recorded on 10-19-2005	
at 3:56 PM, PG. 1	DOCUMENT # 050025037
BETSY B. WOOLRIDGE, CLERK	
Betsy B. Woolridge Clerk	
1 8/23/05	REVISED PER JCC COMMENT LETTER DATED 8/19/05
No.	DATE REVISION / COMMENT / NOTE BY

Designed VMB/JAG	Drawn AWT
Scale 1"=60'	Date 7/13/05
Project No. 9178	
Drawing No. 3 of 4	