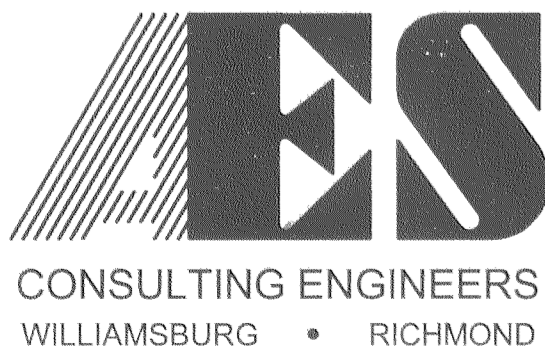
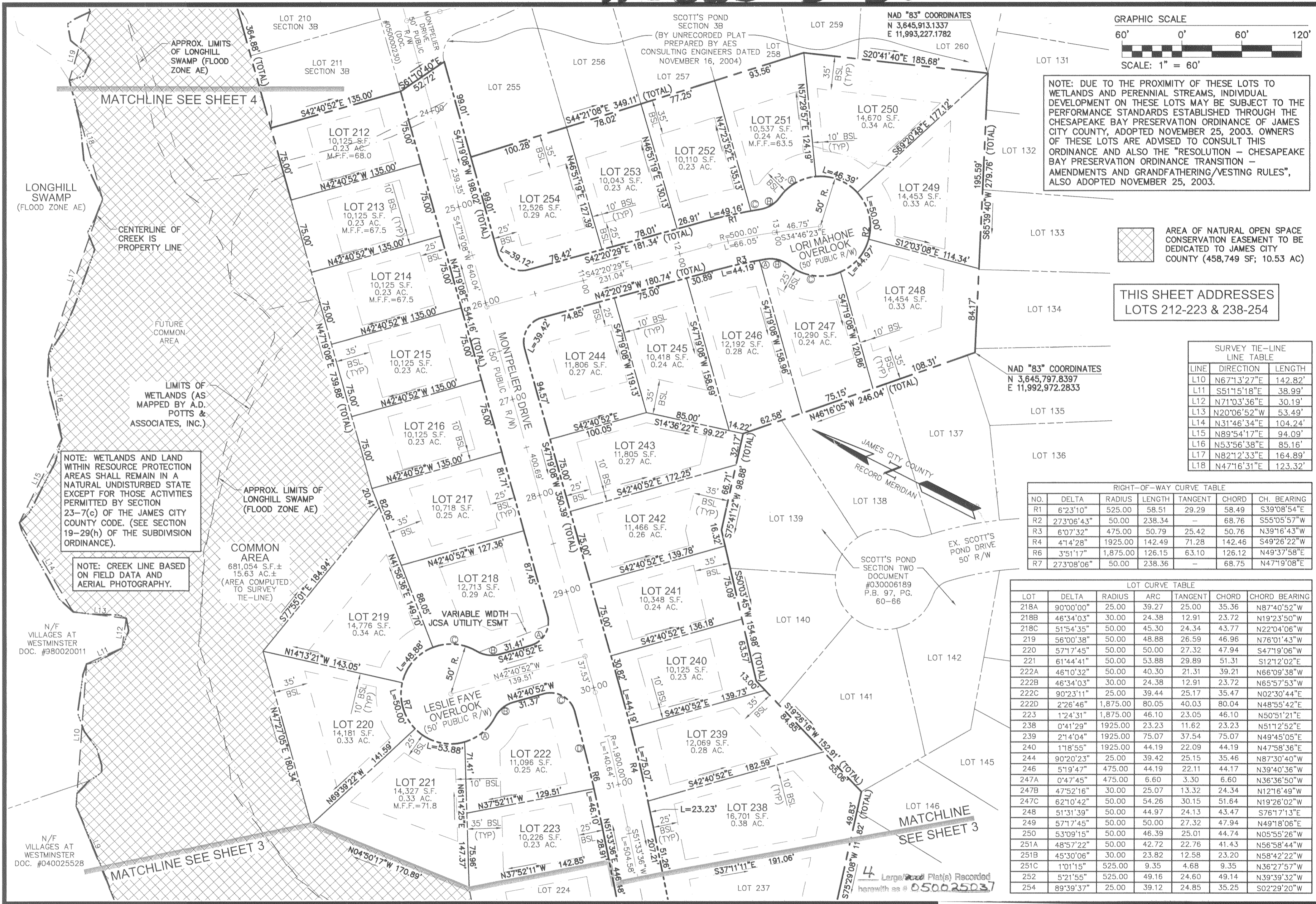


# #050025037



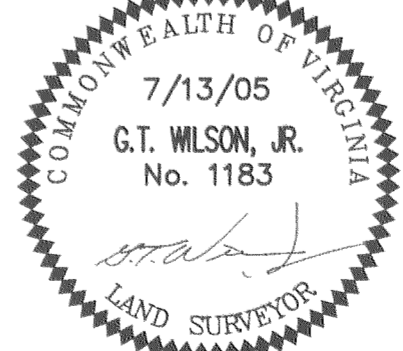
5248 Olde Towne Road, Suite 1  
Williamsburg, Virginia 23188  
(757) 253-0040  
Fax (757) 220-8994

PLAT OF SUBDIVISION

## SCOTT'S POND

SECTION 3C  
LOTS 212-254

POWhatan DISTRICT      JAMES CITY COUNTY      VIRGINIA



City of Williamsburg & County of James City  
Circuit Court: This PLAT was recorded on  
10-19-2005  
at 3:56 PM, PG. 4  
DOCUMENT # 050025037  
BETSY B. WOOLRIDGE, CLERK  
*Betsy Woolridge* Clerk

No.	DATE	REVISION / COMMENT / NOTE	BY
1	8/23/05	REVISED PER JCC COMMENT LETTER DATED 8/19/05	BY

Designed VMB/JAG	Drawn AWT
Scale 1"=60'	Date 7/13/05
Project No. 9178	
Drawing No. 2 of 4	