

#050025017

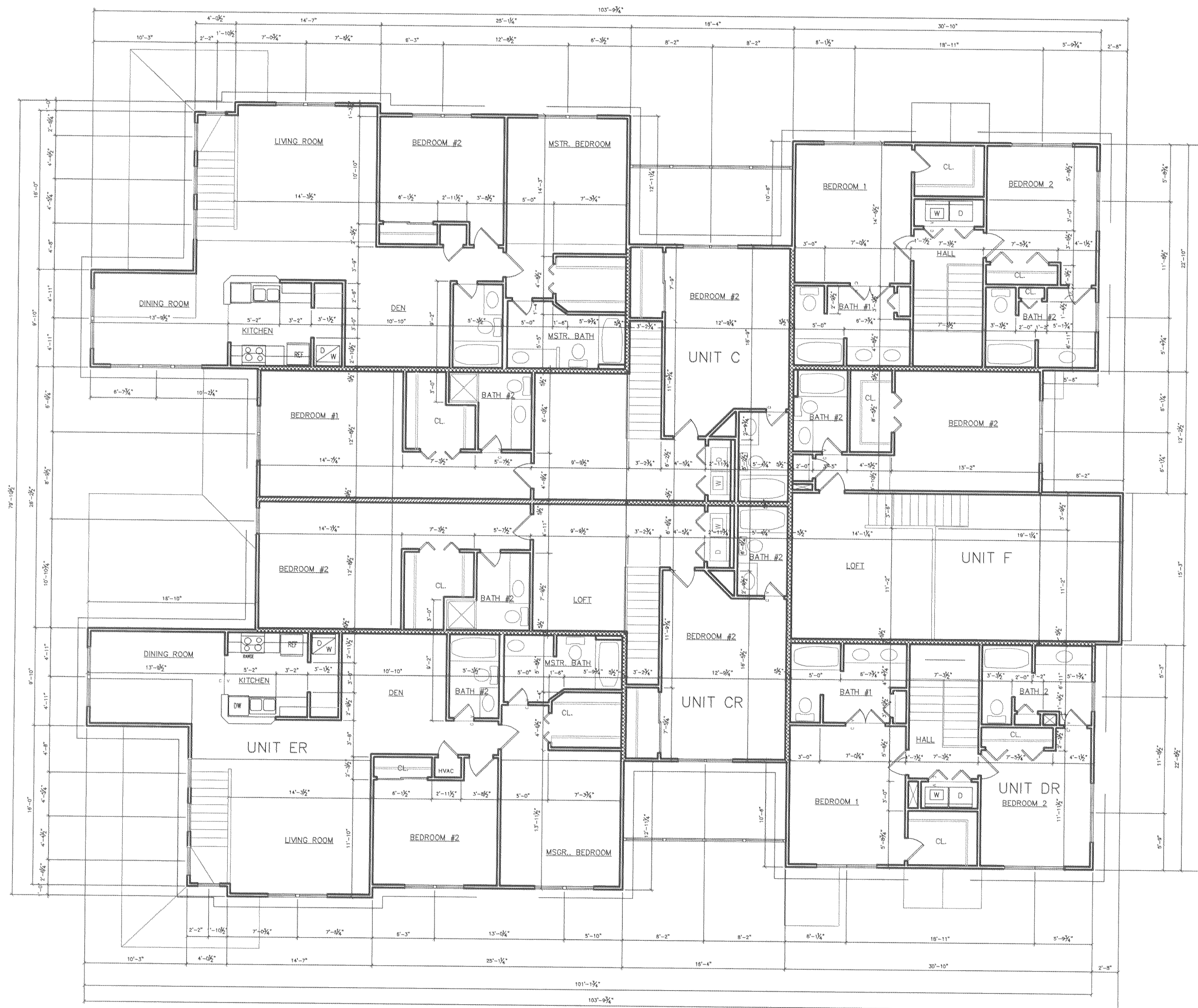
BRAEMAR CREEK
AT GREENSPRINGS PLANTATION
A CONDOMINIUM
LOCATED IN THE BERKELEY DISTRICT
JAMES CITY COUNTY, VIRGINIA

DATE: 7/28/05 SCALE: 1/8" = 1' JOB# 05-548

SHEET 3 OF 4

LandTech
Resources, Inc.
Surveying • Engineering • GPS

5810-F Mooretown Road, Williamsburg, VA 23188
Phone: (757) 565-1677 Fax: (757) 565-0782
web: landtechresources.com



SECOND FLOOR PLAN
1/8" = 1'

4 Large/Small Plat(s) Recorded
here with as #. 050025017

City of Williamsburg & County of James City
Circuit Court: This PLAT was recorded on
10-19-2005
at 12:04 PM PG
DOCUMENT # 050025017
BETSY B. WOOLRIDGE, CLERK
Betsy B. Woolridge Clerk