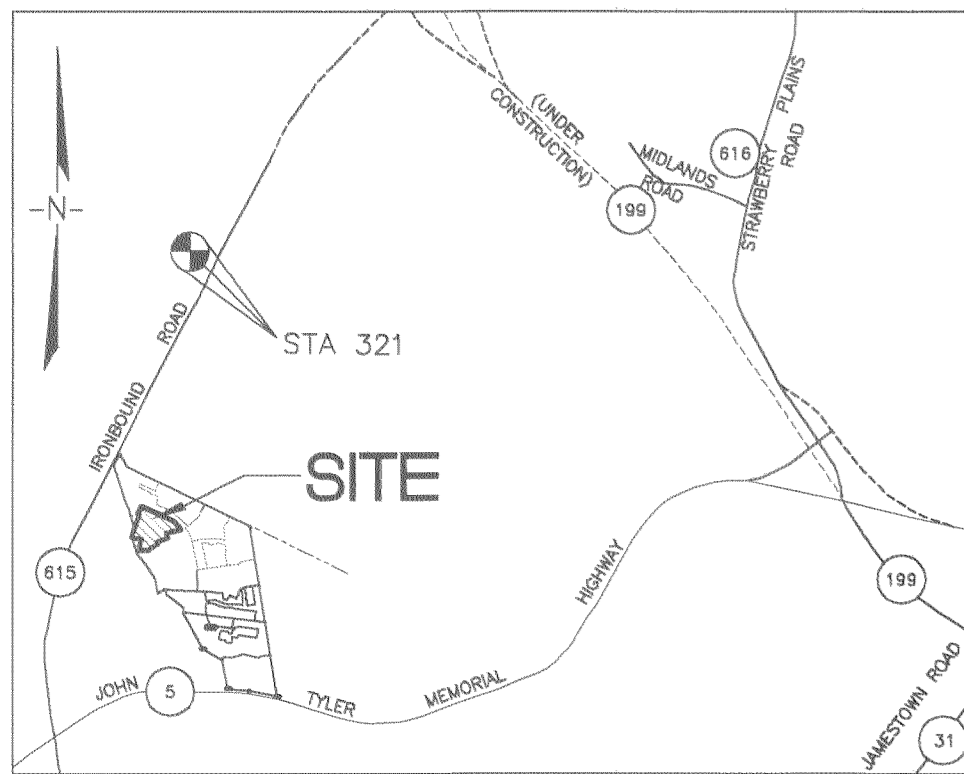
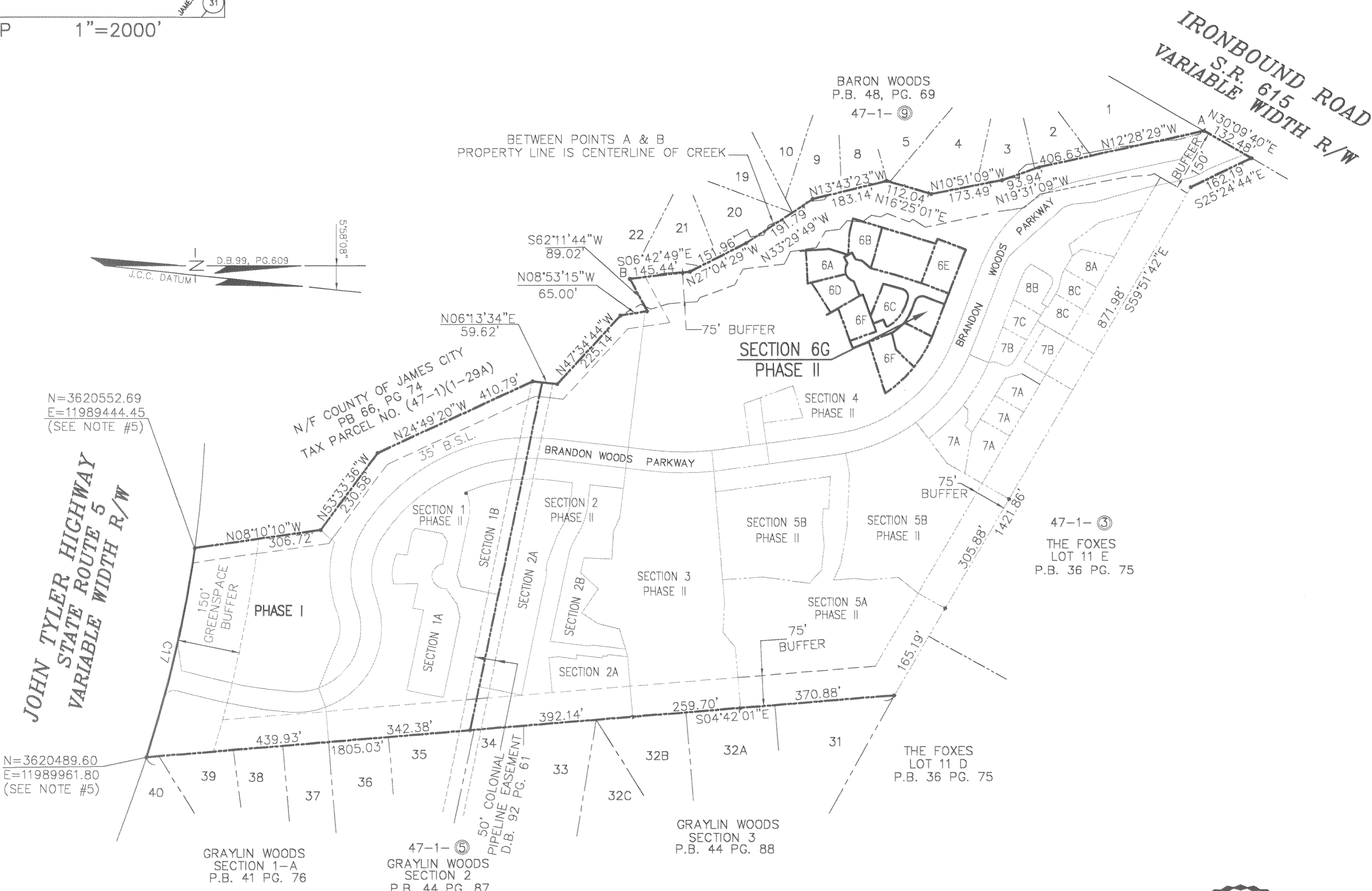


#050024432



VICINITY MAP 1"=2000'



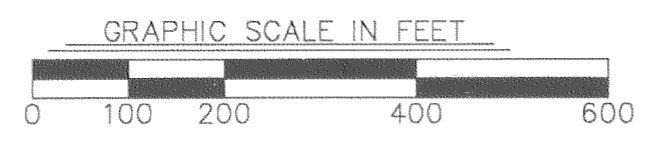
N=3620552.69
E=11989444.45
(SEE NOTE #5)

JOHN TYLER HIGHWAY
STATE ROUTE 5
VARIABLE WIDTH R/W

N=3620489.60
E=11989961.80
(SEE NOTE #5)

STATE OF VIRGINIA, COUNTY OF JAMES CITY
IN THE CLERK'S OFFICE OF THE CIRCUIT COURT THE PLAT
SHOWN HEREON WAS PRESENTED AND ADMITTED TO RECORD
12 October 2005 AS THE LAW DIRECTS.

TESTEE: Betsy B. Woolridge CLERK
By Clayton H. Bickel, Dep. Clerk
DOCUMENT NO. 05-00 24432



City of Williamsburg & County of James City
Circuit Court: This PLAT was recorded on
12 October 2005
at 2:51 AM/PM, PG. --
DOCUMENT # 050024432
BETSY B. WOOLRIDGE, CLERK
Betsy B. Woolridge Clerk



4 Large/Small Plat(s) Recorded
herewith as # 050024432

CONDOMINIUM PLAT
OF
SECTION 6G
(A PORTION OF PHASE II)
BRANDON WOODS
JAMES CITY COUNTY, VIRGINIA
SCALE: 1"=200' DATE: 10/7/05
SHEET 1 OF 4

**LANDMARK
DESIGN GROUP**
Engineers • Planners • Surveyors
Landscape Architects • Environmental Consultants
4029 IRONBOUND ROAD SUITE 100
WILLIAMSBURG, VA 23188
TEL (757) 253-2975 FAX(757) 229-0049