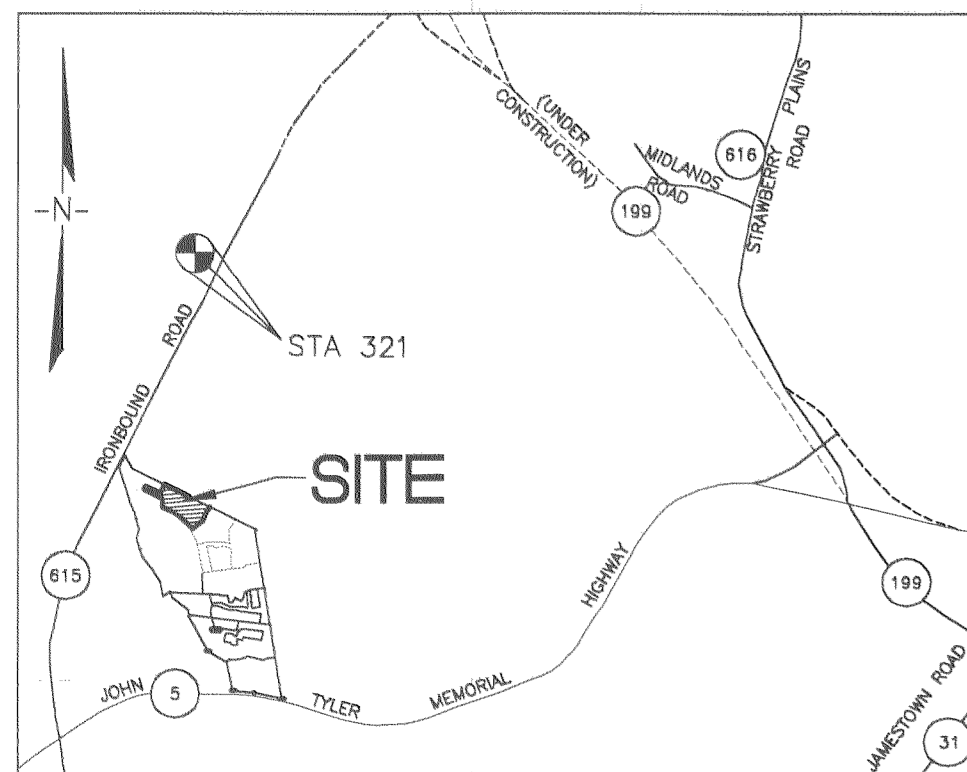
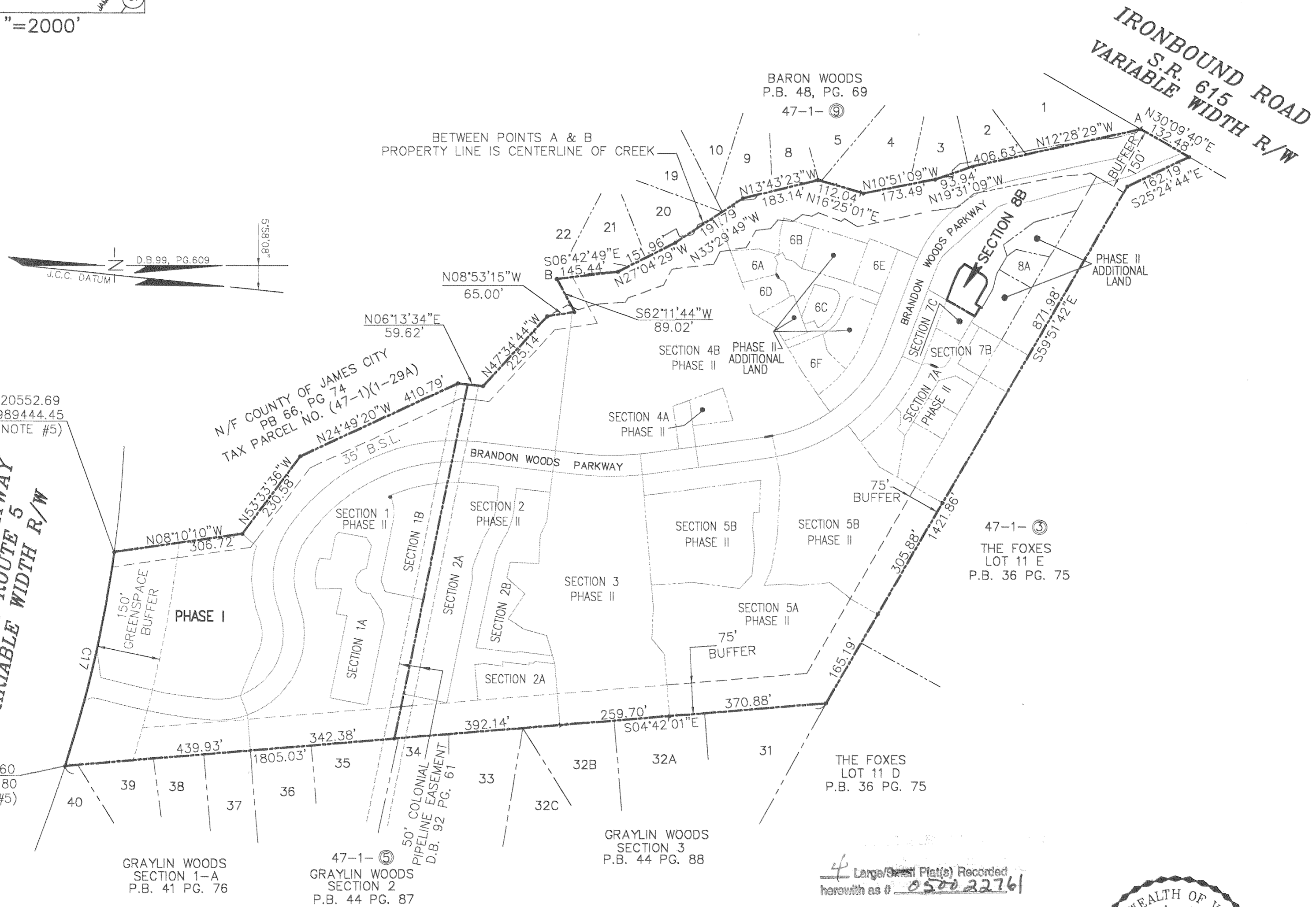


#050022761



VICINITY MAP 1"=2000'



N=3620552.69
E=11989444.45
(SEE NOTE #5)

JOHN TYLER HIGHWAY
STATE ROUTE 5
VARIABLE WIDTH R/W

N=3620489.60
E=11989961.80
(SEE NOTE #5)

GRAYLIN WOODS
SECTION 1-A
P.B. 41 PG. 76

47-1-5
GRAYLIN WOODS
SECTION 2
P.B. 44 PG. 87

GRAYLIN WOODS
SECTION 3
P.B. 44 PG. 88

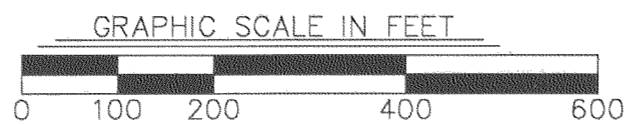
47-1-3
THE FOXES
LOT 11 E
P.B. 36 PG. 75

4 Large/Small Plat(s) Recorded
herewith as # 050022761

STATE OF VIRGINIA, COUNTY OF JAMES CITY

IN THE CLERK'S OFFICE OF THE CIRCUIT COURT THE PLAT SHOWN HEREON WAS PRESENTED AND ADMITTED TO RECORD 23 September 2005 AS THE LAW DIRECTS.

TESTEE: Betsy B. Woolridge, Clerk
By Claudia A. Gubert, Dep. Clerk
DOCUMENT NO. 050022761



City of Williamsburg & County of James City
Circuit Court: This PLAT was recorded on 23 September 2005
at 3:18 AM/PM, PG. —
DOCUMENT # 050022761
BETSY B. WOOLRIDGE, CLERK
Betsy B. Woolridge Clerk



CONDOMINIUM PLAT
OF
SECTION 8B
(A PORTION OF PHASE II)
BRANDON WOODS
JAMES CITY COUNTY, VIRGINIA
SCALE: 1"=200' DATE: 9/19/05

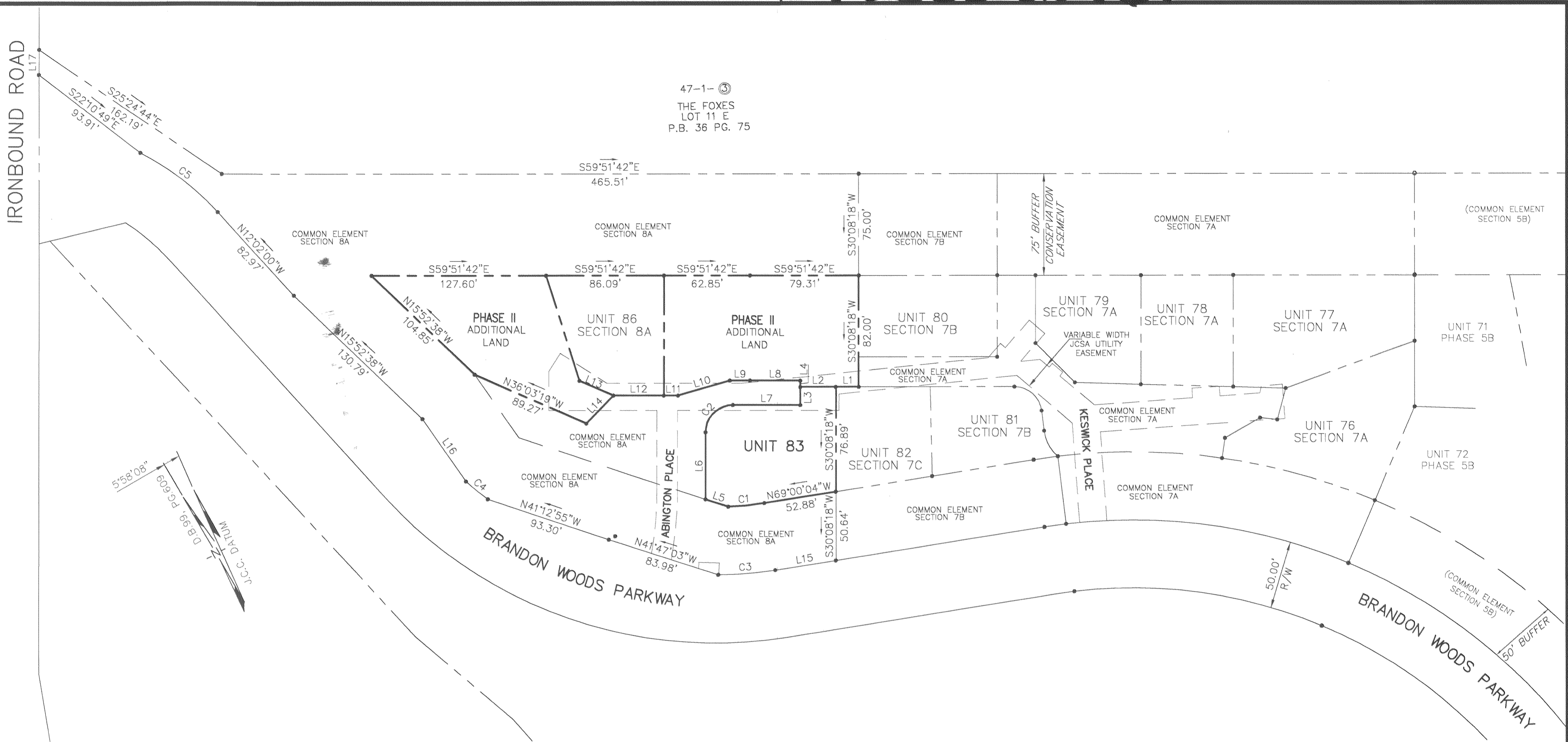
SHEET 1 OF 4

LANDMARK
DESIGN GROUP
Engineers • Planners • Surveyors
Landscape Architects • Environmental Consultants

4029 IRONBOUND ROAD SUITE 100
WILLIAMSBURG, VA 23188
TEL (757) 253-2975 FAX(757) 229-0049

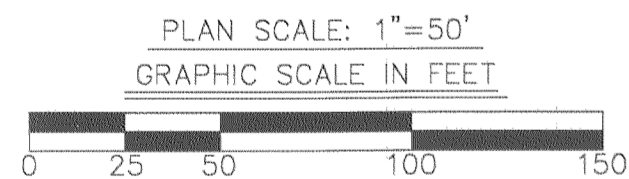
DRAWN BY: PF
CHKD. BY: AST

PROJ. NO.: 1980074-000.75
DWG. NO.: 16476W



LINE	LENGTH	BEARING
L1	16.64'	N59°51'42"W
L2	25.95'	S59°51'42"E
L3	13.33'	N30°08'18"E
L4	4.67'	N30°08'18"E
L5	17.48'	N41°47'03"W
L6	49.19'	N30°08'18"E
L7	49.19'	S59°51'42"E
L8	36.72'	N59°51'42"W
L9	14.74'	N59°51'42"W
L10	39.36'	N76°05'24"W
L11	10.31'	N59°51'42"W
L12	36.85'	N59°51'42"W
L13	27.14'	S36°11'58"E
L14	28.46'	N74°00'42"E
L15	44.84'	S69°00'04"E
L16	55.76'	N04°44'04"W
L17	18.52'	N30°48'37"E

CURVE	LENGTH	RADIUS	TANGENT	CHORD	CHORD BEARING	DELTA
C1	26.47'	225.00'	13.25'	26.45'	N65°37'52"W	6°44'24"
C2	31.42'	20.00'	20.00'	28.28'	N75°08'18"W	90°00'00"
C3	41.82'	275.00'	20.95'	41.78'	S64°38'41"E	8°42'46"
C4	20.66'	275.00'	10.34'	20.66'	S20°31'44"E	4°18'18"
C5	72.09'	205.00'	36.42'	71.72'	N22°06'28"W	20°08'56"



CONDOMINIUM PLAT
OF
SECTION 8B
(A PORTION OF PHASE II)
BRANDON WOODS
JAMES CITY COUNTY, VIRGINIA
SCALE: 1"=50' DATE: 9/19/05

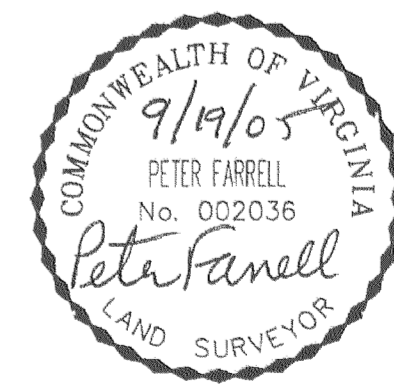
SHEET 2 OF 4

**LANDMARK
DESIGN GROUP**
Engineers • Planners • Surveyors
Landscape Architects • Environmental Consultants

4029 IRONBOUND ROAD SUITE 100
WILLIAMSBURG, VA 23188
TEL (757) 253-2975 FAX(757) 229-0049

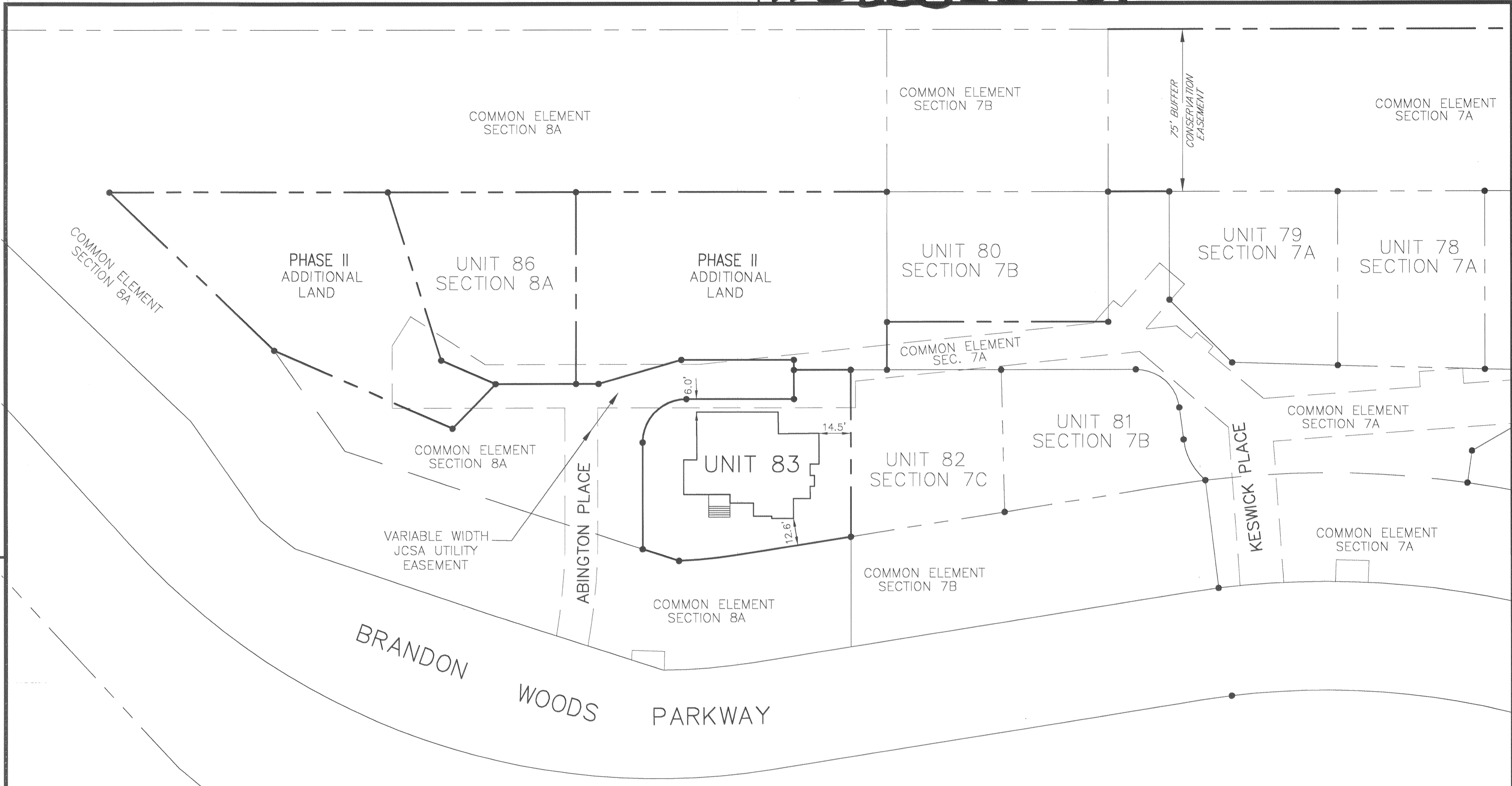
4 Large/Small Plat(s) Recorded
herewith as # 050022761

City of Williamsburg & County of James City
Circuit Court: This PLAT was recorded on
23 September 2005
at 3:18 AM/PM, PG. _____
DOCUMENT # 050022761
BETSY B. WOOLRIDGE, CLERK
Betsy B. Woolridge Clerk



STATE OF VIRGINIA, COUNTY OF JAMES CITY
IN THE CLERK'S OFFICE OF THE CIRCUIT COURT THE PLAT
SHOWN HEREON WAS PRESENTED AND ADMITTED TO RECORD
23 September 2005 AS THE LAW DIRECTS.
TESTEE: BETSY B. WOOLRIDGE, CLERK CLERK
Betsy B. Woolridge
DOCUMENT NO. 050022761

#050022761

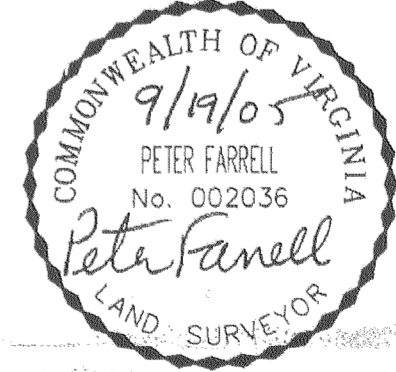


CONDOMINIUM PLAT
 OF
 SECTION 8B
 (A PORTION OF PHASE II)
 BRANDON WOODS
 JAMES CITY COUNTY, VIRGINIA
 SCALE: 1"=30' DATE: 9/19/05

SHEET 3 OF 4

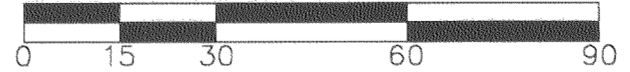
LANDMARK
DESIGN GROUP
 Engineers • Planners • Surveyors
 Landscape Architects • Environmental Consultants

4029 IRONBOUND ROAD SUITE 100
 WILLIAMSBURG, VA 23188
 TEL (757) 253-2975 FAX(757) 229-0049



4 Large/Small Plat(s) Recorded
 herewith as # 050022761

PLAN SCALE: 1"=30'
 GRAPHIC SCALE IN FEET



STATE OF VIRGINIA, COUNTY OF JAMES CITY

IN THE CLERK'S OFFICE OF THE CIRCUIT COURT THE PLAT
 SHOWN HEREON WAS PRESENTED AND ADMITTED TO RECORD
 23 September 2005 AS THE LAW DIRECTS.

BETSY B. WOOLRIDGE, CLERK
 TESTEE: *Claudia H. G. Hartz, Esq.* CLERK
 DOCUMENT NO. 050022761

City of Williamsburg & County of James City
 Circuit Court This PLAT was recorded on
 23 September 2005
 at 2:18 AM P.M. PG. 1
 DOCUMENT # 050022761
 BETSY B. WOOLRIDGE, CLERK
Betsy B. Woolridge Clerk

DRAWN BY: PF
 CHECKED BY: AST
 PROJ. NO.: 1980074-000.75
 DWG. NO.: 16474W

#050022761

CERTIFICATE OF SOURCE OF TITLE

THE PROPERTY SHOWN ON THIS PLAT WAS CONVEYED BY WOODBURY ASSOCIATES, L.L.C. TO BRANDON WOODS LIMITED PARTNERSHIP, BY DEED DATED DECEMBER 19, 1997 AND RECORDED IN THE OFFICE OF THE CLERK OF THE CIRCUIT COURT OF THE COUNTY OF JAMES CITY AS INSTRUMENT NO. 98000030.

CERTIFICATE OF OWNER(S)

THE PLATTING OF THE LAND HEREON IS WITH THE FREE CONSENT AND IN ACCORDANCE WITH THE DESIRES OF THE UNDERSIGNED OWNERS, PROPRIETORS, AND TRUSTEES IF ANY.

Myrl Hairfield
MYRL HAIRFIELD, MANAGER
BRANDON WOODS L.P.

CERTIFICATE OF NOTARIZATION

STATE OF VIRGINIA
CITY/COUNTY OF James City

I, Heather Gilbert A NOTARY PUBLIC IN AND FOR THE CITY/COUNTY AND STATE AFORESAID, DO HEREBY CERTIFY THAT THE PERSONS WHOSE NAMES AND SIGNED TO THE FOREGOING WRITING HAVE ACKNOWLEDGED THE SAME BEFORE ME IN THE CITY/COUNTY AFORESAID, GIVEN UNDER MY NAME THIS 23 DAY OF September 2005.

MY COMMISSION EXPIRES 12-31-07

Heather Gilbert
SIGNATURE

William H Carr
WILLIAM H. CARR, TRUSTEE

CERTIFICATE OF NOTARIZATION

STATE OF VIRGINIA
CITY/COUNTY OF Newport News

I, Janet B. Unthicum A NOTARY PUBLIC IN AND FOR THE CITY/COUNTY AND STATE AFORESAID, DO HEREBY CERTIFY THAT THE PERSONS WHOSE NAMES AND SIGNED TO THE FOREGOING WRITING HAVE ACKNOWLEDGED THE SAME BEFORE ME IN THE CITY/COUNTY AFORESAID, GIVEN UNDER MY NAME THIS 21st DAY OF September 2005.

MY COMMISSION EXPIRES 9-30-07

Janet B. Unthicum
SIGNATURE

I CERTIFY THAT THIS PLAT IS ACCURATE AND COMPLIES WITH THE PROVISIONS OF SECTION 55-79.58(A) OF THE VIRGINIA CONDOMINIUM ACT. ALL UNITS OR PORTIONS THEREOF DEPICTED HEREON HAVE BEEN SUBSTANTIALLY COMPLETED.

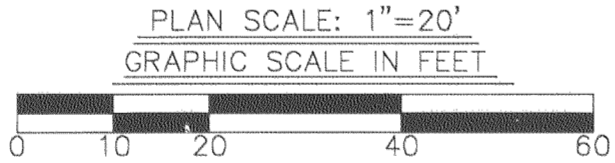
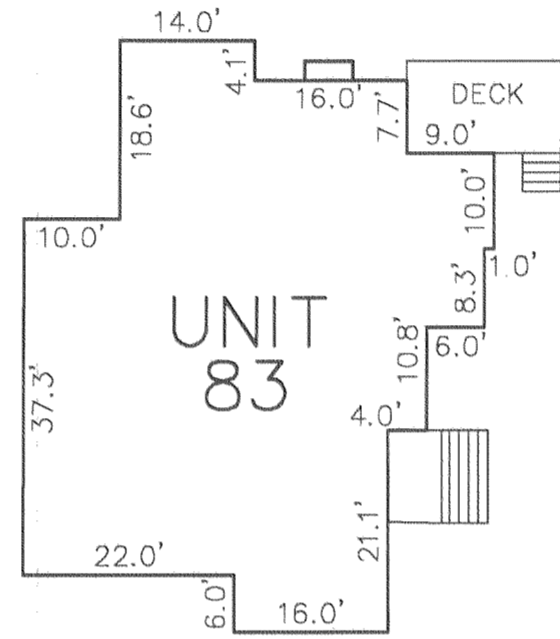
Peter Farrell 9/19/05
PETER FARRELL, LS DATE



STATE OF VIRGINIA, COUNTY OF JAMES CITY

IN THE CLERK'S OFFICE OF THE CIRCUIT COURT THE PLAT SHOWN HEREON WAS PRESENTED AND ADMITTED TO RECORD AS THE LAW DIRECTS.

Betsy B. Woolridge, Clerk
TESTEE: Betsy B. Woolridge, Clerk
DOCUMENT NO. 050022761



PHASE II, SECTION 7C UNIT/LAND TABULATION
UNIT 83 = 6,928 SQ. FT. / 0.1590 AC.

PHASE II AREA TABULATION

Table listing area tabulation for sections 1 through 8A, with values ranging from 0.1140 AC to 6.9449 AC.

TOTAL SECTION 8B UNITS/LAND TOTAL 0.1590 AC.

TOTAL SECTION 8B 0.1590 AC.

ADDITIONAL LAND PHASE II 1.0324 AC.

GENERAL NOTES

- 1) THE PROPERTY IS ZONED LIMITED RESIDENTIAL DISTRICT, R-1 CLUSTER WITH S.U.P.
2) THIS PROPERTY IS TAX PARCEL NO. (47-1)(1-29).
3) THE PROPERTY IS SERVED BY PUBLIC WATER AND SEWER.
4) THE OVERALL EXTERNAL BOUNDARY DEPICTED ON THIS PLAT IS BASED UPON DOCUMENTS OF RECORD AND A FIELD SURVEY OF THE SITE AS FOUND ON APRIL 1, 1997 AND WAS PREPARED WITHOUT THE BENEFIT OF A TITLE EXAMINATION.
5) COORDINATES SHOWN ARE REFERENCED TO JAMES CITY COUNTY GEODETIC CONTROL MONUMENT NO. 321.
6) THIS PROPERTY IS SUBJECT TO CONDOMINIUM DECLARATION TO BE RECORDED SIMULTANEOUSLY WITH THIS PLAT.
7) EACH CONDOMINIUM UNIT CONSISTS OF THE SPACE WITHIN THE BOUNDARIES ESTABLISHED FOR THAT CONDOMINIUM UNIT TOGETHER WITH ANY IMPROVEMENTS CONSTRUCTED THEREON.
8) COMMON ELEMENTS INCLUDE ALL PORTIONS OF THE CONDOMINIUM OTHER THAN THE UNITS DESIGNATED HEREON.
9) THE HORIZONTAL LIMITS FOR EACH UNIT ARE DEFINED HEREON BY LINES SHOWN WITH METES AND BOUNDS LYING OUTSIDE THE UNITS IMPROVEMENTS.
10) THERE ARE NO DEFINED VERTICAL LIMITS FOR EACH UNIT.

CONDOMINIUM PLAT OF SECTION 8B

(A PORTION OF PHASE II) BRANDON WOODS

JAMES CITY COUNTY, VIRGINIA
SCALE: 1"=20' DATE: 9/19/05

SHEET 4 OF 4



Engineers • Planners • Surveyors
Landscape Architects • Environmental Consultants
4029 IRONBOUND ROAD SUITE 100
WILLIAMSBURG, VA 23188
TEL (757) 253-2975 FAX(757) 229-0049

City of Williamsburg & County of James City
Circuit Court This PLAT was recorded on 23 September 2005
at 3:18 AM/PM PG
DOCUMENT # 050022761
Betsy B. Woolridge, Clerk

4 Large/Small Plats Recorded herewith as # 050022761

BETSY B. WOOLRIDGE, CLERK