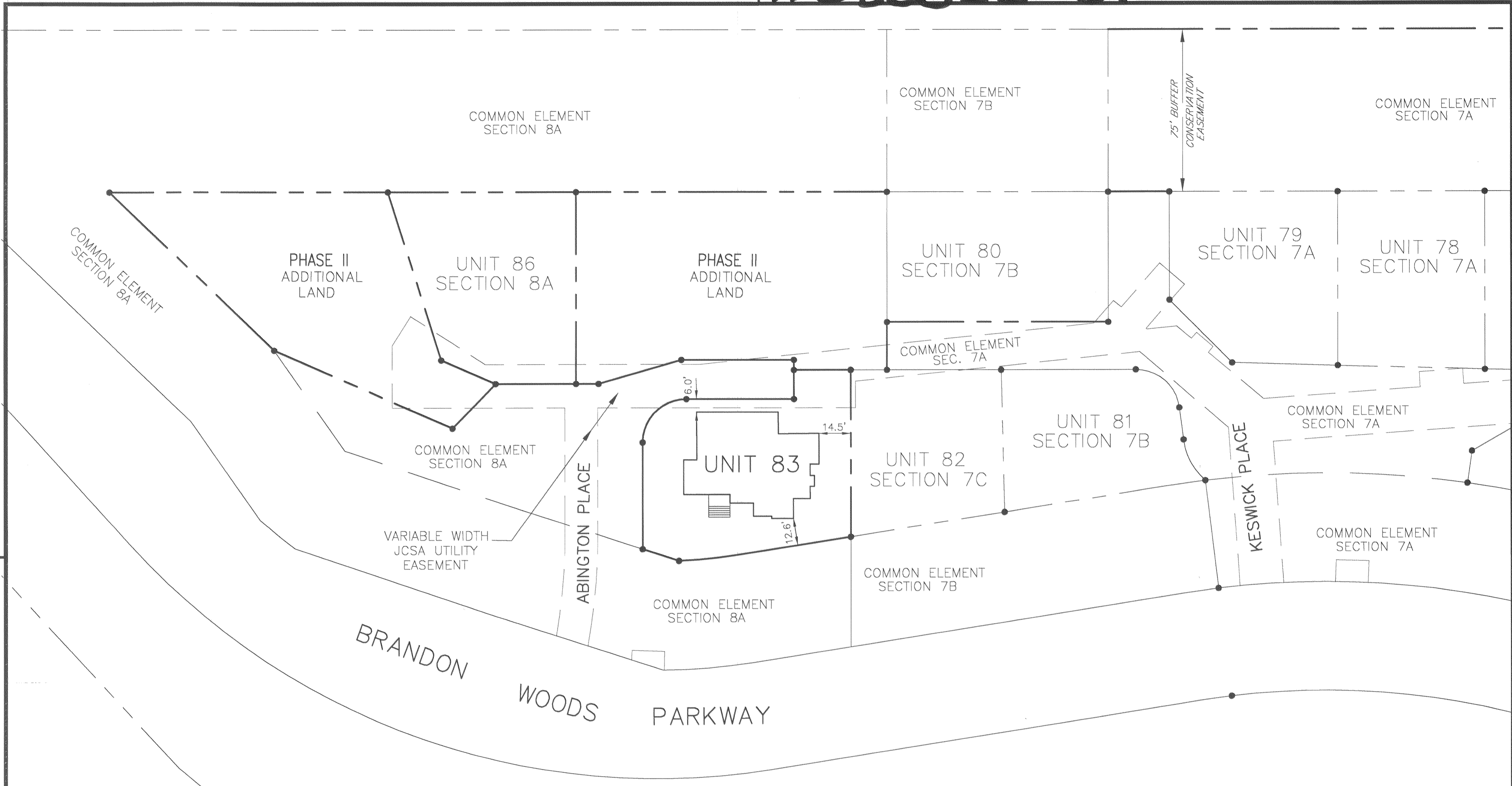


#050022761

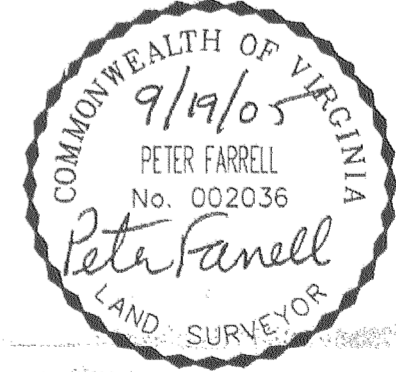


CONDOMINIUM PLAT
 OF
 SECTION 8B
 (A PORTION OF PHASE II)
 BRANDON WOODS
 JAMES CITY COUNTY, VIRGINIA
 SCALE: 1"=30' DATE: 9/19/05

SHEET 3 OF 4

LANDMARK
DESIGN GROUP
 Engineers • Planners • Surveyors
 Landscape Architects • Environmental Consultants

4029 IRONBOUND ROAD SUITE 100
 WILLIAMSBURG, VA 23188
 TEL (757) 253-2975 FAX(757) 229-0049



4 Large/Small Plat(s) Recorded
 herewith as # 050022761

PLAN SCALE: 1"=30'
 GRAPHIC SCALE IN FEET



STATE OF VIRGINIA, COUNTY OF JAMES CITY

IN THE CLERK'S OFFICE OF THE CIRCUIT COURT THE PLAT
 SHOWN HEREON WAS PRESENTED AND ADMITTED TO RECORD
 23 September 2005 AS THE LAW DIRECTS.

BETSY B. WOOLRIDGE, CLERK
 TESTEE: *Claudia H. G. Hartz, Esq.* Clerk
 DOCUMENT NO. 050022761

City of Williamsburg & County of James City
 Circuit Court This PLAT was recorded on
 23 September 2005
 at 2:18 AM P.M. PG. 1
 DOCUMENT # 050022761
 BETSY B. WOOLRIDGE, CLERK
Betsy B. Woolridge Clerk

DRAWN BY: PF
 CHECKED BY: AST
 PROJ. NO.: 1980074-000.75
 DWG. NO.: 16474W