



### CURVE DATA

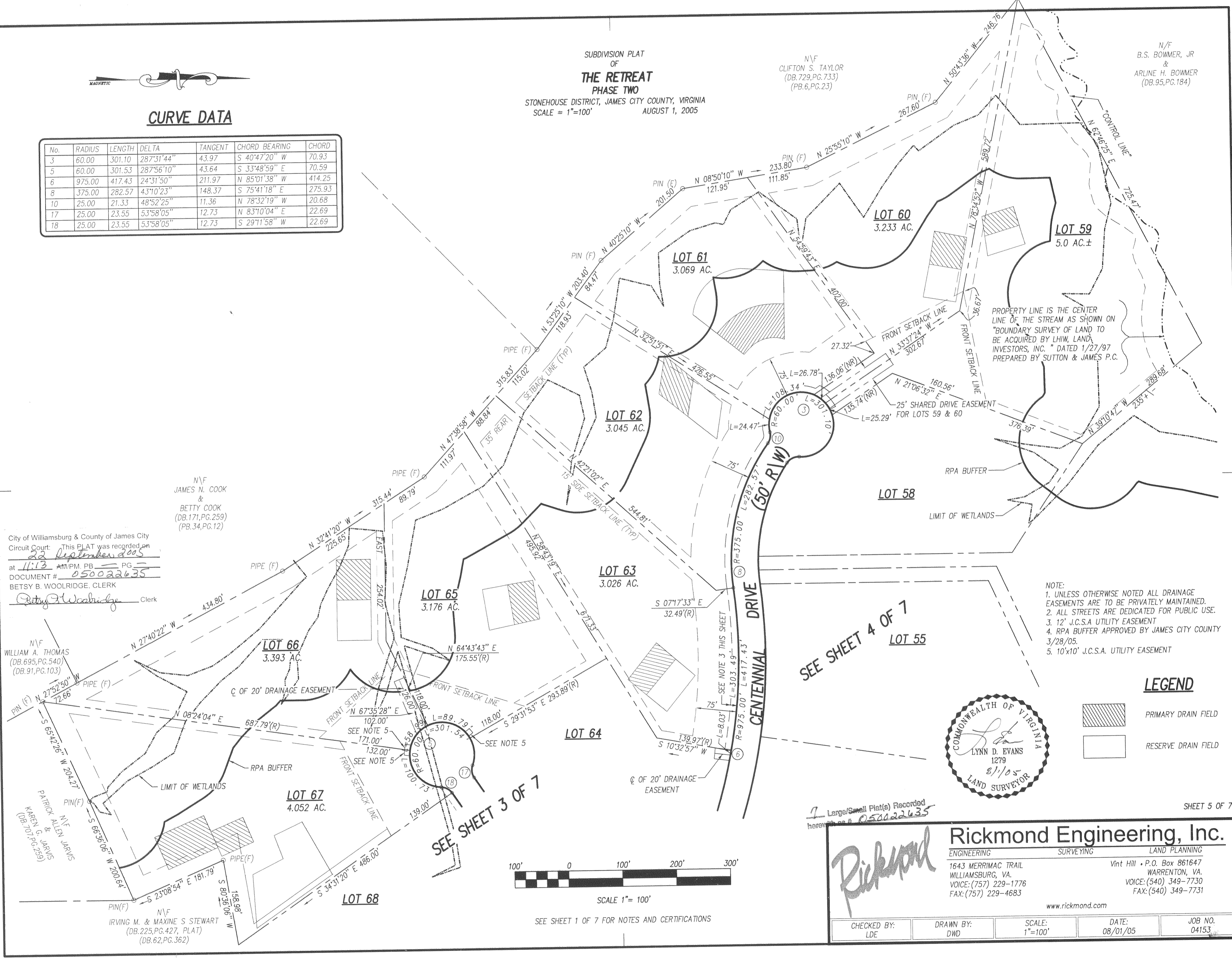
No.	RADIUS	LENGTH	DELTA	TANGENT	CHORD BEARING	CHORD
3	60.00	301.10	287°31'44"	43.97	S 40°47'20" W	70.93
5	60.00	301.53	287°56'10"	43.64	S 33°48'59" E	70.59
6	975.00	417.43	24°31'50"	211.97	N 85°01'38" W	414.25
8	375.00	282.57	43°10'23"	148.37	S 75°41'18" E	275.93
10	25.00	21.33	48°52'25"	11.36	N 78°32'19" W	20.68
17	25.00	23.55	53°58'05"	12.73	N 83°10'04" E	22.69
18	25.00	23.55	53°58'05"	12.73	S 29°11'58" W	22.69

SUBDIVISION PLAT  
 OF  
**THE RETREAT**  
 PHASE TWO  
 STONEHOUSE DISTRICT, JAMES CITY COUNTY, VIRGINIA  
 SCALE = 1"=100' AUGUST 1, 2005

N/F  
 CLIFTON S. TAYLOR  
 (DB.729,PG.733)  
 (PB.6,PG.23)

N/F  
 B.S. BOWMER, JR  
 &  
 ARLINE H. BOWMER  
 (DB.95,PG.184)

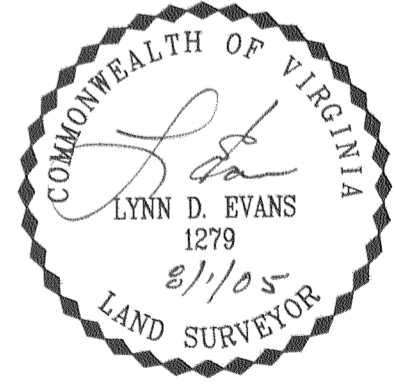
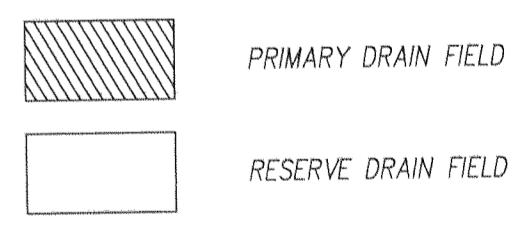
#050022635



PROPERTY LINE IS THE CENTER  
 LINE OF THE STREAM AS SHOWN ON  
 "BOUNDARY SURVEY OF LAND TO  
 BE ACQUIRED BY LHW, LAND  
 INVESTORS, INC." DATED 1/27/97  
 PREPARED BY SUTTON & JAMES P.C.

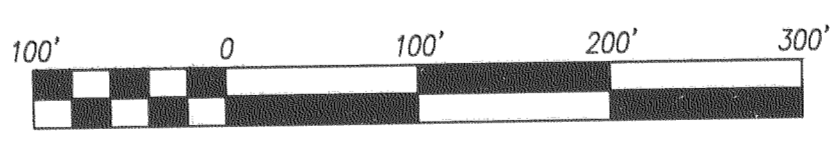
- NOTE:
1. UNLESS OTHERWISE NOTED ALL DRAINAGE EASEMENTS ARE TO BE PRIVATELY MAINTAINED.
  2. ALL STREETS ARE DEDICATED FOR PUBLIC USE.
  3. 12' J.C.S.A. UTILITY EASEMENT
  4. RPA BUFFER APPROVED BY JAMES CITY COUNTY 3/28/05.
  5. 10'x10' J.C.S.A. UTILITY EASEMENT

### LEGEND



SEE SHEET 4 OF 7

SEE SHEET 3 OF 7



SCALE 1"= 100'

SEE SHEET 1 OF 7 FOR NOTES AND CERTIFICATIONS

7 Large/Small Plat(s) Recorded  
 herewith as # 050022635

SHEET 5 OF 7

Rickmond

## Rickmond Engineering, Inc.

**ENGINEERING**      **SURVEYING**      **LAND PLANNING**  
 1643 MERRIMAC TRAIL      Vint Hill • P.O. Box 861647  
 WILLIAMSBURG, VA.      WARRENTON, VA.  
 VOICE: (757) 229-1776      VOICE: (540) 349-7730  
 FAX: (757) 229-4683      FAX: (540) 349-7731  
 www.rickmond.com

CHECKED BY: LDE	DRAWN BY: DWD	SCALE: 1"=100'	DATE: 08/01/05
			JOB NO. 04153

City of Williamsburg & County of James City  
 Circuit Court: This PLAT was recorded on  
 22 September 2005  
 at 11:13 AM/PM PB PG  
 DOCUMENT # 050022635  
 BETSY B. WOOLRIDGE, CLERK  
*Betsy Woolridge* Clerk

N/F  
 WILLIAM A. THOMAS  
 (DB.695,PG.540)  
 (DB.91,PG.103)

N/F  
 PATRICK ALLEN JARVIS  
 KAREN G. JARVIS  
 (DB.707,PG.259)

N/F  
 IRVING M. & MAXINE S STEWART  
 (DB.225,PG.427, PLAT)  
 (DB.62,PG.362)

N/F  
 JAMES N. COOK  
 &  
 BETTY COOK  
 (DB.171,PG.259)  
 (PB.34,PG.12)