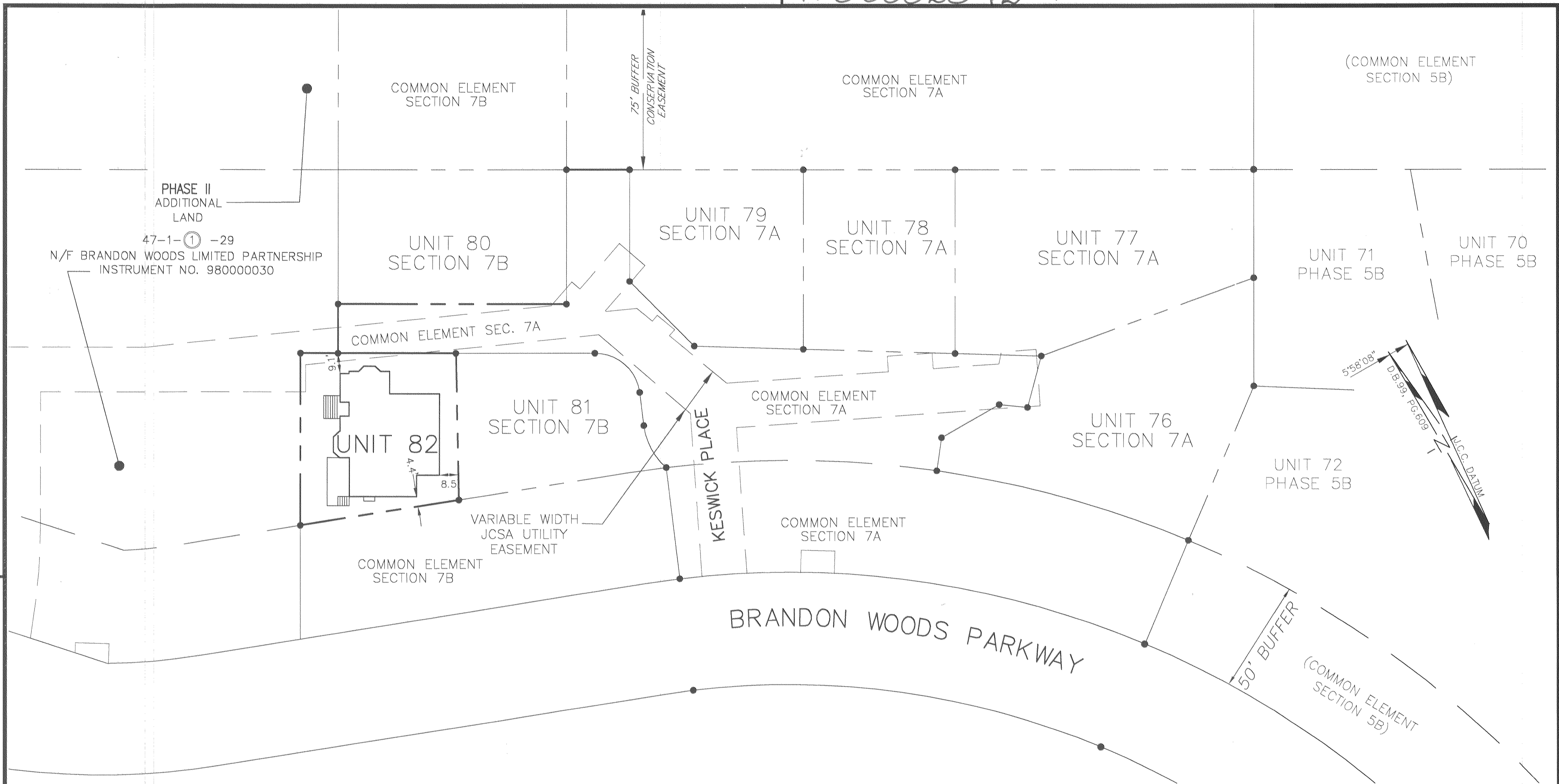
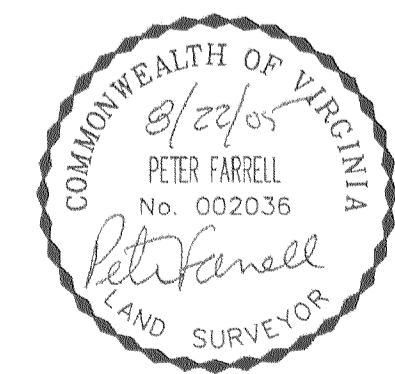


1#050020429



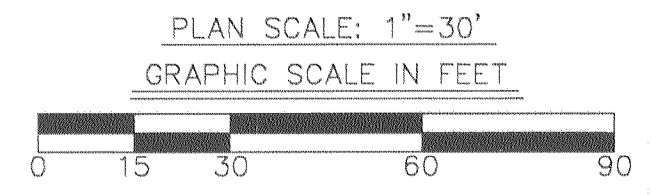
CONDOMINIUM PLAT
 OF
 SECTION 7C
 (A PORTION OF PHASE II)
 BRANDON WOODS
 JAMES CITY COUNTY, VIRGINIA
 SCALE: 1"=30' DATE: 8/22/05
 SHEET 3 OF 4



LANDMARK
DESIGN GROUP
 Engineers • Planners • Surveyors
 Landscape Architects • Environmental Consultants
 4029 IRONBOUND ROAD SUITE 100
 WILLIAMSBURG, VA 23188
 TEL (757) 253-2975 FAX(757) 229-0049

4 Large Scale Plats Recorded
 herewith as # 050020429

STATE OF VIRGINIA, COUNTY OF JAMES CITY
 IN THE CLERK'S OFFICE OF THE CIRCUIT COURT THE PLAT
 SHOWN HEREON WAS PRESENTED AND ADMITTED TO RECORD
 Aug. 30, 2005 at 2:33p.m. AS THE LAW DIRECTS.
 TESTEE: *See Ann Hallman* Dep. CLERK
 REBEY L. WOOLRIDGE, CLERK
 DOCUMENT NO. 050020429



DRAWN BY : PF
 PROJ. NO. : 1980074-000.73
 CHKD BY : AST
 DWG. NO. : 16345W