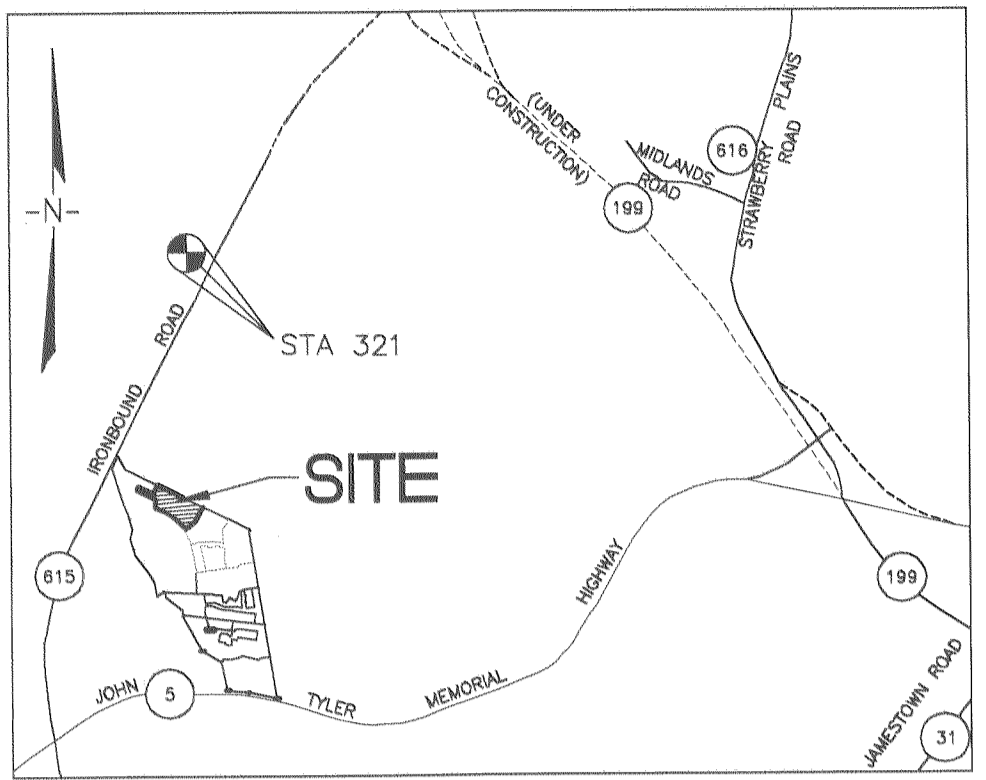
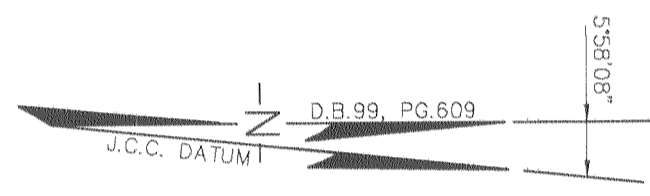


#050020429



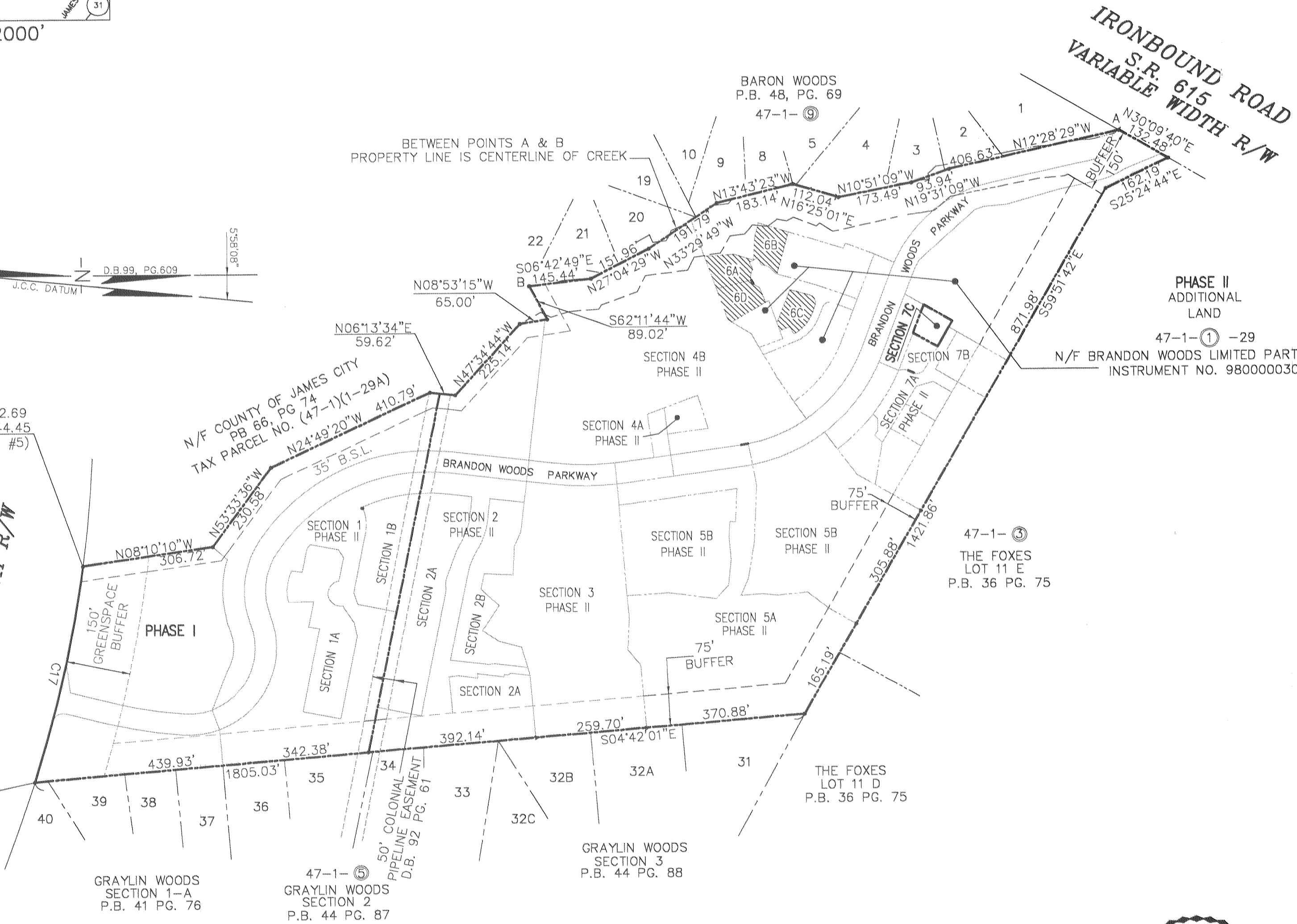
VICINITY MAP 1"=2000'



N=3620552.69  
E=11989444.45  
(SEE NOTE #5)

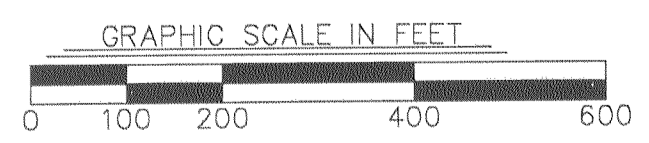
JOHN TYLER HIGHWAY  
STATE ROUTE 5  
VARIABLE WIDTH R/W

N=3620489.60  
E=11989961.80  
(SEE NOTE #5)



CONDOMINIUM PLAT  
OF  
SECTION 7C  
(A PORTION OF PHASE II)  
BRANDON WOODS  
JAMES CITY COUNTY, VIRGINIA  
SCALE: 1"=200' DATE: 8/22/05  
SHEET 1 OF 4

**LANDMARK  
DESIGN GROUP**  
Engineers • Planners • Surveyors  
Landscape Architects • Environmental Consultants  
4029 IRONBOUND ROAD, SUITE 100  
WILLIAMSBURG, VA 23188  
TEL (757) 253-2975 FAX(757) 229-0049



4 Large Area Plat(s) Recorded  
Instrument No. 050020429

STATE OF VIRGINIA, COUNTY OF JAMES CITY

IN THE CLERK'S OFFICE OF THE CIRCUIT COURT THE PLAT  
SHOWN HEREON WAS PRESENTED AND ADMITTED TO RECORD  
Aug. 30, 2005 at 2:33 P.M. AS THE LAW DIRECTS.

TESTE: *Seton Hillman* dep. CLERK BETSY B. WOOLRIDGE, CLERK

DOCUMENT NO. 050020429

DRAWN BY: PF  
CHKD BY: AST

PROJ. NO.: 1980074-000.73  
DWG. NO.: 16347W