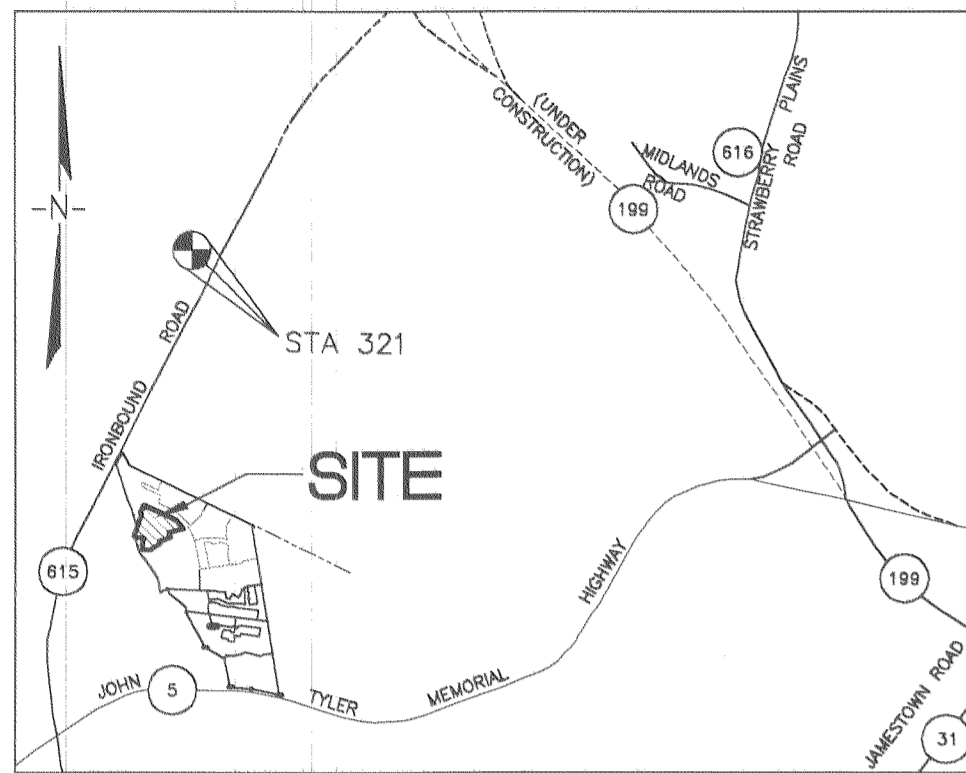
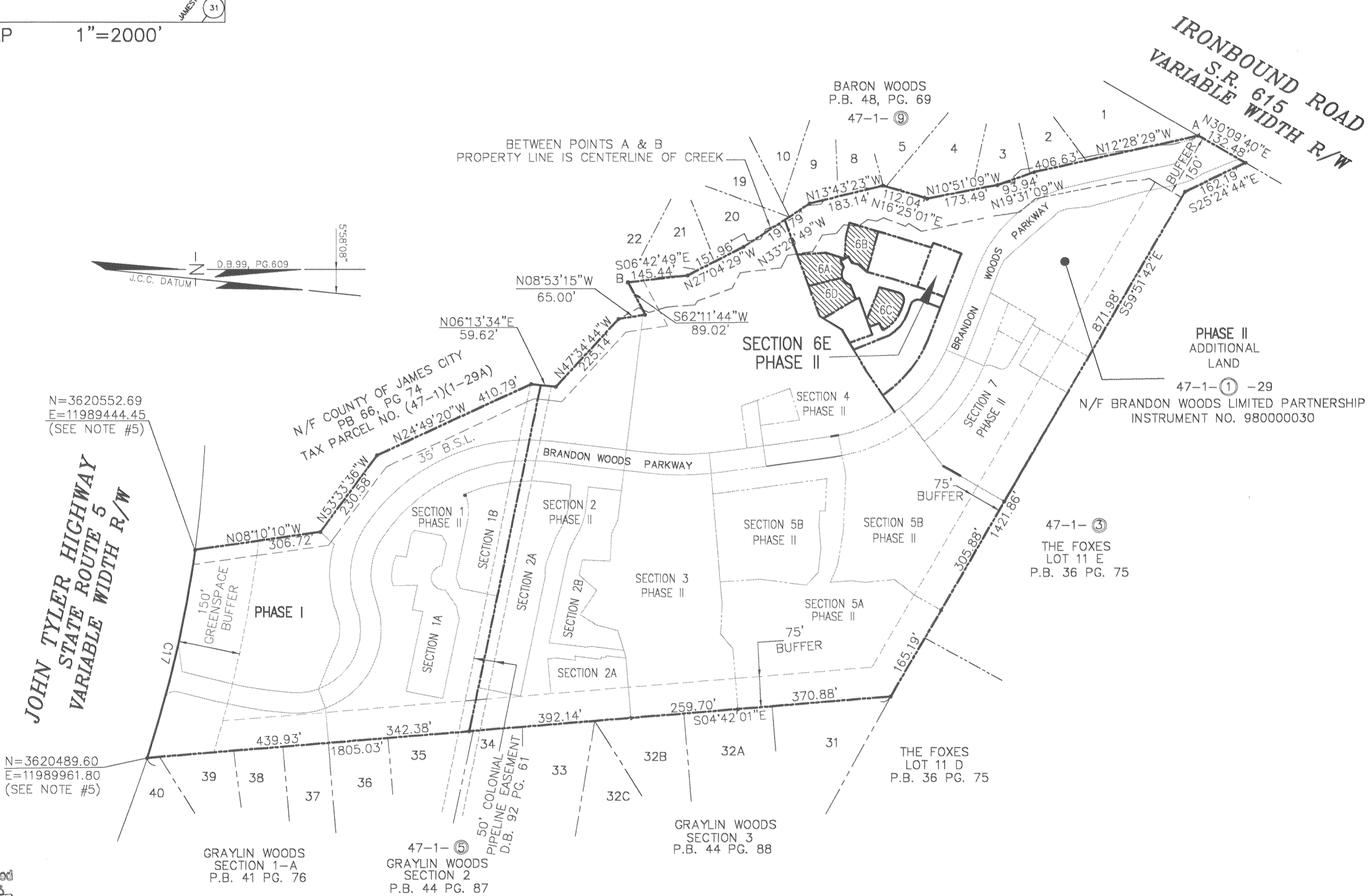


1#050020428



VICINITY MAP 1"=2000'



JOHN TYLER HIGHWAY
STATE ROUTE 5
VARIABLE WIDTH R/W

N=3620552.69
E=11989444.45
(SEE NOTE #5)

150' GREENSPACE BUFFER

35' B.S.L.

50' COLONIAL PIPELINE EASEMENT
D.B. 92 PG. 61

75' BUFFER

75' BUFFER

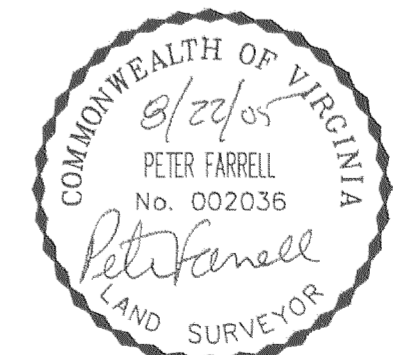
N=3620489.60
E=11989961.80
(SEE NOTE #5)

GRAYLIN WOODS SECTION 1-A
P.B. 41 PG. 76

47-1-5
GRAYLIN WOODS SECTION 2
P.B. 44 PG. 87

GRAYLIN WOODS SECTION 3
P.B. 44 PG. 88

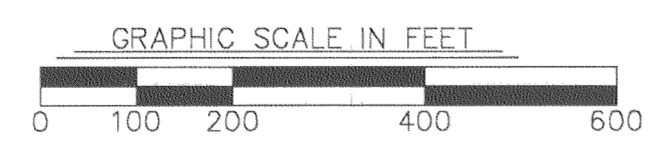
47-1-3
THE FOXES LOT 11 E
P.B. 36 PG. 75



City of Williamsburg & County of James City
Circuit Court: This PLAT was recorded on
8-30-2005
at 2:28 PM PG. PG.
DOCUMENT # 050020428
BETSY B. WOOLRIDGE, CLERK
Betsy B. Woolridge Clerk

CONDOMINIUM PLAT
OF
SECTION 6E
(A PORTION OF PHASE II)
BRANDON WOODS
JAMES CITY COUNTY, VIRGINIA
SCALE: 1"=200' DATE: 8/22/05
SHEET 1 OF 4

LANDMARK DESIGN GROUP
Engineers • Planners • Surveyors
Landscape Architects • Environmental Consultants
4029 IRONBOUND ROAD SUITE 100
WILLIAMSBURG, VA 23188
TEL (757) 253-2975 FAX(757) 229-0049



4 Large Scale Plat(s) Recorded
herein as # 050020428

STATE OF VIRGINIA, COUNTY OF JAMES CITY
IN THE CLERK'S OFFICE OF THE CIRCUIT COURT THE PLAT
SHOWN HEREON WAS PRESENTED AND ADMITTED TO RECORD
8-30-2005 AS THE LAW DIRECTS.

TESTEE: *Betsy B. Woolridge* Dep.
CLERK

DOCUMENT NO. 050020428
BETSY B. WOOLRIDGE, CLERK