

#050020150

OWNER'S CONSENT AND DEDICATION

THE PLATTING OF NATURAL OPEN SPACE AND CONSERVATION EASEMENT SHOWN HEREON IS WITH THE FREE CONSENT AND IN ACCORDANCE WITH THE DESIRES OF THE UNDERSIGNED OWNERS, PROPRIETORS, AND OR TRUSTEES.

[Signature]  
COLONIAL HERITAGE LLC  
DATE 9/9/04

Donald G. Fink  
PRINTED NAME

NOTES:

1. THE PROPERTY SHOWN IS A PORTION OF TAX MAP PARCEL (24-3)(1-3) AND (24-3)(1-32). STREET ADDRESS: 6925 RICHMOND RD. AND 6799 RICHMOND RD.
2. WETLANDS AND LAND WITHIN RESOURCE PROTECTION AREAS SHALL REMAIN IN A NATURAL UNDISTURBED STATE EXCEPT FOR THOSE ACTIVITIES PERMITTED IN SECTION 23-7(c)(1) OF THE JAMES CITY COUNTY CODE.
3. ANY EXISTING, UNUSED WELLS SHALL BE ABANDONED IN ACCORDANCE WITH STATE PRIVATE WELL REGULATIONS AND JAMES CITY COUNTY CODE.
4. PROPERTY LINES AS SHOWN ARE BASED UPON, RECORD PLATS AND OTHER AVAILABLE INFORMATION AND DOES NOT REPRESENT AN ACTUAL FIELD BOUNDARY SURVEY. THIS PLAT WAS PREPARED WITHOUT THE BENEFIT OF A CURRENT TITLE REPORT.

TOTAL AREA: 37.38 ACRES

CERTIFICATE OF NOTARIZATION

STATE OF VIRGINIA, CITY/COUNTY OF James City TO-WIT:

I, Brittany L. Mangold A NOTARY PUBLIC IN AND FOR THE CITY/COUNTY AND STATE AFORESAID, DO HEREBY CERTIFY THAT THE ABOVE PERSON WHOSE NAME IS SIGNED TO THE FOREGOING WRITING HAS ACKNOWLEDGED THE SAME BEFORE ME IN THE CITY/COUNTY AND STATE AFORESAID.

GIVEN UNDER MY HAND THIS 9 DAY OF September, 2004.

MY COMMISSION EXPIRES June 30, 2007

Brittany L. Mangold  
NOTARY PUBLIC

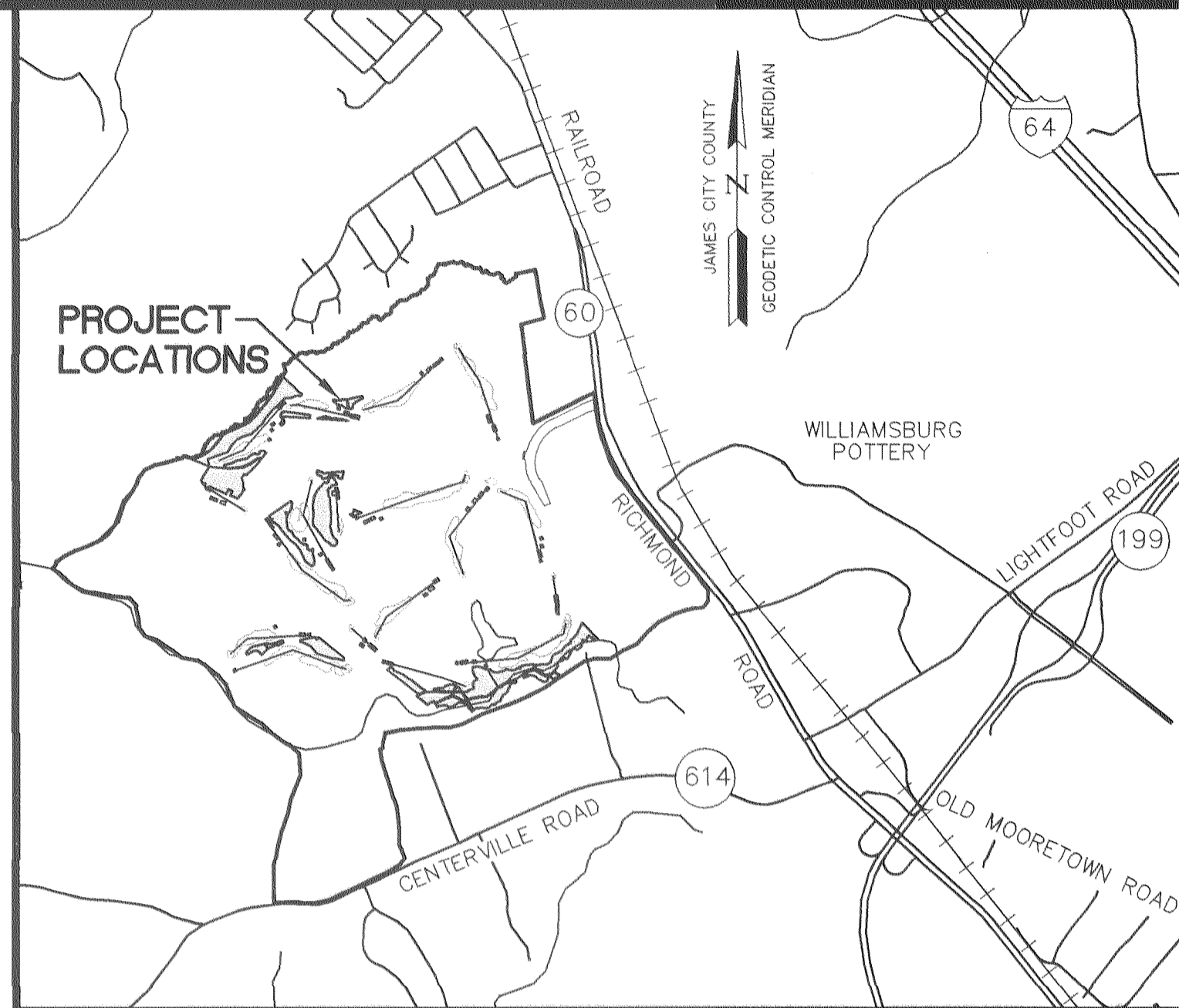
CERTIFICATION OF SOURCE OF TITLE

THIS IS TO CERTIFY THAT THE NATURAL OPEN SPACE AND CONSERVATION EASEMENTS STANDS IN THE NAME OF COLONIAL HERITAGE LLC, AND WAS ACQUIRED BY DEEDS DULY RECORDED IN THE CLERK'S OFFICE OF THE CIRCUIT COURT OF THE COUNTY OF JAMES CITY, VIRGINIA, AS INSTRUMENT NO. 030000330 AND 030000331.

SURVEYOR'S CERTIFICATE

I HEREBY CERTIFY THAT TO THE BEST OF MY KNOWLEDGE AND BELIEF, THIS PLAT COMPLIES WITH ALL OF THE REQUIREMENTS OF THE BOARD OF SUPERVISORS AND ORDINANCES OF THE COUNTY OF JAMES CITY, VIRGINIA, REGARDING THE PLATTING OF SUBDIVISIONS WITHIN THE COUNTY.

G.T. Wilson, Jr.  
SURVEYOR SIGNATURE  
DATE 5/14/04



LOCATION MAP

SCALE: 1"=2000'

STATE OF VIRGINIA  
CITY OF WILLIAMSBURG & COUNTY OF JAMES CITY CIRCUIT COURT. THIS 26 DAY OF Aug, 2005.  
THE PLAT SHOWN HEREON WAS PRESENTED AND ADMITTED TO THE RECORD AS THE LAW DIRECTS. @ 12:45 PM  
INSTRUMENT # 050020150

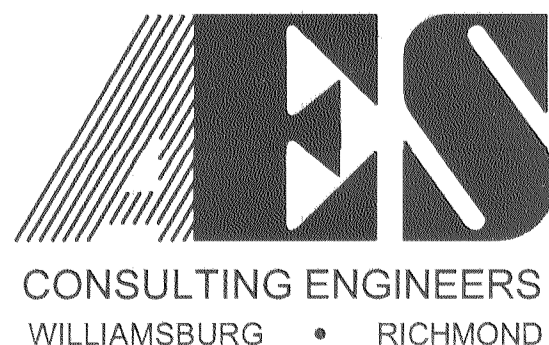
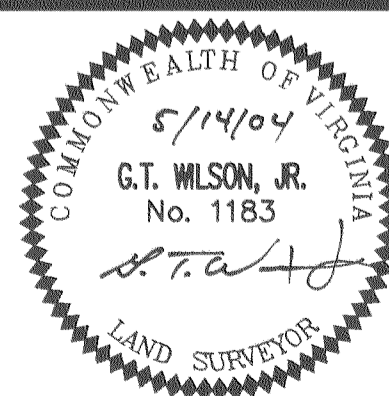
TESTE: Betsy B. Woolridge, CLERK  
7 Large/Small Plat(s) Recorded herewith as # 050020150

City of Williamsburg & County of James City  
Circuit Court: This PLAT was recorded on 8-26-2005  
at 12:45 PM, PG 1  
DOCUMENT # 050020150  
BETSY B. WOOLRIDGE, CLERK  
Betsy B. Woolridge Clerk

No.	DATE	REVISION / COMMENT / NOTE	BY
1	9/7/04	REVISED PER COUNTY COMMENTS	HWP

Designed AES	Drawn AES
Scale NOTED	Date 5/14/04
Project No. 8881-11H	
Drawing No. 1 of 7	

PLAT OF NATURAL OPEN SPACE & CONSERVATION EASEMENTS  
COLONIAL HERITAGE  
PORTIONS OF GOLF COURSE HOLES 1-18  
FOR CONVEYANCE TO JAMES CITY COUNTY  
STONEHOUSE DISTRICT JAMES CITY COUNTY VIRGINIA



5248 Olde Towne Road, Suite 1  
Williamsburg, Virginia 23188  
(757) 253-0040  
Fax (757) 220-8994

#050020150

LINE TABLE FOR AREA #14

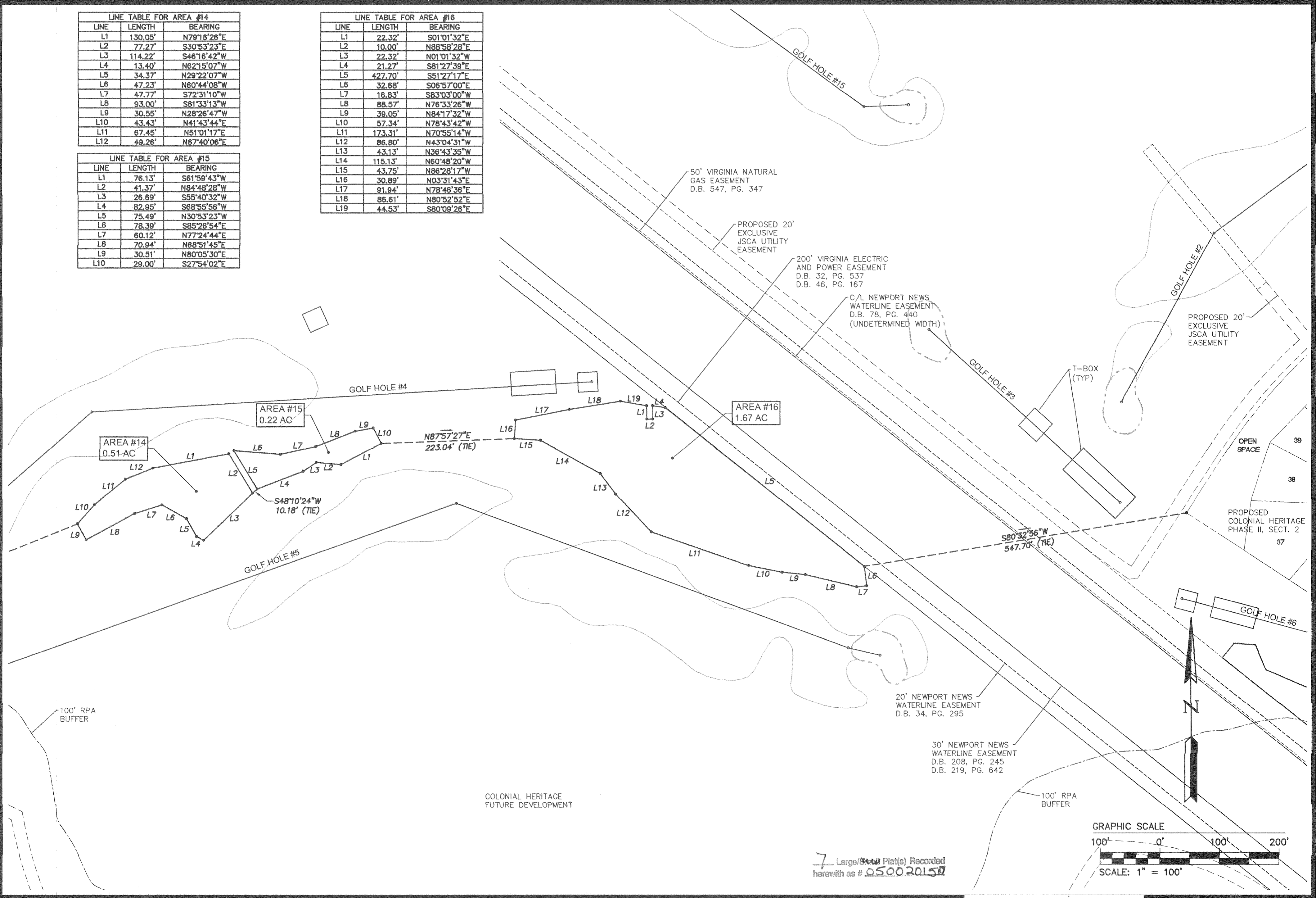
LINE	LENGTH	BEARING
L1	130.05'	N79°16'26"E
L2	77.27'	S30°53'23"E
L3	114.22'	S46°16'42"W
L4	13.40'	N62°15'07"W
L5	34.37'	N29°22'07"W
L6	47.23'	N60°44'08"W
L7	47.77'	S72°31'10"W
L8	93.00'	S61°33'13"W
L9	30.55'	N28°26'47"W
L10	43.43'	N41°43'44"E
L11	67.45'	N51°01'17"E
L12	49.26'	N67°40'06"E

LINE TABLE FOR AREA #15

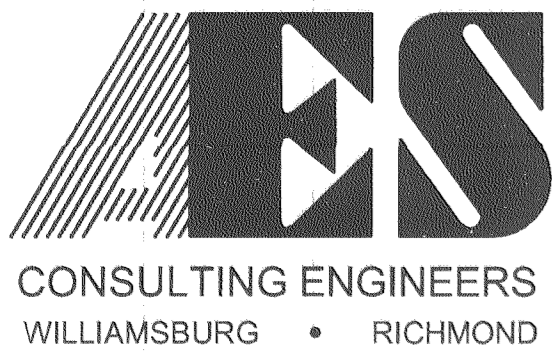
LINE	LENGTH	BEARING
L1	76.13'	S61°59'43"W
L2	41.37'	N84°48'28"W
L3	26.69'	S55°40'32"W
L4	82.95'	S68°55'56"W
L5	75.49'	N30°53'23"W
L6	78.39'	S85°26'54"E
L7	60.12'	N77°24'44"E
L8	70.94'	N68°51'45"E
L9	30.51'	N80°05'30"E
L10	29.00'	S27°54'02"E

LINE TABLE FOR AREA #16

LINE	LENGTH	BEARING
L1	22.32'	S01°01'32"E
L2	10.00'	N88°58'28"E
L3	22.32'	N01°01'32"W
L4	21.27'	S81°27'39"E
L5	427.70'	S51°27'17"E
L6	32.68'	S06°57'00"E
L7	16.83'	S83°03'00"W
L8	88.57'	N76°33'26"W
L9	39.05'	N84°17'32"W
L10	57.34'	N78°43'42"E
L11	173.31'	N70°55'14"W
L12	86.80'	N43°04'31"W
L13	43.13'	N36°43'35"W
L14	115.13'	N60°48'20"W
L15	43.75'	N86°28'17"W
L16	30.89'	N03°31'43"E
L17	91.94'	N78°46'36"E
L18	86.61'	N80°52'52"E
L19	44.53'	S80°09'26"E



S:\Jobs\888111-A\_Golf\dwg\Plats\8881-11p02.dwg, 9/8/2004 10:33:17 AM, heb



5248 Olde Towne Road, Suite 1  
 Williamsburg, Virginia 23188  
 (757) 253-0040  
 Fax (757) 220-8994

PLAT OF NATURAL OPEN SPACE  
 & CONSERVATION EASEMENTS  
 COLONIAL HERITAGE  
 PORTIONS OF GOLF COURSE HOLES 1-18  
 FOR CONVEYANCE TO JAMES CITY COUNTY

STONEHOUSE DISTRICT JAMES CITY COUNTY VIRGINIA



City of Williamsburg & County of James City Circuit Court: This PLAT was recorded on 8-26-2005	
at 12:45 PM, PG. 1	PG. 1
DOCUMENT # 050020150	
BETSY B. WOOLRIDGE, CLERK	
Betsy B. Woolridge Clerk	
1 9/7/04	REVISED PER COUNTY COMMENTS HWP
No. DATE	REVISION / COMMENT / NOTE BY

Designed AES	Drawn AES
Scale 1"=100'	Date 5/14/04
Project No. 8881-11H	
Drawing No. 2 OF 7	



#050020150

LINE TABLE FOR AREA #18

LINE	LENGTH	BEARING
L1	45.25'	S23°03'52"E
L2	154.67'	S66°48'03"E
L3	75.36'	S50°47'37"E
L4	27.16'	S65°41'34"E
L5	212.32'	S51°31'38"E
L6	23.36'	S69°09'20"E
L7	10.00'	S21°28'02"E
L8	91.73'	S88°31'58"W
L9	517.61'	N51°23'19"W
L10	30.57'	N38°28'22"E
L11	36.12'	S86°22'49"E

LINE TABLE FOR AREA #21

LINE	LENGTH	BEARING
L1	42.59'	N67°54'35"E
L2	60.17'	N83°53'00"E
L3	59.33'	N81°15'48"E
L4	29.88'	S80°03'43"E
L5	20.58'	S07°01'25"E
L6	50.21'	S24°56'44"W
L7	80.09'	S56°37'04"W
L8	9.03'	S71°52'51"W
L9	65.41'	S63°20'40"W
L10	107.04'	N31°22'22"W
L11	26.15'	N79°54'44"W
L12	12.33'	N70°03'08"E
L13	9.61'	N54°21'32"E
L14	18.50'	N47°59'19"E
L15	7.06'	N54°47'47"E
L16	10.25'	N61°19'35"E
L17	30.92'	N70°16'47"E
L18	24.46'	N73°25'13"E
L19	27.70'	N00°27'47"W
L20	17.19'	N44°41'10"W
L21	43.37'	N09°32'53"E
L22	28.96'	N40°35'08"E
L23	31.39'	N64°41'05"E
L24	14.72'	N10°34'25"E
L25	18.82'	N40°46'39"W
L26	29.68'	N47°27'48"W
L27	79.87'	N20°34'02"W
L28	34.06'	N04°11'17"E
L29	16.98'	N02°54'29"W
L30	73.50'	N87°05'31"E
L31	53.87'	S78°54'24"E
L32	57.86'	S61°48'28"E
L33	61.05'	N87°49'54"E
L34	47.99'	S46°45'05"E
L35	34.58'	S73°58'08"E
L36	41.96'	S89°42'25"E
L37	88.70'	N74°28'26"E
L38	28.90'	N58°04'58"E
L39	72.14'	S79°21'26"E

CONT. LINE TABLE FOR AREA #21

LINE	LENGTH	BEARING
L40	42.64'	N81°48'18"E
L41	73.61'	N57°03'11"E
L42	25.82'	S10°57'02"E
L43	10.00'	N79°02'58"E
L44	27.99'	N10°57'02"W

LINE TABLE FOR AREA #23

LINE	LENGTH	BEARING
L1	122.77'	N68°31'58"E
L2	336.30'	S88°32'19"E
L3	26.55'	S21°06'49"W
L4	35.48'	N28°24'28"W
L5	84.47'	S60°55'26"W
L6	167.29'	N51°23'19"W

LINE TABLE FOR AREA #24

LINE	LENGTH	BEARING
L1	102.32'	S88°32'19"E
L2	97.13'	S31°22'22"E
L3	163.06'	N66°30'29"W
L4	27.01'	N21°06'49"E

LINE TABLE FOR AREA #25

LINE	LENGTH	BEARING
L1	49.44'	N29°04'34"W
L2	174.89'	S66°30'29"E
L3	19.84'	N70°15'31"E
L4	49.87'	S31°22'22"E
L5	8.52'	S81°21'38"W
L6	35.81'	N68°26'52"W
L7	31.33'	N85°13'52"W
L8	44.22'	N81°26'53"W
L9	64.62'	S53°31'03"W
L10	24.67'	S66°30'44"W
L11	32.17'	S69°44'21"W
L12	26.48'	S75°47'30"W
L13	47.37'	N51°41'25"W
L14	87.24'	S85°52'54"W
L15	41.24'	S55°10'53"W

LINE TABLE FOR AREA #26

LINE	LENGTH	BEARING
L1	151.33'	N31°22'22"W
L2	65.41'	N63°20'40"E
L3	9.03'	N71°52'51"E
L4	28.27'	S57°23'16"E
L5	30.86'	S32°36'44"W
L6	35.19'	N85°29'45"W
L7	38.58'	S80°38'06"W
L8	32.55'	S32°32'57"W
L9	33.97'	S23°42'59"W
L10	48.56'	S11°45'40"W
L11	11.97'	S84°04'38"W
L12	30.83'	S43°20'26"W
L13	33.22'	S64°22'29"W
L14	92.78'	S23°37'13"W
L15	44.44'	S70°13'15"W
L16	39.41'	S41°08'31"W
L17	48.37'	S84°31'26"W
L18	53.19'	S40°45'29"W
L19	64.72'	S85°16'33"W
L20	24.02'	N74°38'21"W
L21	30.94'	S87°52'34"W
L22	22.52'	S68°32'34"W
L23	27.90'	N63°07'41"W
L24	35.12'	S47°51'45"W

CURVE TABLE FOR AREA #21

CURVE	DELTA	RADIUS	ARC	TANGENT	CHORD	CHORD BEARING
C1	15°20'33"	455.00	121.84	61.29	121.47	S64°17'20"W
C2	15°15'48"	445.00	118.55	59.63	118.19	S64°14'57"W
C3	8°32'11"	505.00	75.24	37.69	75.17	S67°36'46"W
C4	12°32'39"	455.00	99.62	50.01	99.42	S57°04'20"W
C5	20°05'45"	442.71	155.27	78.44	154.48	S51°15'22"W
C6	13°57'53"	1012.77	246.78	124.01	246.17	S80°45'40"W

CURVE TABLE FOR AREA #23

CURVE	DELTA	RADIUS	ARC	TANGENT	CHORD	CHORD BEARING
C1	11°15'15"	1240.00	243.56	122.17	243.17	S64°11'51"W

CURVE TABLE FOR AREA #24

CURVE	DELTA	RADIUS	ARC	TANGENT	CHORD	CHORD BEARING
C1	0°48'19"	985.02	13.84	6.92	13.84	S70°18'46"W

CURVE TABLE FOR AREA #25

CURVE	DELTA	RADIUS	ARC	TANGENT	CHORD	CHORD BEARING
C1	11°36'11"	1230.00	249.09	124.97	248.66	N64°20'36"E

CURVE TABLE FOR AREA #26

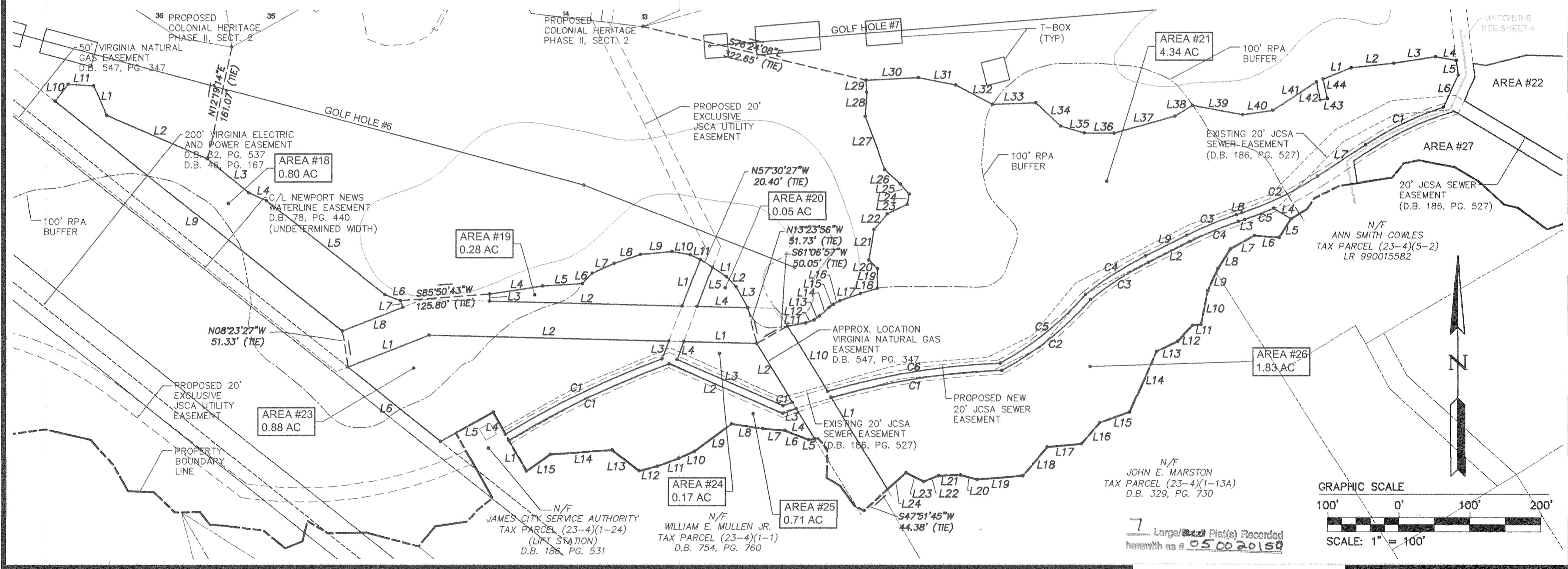
CURVE	DELTA	RADIUS	ARC	TANGENT	CHORD	CHORD BEARING
C1	13°56'23"	1002.77	243.97	122.59	243.37	S80°54'21"W
C2	20°17'17"	452.71	160.30	81.00	159.47	N51°27'35"E
C3	12°26'10"	445.00	96.60	48.49	96.41	S57°07'33"W
C4	8°32'11"	495.00	73.75	36.94	73.68	S67°36'46"W
C5	5°35'37"	455.00	44.42	22.23	44.40	N69°05'02"E

LINE TABLE FOR AREA #19

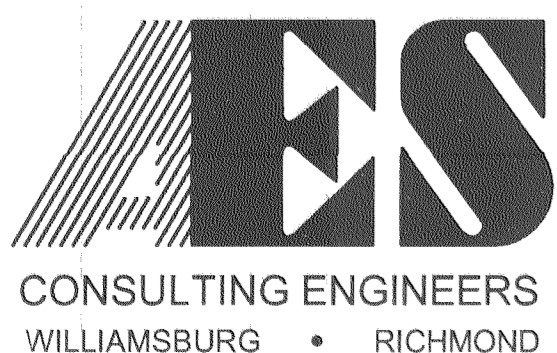
LINE	LENGTH	BEARING
L1	70.08'	S21°06'49"W
L2	270.23'	N88°32'19"W
L3	10.00'	N01°27'41"E
L4	75.20'	N81°20'12"E
L5	56.06'	N86°28'10"E
L6	19.51'	N42°14'06"E
L7	33.83'	N65°42'51"E
L8	38.72'	N71°17'38"E
L9	44.49'	N84°40'38"E
L10	25.93'	S80°16'15"E
L11	15.89'	S64°36'19"E

LINE TABLE FOR AREA #20

LINE	LENGTH	BEARING
L1	24.13'	S56°27'02"E
L2	19.37'	S43°52'09"E
L3	33.74'	S29°07'11"E
L4	71.20'	N88°32'19"W
L5	58.91'	N21°06'49"E



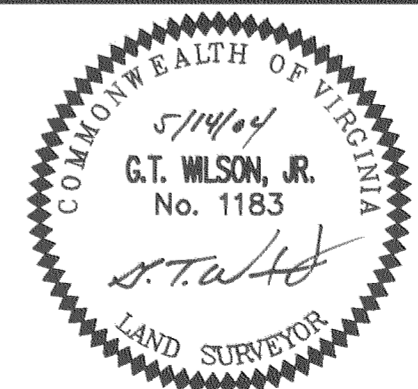
S:\Jobs\888111-A\_Golf.dwg\Plats\8881-11p03.dwg, 9/8/2004 10:36:36 AM, heb



5248 Olde Towne Road, Suite 1  
Williamsburg, Virginia 23188  
(757) 253-0040  
Fax (757) 220-8994

**PLAT OF NATURAL OPEN SPACE  
& CONSERVATION EASEMENTS  
COLONIAL HERITAGE**  
PORTIONS OF GOLF COURSE HOLES 1-18  
FOR CONVEYANCE TO JAMES CITY COUNTY

STONEHOUSE DISTRICT      JAMES CITY COUNTY      VIRGINIA

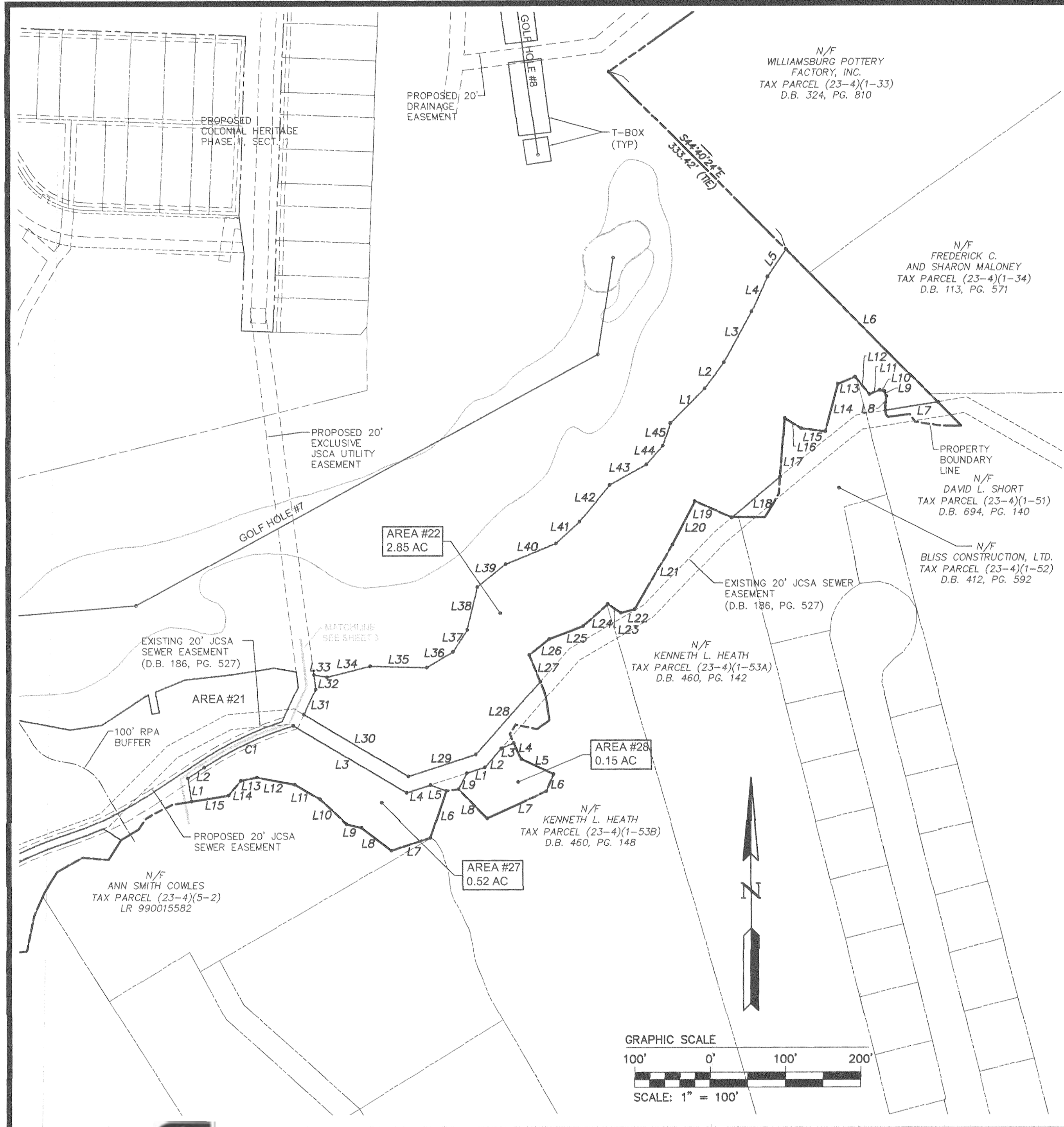


City of Williamsburg & County of James City	
Circuit Court:	This PLAT was recorded on 8-26-2005
at 12:45 PM, PG. 1	
DOCUMENT # 050020150	
BETSY B. WOOLRIDGE, CLERK	
<i>Betsy B. Woolridge</i> Clerk	
1 9/7/04	REVISED PER COUNTY COMMENTS
No. DATE	REVISION / COMMENT / NOTE
	HWP
	BY

Designed AES	Drawn AES
Scale 1"=100'	Date 5/14/04
Project No. 8881-11H	
Drawing No. 3 OF 7	



#050020150



LINE TABLE FOR AREA #22

LINE	LENGTH	BEARING
L1	65.03'	N44°43'24"E
L2	43.69'	N36°48'45"E
L3	76.93'	N28°34'31"E
L4	51.03'	N24°05'09"E
L5	43.83'	N34°18'36"E
L6	286.62'	S44°40'24"E
L7	70.49'	S80°55'40"W
L8	19.15'	N03°55'04"E
L9	7.12'	N22°08'32"W
L10	6.00'	N77°20'40"W
L11	14.98'	S68°00'58"W
L12	30.24'	N39°08'52"W
L13	24.86'	S67°33'24"W
L14	65.19'	S15°05'34"W
L15	32.32'	N83°06'18"W
L16	25.79'	N57°43'21"W
L17	78.63'	S04°18'02"W
L18	84.08'	S50°05'45"W
L19	53.76'	N66°02'10"W
L20	65.06'	S27°32'28"W
L21	99.46'	S30°03'19"W
L22	18.94'	S75°17'18"W
L23	20.99'	N55°57'47"W
L24	44.02'	S47°57'01"W
L25	48.98'	S69°12'24"W
L26	34.02'	S51°23'31"W
L27	38.56'	S22°18'34"E
L28	128.85'	S41°31'19"W
L29	94.79'	S71°59'57"W
L30	161.35'	N59°07'16"W
L31	36.80'	N24°56'44"E
L32	19.44'	N07°23'33"W
L33	17.81'	S80°03'43"E
L34	59.06'	N75°45'20"E
L35	75.51'	S88°31'01"E
L36	40.69'	N58°58'52"E
L37	35.00'	N33°04'59"E
L38	58.60'	N13°31'47"E
L39	48.35'	N50°35'25"E
L40	72.26'	N67°42'30"E
L41	42.64'	N47°21'31"E
L42	63.57'	N39°57'47"E
L43	55.82'	N60°45'34"E
L44	33.47'	N41°10'46"E
L45	31.26'	N17°24'41"E

LINE TABLE FOR AREA #27

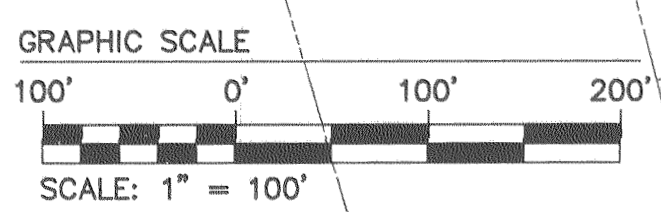
LINE	LENGTH	BEARING
L1	31.35'	N09°17'16"W
L2	26.37'	N56°37'04"E
L3	174.78'	S59°07'16"E
L4	33.35'	N71°59'57"E
L5	22.61'	S69°32'03"E
L6	65.09'	S18°45'07"W
L7	54.53'	S71°56'10"W
L8	50.05'	N52°31'13"W
L9	20.40'	N76°38'37"W
L10	48.57'	N47°41'52"W
L11	38.67'	N59°48'47"W
L12	51.22'	N79°03'19"W
L13	21.97'	S78°26'11"W
L14	25.34'	S39°48'19"W
L15	49.95'	S80°42'44"W

LINE TABLE FOR AREA #28

LINE	LENGTH	BEARING
L1	25.11'	N71°59'57"E
L2	33.81'	N41°31'19"E
L3	18.23'	N66°15'03"E
L4	23.64'	S23°44'57"E
L5	47.37'	S64°59'31"E
L6	25.04'	S23°30'17"W
L7	86.40'	S65°19'46"W
L8	54.59'	N44°14'50"W
L9	23.93'	N27°47'21"E

CURVE TABLE FOR AREA #27

CURVE	DELTA	RADIUS	ARC	TANGENT	CHORD	CHORD BEARING
C1	16°58'32"	445.00	131.84	66.41	131.38	N65°06'20"E



Large/Small Plats Recorded herewith as # 050020150

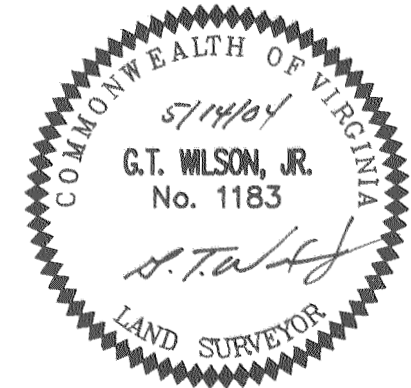
S:\Jobs\888111-A\_Golf.dwg\Plats\8881-11p04.dwg, 9/8/2004 10:38:42 AM, heb

CONSULTING ENGINEERS  
WILLIAMSBURG • RICHMOND

5248 Olde Towne Road, Suite 1  
Williamsburg, Virginia 23188  
(757) 253-0040  
Fax (757) 220-8994

PLAT OF NATURAL OPEN SPACE  
& CONSERVATION EASEMENTS  
COLONIAL HERITAGE  
PORTIONS OF GOLF COURSE HOLES 1-18  
FOR CONVEYANCE TO JAMES CITY COUNTY

STONEHOUSE DISTRICT      JAMES CITY COUNTY      VIRGINIA



City of Williamsburg & County of James City  
Circuit Court: This PLAT was recorded on  
8-26-2005  
at 12:45 PM, PG. 1  
DOCUMENT # 050020150  
BETSY B. WOOLRIDGE, CLERK  
*Betsy B. Woolridge* Clerk

No.	DATE	REVISION / COMMENT / NOTE	BY
1	9/7/04	REVISED PER COUNTY COMMENTS	HWP

Designed	Drawn
AES	AES
Scale	Date
1"=100'	5/14/04
Project No.	
8881-11H	
Drawing No.	
4 OF 7	



#050020150

LINE TABLE FOR AREA #2		
LINE	LENGTH	BEARING
L1	51.75'	N40°20'19"E
L2	35.73'	N57°46'41"E
L3	24.60'	N40°54'03"E
L4	23.29'	N88°12'31"E
L5	29.22'	S73°43'05"E
L6	75.01'	N74°31'26"E
L7	37.09'	N16°47'16"E
L8	24.82'	N01°54'41"W
L9	37.47'	N65°24'15"E
L10	37.71'	N46°10'17"E
L11	51.33'	N48°12'42"E
L12	29.66'	N55°10'50"E
L13	30.39'	N24°14'04"W
L14	41.24'	N49°12'57"E
L15	25.15'	N60°38'08"E
L16	32.14'	N25°32'12"W
L17	32.24'	N37°55'58"E
L18	20.45'	N57°32'12"E
L19	29.78'	N47°05'25"E
L20	51.68'	N58°04'45"E
L21	15.18'	N36°55'38"E
L22	48.57'	N47°49'25"E
L23	40.22'	N01°08'14"E
L24	52.18'	N32°50'53"E
L25	32.83'	N62°14'42"E
L26	56.06'	N44°00'13"E
L27	31.59'	N05°26'19"E
L28	28.75'	N49°27'47"E
L29	30.82'	N09°42'49"E
L30	22.71'	N47°09'32"E
L31	29.48'	N75°10'24"E
L32	33.05'	N37°37'13"E
L33	21.56'	S45°22'30"E
L34	355.05'	S32°18'04"W
L35	292.22'	S39°28'45"W
L36	200.64'	S65°19'12"W
L37	10.06'	N24°40'48"W

LINE TABLE FOR AREA #3		
LINE	LENGTH	BEARING
L1	105.55'	S73°55'45"W
L2	85.67'	S65°45'40"W
L3	63.71'	S39°51'37"W
L4	48.23'	S52°22'12"W
L5	34.00'	S37°50'56"W
L6	35.59'	S22°10'34"W
L7	48.82'	S34°43'19"W
L8	278.79'	S70°03'44"W
L9	62.22'	S14°02'35"E
L10	25.13'	S31°28'06"W
L11	216.99'	N69°18'47"W
L12	136.70'	N66°51'26"E
L13	187.04'	N38°34'11"E
L14	298.71'	N65°19'12"E
L15	292.84'	N39°28'45"E
L16	353.49'	N32°18'04"E
L17	272.94'	S45°22'30"E
L18	65.55'	S60°26'34"E
L19	38.91'	S29°33'26"W
L20	49.93'	N78°18'28"W
L21	97.07'	S67°57'35"W
L22	69.74'	S88°38'00"W
L23	17.92'	S42°52'22"W
L24	17.43'	S56°12'39"W
L25	15.74'	S55°58'41"W
L26	15.42'	S35°52'54"W
L27	55.87'	S46°12'35"W
L28	53.51'	S46°05'01"W
L29	108.82'	S45°05'46"W
L30	39.50'	S38°38'02"W
L31	64.46'	S36°17'56"W
L32	57.46'	S31°27'22"W
L33	23.41'	S42°06'14"W
L34	20.83'	S55°54'01"W
L35	26.66'	S32°44'29"W
L36	15.85'	S60°58'06"W
L37	18.68'	S64°55'48"W
L38	20.67'	S29°11'20"W
L39	25.09'	S58°49'21"W

LINE TABLE FOR AREA #4		
LINE	LENGTH	BEARING
L1	134.14'	N86°13'08"E
L2	78.88'	S05°15'33"E
L3	43.02'	S17°41'15"E
L4	48.07'	N75°42'36"W
L5	51.30'	N53°44'06"W
L6	56.11'	N84°27'06"W
L7	38.59'	N32°01'13"W
L8	40.28'	N65°49'27"W
L9	20.35'	N09°38'27"E
L10	43.88'	S81°51'07"E

LINE TABLE FOR AREA #6		
LINE	LENGTH	BEARING
L1	228.01'	S83°43'00"E
L2	125.78'	S78°33'17"E
L3	38.83'	S03°37'44"W
L4	354.50'	N86°22'16"W
L5	91.51'	S05°08'16"E
L6	48.82'	S52°15'06"W
L7	32.54'	N37°40'45"W
L8	32.43'	N45°24'49"E
L9	35.66'	N09°24'52"E
L10	47.78'	N32°14'03"W
L11	49.50'	N16°37'12"E
L12	41.99'	N67°50'41"E

LINE TABLE FOR AREA #5		
LINE	LENGTH	BEARING
L1	29.96'	S29°32'11"E
L2	37.28'	S60°27'49"W
L3	47.48'	S67°49'17"W
L4	69.72'	S53°30'42"W
L5	52.79'	S07°43'29"W
L6	37.48'	S72°18'45"W
L7	53.00'	N17°41'15"W
L8	78.65'	N05°15'33"W
L9	188.08'	N77°30'01"E

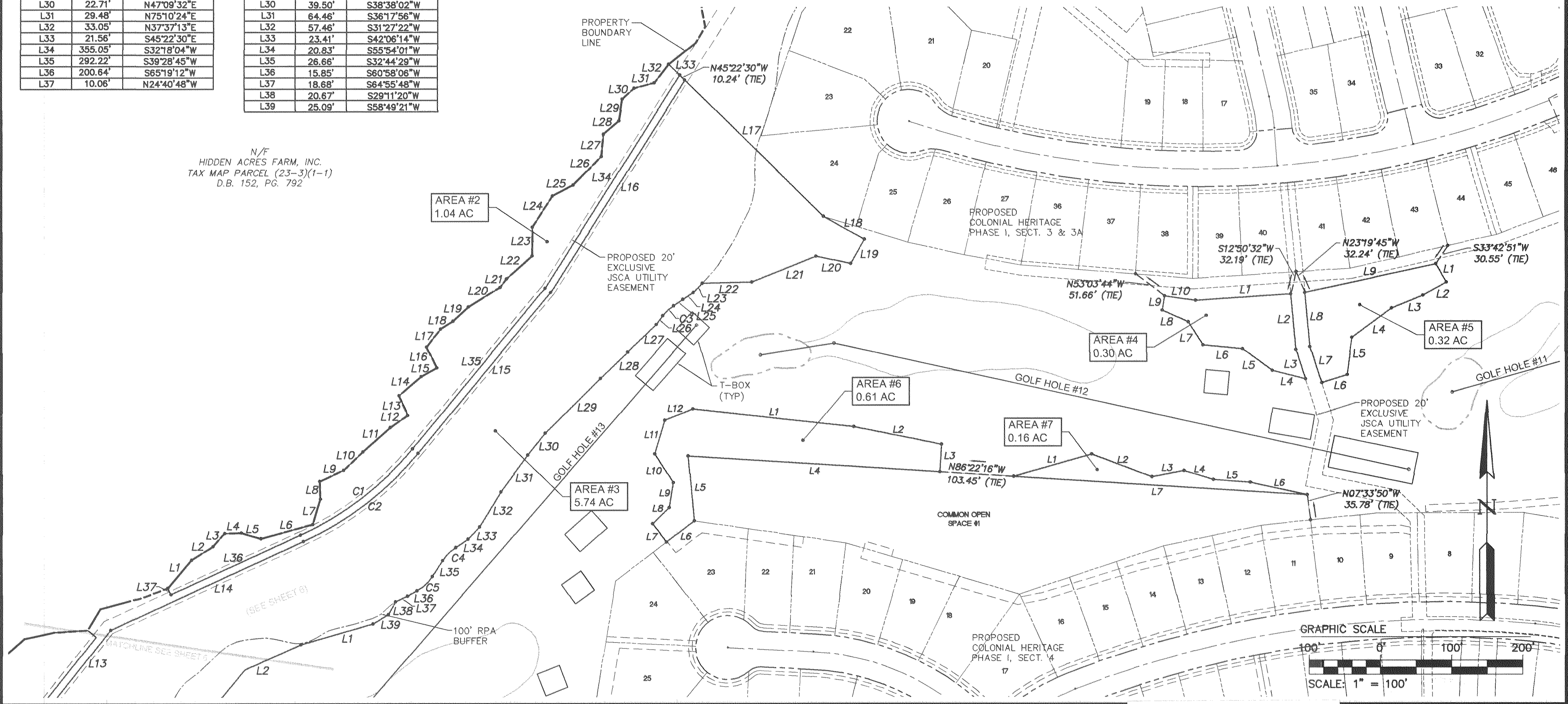
LINE TABLE FOR AREA #7		
LINE	LENGTH	BEARING
L1	114.68'	N74°02'40"E
L2	90.03'	S69°05'48"E
L3	46.39'	N79°13'10"E
L4	42.82'	S72°52'36"E
L5	52.08'	S85°38'48"E
L6	81.85'	S77°30'50"E
L7	413.54'	N86°22'16"W

CURVE TABLE FOR AREA #2						
CURVE	DELTA	RADIUS	ARC	TANGENT	CHORD	CHORD BEARING
C1	25°30'27"	445.00	200.70	102.09	199.00	S52°23'58"W

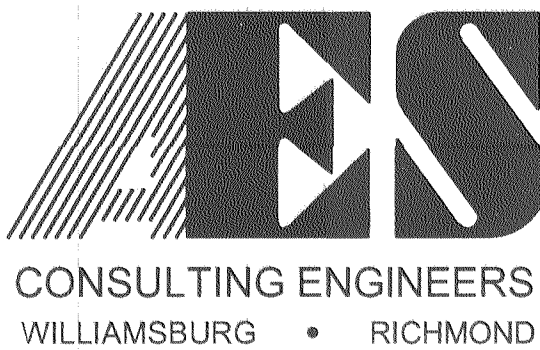
  

CURVE TABLE FOR AREA #3						
CURVE	DELTA	RADIUS	ARC	TANGENT	CHORD	CHORD BEARING
C1	26°25'43"	478.65	220.79	112.39	218.83	N52°08'04"E
C2	25°50'27"	455.00	205.21	104.38	203.47	N52°23'58"E
C3	19°57'37"	60.00	20.90	10.56	20.80	S47°17'26"W
C4	25°15'33"	60.00	26.45	13.44	26.24	S45°22'15"W
C5	28°13'38"	60.00	29.56	15.09	29.26	S46°51'18"W

Large/Small Plat(s) Recorded herewith as # 050020150



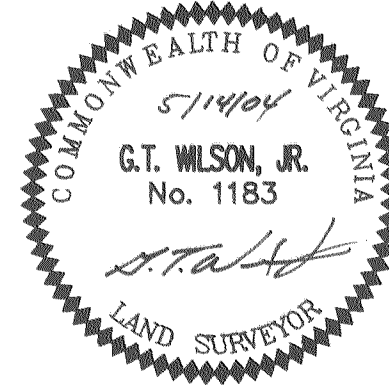
S:\Jobs\888111-A\_Golf.dwg\Plats\8881-11p05.dwg, 9/8/2004 11:17:58 AM, heb



5248 Olde Towne Road, Suite 1  
Williamsburg, Virginia 23188  
(757) 253-0040  
Fax (757) 220-8994

**PLAT OF NATURAL OPEN SPACE  
& CONSERVATION EASEMENTS  
COLONIAL HERITAGE**  
PORTIONS OF GOLF COURSE HOLES 1-18  
FOR CONVEYANCE TO JAMES CITY COUNTY

STONEHOUSE DISTRICT      JAMES CITY COUNTY      VIRGINIA



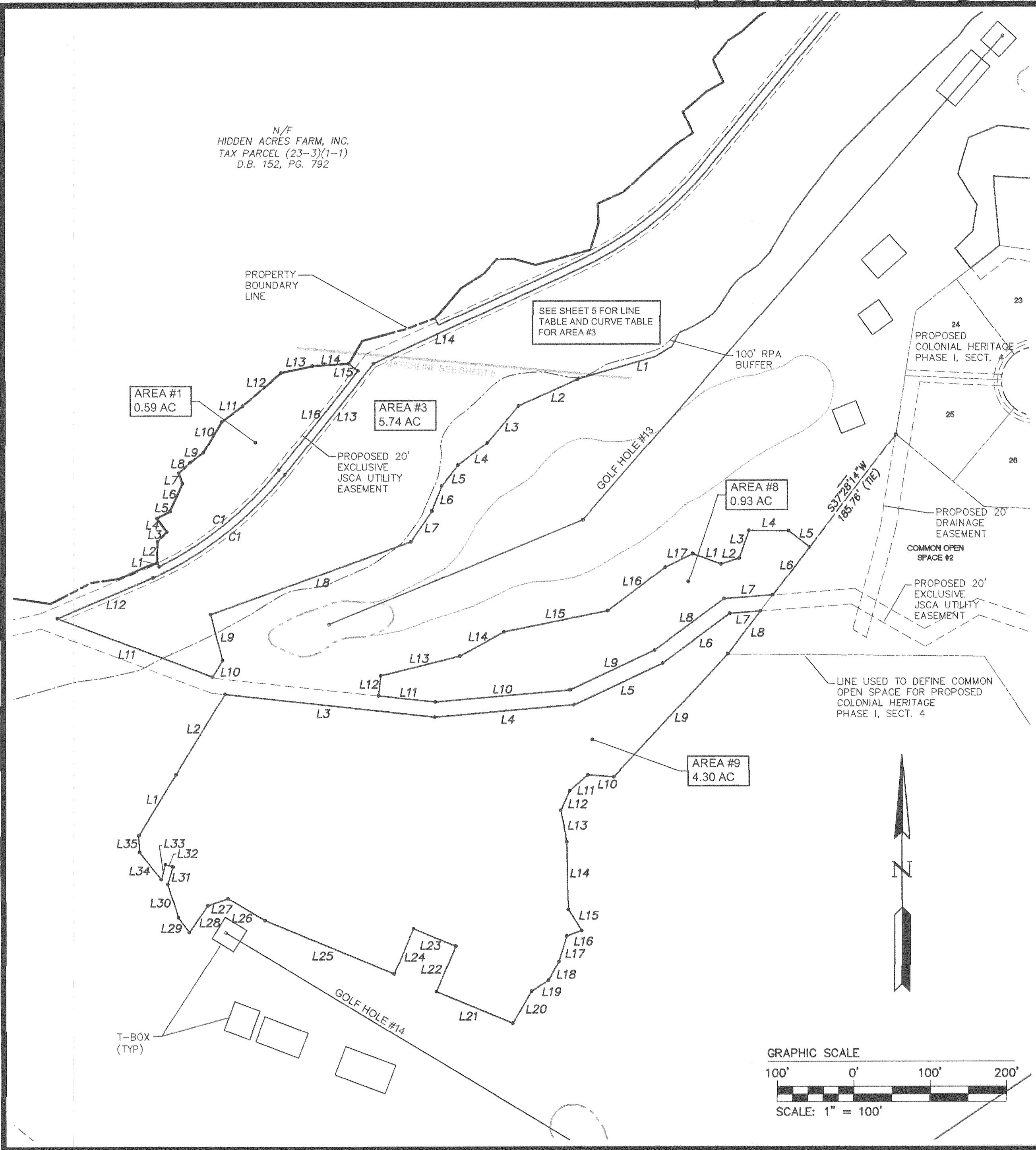
City of Williamsburg & County of James City	
Circuit Court: This PLAT was recorded on 8-26-2005	
at 12:45 P.M. PB	PG
DOCUMENT # 050020150	
BETSY B. WOOLRIDGE, CLERK	
<i>Betsy B. Woolridge</i> Clerk	
1	9/7/04
No.	DATE
	REVISION / COMMENT / NOTE
	HWP
	BY

Designed AES	Drawn AES
Scale 1"=100'	Date 5/14/04
Project No. 8881-11H	
Drawing No. 5 OF 7	



#050020150

N/F  
HIDDEN ACRES FARM, INC.  
TAX PARCEL (23-3)(1-1)  
D.B. 152, PG. 792



LINE TABLE FOR AREA #1

LINE	LENGTH	BEARING
L1	5.70'	N26°12'56"W
L2	27.27'	N01°01'06"E
L3	17.70'	N43°39'02"E
L4	21.72'	N36°01'49"W
L5	19.64'	N61°48'06"E
L6	40.02'	N24°20'47"E
L7	14.23'	N19°49'49"W
L8	20.17'	N46°54'16"E
L9	21.96'	N53°04'55"E
L10	47.28'	N30°19'00"E
L11	34.25'	N53°01'07"E
L12	66.74'	N49°23'42"E
L13	42.19'	N77°45'44"E
L14	47.81'	N86°19'08"E
L15	15.20'	S51°25'49"E
L16	166.69'	S38°34'11"W

LINE TABLE FOR AREA #8

LINE	LENGTH	BEARING
L1	39.36'	S69°53'29"E
L2	24.96'	N71°53'24"E
L3	38.04'	N19°52'38"E
L4	51.74'	S89°34'03"E
L5	34.91'	S52°31'46"E
L6	78.74'	S37°28'14"W
L7	64.04'	S85°36'24"W
L8	113.40'	S53°28'41"W
L9	122.37'	S64°48'32"W
L10	177.23'	S84°54'40"W
L11	74.82'	N83°41'23"W
L12	26.42'	N06°18'37"E
L13	106.70'	N76°09'12"E
L14	66.54'	N61°24'57"E
L15	138.63'	N78°26'57"E
L16	93.98'	N52°41'10"E
L17	40.09'	N63°44'30"E

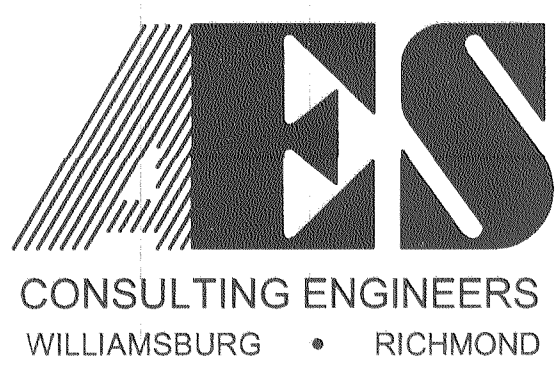
LINE TABLE FOR AREA #9

LINE	LENGTH	BEARING
L1	93.17'	N31°28'43"E
L2	123.52'	N31°28'43"E
L3	277.05'	S83°41'23"E
L4	182.77'	N84°54'40"E
L5	127.90'	N64°48'32"E
L6	109.62'	N53°28'41"E
L7	40.36'	N85°36'24"E
L8	70.80'	S37°28'14"W
L9	219.68'	S42°48'34"W
L10	34.35'	N85°38'05"W
L11	31.62'	S48°30'34"W
L12	27.92'	S24°49'48"W
L13	42.24'	S11°07'54"E
L14	88.67'	S00°59'11"E
L15	32.72'	S31°54'42"E
L16	20.71'	S70°11'33"W
L17	35.24'	S16°49'39"W
L18	27.94'	S28°16'36"W
L19	26.58'	S57°11'07"W
L20	48.31'	S30°15'13"W
L21	108.25'	N67°26'49"W
L22	64.49'	N22°36'17"E
L23	60.00'	N67°23'43"W
L24	64.48'	S22°36'17"W
L25	183.48'	N67°23'43"W
L26	56.17'	N59°03'02"W
L27	28.42'	S71°15'20"W
L28	42.78'	S34°57'10"W
L29	23.97'	N36°18'20"W
L30	45.86'	N16°46'49"W
L31	23.96'	N16°13'59"E
L32	10.00'	N73°46'01"W
L33	20.16'	S18°13'59"W
L34	45.45'	N38°49'37"W
L35	22.20'	N03°07'28"W

CURVE TABLE FOR AREA #1

CURVE	DELTA	RADIUS	ARC	TANGENT	CHORD	CHORD BEARING
C1	24°51'59"	468.65	203.21	103.23	201.62	N51°21'04"E

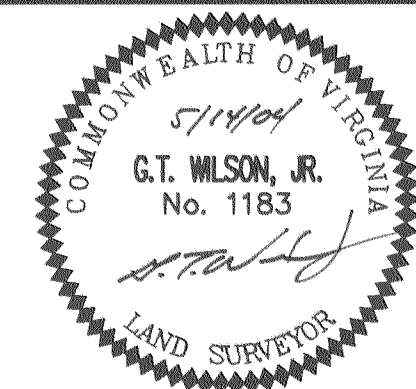
S:\Jobs\888111-A\_Golf.dwg\Plats\8881-11p06.dwg, 9/8/2004 11:34:50 AM, heb



5248 Olde Towne Road, Suite 1  
Williamsburg, Virginia 23188  
(757) 253-0040  
Fax (757) 220-8994

**PLAT OF NATURAL OPEN SPACE  
& CONSERVATION EASEMENTS  
COLONIAL HERITAGE**  
PORTIONS OF GOLF COURSE HOLES 1-18  
FOR CONVEYANCE TO JAMES CITY COUNTY

STONEHOUSE DISTRICT      JAMES CITY COUNTY      VIRGINIA



City of Williamsburg & County of James City  
Circuit Court: This PLAT was recorded on 8-26-2005  
at 12:45 PM, PG. 1  
DOCUMENT # 050020150  
BETSY B. WOOLRIDGE, CLERK  
*Betsy B. Woolridge* Clerk

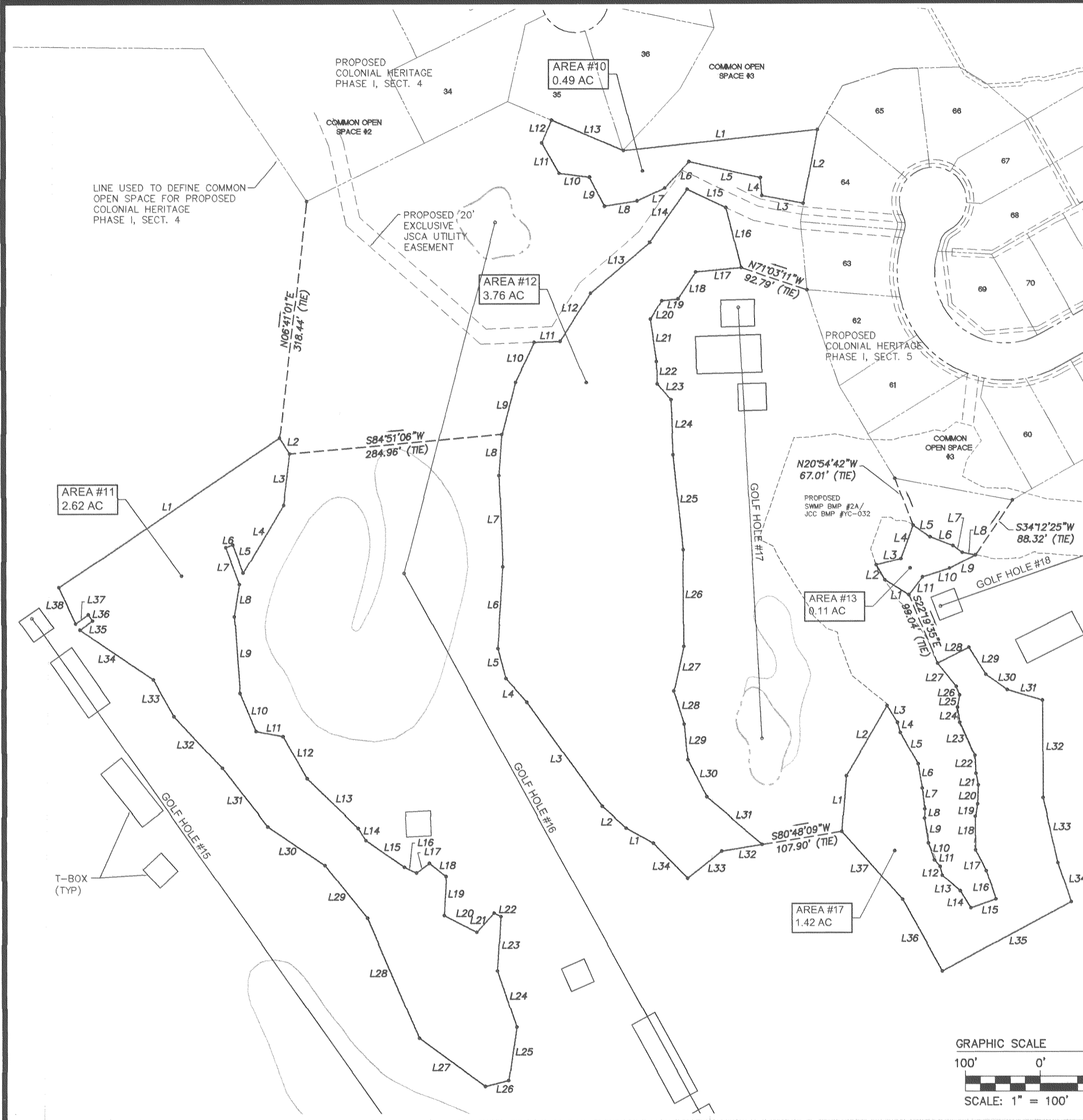
No.	DATE	REVISION / COMMENT / NOTE	BY
1	9/7/04	REVISED PER COUNTY COMMENTS	HWP

Designed	Drawn
AES	AES
Scale	Date
1"=100'	5/14/04
Project No.	
8881-11H	
Drawing No.	
6 OF 7	

Large/Small Plat(s) Recorded herewith as # \_\_\_\_\_



#050020150



LINE TABLE FOR AREA #10

LINE	LENGTH	BEARING
L1	260.50'	N83°53'58"E
L2	100.42'	S10°44'49"W
L3	56.23'	N79°28'13"W
L4	24.03'	N05°17'44"W
L5	98.15'	N77°12'22"W
L6	47.60'	S41°48'28"W
L7	40.75'	S65°12'56"W
L8	44.11'	S80°50'23"W
L9	43.87'	N27°41'48"W
L10	41.09'	N82°37'32"W
L11	46.94'	N29°21'57"W
L12	33.07'	N23°18'44"E
L13	104.55'	S67°02'48"E

LINE TABLE FOR AREA #12

LINE	LENGTH	BEARING
L1	41.34'	N60°59'35"W
L2	43.35'	N48°13'47"W
L3	171.30'	N35°44'14"W
L4	42.51'	N41°45'11"W
L5	41.42'	N15°01'25"W
L6	110.02'	N03°48'56"E
L7	122.03'	N02°16'12"W
L8	55.27'	N04°03'04"E
L9	71.59'	N14°36'34"E
L10	59.54'	N25°22'40"E
L11	34.85'	N88°00'10"E
L12	75.79'	N31°54'05"E
L13	104.68'	N49°23'47"E
L14	86.67'	N35°29'42"E
L15	57.27'	S64°42'27"E
L16	82.38'	S13°31'50"E
L17	61.11'	S84°31'06"W
L18	43.30'	S33°15'29"W
L19	21.78'	S83°29'37"W
L20	28.67'	S30°57'40"W
L21	57.16'	S08°00'00"E
L22	30.20'	S00°58'38"E
L23	27.85'	S41°03'47"E
L24	73.65'	S02°17'01"E
L25	127.47'	S05°48'32"E
L26	129.89'	S00°15'14"E
L27	60.89'	S12°11'55"W
L28	45.97'	S17°18'35"E
L29	47.69'	S05°12'06"E
L30	55.68'	S26°54'29"E
L31	97.73'	S49°29'11"E
L32	54.69'	S80°48'09"W
L33	58.27'	S51°27'12"W
L34	65.65'	N44°16'26"W

LINE TABLE FOR AREA #11

LINE	LENGTH	BEARING
L1	357.02'	N55°58'55"E
L2	25.07'	S32°19'08"E
L3	69.30'	S07°00'37"W
L4	105.35'	S30°53'59"W
L5	40.60'	N20°26'31"W
L6	10.00'	S88°45'26"W
L7	53.24'	S20°26'31"E
L8	43.94'	S09°07'19"W
L9	102.69'	S04°08'34"E
L10	54.84'	S22°53'23"E
L11	36.83'	S79°07'09"E
L12	64.74'	S29°08'43"E
L13	95.43'	S46°05'30"E
L14	19.16'	S32°09'50"E
L15	62.63'	S55°15'48"E
L16	18.04'	S84°06'13"E
L17	21.51'	N52°53'44"E
L18	28.38'	S51°38'42"E
L19	52.41'	S03°16'22"W
L20	48.92'	S62°38'13"E
L21	34.52'	N41°55'54"E
L22	10.37'	S63°28'43"E
L23	72.80'	S03°29'35"W
L24	79.18'	S18°41'57"E
L25	72.62'	S08°28'39"W
L26	32.05'	S75°46'08"W
L27	109.79'	N53°46'17"W
L28	174.89'	N23°17'41"W
L29	90.06'	N38°32'03"W
L30	92.45'	N55°50'37"W
L31	99.13'	N37°57'02"W
L32	94.46'	N43°01'27"W
L33	56.46'	N29°31'21"W
L34	118.35'	N55°59'15"W
L35	21.40'	N54°27'23"E
L36	10.00'	N35°32'37"W
L37	20.99'	S54°27'23"W
L38	53.69'	N24°30'06"W

LINE TABLE FOR AREA #13

LINE	LENGTH	BEARING
L1	38.01'	N57°50'34"W
L2	23.53'	N29°20'54"W
L3	33.49'	N75°58'50"E
L4	47.40'	N20°23'28"E
L5	26.57'	S55°24'42"E
L6	33.66'	S68°44'41"E
L7	15.43'	S54°24'13"E
L8	17.79'	S79°01'01"E
L9	38.41'	S62°30'00"W
L10	38.18'	S71°52'22"W
L11	30.12'	S37°10'25"W

LINE TABLE FOR AREA #17

LINE	LENGTH	BEARING
L1	74.14'	N04°27'27"E
L2	108.39'	N30°33'57"E
L3	26.29'	S32°04'41"E
L4	13.79'	S15°06'50"E
L5	47.83'	S29°15'19"E
L6	33.15'	S09°26'29"E
L7	28.27'	S06°44'06"E
L8	12.42'	S01°41'13"E
L9	32.84'	S08°34'37"E
L10	24.00'	S19°44'19"E
L11	11.39'	S41°09'32"E
L12	12.42'	S13°27'37"E
L13	31.32'	S48°31'54"E
L14	26.94'	S32°01'42"E
L15	35.56'	N70°26'19"E
L16	39.66'	N18°06'44"W
L17	31.39'	N26°57'45"W
L18	44.24'	N00°31'38"W
L19	16.95'	N09°08'42"E
L20	25.44'	N02°13'29"E
L21	15.74'	N11°35'31"W
L22	24.34'	N02°59'23"W
L23	48.13'	N24°09'33"W
L24	20.00'	N08°47'31"W
L25	16.74'	N10°07'30"E
L26	12.50'	N23°36'13"W
L27	39.88'	N38°41'03"W
L28	46.93'	N63°11'42"E
L29	42.72'	S32°01'19"E
L30	35.74'	S54°41'26"E
L31	49.12'	S73°24'53"E
L32	129.73'	S00°00'00"E
L33	88.91'	S13°02'03"E
L34	55.00'	S18°27'50"E
L35	195.67'	S61°42'58"W
L36	110.00'	N29°01'44"W
L37	121.56'	N41°35'39"W

GRAPHIC SCALE  
 100' 0' 100' 200'  
 SCALE: 1" = 100'

Large/Small Plat(s) Recorded herewith as # 050020150

S:\Jobs\888111-A Golf\dwg\Plats\8881-11p07.dwg, 9/8/2004 12:05:47 PM, heb

**CONSULTING ENGINEERS**  
 WILLIAMSBURG • RICHMOND

5248 Olde Towne Road, Suite 1  
 Williamsburg, Virginia 23188  
 (757) 253-0040  
 Fax (757) 220-8994

**PLAT OF NATURAL OPEN SPACE & CONSERVATION EASEMENTS COLONIAL HERITAGE**  
 PORTIONS OF GOLF COURSE HOLES 1-18 FOR CONVEYANCE TO JAMES CITY COUNTY

STONEHOUSE DISTRICT      JAMES CITY COUNTY      VIRGINIA

City of Williamsburg & County of James City  
 Circuit Court: This PLAT was recorded on 8-26-2005  
 at 12:45 PM, PB PG  
 DOCUMENT # 050020150  
 BETSY B. WOOLRIDGE, CLERK  
*Betsy Woolridge* Clerk

1	9/7/04	REVISED PER COUNTY COMMENTS	HWP
No.	DATE	REVISION / COMMENT / NOTE	BY

Designed AES	Drawn AES
Scale 1"=100'	Date 5/14/04
Project No. 8881-11H	
Drawing No. 7 OF 7	