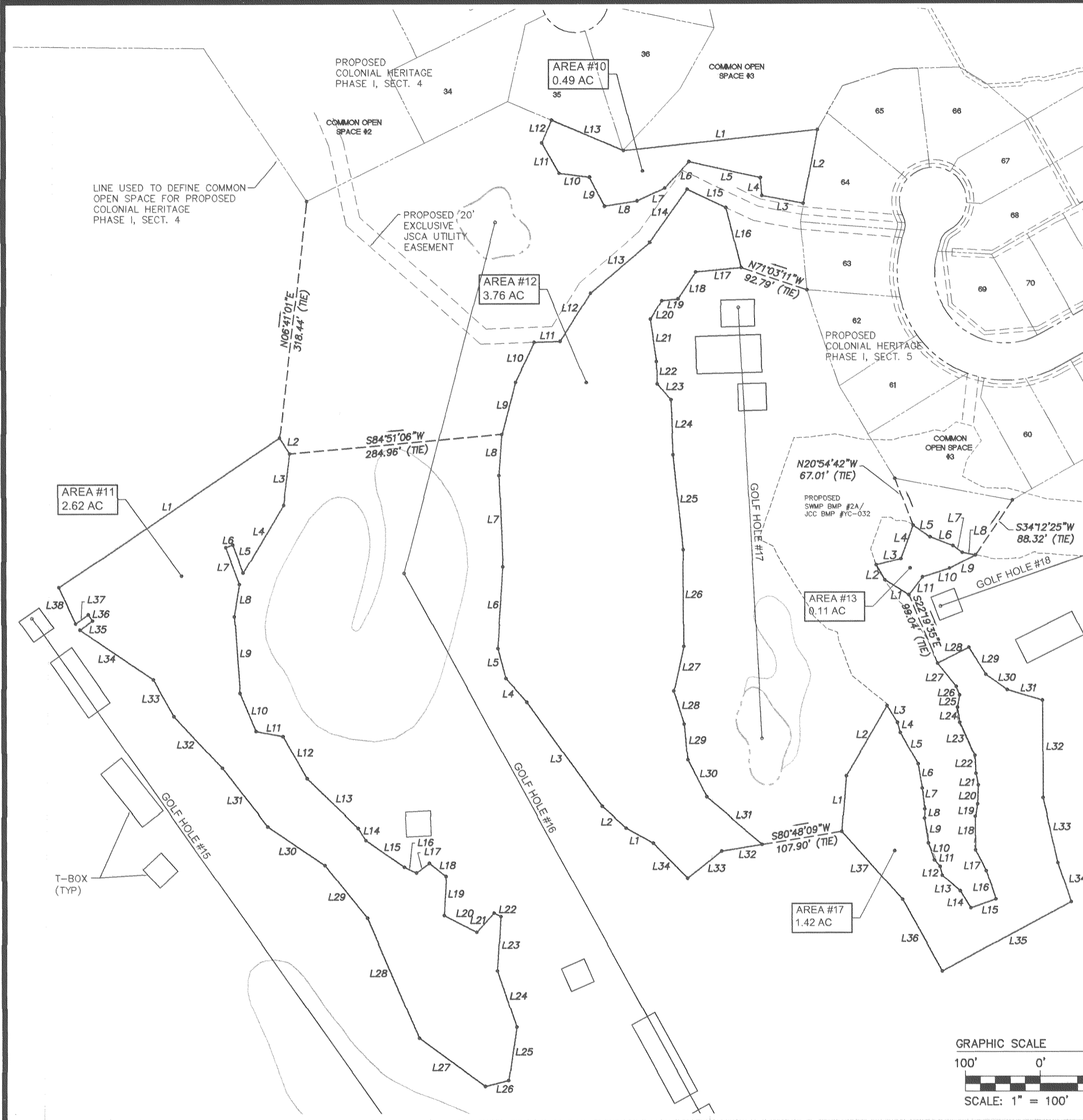


#050020150



LINE TABLE FOR AREA #10

LINE	LENGTH	BEARING
L1	260.50'	N83°53'58"E
L2	100.42'	S10°44'49"W
L3	56.23'	N79°28'13"W
L4	24.03'	N05°17'44"W
L5	98.15'	N77°12'22"W
L6	47.60'	S41°48'28"W
L7	40.75'	S65°12'56"W
L8	44.11'	S80°50'23"W
L9	43.87'	N27°41'48"W
L10	41.09'	N82°37'32"W
L11	46.94'	N29°21'57"W
L12	33.07'	N23°18'44"E
L13	104.55'	S67°02'48"E

LINE TABLE FOR AREA #12

LINE	LENGTH	BEARING
L1	41.34'	N60°59'35"W
L2	43.35'	N48°13'47"W
L3	171.30'	N35°44'14"W
L4	42.51'	N41°45'11"W
L5	41.42'	N15°01'25"W
L6	110.02'	N03°48'56"E
L7	122.03'	N02°16'12"W
L8	55.27'	N04°03'04"E
L9	71.59'	N14°36'34"E
L10	59.54'	N25°22'40"E
L11	34.85'	N88°00'10"E
L12	75.79'	N31°54'05"E
L13	104.68'	N49°23'47"E
L14	86.67'	N35°29'42"E
L15	57.27'	S64°42'27"E
L16	82.38'	S13°31'50"E
L17	61.11'	S84°31'06"W
L18	43.30'	S33°15'29"W
L19	21.78'	S83°29'37"W
L20	28.67'	S30°57'40"W
L21	57.16'	S08°00'00"E
L22	30.20'	S00°58'38"E
L23	27.85'	S41°03'47"E
L24	73.65'	S02°17'01"E
L25	127.47'	S05°48'32"E
L26	129.89'	S00°15'14"E
L27	60.89'	S12°11'55"W
L28	45.97'	S17°18'35"E
L29	47.69'	S05°12'06"E
L30	55.68'	S26°54'29"E
L31	97.73'	S49°29'11"E
L32	54.69'	S80°48'09"W
L33	58.27'	S51°27'12"W
L34	65.65'	N44°16'26"W

LINE TABLE FOR AREA #11

LINE	LENGTH	BEARING
L1	357.02'	N55°58'55"E
L2	25.07'	S32°19'08"E
L3	69.30'	S07°00'37"W
L4	105.35'	S30°53'59"W
L5	40.60'	N20°26'31"W
L6	10.00'	S88°45'26"W
L7	53.24'	S20°26'31"E
L8	43.94'	S09°07'19"W
L9	102.69'	S04°08'34"E
L10	54.84'	S22°53'23"E
L11	36.83'	S79°07'09"E
L12	64.74'	S29°08'43"E
L13	95.43'	S46°05'30"E
L14	19.16'	S32°09'50"E
L15	62.63'	S55°15'48"E
L16	18.04'	S84°06'13"E
L17	21.51'	N52°53'44"E
L18	28.38'	S51°38'42"E
L19	52.41'	S03°16'22"W
L20	48.92'	S62°38'13"E
L21	34.52'	N41°55'54"E
L22	10.37'	S63°28'43"E
L23	72.80'	S03°29'35"W
L24	79.18'	S18°41'57"E
L25	72.62'	S08°28'39"W
L26	32.05'	S75°46'08"W
L27	109.79'	N53°46'17"W
L28	174.89'	N23°17'41"W
L29	90.06'	N38°32'03"W
L30	92.45'	N55°50'37"W
L31	99.13'	N37°57'02"W
L32	94.46'	N43°01'27"W
L33	56.46'	N29°31'21"W
L34	118.35'	N55°59'15"W
L35	21.40'	N54°27'23"E
L36	10.00'	N35°32'37"W
L37	20.99'	S54°27'23"W
L38	53.69'	N24°30'06"W

LINE TABLE FOR AREA #13

LINE	LENGTH	BEARING
L1	38.01'	N57°50'34"W
L2	23.53'	N29°20'54"W
L3	33.49'	N75°58'50"E
L4	47.40'	N20°23'28"E
L5	26.57'	S55°24'42"E
L6	33.66'	S68°44'41"E
L7	15.43'	S54°24'13"E
L8	17.79'	S79°01'01"E
L9	38.41'	S62°30'00"W
L10	38.18'	S71°52'22"W
L11	30.12'	S37°10'25"W

LINE TABLE FOR AREA #17

LINE	LENGTH	BEARING
L1	74.14'	N04°27'27"E
L2	108.39'	N30°33'57"E
L3	26.29'	S32°04'41"E
L4	13.79'	S15°06'50"E
L5	47.83'	S29°15'19"E
L6	33.15'	S09°26'29"E
L7	28.27'	S06°44'06"E
L8	12.42'	S01°41'13"E
L9	32.84'	S08°34'37"E
L10	24.00'	S19°44'19"E
L11	11.39'	S41°09'32"E
L12	12.42'	S13°27'37"E
L13	31.32'	S48°31'54"E
L14	26.94'	S32°01'42"E
L15	35.56'	N70°26'19"E
L16	39.66'	N18°06'44"W
L17	31.39'	N26°57'45"W
L18	44.24'	N00°31'38"W
L19	16.95'	N09°08'42"E
L20	25.44'	N02°13'29"E
L21	15.74'	N11°35'31"W
L22	24.34'	N02°59'23"W
L23	48.13'	N24°09'33"W
L24	20.00'	N08°47'31"W
L25	16.74'	N10°07'30"E
L26	12.50'	N23°36'13"W
L27	39.88'	N38°41'03"W
L28	46.93'	N63°11'42"E
L29	42.72'	S32°01'19"E
L30	35.74'	S54°41'26"E
L31	49.12'	S73°24'53"E
L32	129.73'	S00°00'00"E
L33	88.91'	S13°02'03"E
L34	55.00'	S18°27'50"E
L35	195.67'	S61°42'58"W
L36	110.00'	N29°01'44"W
L37	121.56'	N41°35'39"W

GRAPHIC SCALE  
 100' 0' 100' 200'  
 SCALE: 1" = 100'

Large/Small Plat(s) Recorded herewith as # 050020150

S:\Jobs\888111-A Golf\dwg\Plats\8881-11p07.dwg, 9/8/2004 12:05:47 PM, heb

**CONSULTING ENGINEERS**  
 WILLIAMSBURG • RICHMOND

5248 Olde Towne Road, Suite 1  
 Williamsburg, Virginia 23188  
 (757) 253-0040  
 Fax (757) 220-8994

**PLAT OF NATURAL OPEN SPACE & CONSERVATION EASEMENTS COLONIAL HERITAGE**  
 PORTIONS OF GOLF COURSE HOLES 1-18 FOR CONVEYANCE TO JAMES CITY COUNTY

STONEHOUSE DISTRICT      JAMES CITY COUNTY      VIRGINIA

City of Williamsburg & County of James City  
 Circuit Court: This PLAT was recorded on 8-26-2005  
 at 12:45 PM, PB PG  
 DOCUMENT # 050020150  
 BETSY B. WOOLRIDGE, CLERK  
*Betsy Woolridge* Clerk

1	9/7/04	REVISED PER COUNTY COMMENTS	HWP
No.	DATE	REVISION / COMMENT / NOTE	BY

Designed AES	Drawn AES
Scale 1"=100'	Date 5/14/04
Project No. 8881-11H	
Drawing No. 7 OF 7	